

# Downtown Streetlights

Joe Capowski  
to Chapel Hill Town Council  
March 27, 2006

# I ask

Please expand our streetlight thinking  
beyond purely utilitarian

Install streetlights that will become  
a town symbol of pride

# Lewisburg is an example

College town (Bucknell) in northern  
Pennsylvania

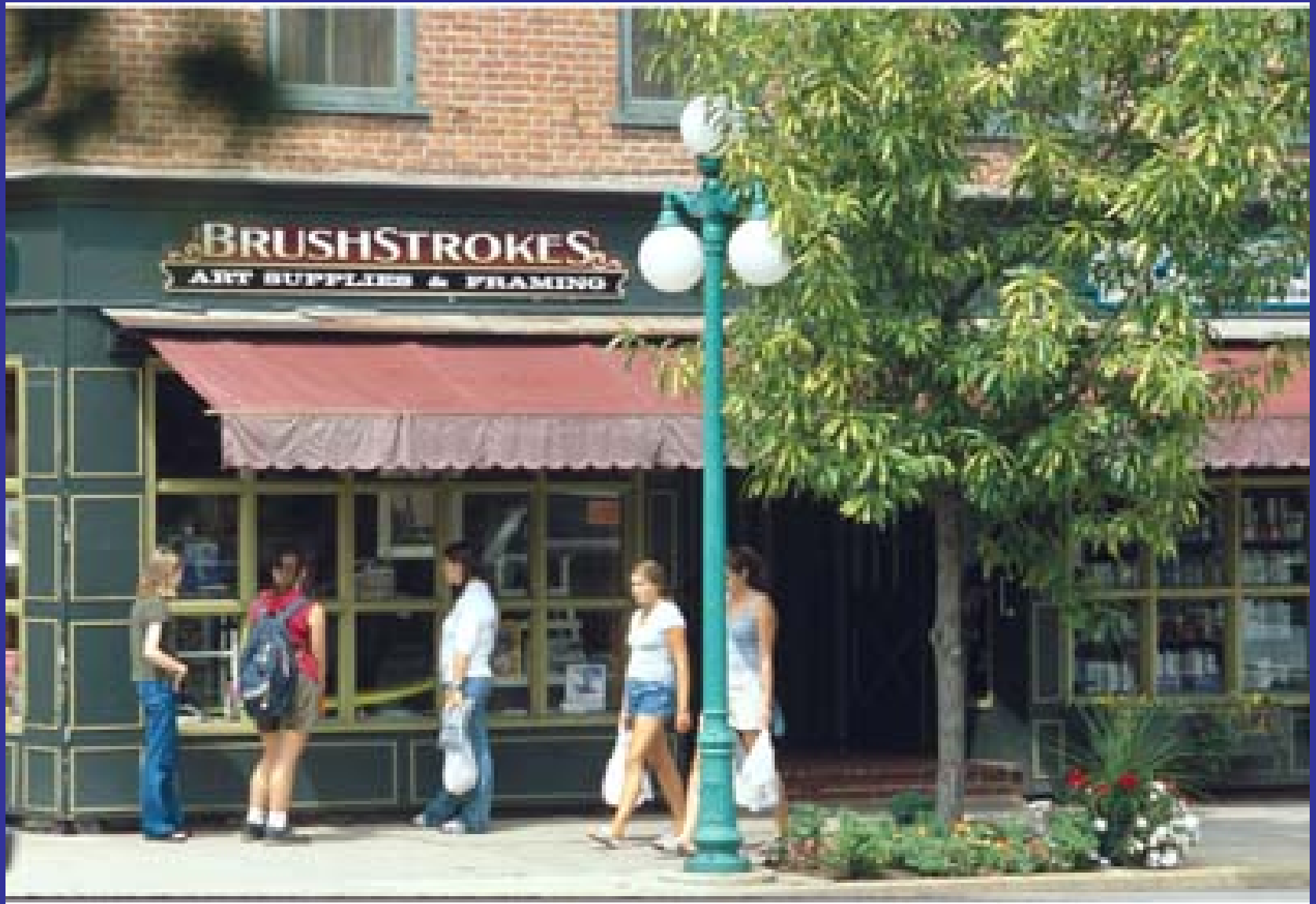
Regional economy weaker than ours

Beautiful downtown

Streetlights are a major part of the beauty

Market Street





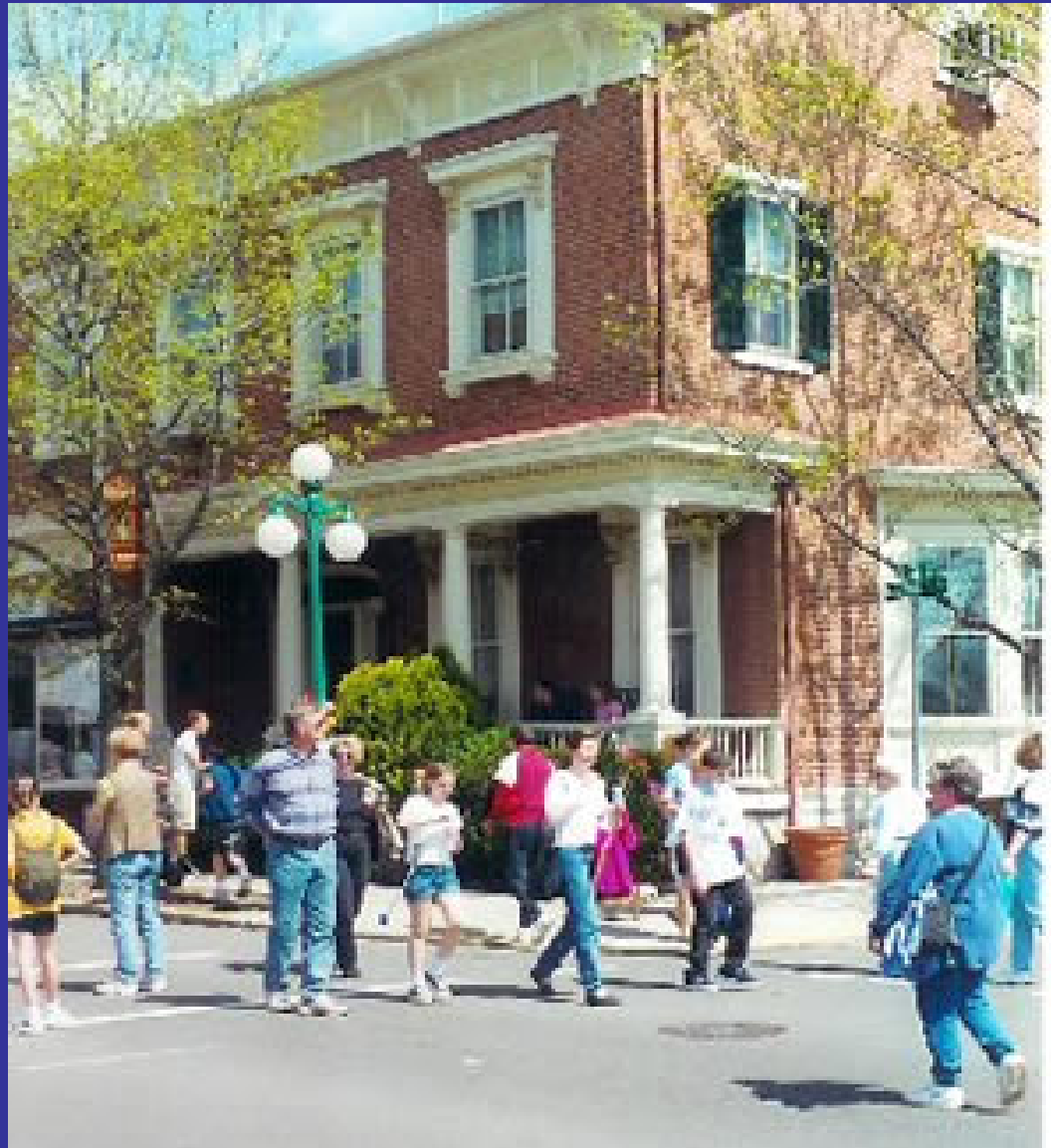
















*Lewisburg, Pennsylvania*

*In the Central Susquehanna Valley*



Downtown neighborhoods



*L BRYNWOOD  
rentals*

*Your Rental Solution*







# Town and business logos

LEWISBURG



Find 3 of these



Lewisburg Hotel

Welcome







# Individual lightposts







*Three Globe Streetlight*



Photo by Creative Images Plus

# Watercolors of Lewisburg by Brad Shoemaker











# Quotations

I am convinced, absolutely, that **the Lewisburg street lights are the single most important economic development tool the community has.** Give a nod to your council...aesthetics alone do nothing for a community, but neither does economic development only. People are drawn to attractive, beautiful places.

Linda Sterling, Director, Lewisburg Downtown Partnership

They are definite source of pride. I am a downtown resident and **I love them**. Definitely recommend that your town staff look at Lewisburg. The lights figure prominently in our advertising.

Kathy Graham, Director of Gift Planning, Bucknell

(Have you ever heard anyone in Chapel Hill say that he loved our streetlights?)

The lights are indeed historic and aesthetically very appealing. The three-globe lamp post has become a recognized trademark of Lewisburg and definitely adds to the charm of Lewisburg.

Eric Winslow, CEO, Citizen's Electric

# Chapel Hill's Downtown Design Guidelines

Bi-level lighting; street lights higher, sidewalks lights lower  
and more frequent

Nothing about using lighting for anything greater than  
the purely utilitarian function of providing light

We can do so much better!

# Credits and addresses

Linda Sterling, Director, Lewisburg Downtown Partnership, [lsterling@lewisburgpa.com](mailto:lsterling@lewisburgpa.com)

Eric Winslow, CEO, Citizen's Electric, [winslowe@citizenselectric.com](mailto:winslowe@citizenselectric.com)

Kathy Graham, Director of Gift Planning, Bucknell, [kgraham@bucknell.edu](mailto:kgraham@bucknell.edu)

Kathryn Kopchick, Director of Communications, Bucknell, [kkopchick@bucknell.edu](mailto:kkopchick@bucknell.edu)

Bradley Shoemaker Gallery, [bradleyshoemaker.com](http://bradleyshoemaker.com)

Website of Lewisburg Downtown Partnership: [lewisburgpa.com](http://lewisburgpa.com)