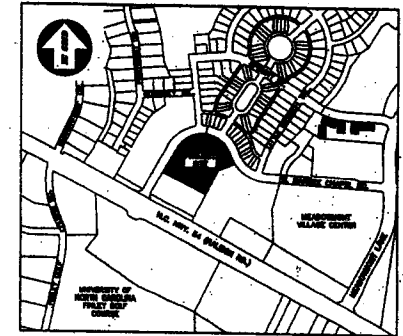


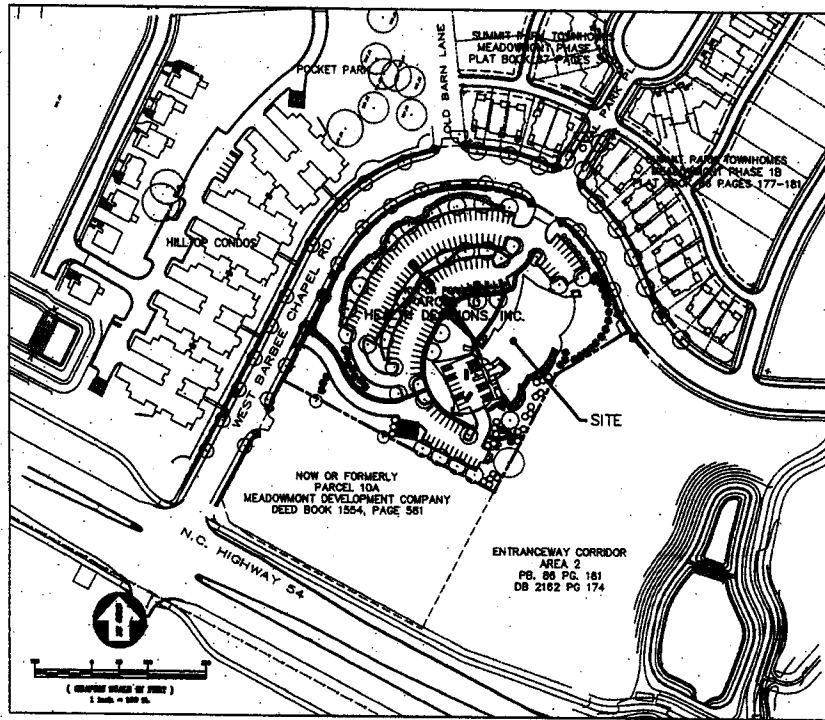
# CASTALIA AT MEADOWMONT

## CHAPEL HILL, NC

DEVELOPER: CASTALIA GROUP LLC



VICINITY MAP



### DRAWING LEGEND

SYMBOL/ABBREVIATION		DESCRIPTION
EXISTING	PROPOSED	
○	○	IRON PIPE/PROPERTY CORNER
○	○	IRON PIPE SET
○	○	POURER POLE
○	○	UNIT POLE
○	○	CATCH BASIN/VAULT
○	○	TRIO INLET
○	○	STURDY BENCH MANHOLE
○	○	ELECTRICAL MANHOLE
○	○	STORM DRAINAGE MANHOLE (CAUTION BOX)
○	○	FIRE HYDRANT
○	○	WATER VALVE
○	○	WATER METER
○	○	ELECTRICAL TRANSFORMER
○	○	SEWER/STORM OVERFLOW VALVE
○	○	STORM DRAINAGE PIPE
○	○	SEWER LINE
○	○	ONE LINE
○	○	STURDY BENCH LINE
○	○	STURDY BENCH POLE MAN
○	○	OVERHEAD BUNDLING LINE
○	○	BUNDLED BUNDLING LINE
○	○	CABLE TELEVISION
○	○	FIBER OPTIC CABLE
○	○	RAILROAD
○	○	RAILROAD AND OTHER STRUCTURE
○	○	WATER CONTOUR
○	○	MAJOR CONTOUR
○	○	SPOT ELEVATION

### DRAWING LIST

NO.	DRAWING TITLE
0-1	AREA MAP
0-2	SITE ANALYSIS PLAN
0-3	SITE PLAN
0-4	GRADING, DRAINAGE & LANDSCAPE PROTECTION PLAN
0-5	UTILITY PLAN
L-1	LANDSCAPE PLAN
L-2	PEDESTRIAN AND BIICYCLE NETWORK PLAN
A-1	SITE SECTIONS
	PORTION OF MEADOWMONT MASTER LAND USE PLAN

171

ATTACHMENT 31

**BALLENTINE ASSOCIATES PA**  
 ARCHITECTS & ENGINEERS  
 1000 W. GOLF COURSE RD., SUITE 100  
 CHAPEL HILL, NC 27514  
 (919) 967-1111

**CASTALIA AT MEADOWMONT**  
 CHAPEL HILL, NC

**SPECIAL USE PERMIT DRAWINGS**

**COVER**

REVIEW DRAWING  
 NOT FOR CONSTRUCTION



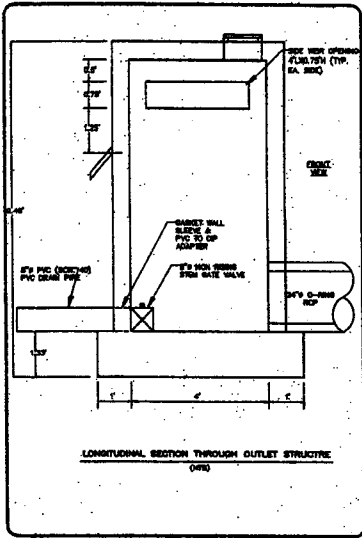






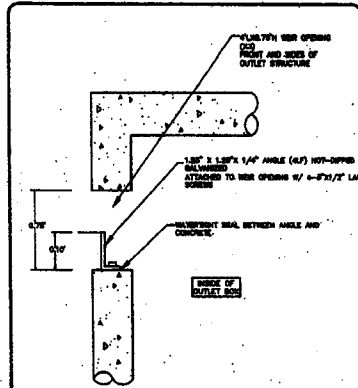


**POND 3**



LONGITUDINAL SECTION THROUGH OUTLET STRUCTURE  
(010)

CASTALIA  
PAPER 18 AT MEADOWMONT

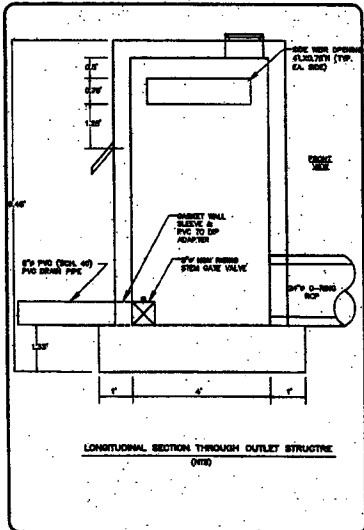


TYPICAL WEIR OPENING MODIFICATION  
(010)

NOTES: 1. MODIFICATION SHOWN ABOVE IS TYPICAL FOR EACH WEIR OPENING ON THE OUTLET STRUCTURE.  
2. DESIGN ELEVATION OF WEIR BEFORE MODIFICATION IS 81.241.74.  
3. 3 WEIR TOTAL WILL BE REQUIRED.

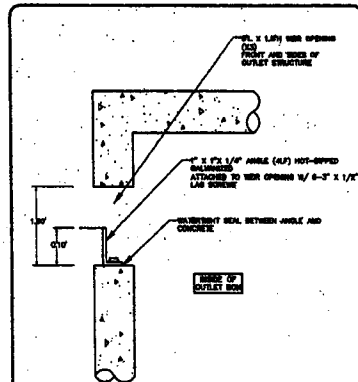
CASTALIA  
PAPER 18 AT MEADOWMONT

**POND 4**



LONGITUDINAL SECTION THROUGH OUTLET STRUCTURE  
(010)

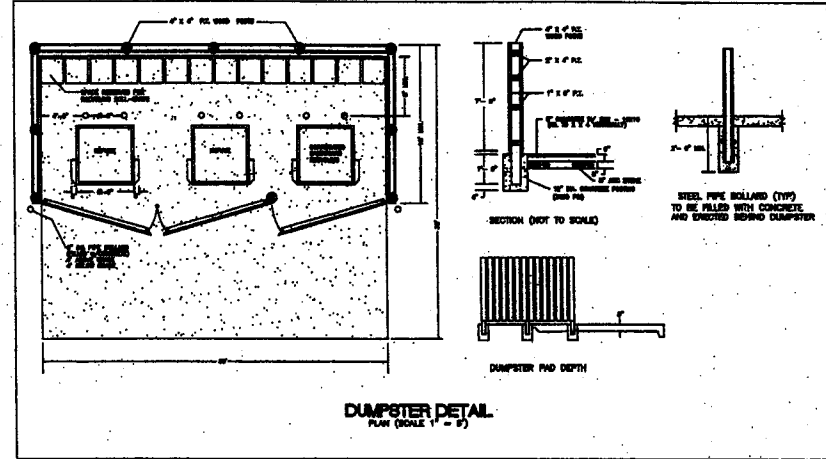
CASTALIA  
PAPER 18 AT MEADOWMONT



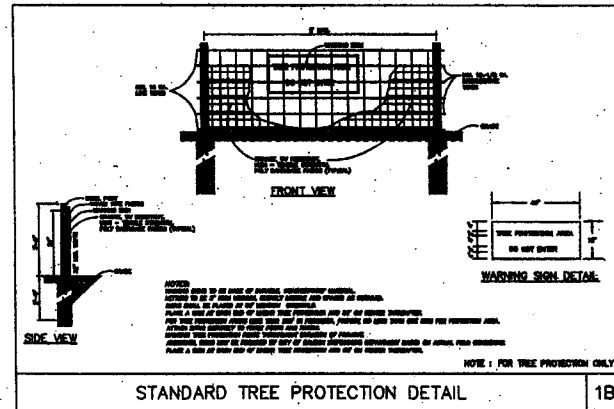
TYPICAL WEIR OPENING MODIFICATION  
(010)

NOTES: 1. MODIFICATION SHOWN ABOVE IS TYPICAL FOR EACH WEIR OPENING ON THE OUTLET STRUCTURE.  
2. DESIGN ELEVATION OF WEIR BEFORE MODIFICATION IS 81.241.74.  
3. 3 WEIR TOTAL WILL BE REQUIRED.

CASTALIA  
PAPER 18 AT MEADOWMONT

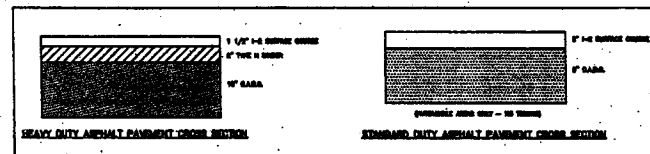


DUMPSTER DETAIL  
PLAN (SCALE 1/4\"/>



STANDARD TREE PROTECTION DETAIL

18



TYPICAL PAVEMENT DETAIL

**DETAILS OF MEADOWMONT POND OUTLET STRUCTURE MODIFICATIONS**

**DETAILS**

REVIEW DRAWING  
NOT FOR CONSTRUCTION

**BALLENTINE ASSOCIATES PA**  
INCORPORATED  
1000 W. 10TH ST.  
DENVER, CO 80202  
TEL: 303.733.1111  
FAX: 303.733.1112

**CASTALIA AT MEADOWMONT**  
CHAMPLAIN, N.Y.

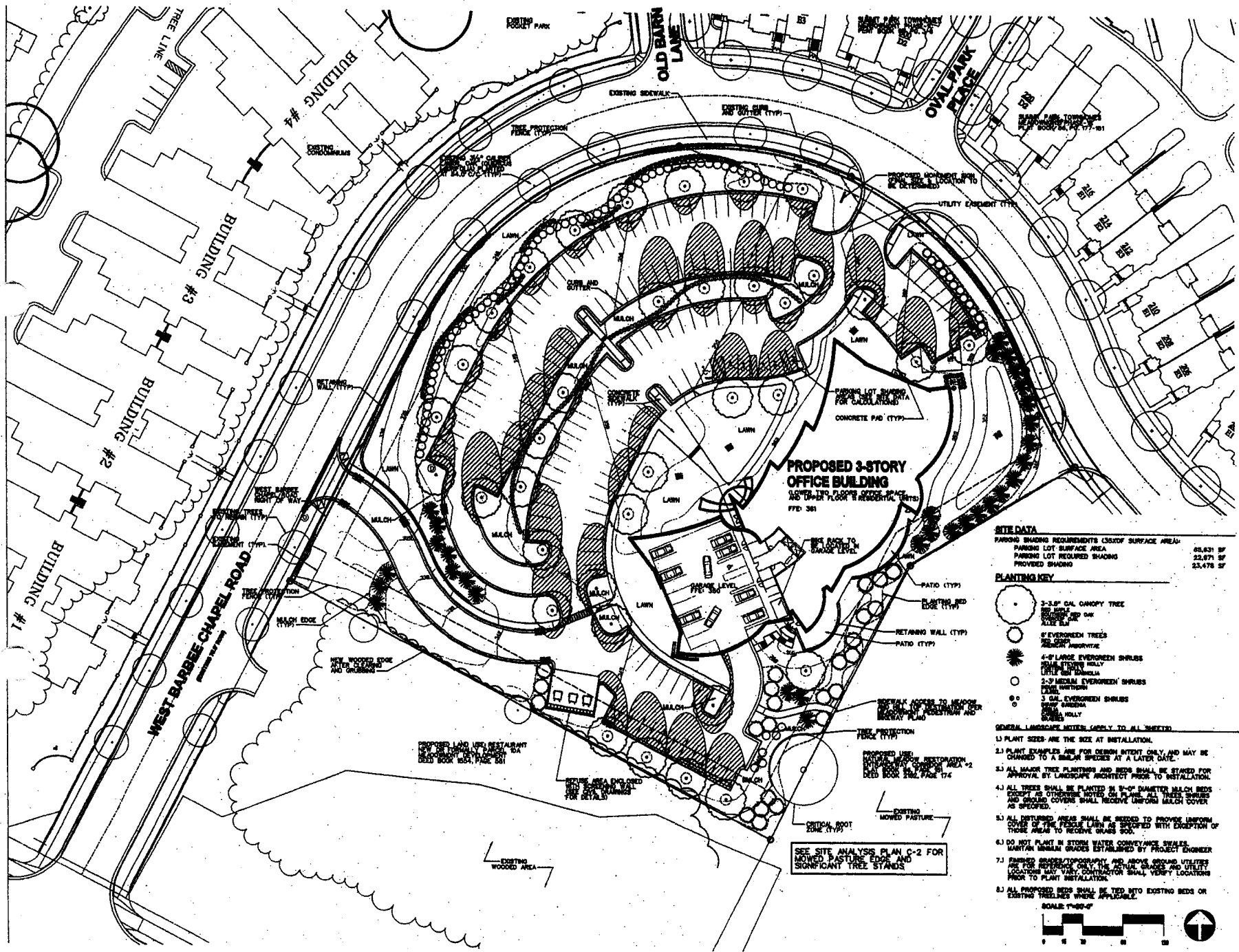
**SPECIAL USE PERMIT DRAWINGS**

DATE: \_\_\_\_\_  
SCALE: \_\_\_\_\_  
DRAWN BY: \_\_\_\_\_  
CHECKED BY: \_\_\_\_\_  
APPROVED BY: \_\_\_\_\_

NO. 1007248  
DATE: 1/20/00  
SCALE: AS SHOWN  
DRAWN BY: JLD  
CHECKED BY: JLD  
APPROVED BY: JLD

18

**C-6**



LEDDER + HAYWARD, PA  
LANDSCAPE ARCHITECTS



LANDSCAPE ARCHITECTS  
LEDDER + HAYWARD, PA  
148 OLD BARR LANE  
CHAPEL HILL, NC 27514  
TEL: 919.966.1488  
WWW.LHPPA.COM

148

**GASTALIA AT MEADOWMONT**

CHAPEL HILL, NC

**LANDSCAPE PLAN NOT FOR CONSTRUCTION**

**SPECIAL USE PERMIT**

NO.	REVISION	DATE
1	ISSUE	11/18/2011
2		
3		
4		
5		
6		
7		
8		
9		
10		
11		
12		
13		
14		
15		
16		
17		
18		
19		
20		
21		
22		
23		
24		
25		
26		
27		
28		
29		
30		
31		
32		
33		
34		
35		
36		
37		
38		
39		
40		
41		
42		
43		
44		
45		
46		
47		
48		
49		
50		

**SITE DATA**

PARKING SHADING REQUIREMENTS (30% OF SURFACE AREA)	65,631 SF
PARKING LOT SURFACE AREA	22,871 SF
PARKING LOT REQUIRED SHADING	25,478 SF
PROVIDED SHADING	

- PLANTING KEY**
- 3-5' CAL GANYO TREE
  - 6' EVERGREEN TREES
  - 4'-6' LARGE EVERGREEN SHRUBS
  - 2'-3' MEDIUM EVERGREEN SHRUBS
  - 3' CAL EVERGREEN SHRUBS
  - LITTLE LEAF SHRUBS

- GENERAL LANDSCAPE NOTES, APPLY TO ALL SHEETS:**
- 1) PLANT SIZES ARE THE SIZE AT INSTALLATION.
  - 2) PLANT SIZES ARE FOR DESIGN INTENT ONLY AND MAY BE CHANGED TO A LARGER SPECIES AT A LATER DATE.
  - 3) ALL MAJOR TREE PLANTINGS AND BEDS SHALL BE STAKED FOR APPROVAL BY LANDSCAPE ARCHITECT PRIOR TO INSTALLATION.
  - 4) ALL TREES SHALL BE PLANTED IN 18" DIAMETER MULCH BEDS AND GRASS COVERS SHALL RECEIVE UNIFORM MULCH COVER AS SPECIFIED.
  - 5) ALL DISTURBED AREAS SHALL BE SEED TO PROVIDE UNIFORM COVER OF THE PASTURE EDGES AS SPECIFIED WITH EXCEPTION OF THOSE AREAS TO RECEIVE GRASS SOIL.
  - 6) DO NOT PLANT IN STORM WATER CONVEYANCE SWALES UNLESS PERMITTED OTHERWISE ESTABLISHED BY PROJECT ENGINEER.
  - 7) FURNISH SHADING REQUIREMENTS AS SPECIFIED WITH EXCEPTION OF THOSE AREAS TO RECEIVE GRASS SOIL AND UTILITY LOCATIONS PRIOR TO PLANT INSTALLATION.
  - 8) ALL PROPOSED BEDS SHALL BE TIED INTO EXISTING BEDS OR EXISTING TREELINES WHERE APPLICABLE.







**CASTALIA**  
AT  
MEADOWMONT  
for  
Health Decisions Inc.

