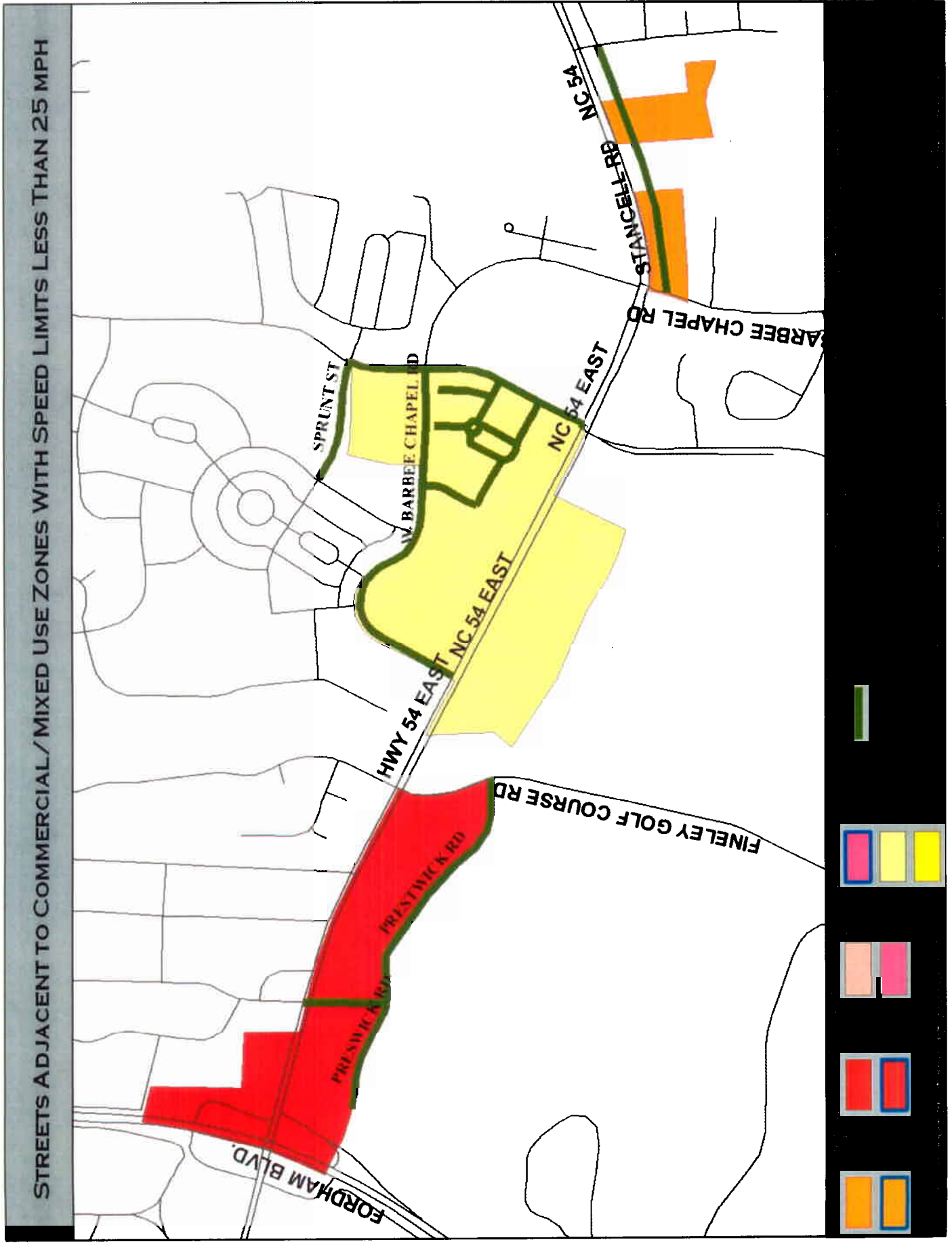
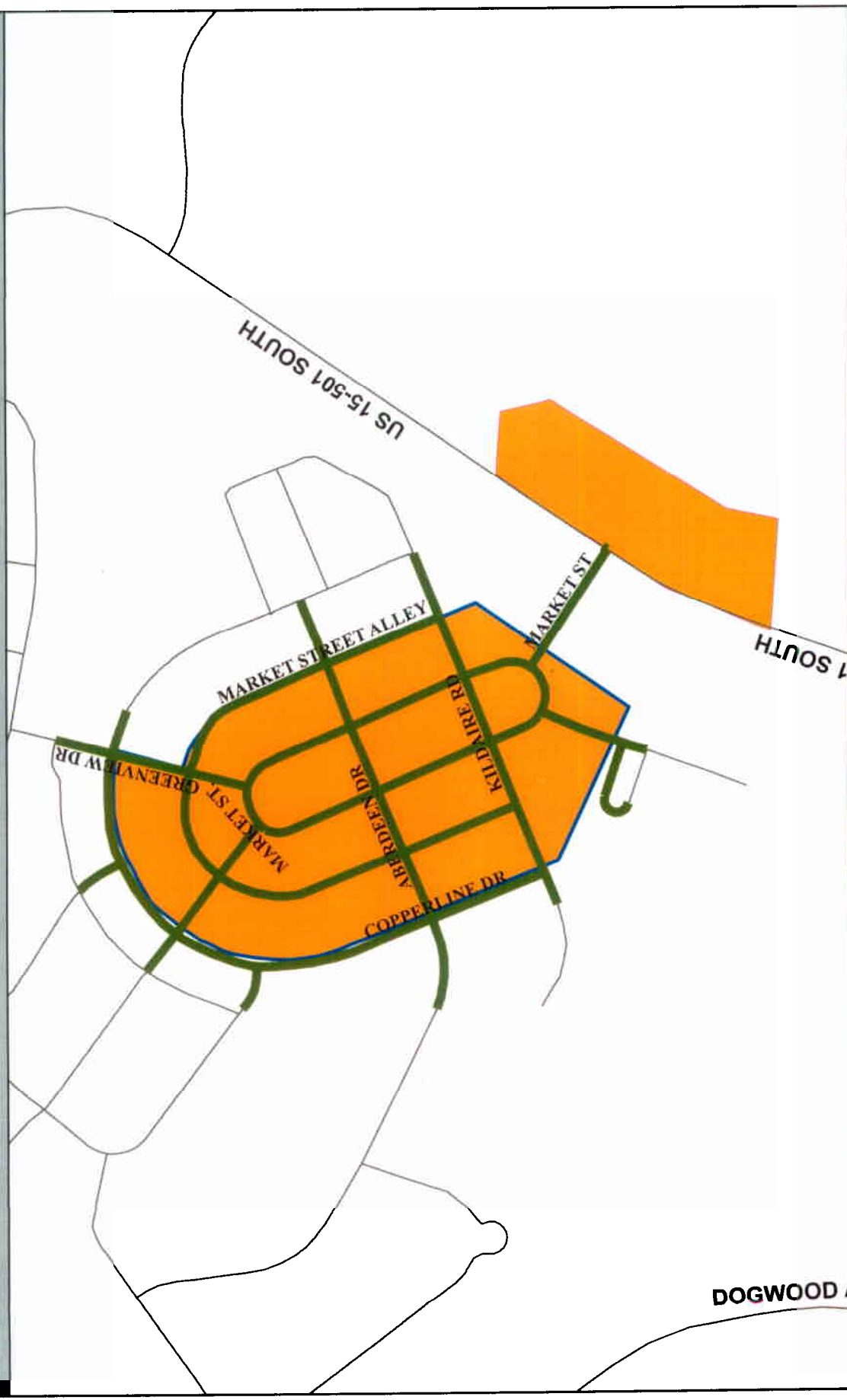


7



STREETS ADJACENT TO COMMERCIAL/MIXED USE ZONES WITH SPEED LIMITS LESS THAN 25 MPH



Legend:

- NC (Orange box)
- NC-C (Orange box with blue border)
- CC (Red box)
- CC-C (Red box with blue border)
- TC-1 (Pink box)
- TC-2 (Pink box)
- TC-2-C (Pink box with blue border)
- MU-R-1 (Yellow box)
- MU-OI-1 (Yellow box)

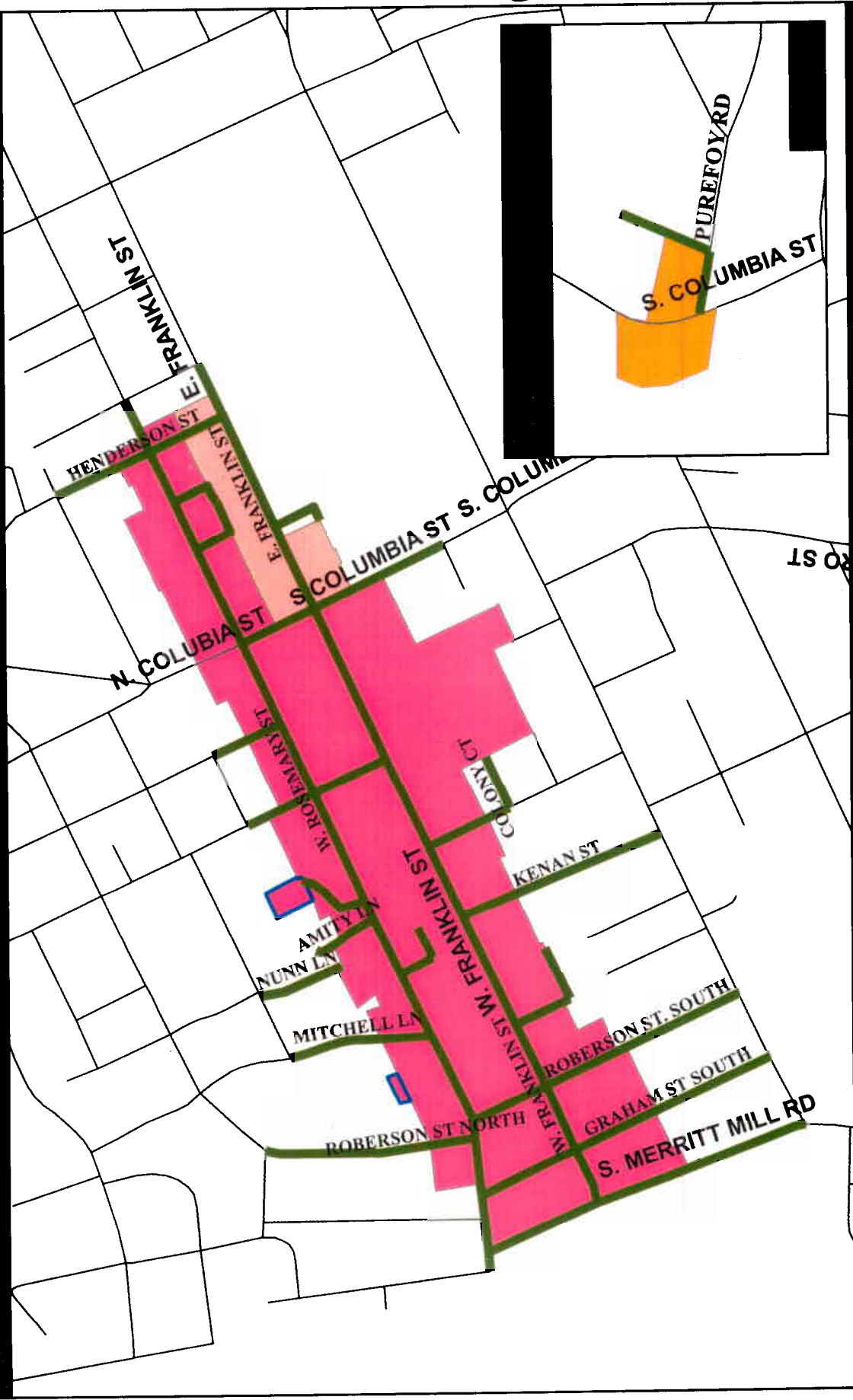
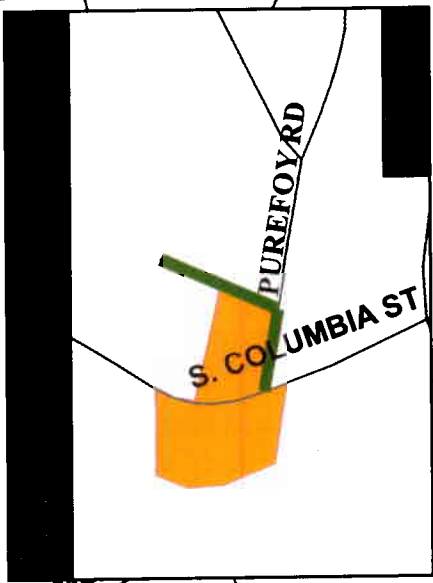
Street Types:

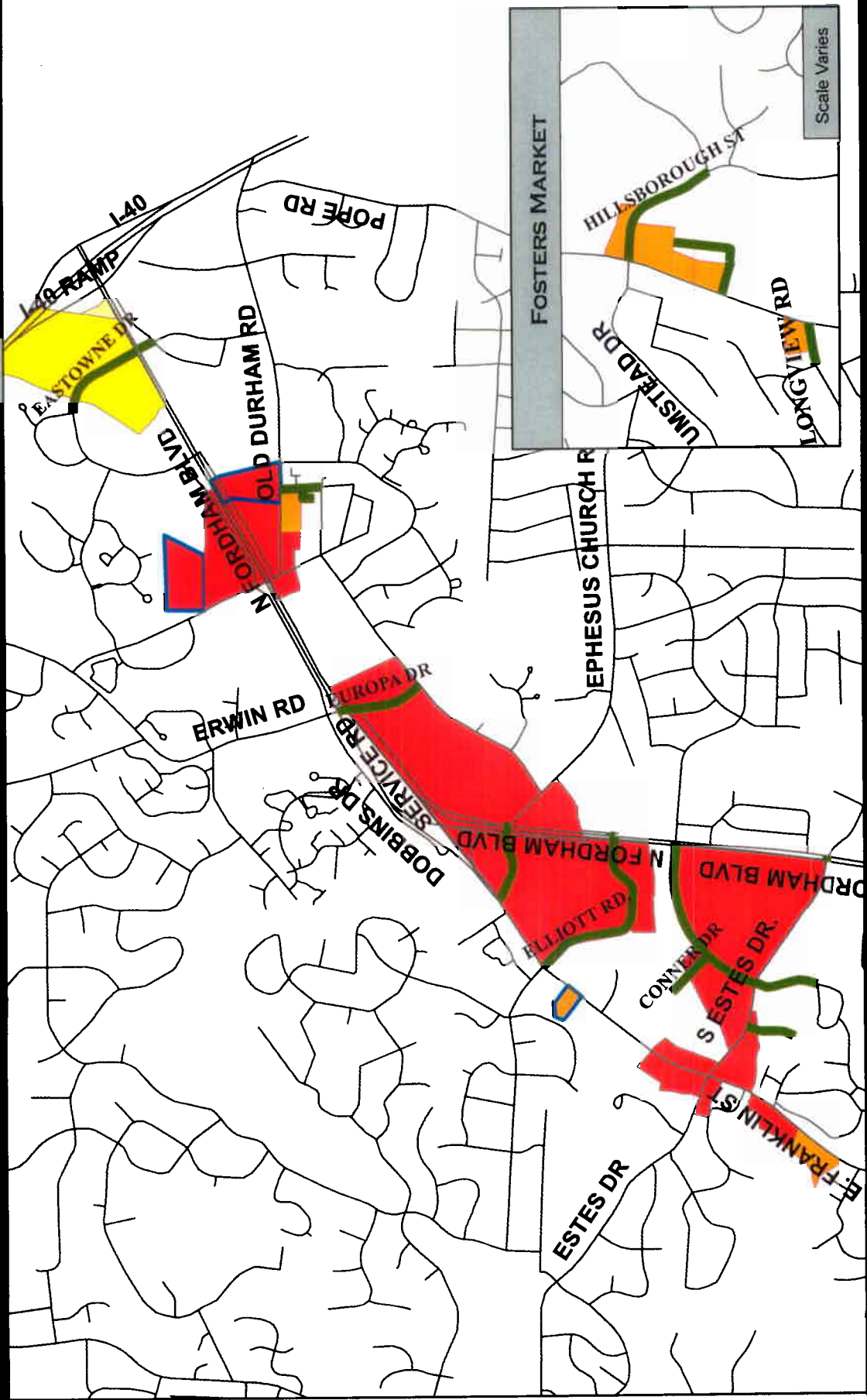
- 25 mph Streets Adjacent to Commercial/Mixed Use Zones (Green line)
- Chapel Hill Streets (Grey line)

Scale: 0 125 250 500 750 1,000 Feet

Compass: N, S, E, W

DOGWOOD A

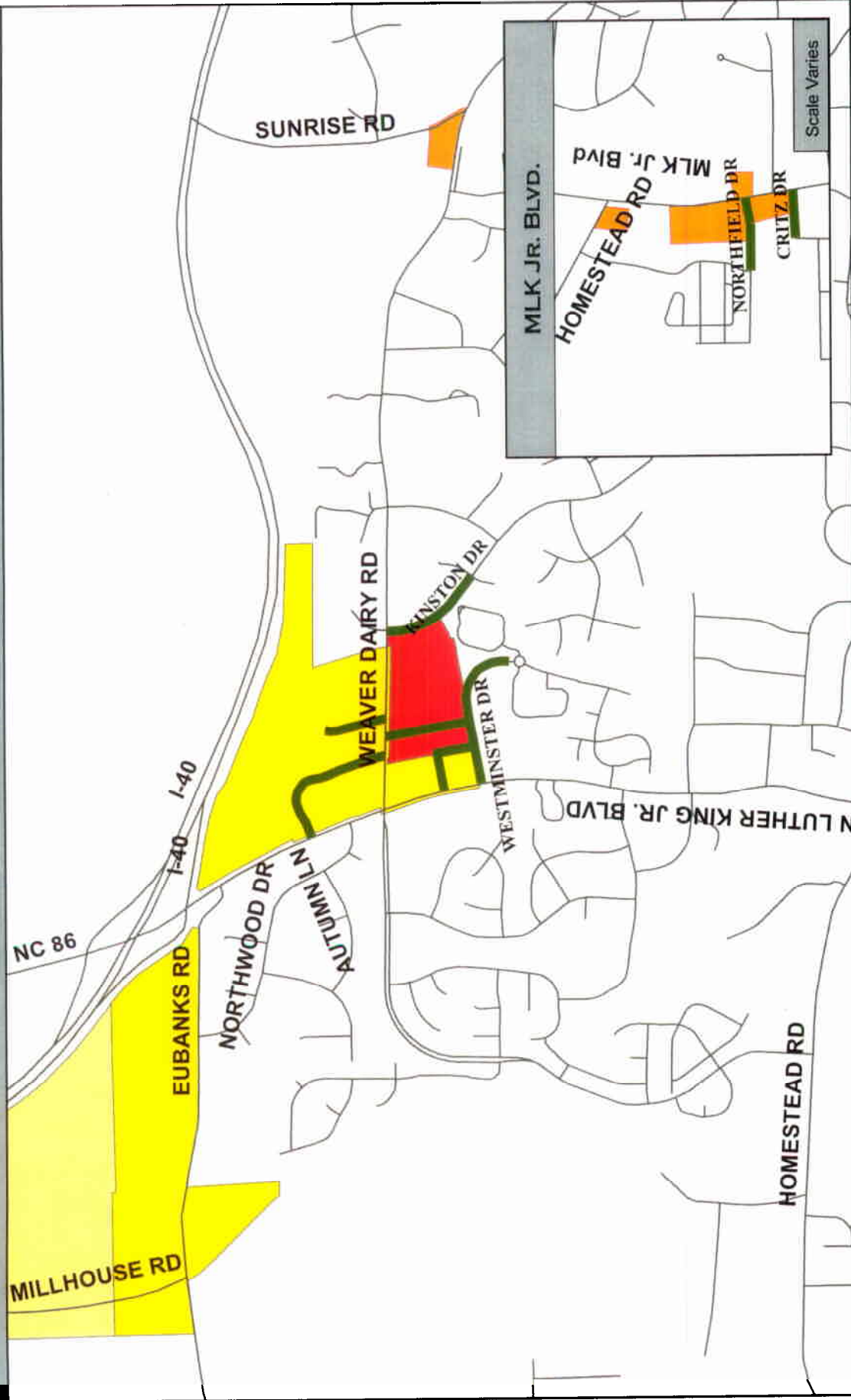




Scale Varies



STREETS ADJACENT TO COMMERCIAL/MIXED USE ZONES WITH SPEED LIMITS LESS THAN 25 MPH



Legend:

- NC
- CC
- TC-1
- TC-2
- MU-R-1
- MU-OI-1
- 25 mph Streets Adjacent to Commercial/Mixed Use Zones
- Chapel Hill Streets

Scale: 0 500 1,000 2,000 3,000 4,000 Feet

North Arrow

11