



18

ATTACHMENT 6



**THE JOHN R. McADAMS  
COMPANY, INC.**

ENGINEERS PLANNERS SURVEYORS  
POST OFFICE BOX 1400  
RESEARCH TRIANGLE PARK, NORTH CAROLINA 27709  
(919) 361-5000 (919) 361-2209

## **Chapel Hill Country Club Renovation**

Chapel Hill, NC

### **Site Photo 1**

The Clubhouse's frontage  
on Lancaster Drive.



(b1)



**THE JOHN R. McADAMS  
COMPANY, INC.**

ENGINEERS/PLANNERS/SURVEYORS  
POST OFFICE BOX 14005  
RESEARCH TRIANGLE PARK, NORTH CAROLINA 27709  
(919) 361-5000 (919) 361-2269

## **Chapel Hill Country Club Renovation**

Chapel Hill, NC

### **Site Photo 2**

Facing west past the  
Clubhouse's frontage on  
Lancaster Drive.



**THE JOHN R. McADAMS  
COMPANY, INC.**

ENGINEERS/PLANNERS/SURVEYORS  
POST OFFICE BOX 14005  
RESEARCH TRIANGLE PARK, NORTH CAROLINA 27709  
(919) 361-5000 (919) 361-2269

## **Chapel Hill Country Club Renovation**

Chapel Hill, NC

### **Site Photo 3**

Facing east from the  
Clubhouse's frontage on  
Lancaster Drive.



(12)



**THE JOHN R. McADAMS  
COMPANY, INC.**

ENGINEERS/PLANNERS/SURVEYORS  
POST OFFICE BOX 14005  
RESEARCH TRIANGLE PARK, NORTH CAROLINA 27709  
(919) 361-5000 (919) 361-2269

## **Chapel Hill Country Club Renovation**

Chapel Hill, NC

### **Site Photo 4**

Neighboring residences  
across Lancaster Drive.



22



**THE JOHN R. McADAMS  
COMPANY, INC.**

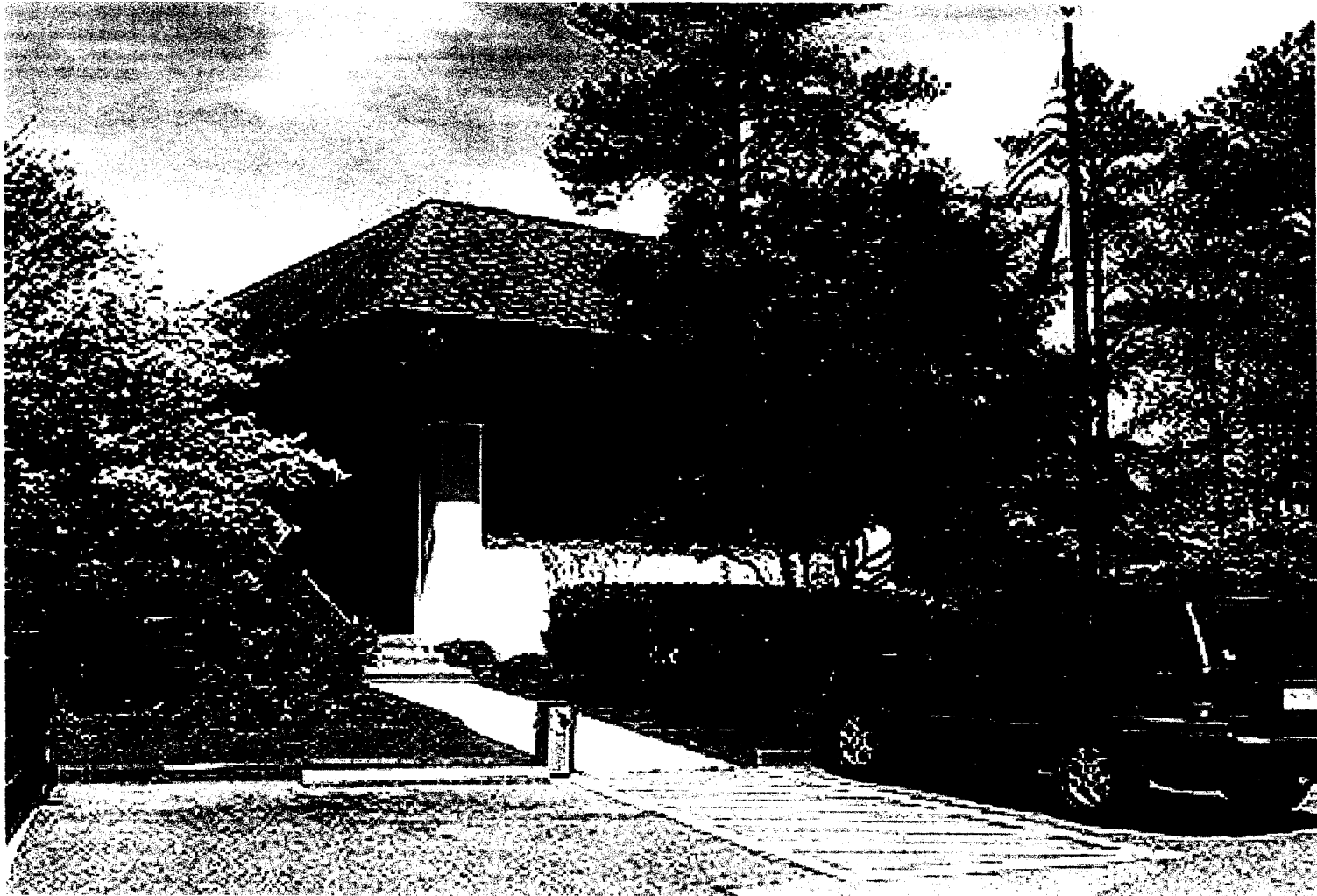
ENGINEERS/PLANNERS/SURVEYORS  
POST OFFICE BOX 14005  
RESEARCH TRIANGLE PARK, NORTH CAROLINA 27709  
(919) 361-5000 (919) 361-2269

## **Chapel Hill Country Club Renovation**

Chapel Hill, NC

### **Site Photo 5**

Adjacent residences west  
of the Clubhouse.



23



**THE JOHN R. McADAMS  
COMPANY, INC.**

ENGINEERS/PLANNERS/SURVEYORS  
POST OFFICE BOX 14005  
RESEARCH TRIANGLE PARK, NORTH CAROLINA 27709  
(919) 361-5000 (919) 361-2269

## **Chapel Hill Country Club Renovation**

Chapel Hill, NC

### **Site Photo 6**

Existing porte cochere, to  
be replaced.



27



**THE JOHN R. McADAMS  
COMPANY, INC.**

ENGINEERS/PLANNERS/SURVEYORS  
POST OFFICE BOX 14005  
RESEARCH TRIANGLE PARK, NORTH CAROLINA 27709  
(919) 361-5000 (919) 361-2269

## **Chapel Hill Country Club Renovation**

Chapel Hill, NC

### **Site Photo 7**

View through existing porte  
cochere, east elevation.



28



**THE JOHN R. McADAMS  
COMPANY, INC.**

ENGINEERS/PLANNERS/SURVEYORS  
POST OFFICE BOX 14005  
RESEARCH TRIANGLE PARK, NORTH CAROLINA 27709  
(919) 361-5000 (919) 361-2269

## **Chapel Hill Country Club Renovation**

Chapel Hill, NC

### **Site Photo 8**

View through existing porte  
cochere, west elevation.





29



**THE JOHN R. McADAMS  
COMPANY, INC.**

ENGINEERS/PLANNERS/SURVEYORS  
POST OFFICE BOX 14005  
RESEARCH TRIANGLE PARK, NORTH CAROLINA 27709  
(919) 361-5000 (919) 361-2269

## **Chapel Hill Country Club Renovation**

Chapel Hill, NC

### **Site Photo 9**

East flank of Clubhouse, pro-  
posed for dining room and  
changing rooms expansion.



127



**THE JOHN R. McADAMS  
COMPANY, INC.**

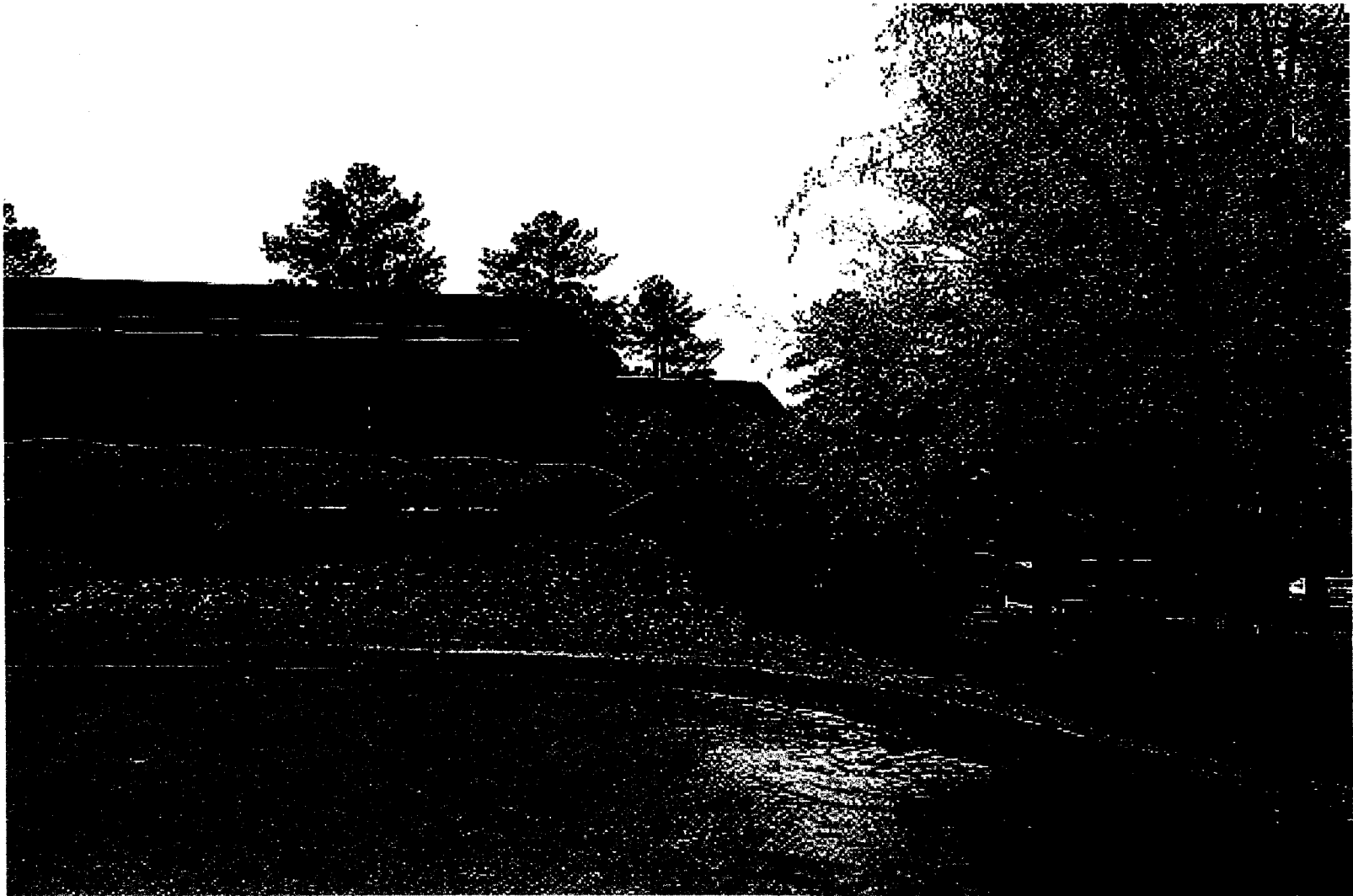
ENGINEERS/PLANNERS/SURVEYORS  
POST OFFICE BOX 14005  
RESEARCH TRIANGLE PARK, NORTH CAROLINA 27709  
(919) 361-5000 (919) 361-2269

## **Chapel Hill Country Club Renovation**

Chapel Hill, NC

### **Site Photo 10**

North elevation of Club-  
house. Pavilion proposed  
at NW corner (right).



**THE JOHN R. McADAMS  
COMPANY, INC.**

ENGINEERS/PLANNERS/SURVEYORS  
POST OFFICE BOX 14005  
RESEARCH TRIANGLE PARK, NORTH CAROLINA 27709  
(919) 361-5000 (919) 361-2269

## **Chapel Hill Country Club Renovation**

Chapel Hill, NC

### **Site Photo 11**

Detail of NW corner - proposed  
location of open-air pavilion overlook-  
ing first tee.



12



**THE JOHN R. McADAMS  
COMPANY, INC.**

ENGINEERS/PLANNERS/SURVEYORS  
POST OFFICE BOX 14005  
RESEARCH TRIANGLE PARK, NORTH CAROLINA 27709  
(919) 361-5000 (919) 361-2269

## **Chapel Hill Country Club Renovation**

Chapel Hill, NC

### **Site Photo 12**

Detail of NW corner of Club-  
house, from western elevation.



**THE JOHN R. McADAMS  
COMPANY, INC.**

ENGINEERS/PLANNERS/SURVEYORS  
POST OFFICE BOX 14005  
RESEARCH TRIANGLE PARK, NORTH CAROLINA 27709  
(919) 361-5000 (919) 361-2269

## **Chapel Hill Country Club Renovation**

Chapel Hill, NC

### **Site Photo 13**

View east past Bathhouse's  
frontage on Lancaster Drive  
exhibiting landscaped buffer.



57



**THE JOHN R. McADAMS  
COMPANY, INC.**

ENGINEERS/PLANNERS/SURVEYORS  
POST OFFICE BOX 14005  
RESEARCH TRIANGLE PARK, NORTH CAROLINA 27709  
(919) 361-5000 (919) 361-2269

## **Chapel Hill Country Club Renovation**

Chapel Hill, NC

### **Site Photo 14**

Corner of Lancaster Drive  
and New Castle Drive,  
east of the Bathhouse.



15



**THE JOHN R. McADAMS  
COMPANY, INC.**

ENGINEERS/PLANNERS/SURVEYORS  
POST OFFICE BOX 14005  
RESEARCH TRIANGLE PARK, NORTH CAROLINA 27709  
(919) 361-5000 (919) 361-2269

## **Chapel Hill Country Club Renovation**

Chapel Hill, NC

### **Site Photo 15**

View south on New Castle  
Drive past Bathhouse (on  
right).



53



**THE JOHN R. McADAMS  
COMPANY, INC.**

ENGINEERS/PLANNERS/SURVEYORS  
POST OFFICE BOX 14005  
RESEARCH TRIANGLE PARK, NORTH CAROLINA 27709  
(919) 361-5000 (919) 361-2269

## **Chapel Hill Country Club Renovation**

Chapel Hill, NC

### **Site Photo 16**

View of eastern facade of  
Bathhouse from access off  
New Castle Drive.





37



**THE JOHN R. McADAMS  
COMPANY, INC.**

ENGINEERS/PLANNERS/SURVEYORS  
POST OFFICE BOX 14005  
RESEARCH TRIANGLE PARK, NORTH CAROLINA 27709  
(919) 361-5000 (919) 361-2269

## **Chapel Hill Country Club Renovation**

Chapel Hill, NC

### **Site Photo 17**

West facade of Bathhouse;  
additions proposed to both  
ends of the building.



**THE JOHN R. McADAMS  
COMPANY, INC.**

ENGINEERS/PLANNERS/SURVEYORS  
POST OFFICE BOX 14005  
RESEARCH TRIANGLE PARK, NORTH CAROLINA 27709  
(919) 361-5000 (919) 361-2269

## **Chapel Hill Country Club Renovation**

Chapel Hill, NC

### **Site Photo 18**

North facade of Bath-  
house.