

Timberlyne

PEDESTRIAN/BICYCLE MOBILITY STUDY

Results

Februrary 26, 2007



**Timberlyne Activity Survey Results -
February 2007 Mail Survey Page 1 of 3**

Go! Chapel Hill

**Respondent
Total =**

107

| | YES | NO | No Answer |
|--|-----|-----|-----------|
| Do you Believe that physical activity is important? | 75% | 0% | 25% |
| Do you participate in 30 minutes of physical activity daily? | 54% | 20% | 26% |
| 4.a Do you use public transit regularly? | 23% | 71% | 6% |

| | At Least Once per Day | At Least Once per | At Least Once per Month | At Least Every 3 Months | At Least Once Per Year | Never | No Answer |
|--|-----------------------|-------------------|-------------------------|-------------------------|------------------------|-------|-----------|
| 1.a I walk/bike through the neighborhood... | 52% | 36% | 7% | 4% | 1% | 0% | 0% |
| 2.a I walk/bike to Timberlyne Shopping Center... | 15% | 49% | 22% | 10% | 2% | 0% | 2% |
| 3.a I walk/bike to Chapel Hill North... | 0% | 11% | 14% | 7% | 14% | 44% | 10% |

| | MORE | LESS | NO CHANGE | No Answer |
|--|------|------|-----------|-----------|
| 1.b If there were better pedestrian/bicycle facilities in the neighborhood, I would walk/bike... | 68% | 0% | 32% | 0% |
| 2.b If there were better pedestrian/bicycle facilities TO Timberlyne Shopping Center, I would walk/bike... | 64% | 0% | 36% | 0% |
| 3.b If there were better pedestrian/bicycle facilities TO Chapel Hill North, I would walk/bike... | 78% | 0% | 19% | 4% |

| | | | | |
|--|-----|----|-----|----|
| 2.c If there were better pedestrian/bicycle facilities WITHIN Timberlyne Shopping Center, I would walk/bike... | 49% | 1% | 47% | 3% |
| 3.c If there were better pedestrian/bicycle facilities WITHIN Chapel Hill North, I would walk/bike... | 53% | 0% | 39% | 4% |

| | Leisure | | Shopping | Excercise | Bus/Vanpool |
|--|---------|-----|----------|-----------|-------------|
| 2.d Why do you walk to Timberlyne Shopping Center? | 79% | 64% | 88% | 7% | 2% |
| 3.d Why do you walk to Chapel Hill North? | 29% | 8% | 46% | 3% | 0% |

**Timberlyne Activity Survey Results -
February 2007 Mail Survey Page 2 of 3**

| | | | | | | | | | |
|-----|---|----------------------|---|--------------------------------|--------------|-----------------|---------------------|-----------------------|------------------------|
| 4.b | What are the major barriers to using public transit in your neighborhood? | Distance to Bus Stop | Pedestrian Facilities Getting to Bus Stop | Lack of Facilities at Bus Stop | I have a Car | Schedule Issues | Route Access Issues | I think TTA is Unsafe | Travel Distance to Far |
| | | 14% | 15% | 16% | 3% | 17% | 5% | 1% | 2% |

| |
|---|
| I have a Time Constrained Schedule |
| 7% |

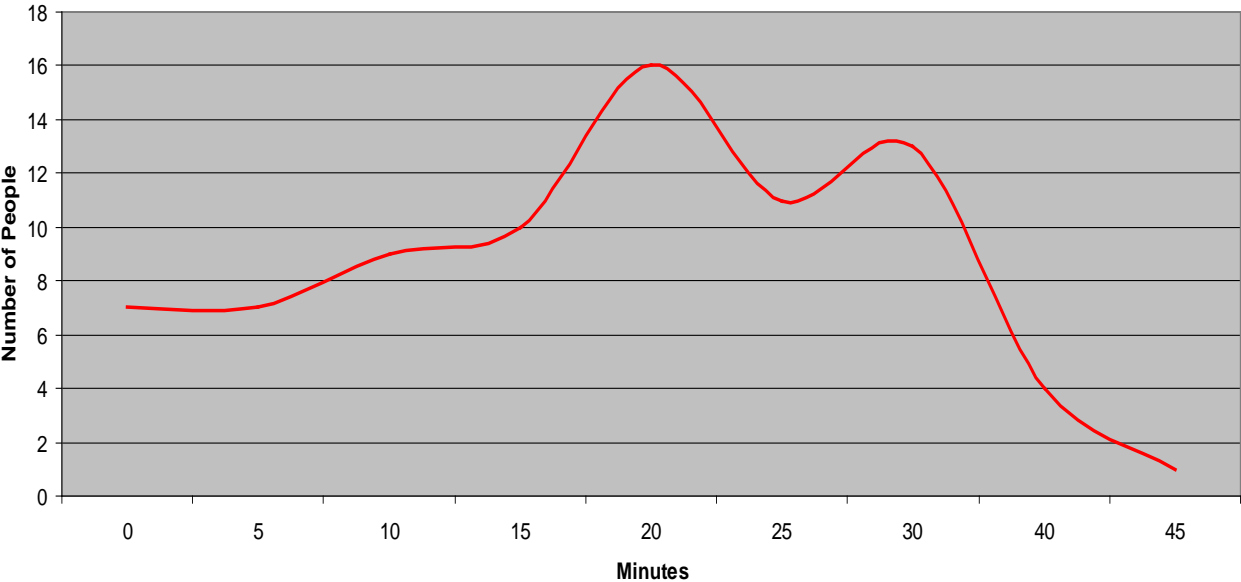
| | | |
|-----|---|-----------------|
| 5.a | How many minutes does your commute to work take? | See Chart Below |
| 5.b | On a typical weekday, record minutes of travel time for each listed mode. | See Chart Below |

| | | | | | | | | | |
|---|---|-------|---------------------|-------|---------------|----------------------|--------------------------------|---------------|---------------|
| 6 | What are the major barriers to walking/ bicycling in your neighborhood? | Crime | Fast Moving Traffic | Noise | Exhaust Fumes | Destinations Too Far | Inconsistent Sidewalk Coverage | Poor Lighting | No Bike Lanes |
| | | 7% | 62% | 3% | 6% | 11% | 68% | 35% | 4% |

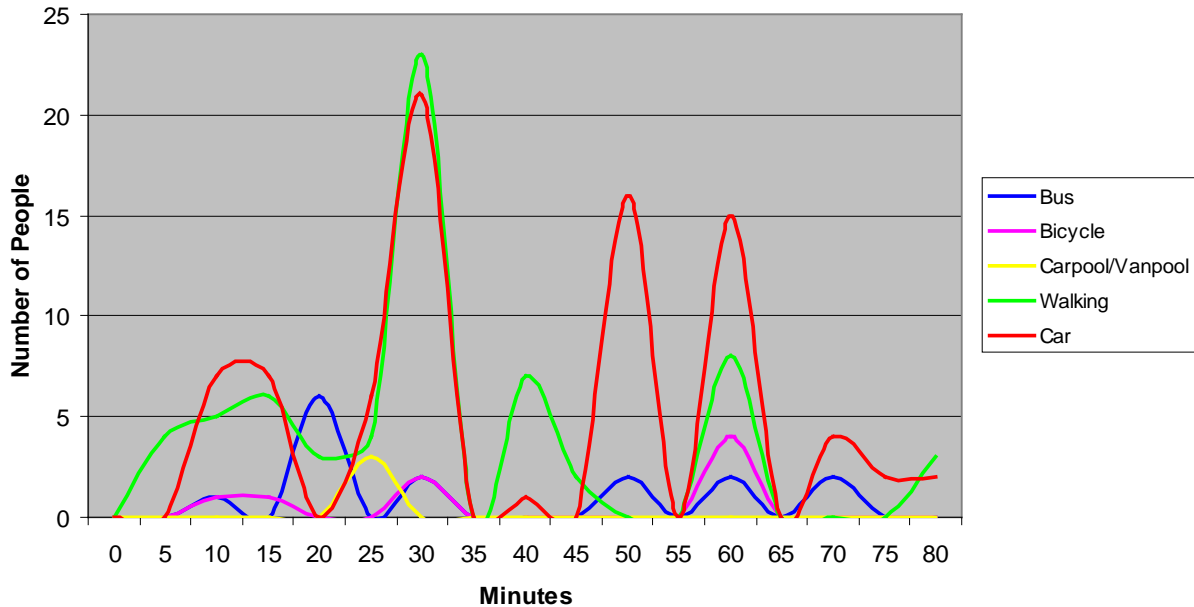
| | | | | | |
|------|------------------|--------------------|-----------|-------|------------------------|
| Time | Careless Drivers | Streets Too Narrow | MLK Blvd. | Hilly | Narrow Sidewalk Buffer |
| 2% | 4% | 1% | 2% | 1% | 2% |

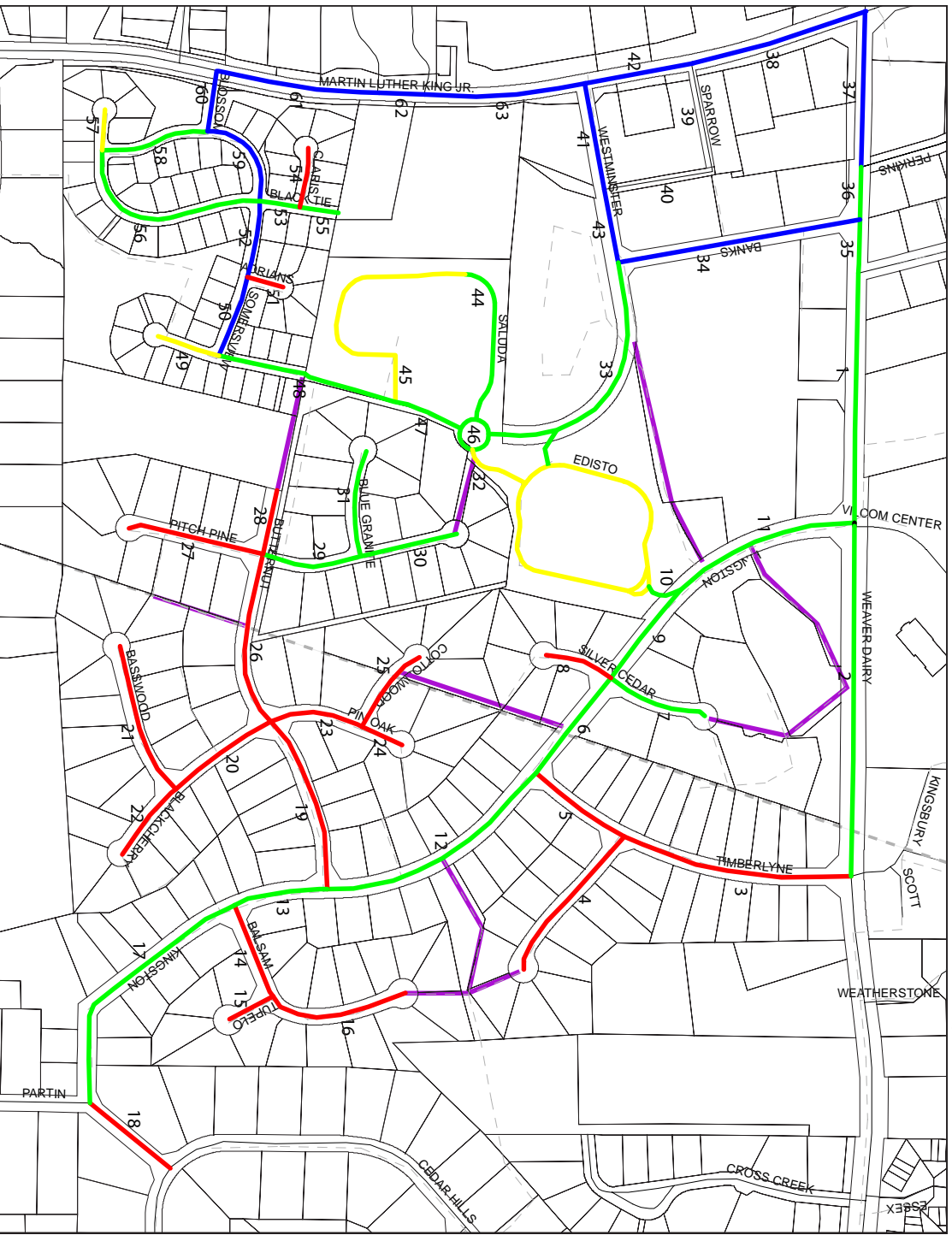
| | | | | | | | | | |
|---|--|--------------|----------------|----------------|--------------|--------------------|--------------|-------------|-------------|
| 7 | If there were the following organizations in your neighborhood, would you participate? | Walking Club | Bicycling Club | Gardening Club | Running Club | Moms/ Parents Club | Flying Cclub | Dinner Club | Crafts Club |
| | | 36% | 15% | 23% | 2% | 2% | 1% | 1% | 1% |

How Many Minutes Does Your Commute To Work Take?

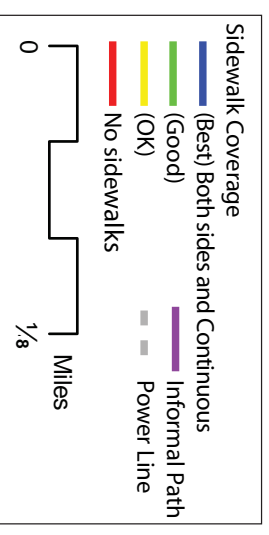


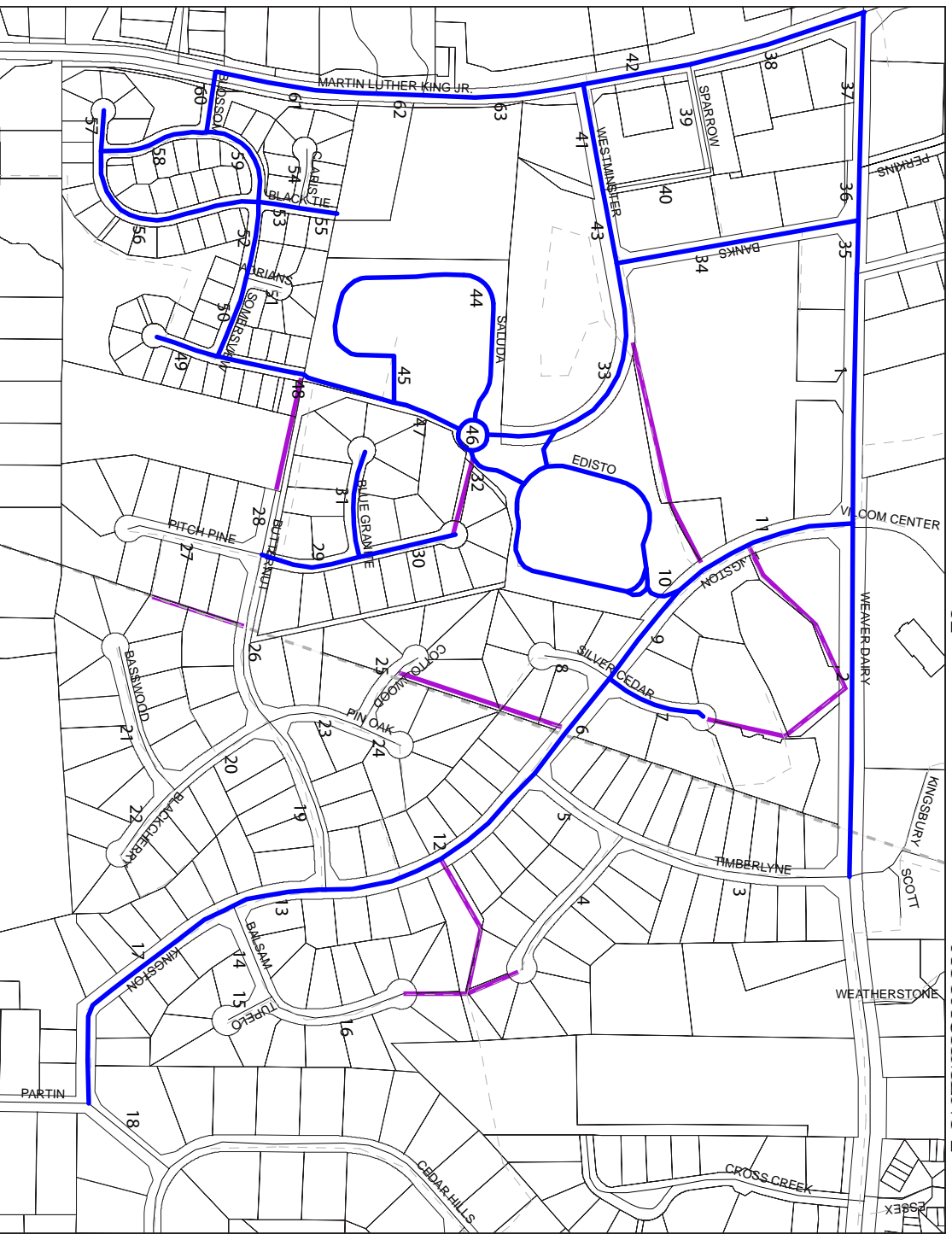
Recorded Minutes of Travel Time per Transportation Mode



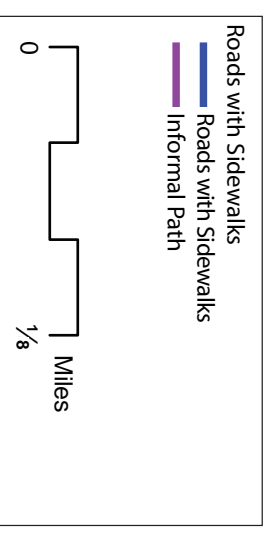


Timberlyne Pedestrian Mobility Audit Area Results Sidewalk Coverage Ratings February, 2007

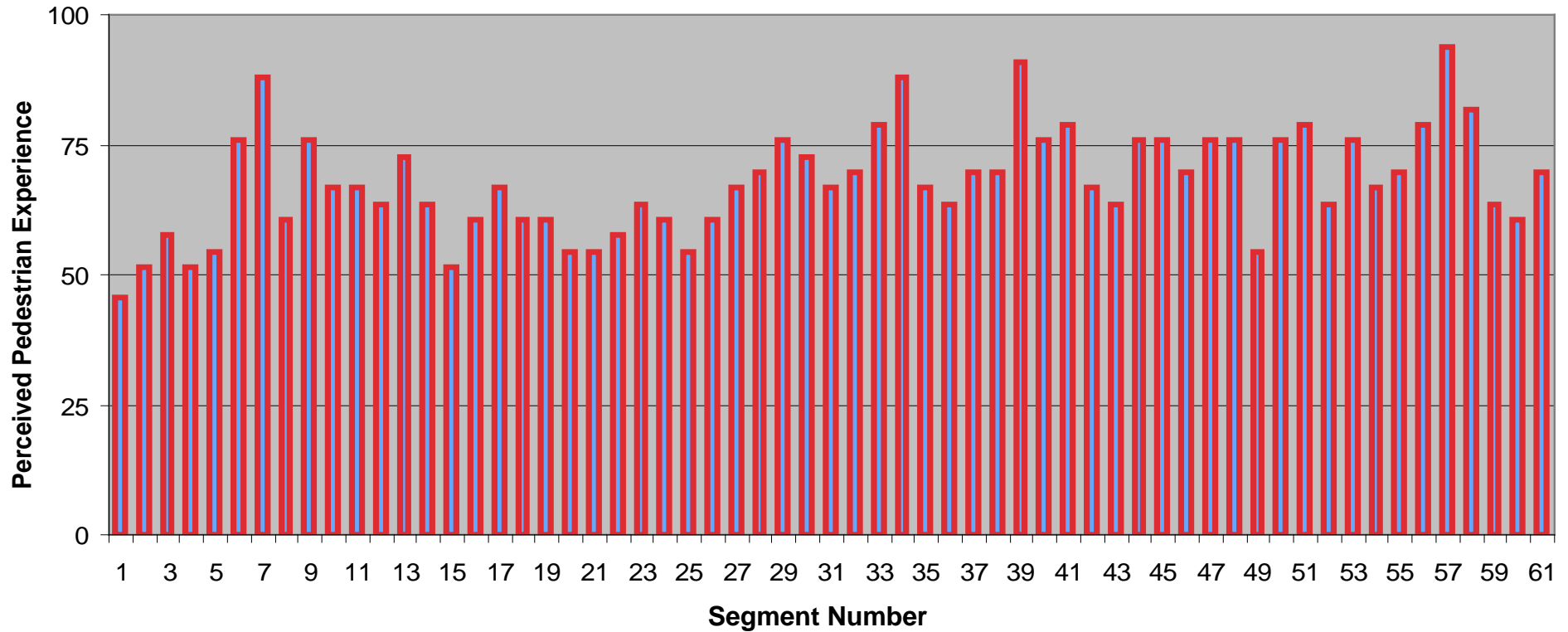




Timberlyne Pedestrian Mobility Audit Area Results Roads with Sidewalk Coverage February, 2007



Pedestrian Experience



100 - represents BEST pedestrian experience.
0 - represents WORST pedestrian experience.

Scores Based on Audit Criteria Including:

| | |
|--|---------------------------|
| Posted Speed Limit, | Sidewalk Condition, |
| Street Condition, | Curb Ramps, |
| Slope, | Pedestrian Crossing Aids, |
| Vehicle Travel Direction, | Amenities, |
| Number of Lanes, | Dog Presence, |
| Number of Lanes a Pedestrian Must Cross, | Shade, |
| Street Obstructions, | Litter |
| Sidewalk Buffer, | |

Timberlyne Study Area: Summary of Problem Streets

In addition to the audit results certain problem areas were identified by residents. Table 1 shows a summary of the segments that are requested for attention by residents. Highlighted segments indicates that more than one person cited this location as a problem.

General comments included lack of lighting throughout neighborhood, presence/ visibility of speed limit signs, need for better stripping, and color reflecting material on streets.

Table 1: Summary of Segments that are Suggested for Attention

| Segment | Problem | Suggestions by residents |
|---------|---|--|
| 1 | Crossing Weaver Dairy | -Crosswalk across Weaver Dairy at entrance to trailer park, -Crosswalk at Bank Drive, -Crosswalk at Perkins Drive |
| 2 | Just Unsafe, no sidewalk, no crosswalk | -crosswalk from Timberlyne Road across Weaver Dairy at bus stop |
| 3 | Safety walking, speeding cars, school bus stop. | |
| 6 | Poison Ivy on east side | |
| 9 | Crossing street, dangerous curve, wide road | -Sidewalk on both sides of street -crosswalk at Silver Cedar and Kingston |
| 10 | No curb ramp, crossing difficult, no sidewalk west side | -Sidewalk on Kingston Drive from Silver Cedar to Children's Camp -Curb ramp at Kingston Drive |
| 11 | Major pedestrian connector, dangerous curb, Postperson hit in the past. | -sidewalk on both sides -crosswalk at Silver Cedar/Kingston intersection -crosswalk at Shopping Center Driveway rather than at back of building -enhanced entrance behind Timberlyne -crosswalks on all sides of Kingston/Weaver Dairy |
| 17 | Speeding traffic, stop sign running, curvy, no lines at intersections | -Posted "Narrow and Curvy Road" |
| 19 | School Bus Stop, visibility of speed limit signs, stop sign running, major pedestrian connector | -Crosswalk or raised crosswalk needed at intersection of Butternut and Kingston, -check speed limit signs for visibility, -Install sidewalk |
| 20 | Pavement different textures, blind crest in hill for fast traffic | -Smooth out pavement -Vehicle caution signs -no outlet sign on Blackcherry Lane off of Butternut |
| 26 | Speed limit sign | -Install sidewalk, -Check speed limit signs |
| 28 | Pathway behind is TLC land, Dumping ground. | |
| 33 | Cracks on sidewalk | |
| 50 | Stop Line Not Painted | Paint stop line |
| 51 | No crosswalk | |
| 56 | Cracks on sidewalk | |
| 60 | Stop line, Pedestrian Crossing | Paint stop line |
| 60 @ 61 | Pedestrian Crossing | Crosswalk, Traffic Light, crossing light |
| 63 | Dangerous to cross MLK | -timed crossing light at Homestead and MLK |