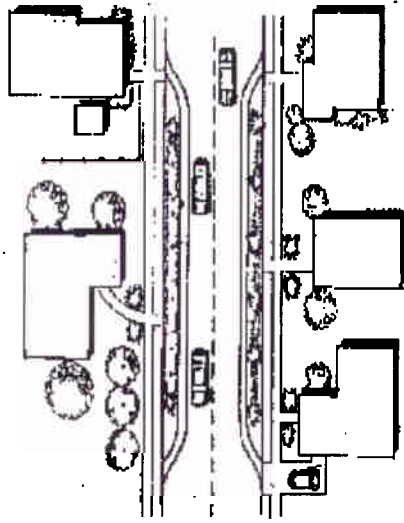


Potential Traffic Calming Measures

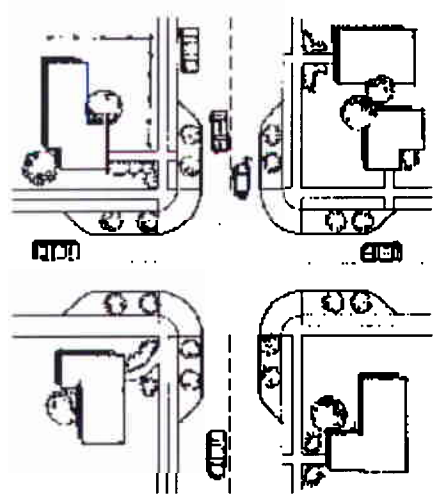
Traffic Calming Measure	Description	Primary Function
Narrow Lanes	Lanes narrowed by sidewalk extensions, bollards, planters, parking	Reduce cut-through traffic
Chokers	Curb extensions that narrow roadway to a single lane at points	Reduce cut-through traffic
Bulb out/Neck Down/Curb Extension	narrows the width of the street and is used in combination with crosswalk markings	Reduce cut-through traffic
Chicane	a barricaded, tightly curved, or zig-zagged roadway that forces traffic to slow while still permitting it to pass	Reduce cut-through traffic
Traffic Circle	A circular one-way road at a junction of streets, facilitating an uninterrupted flow of traffic	Reduce speeds
Speed Bump	A raised pavement area across a roadway that generally has a height of 3 to 6 inches with a length of 1 to 3 feet.	Reduce speeds
Speed Hump	Raised pavement area normally have a maximum height of 3 to 4 inches with a travel length of approximately 12 feet.	Reduce speeds
Speed Table	Long, flat-topped speed humps that slow cars more gradually than speed humps	Reduce speeds
Raised Crosswalk	Combination of speed table and crosswalk	Reduce speeds
Speed Cushions	Series of three small speed humps that slow cars down but allow emergency vehicles to straddle	Reduce speeds

Traffic Calming Options

Choker – to narrow lanes

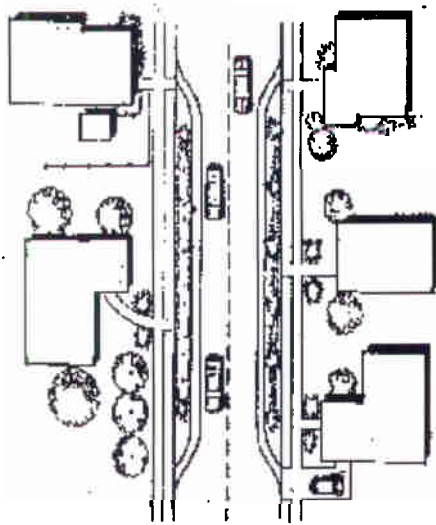


Curb Extension with Speed Hump



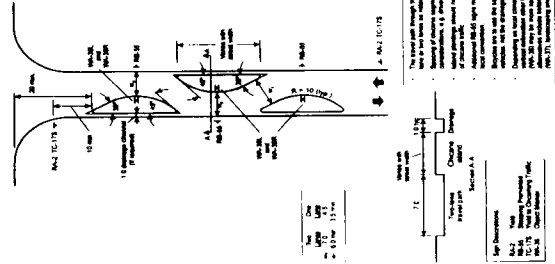
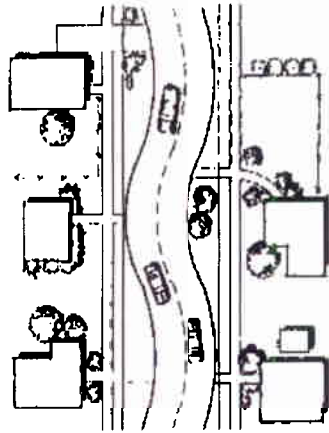
Traffic Calming Options

Mid-block Curb Extensions



with Crosswalk

Chicane - One Way



Item	Description
1	As Shown
2	As Shown
3	As Shown

The road width through the chicane on the left shall be for two-way traffic. The road width through the chicane on the right shall be for one-way traffic. The road width through the chicane on the right shall be for one-way traffic. The road width through the chicane on the right shall be for one-way traffic.

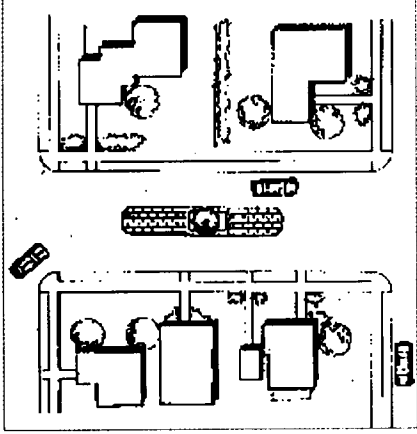
Section A-A

Scale: 1" = 20'-0"



with Speed Hump

Medians





Traffic Circles

