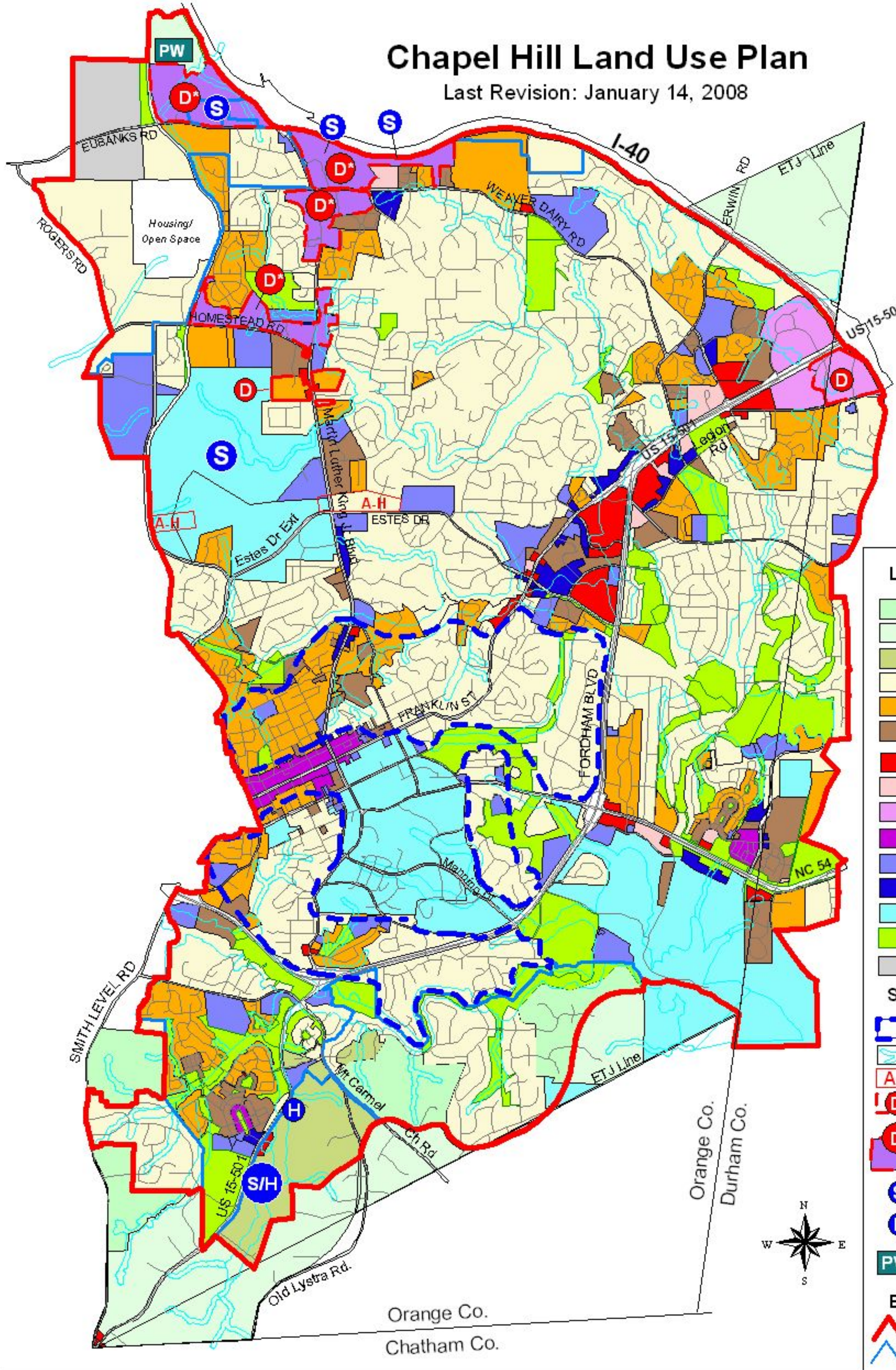


Chapel Hill Land Use Plan

Last Revision: January 14, 2008



Legend

Land Use Categories

- Rural Residential, 1 unit /5 ac.
- Rural Residential, 1 unit /2 to 5 ac.
- Low Residential, 1 unit /ac.
- Low Residential, 1-4 units /ac.
- Medium Residential, 4-8 units /ac.
- High Residential, 8-15 units /ac.
- Commercial
- Mixed Use, Office/Com. Emphasis
- Mixed Use, Office Emphasis
- Town/Village Center
- Institutional
- Office
- University
- Parks/Open Space
- Landfill Activities

Special Areas

- Residential Conservation Area
- Floodplain with RCD (estimated)
- A-H: Airport Hazard
- Development Opportunity Area
- Development Opportunity Area *Refer to Northern Area Task Force Report
- Potential School Site
- Potential Affordable Housing Site
- Potential Public Works Facility Site

Boundaries

- Urban Service Boundary
- City Limits, 2006

REVISIONS

Adopted: May 8, 2000
 Revised: 11/13/2000 * 3/04/02
 9/07/04 * 5/09/05 * 1/14/08

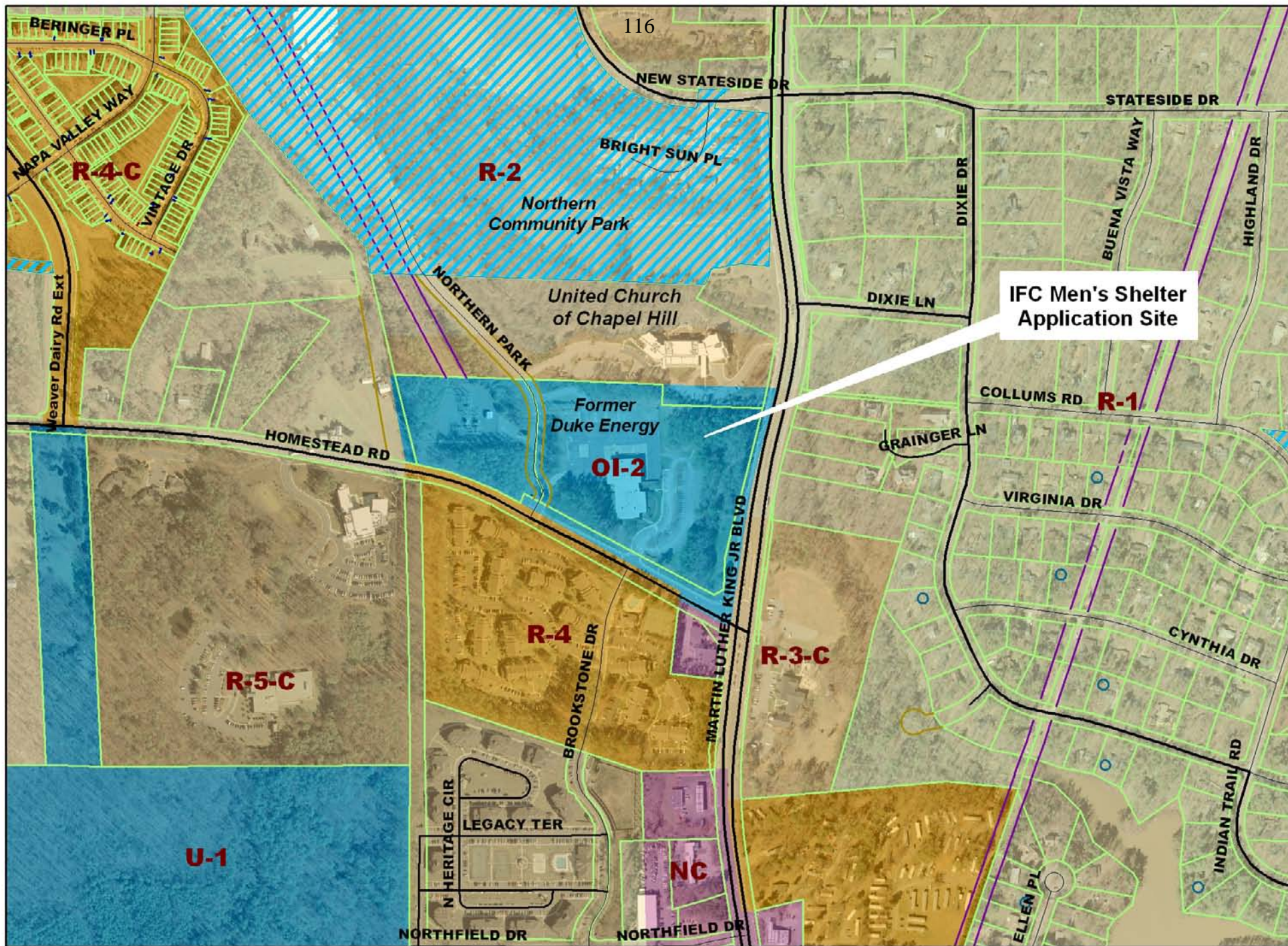
2000 0 2000 Feet

Figure 11
The Land Use Plan
 Comprehensive Plan
 Chapel Hill, North Carolina
 Revised January 14, 2008

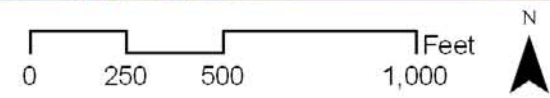


Aerial of Area around IFC Men's Shelter Application Site



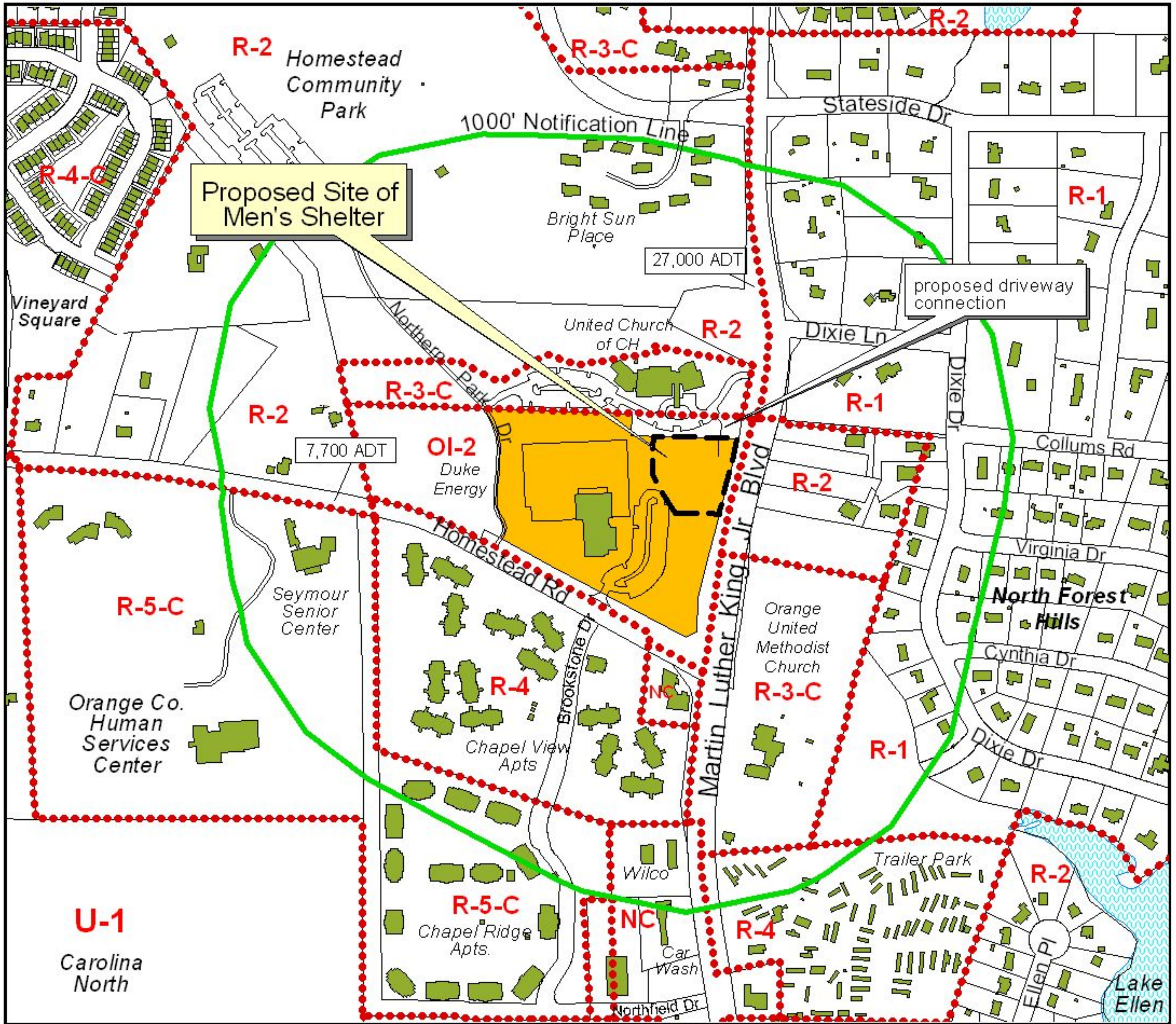



Chapel Hill Zoning in Area of IFC Men's Shelter Application Site








Area Map The Interfaith Council's Community Men's Shelter





 Proposed Site of Interfaith Council's Community Men's Shelter on State of NC property

 Buildings

 Chapel Hill Zoning

 Average Daily Traffic (2007 Data)

 N

 500 0 500 Feet

GIS Map prepared by
Town of Chapel Hill
Planning Department
September, 2009