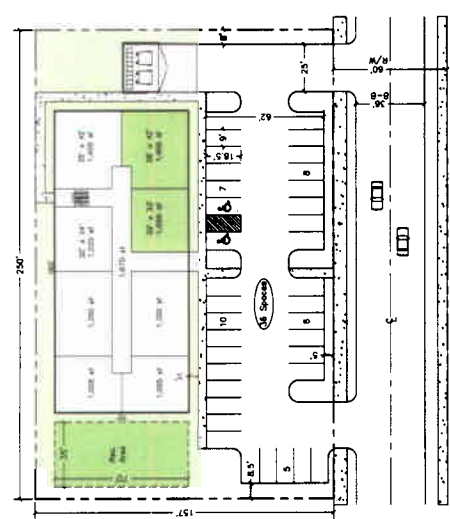


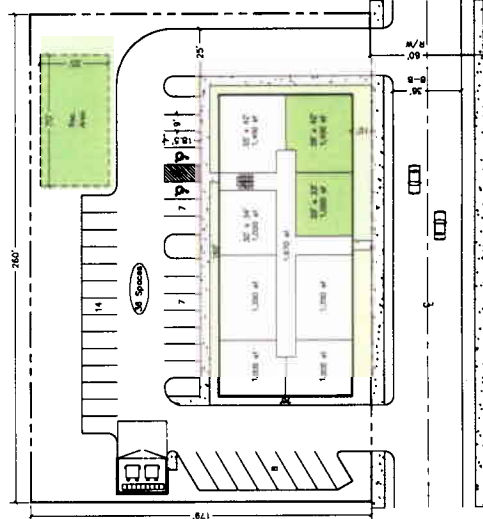
**TC-1 / 2 (model 2a)**  
 FAR: .875  
 Net Land Area: 47,477 SF  
 Gross Land Area: 48,228 SF  
 Gross Land Area: 1.2 AC  
 Number of Dwelling Units: 32 DU  
 DU/AC: 27  
 Building Height: 4 Stories  
 Principal Building Area: 11,200 SF  
 Impervious Surface: 31,315 SF  
 Percentage GLA w/ Imperv Surface: 80%  
 Required Recreation: 12% of site: 4,710 SF



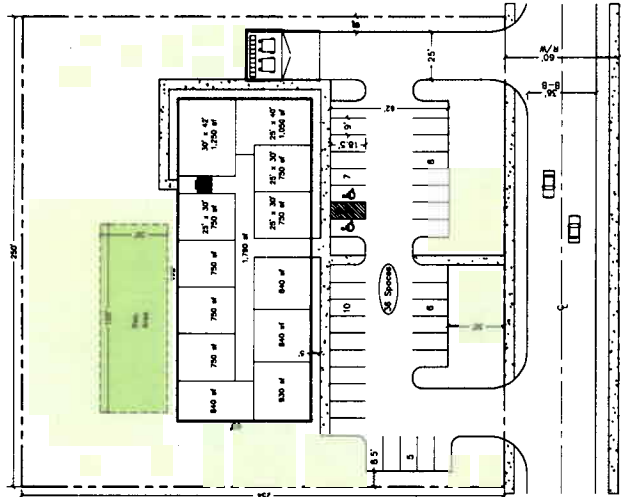
**TC-1 / 2 (model 2c)**  
 FAR: 1.23  
 Net Land Area: 49,947 SF  
 Gross Land Area: 54,912 SF  
 Gross Land Area: 1.3 AC  
 Number of Dwelling Units: 48 DU  
 DU/AC: 35  
 Building Height: 6 Stories  
 Principal Building Area: 11,200 SF  
 Impervious Surface: 31,315 SF  
 Percentage GLA w/ Imperv Surface: 88.7%  
 Required Recreation: 12% of site: 4,710 SF



**TC-1 / 2 (model 1)**  
 FAR: 1.039  
 Net Land Area: 39,250 SF  
 Gross Land Area: 43,175 SF  
 Gross Land Area: .99 AC  
 Number of Dwelling Units: 30 DU  
 DU/AC: 30  
 Building Height: 4 Stories  
 Principal Building Area: 11,200 SF  
 Impervious Surface: 27,543 SF  
 Percentage GLA w/ Imperv Surface: 83.7 %  
 Required Recreation: 12% of site: 4,710 SF

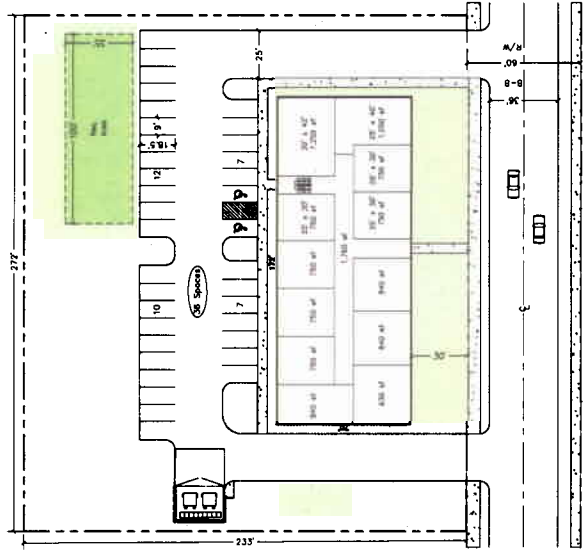


**TC-1 / 2 (model 2b)**  
 FAR: .875  
 Net Land Area: 46,540 SF  
 Gross Land Area: 51,194 SF  
 Gross Land Area: 1.2 AC  
 Number of Dwelling Units: 30 DU  
 DU/AC: 25  
 Building Height: 4 Stories  
 Principal Building Area: 11,200 SF  
 Impervious Surface: 30,776 SF  
 Percentage GLA w/ Imperv Surface: 66.1 %  
 Required Recreation: 12% of site: 4,710 SF



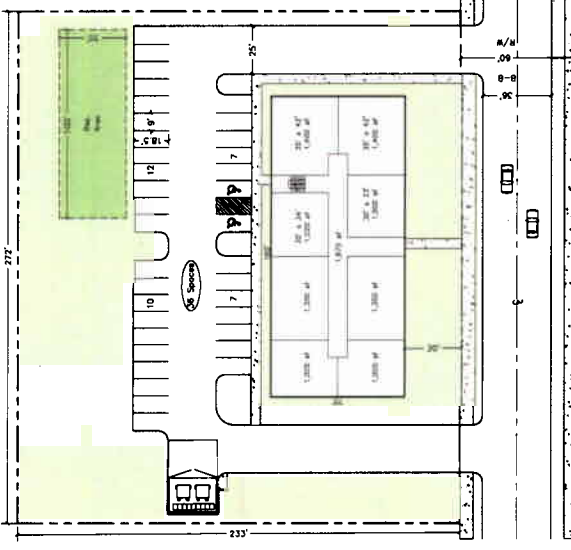
**R-5 (model 1)**

FAR: .345  
 Net Land Area: 63,360 SF  
 Gross Land Area: 69,696 SF  
 Gross Land Area: 1.6 AC  
 Number of Dwelling Units: 24 DU  
 DU/AC: 15  
 Building Height: 2 Stories  
 Principal Building Area: 12,040 SF  
 Impervious Surface: 28,875 SF  
 Percentage GLA w/ Imperv Surface: 42.6%  
 Required Recreation: 5% of site: 3,485 SF



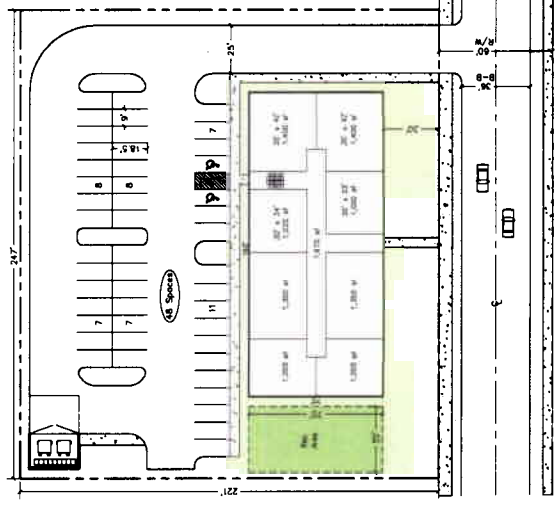
**R-5 (model 2a)**

FAR: .345  
 Net Land Area: 63,360 SF  
 Gross Land Area: 69,696 SF  
 Gross Land Area: 1.6 AC  
 Number of Dwelling Units: 24 DU  
 DU/AC: 15  
 Building Height: 2 Stories  
 Principal Building Area: 12,040 SF  
 Impervious Surface: 28,875 SF  
 Percentage GLA w/ Imperv Surface: 42.2%  
 Required Recreation: 5% of site: 3,485 SF



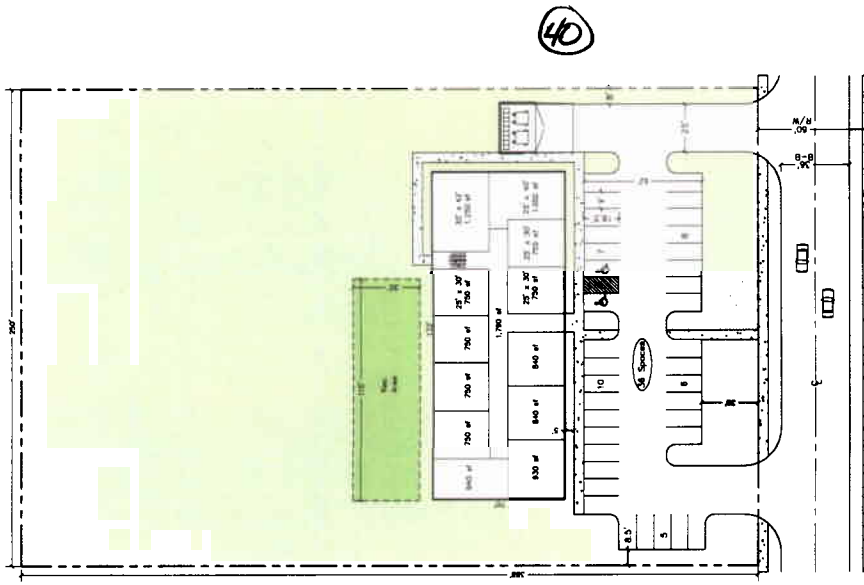
**R-5 (model 2b)**

FAR: .482  
 Net Land Area: 63,360 SF  
 Gross Land Area: 69,696 SF  
 Gross Land Area: 1.6 AC  
 Number of Dwelling Units: 24 DU  
 DU/AC: 15  
 Building Height: 3 Stories  
 Principal Building Area: 11,200 SF  
 Impervious Surface: 32,004 SF  
 Percentage GLA w/ Imperv Surface: 48.0%  
 Required Recreation: 5% of site: 3,485 SF



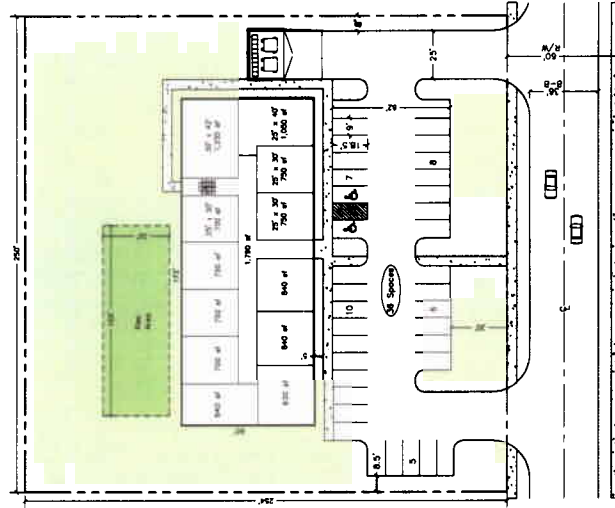
**R-5 (model 2c)**

FAR: .746  
 Net Land Area: 54,587 SF  
 Gross Land Area: 60,046 SF  
 Gross Land Area: 1.4 AC  
 Number of Dwelling Units: 32 DU  
 DU/AC: 23  
 Building Height: 4 Stories  
 Principal Building Area: 11,200 SF  
 Impervious Surface: 38,319 SF  
 Percentage GLA w/ Imperv Surface: 63.6%  
 Required Recreation: 5% of site: 2,490 SF



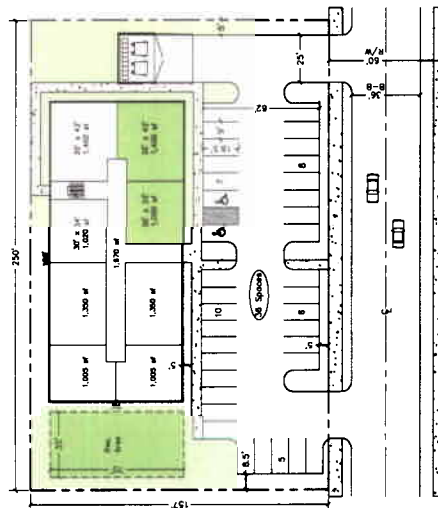
### R-4 (model 1)

FAR: 230  
 Net Land Area: 97,044 SF  
 Gross Land Area: 164,544 SF  
 Gross Land Area: 2.4 AC  
 Number of Dwelling Units: 24 DU  
 DU/AC: 10 DU  
 Building Height: 2 Stories  
 Principal Building Area: 12,040 SF  
 Principal Building Area: 28,059 SF  
 Percentage GLA w/ Impervious Surface: 38.8%  
 Required Recreation: 3.8% of site: 4,077 SF



### R-5 (model 1)

FAR: 321  
 Net Land Area: 63,360 SF  
 Gross Land Area: 99,096 SF  
 Gross Land Area: 1.8 AC  
 Number of Dwelling Units: 24 DU  
 DU/AC: 15 DU  
 Building Height: 2 Stories  
 Principal Building Area: 11,208 SF  
 Principal Building Area: 28,059 SF  
 Percentage GLA w/ Impervious Surface: 42.6%  
 Required Recreation: 5% of site: 3,465 SF



### TC-1 / 2 (model 1)

FAR: 1008  
 Net Land Area: 39,250 SF  
 Gross Land Area: 43,175 SF  
 Gross Land Area: .99 AC  
 Number of Dwelling Units: 30 DU  
 DU/AC: 30  
 Building Height: 4 Stories  
 Principal Building Area: 11,208 SF  
 Principal Building Area: 27,348 SF  
 Percentage GLA w/ Impervious Surface: 63.7%  
 Required Recreation: 12% of site: 4,710 SF