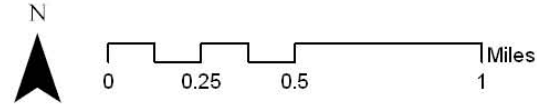
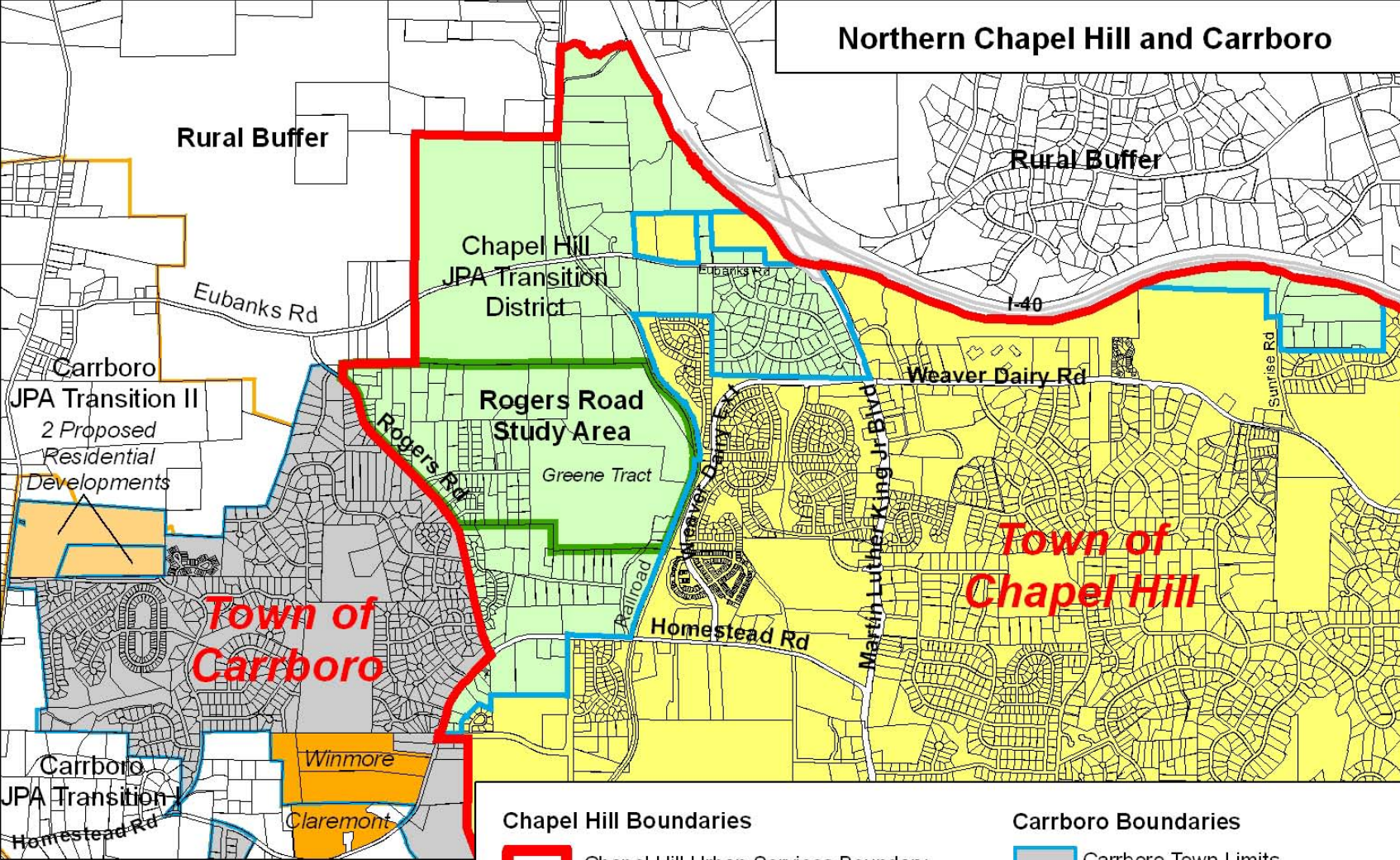


Northwest Chapel Hill Study Area

March 7, 2007

Northern Chapel Hill and Carrboro



Chapel Hill Boundaries

- Chapel Hill Urban Services Boundary
- Chapel Hill Joint Planning Transition Area
- Rogers Road Study Area
- Chapel Hill Town Limits

Carrboro Boundaries

- Carrboro Town Limits
- Carrboro JPA Transition Districts I & II

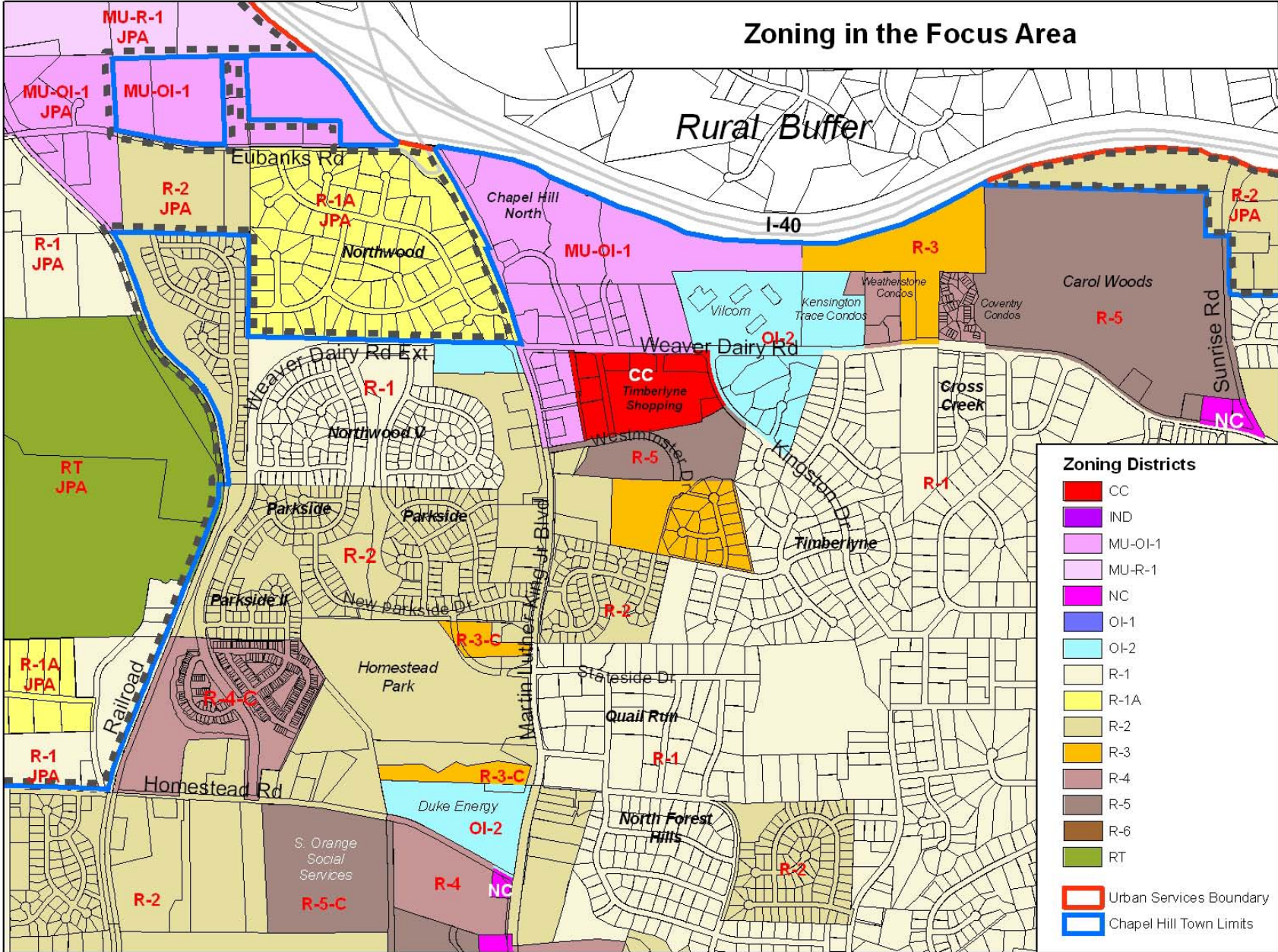
Carrboro Development Projects

- Carrboro Projects Under Constr.
- Carrboro Proposed Projects

Zoning in the Focus Area

Rural Buffer

I-40

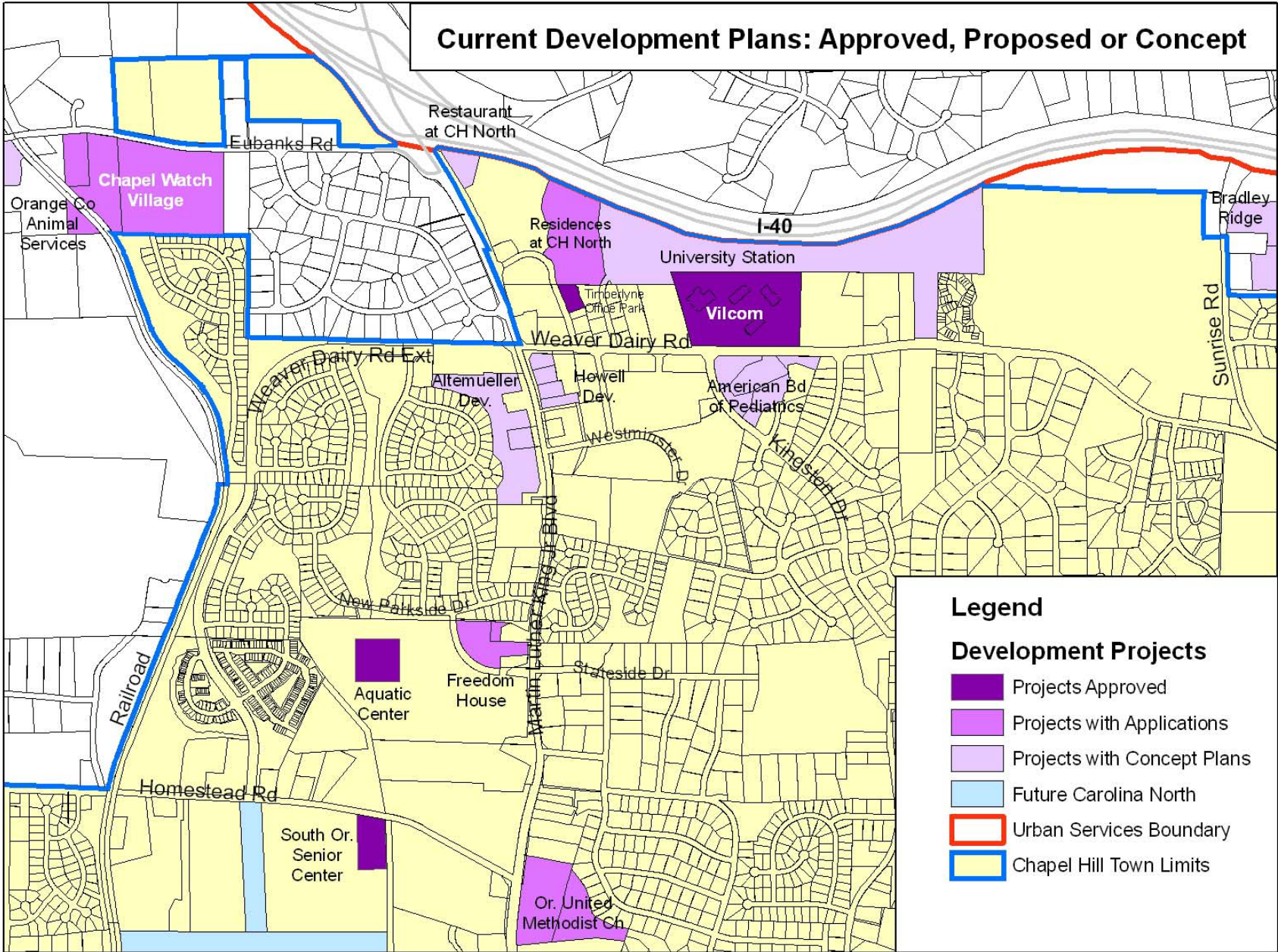


Zoning Districts

- CC
 - IND
 - MU-OI-1
 - MU-R-1
 - NC
 - OI-1
 - OI-2
 - R-1
 - R-1A
 - R-2
 - R-3
 - R-4
 - R-5
 - R-6
 - RT
- Urban Services Boundary
- Chapel Hill Town Limits

..... JPA: Joint Planning Area Zoning Districts

Current Development Plans: Approved, Proposed or Concept

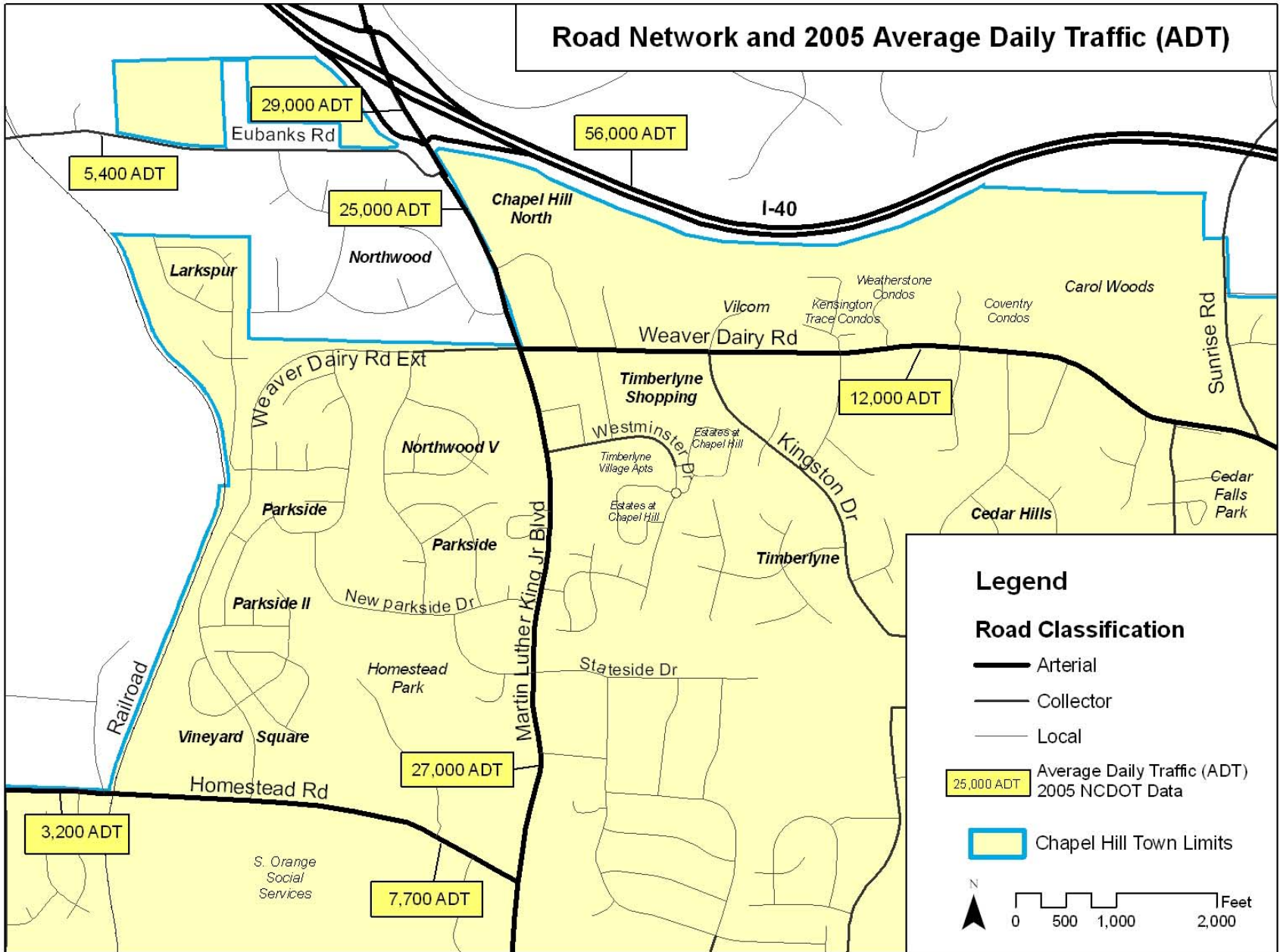


Legend

Development Projects

- Projects Approved
- Projects with Applications
- Projects with Concept Plans
- Future Carolina North
- Urban Services Boundary
- Chapel Hill Town Limits

Road Network and 2005 Average Daily Traffic (ADT)



5,400 ADT

29,000 ADT

56,000 ADT

25,000 ADT

12,000 ADT

27,000 ADT

3,200 ADT

7,700 ADT

Eubanks Rd

Chapel Hill North

I-40

Larkspur

Northwood

Weatherstone Condos
Kensington Trace Condos

Coventry Condos

Carol Woods

Sunrise Rd

Weaver Dairy Rd

Timberlyne Shopping

Kingston Dr

Cedar Falls Park

Cedar Hills

Weaver Dairy Rd Ext

Northwood V

Parkside

Parkside

Timberlyne

Parkside II

New parkside Dr

Homestead Park

Stateside Dr

Vineyard Square

Homestead Rd

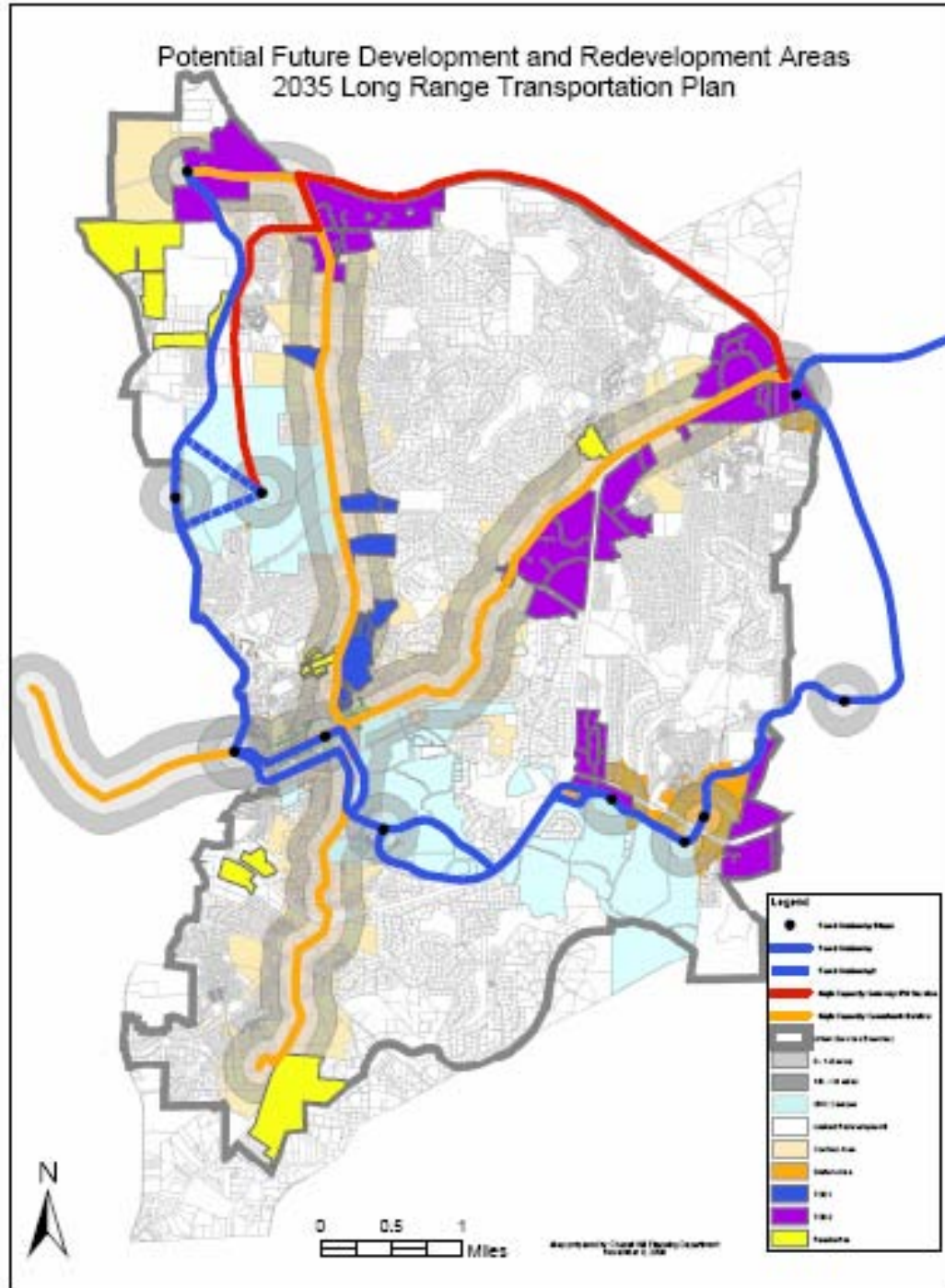
Martin Luther King Jr Blvd

S. Orange Social Services

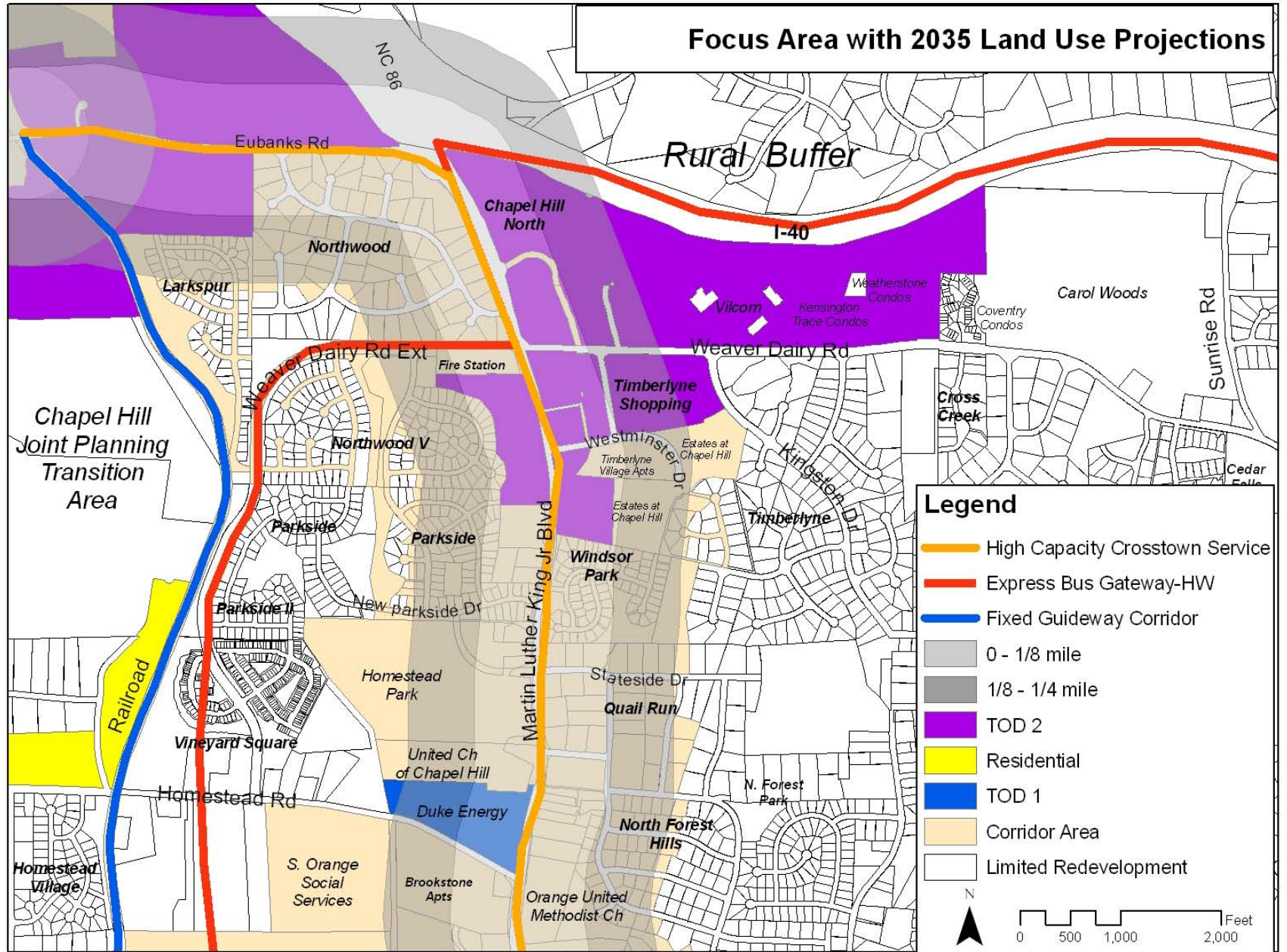
2005 Traffic Conditions



Potential Future Development and Redevelopment Areas
2035 Long Range Transportation Plan



Focus Area with 2035 Land Use Projections



Legend

- High Capacity Crosstown Service
- Express Bus Gateway-HW
- Fixed Guideway Corridor
- 0 - 1/8 mile
- 1/8 - 1/4 mile
- TOD 2
- Residential
- TOD 1
- Corridor Area
- Limited Redevelopment

N

0 500 1,000 2,000 Feet

Total Boardings by Stop Northern Chapel Hill

October 2006



Legend

Bus Stops

Boardings

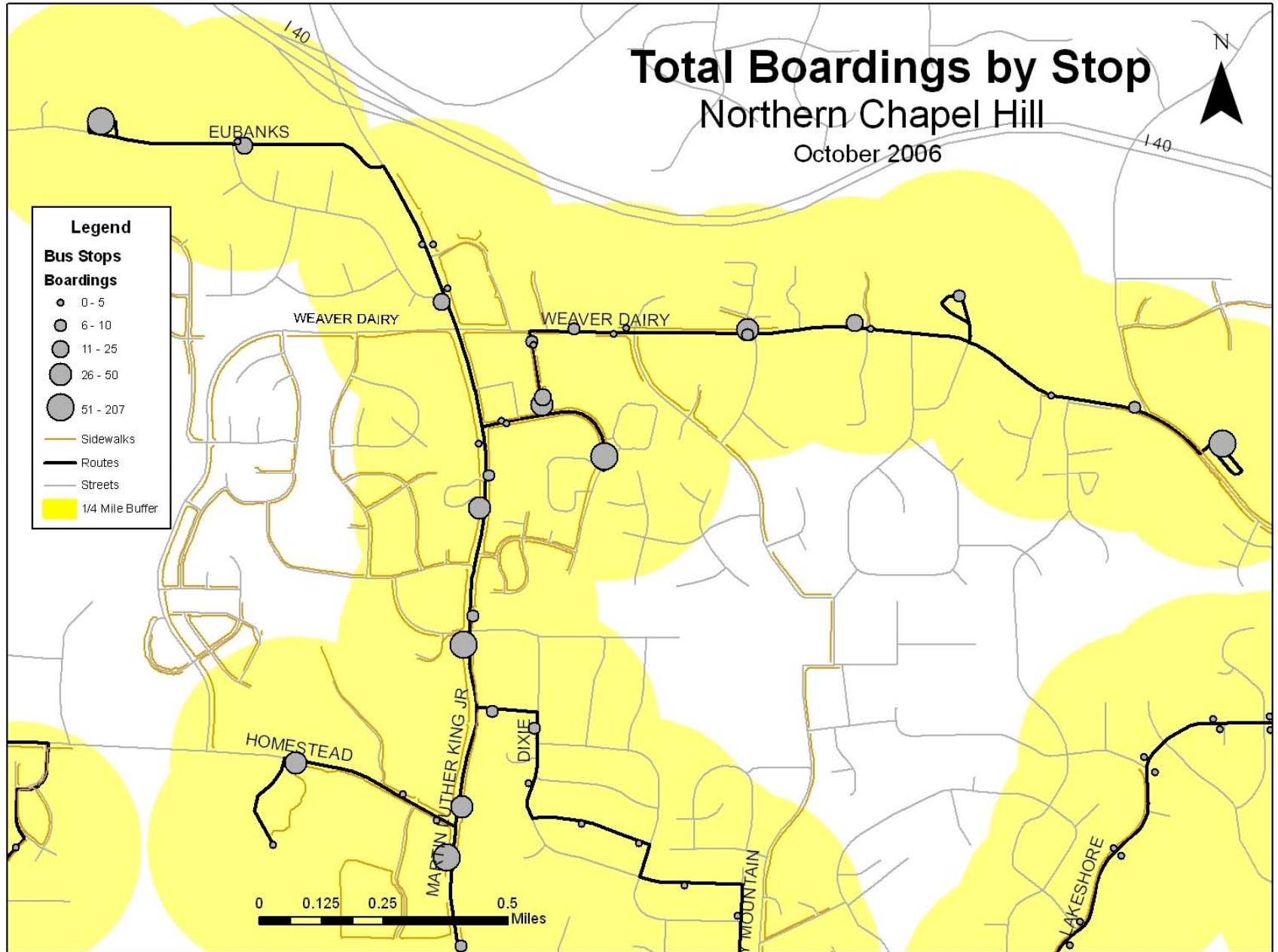
- 0 - 5
- 6 - 10
- 11 - 25
- 26 - 50
- 51 - 207

Sidewalks

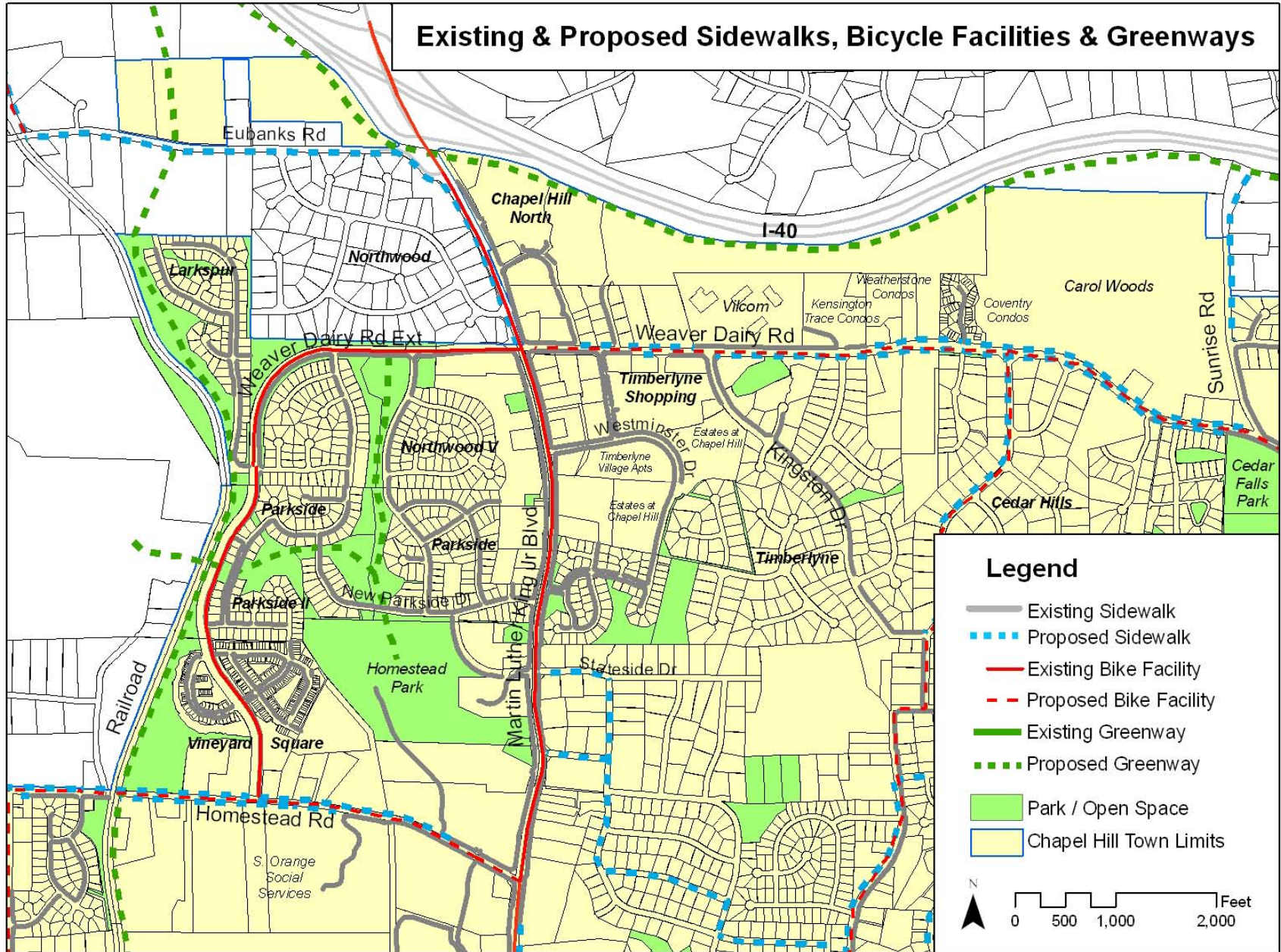
Routes

Streets

1/4 Mile Buffer

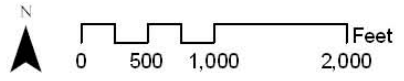


Existing & Proposed Sidewalks, Bicycle Facilities & Greenways



Legend

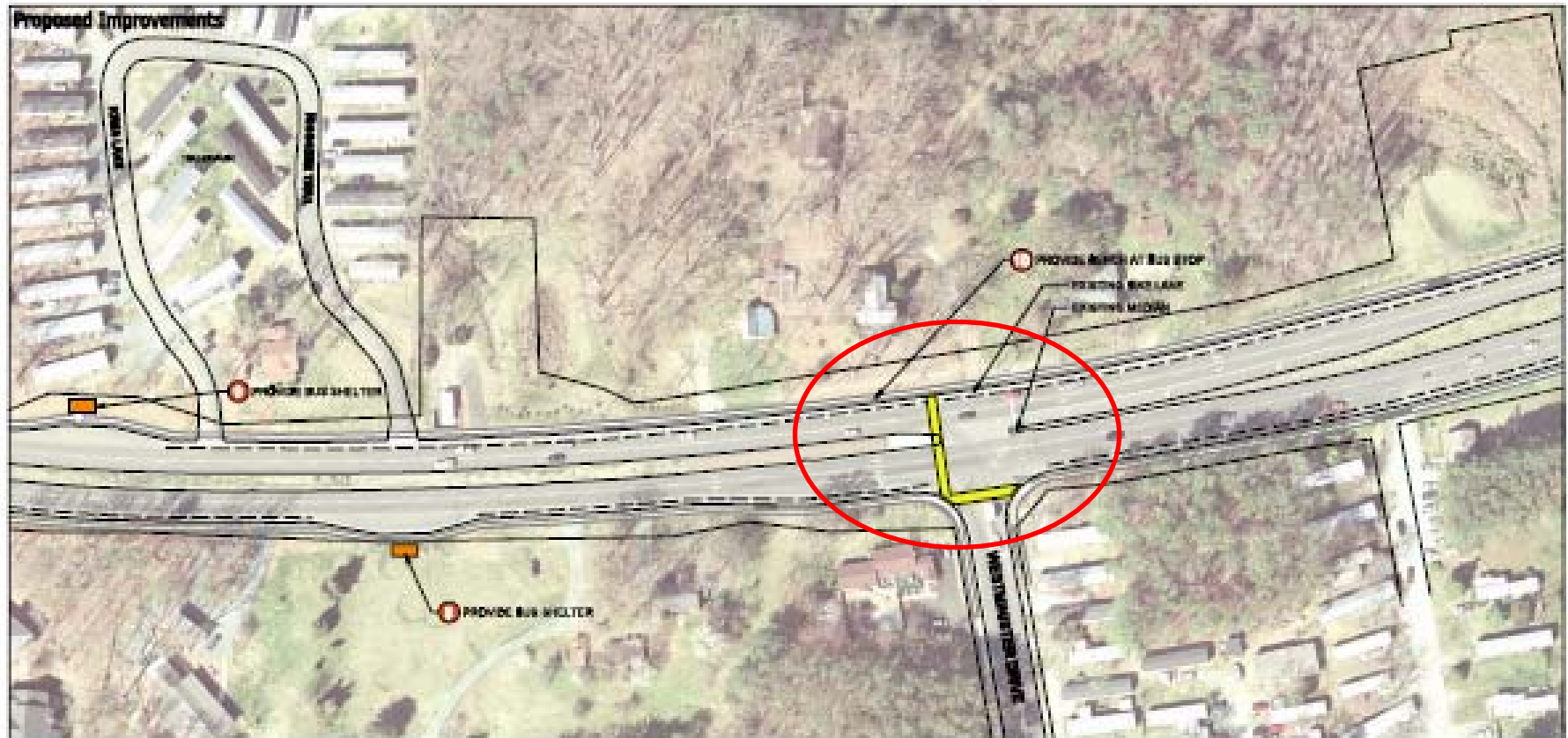
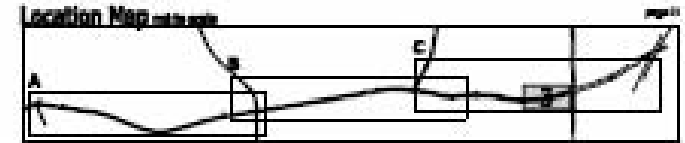
- Existing Sidewalk
- - - Proposed Sidewalk
- Existing Bike Facility
- - - Proposed Bike Facility
- Existing Greenway
- - - Proposed Greenway
- Park / Open Space
- Chapel Hill Town Limits



NC86 Pedestrian Study Recommendations – 1

Key

	RECONSTRUCT ROAD		BUS STOP/STATION		SEE RECOMMENDATION PLAN FOR THE DETAILS OF PROPOSED IMPROVEMENTS
	REPAIR/MAINT		BUS PULLOUT		
	STAIRWALK		BUS STOP POCKET		



**NC 86/Martin Luther King Jr. Boulevard Corridor
and Town-Wide Pedestrian Safety Evaluation Study**

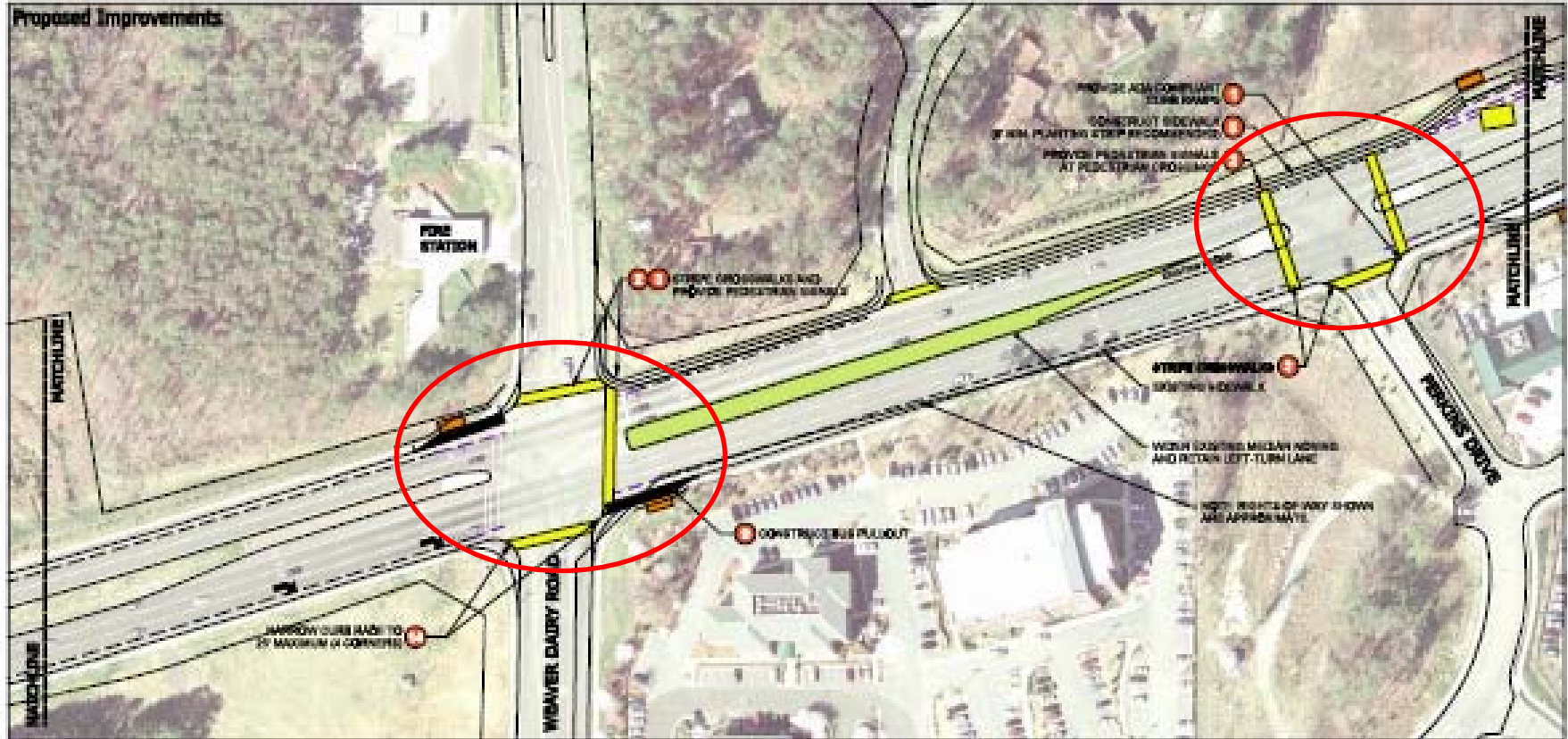
Logansport, IN
Perry, IN



NC86 Pedestrian Study Recommendations – 2

Key

Location Map



NC 86/Martin Luther King Jr. Boulevard Corridor and Town-Wide Pedestrian Safety Evaluation Study

Logans • Raleigh, PA • www.logans.com
 StreetSmart Associates, Inc. • Raleigh, NC

PLAN C4

Possible Intersection Design



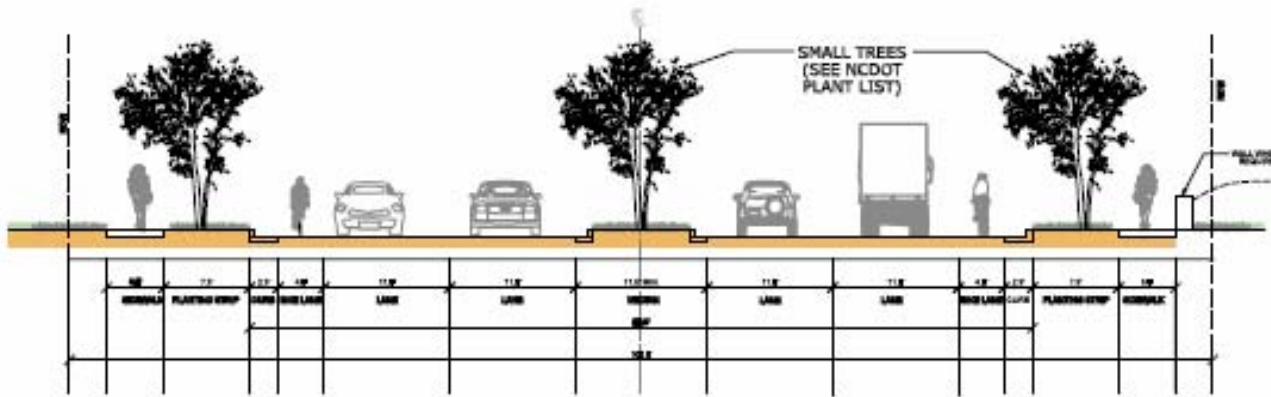
KEY to Improvements Shown*

- 1. Construct ADA-compliant curb ramps
- 2. Provide pedestrian signals
- 3. Stripe crosswalk
- 4. Construct sidewalk across driveway
- 5. Construct sidewalk with 6' min. planting strip
- 6. Provide median pocket
- 7. Construct stone retaining wall at back of walk
- 8. Stripe bike lanes

- 9. Construct bus pullout
- 10. Replace bench at bus stop
- 11. Widen Boulevard at Intersection
- 12. Stripe 1.1' wide travel lanes
- 13. Construct raised median
- 14. Narrow curb radius to 25 feet maximum

* Not all improvements shown in each illustration

Possible Martin Luther King Jr. Blvd. Design



Alternative A

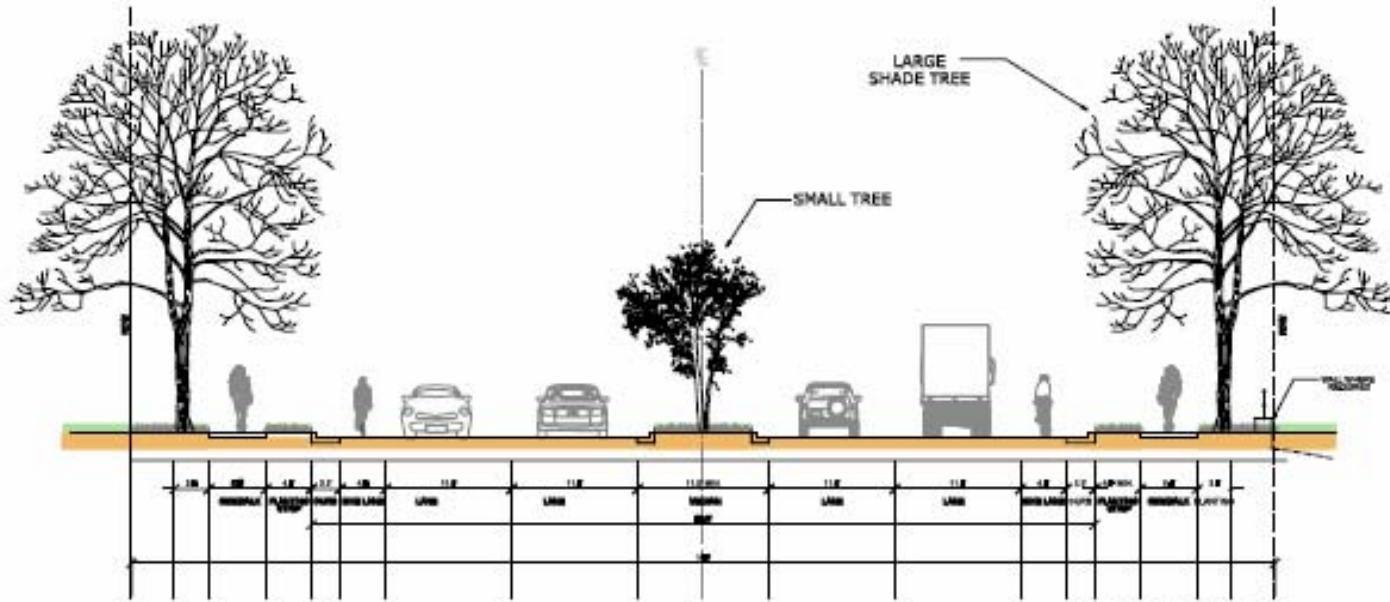
Given the preferred cross-sections discussed on the previous page, the integration of an elevated, landscaped median is illustrated by the following two alternatives:

ALTERNATIVE A

SECTION
The NCDOT minimum clearance from the base of curb to the top of a road sign is 14 feet for this roadway. Using a typical median curb and gutter width of 18 inches, the minimum width for a median sign post base is 11.8 feet, equivalent to the median width of road signs. This dimension, however, should be increased whenever additional posts.

PLANTING STRIP

Given the sign post base width, a 7.0' wide planting strip will accommodate a sign post placed 1.0' from the curb and 6.0' from the sidewalk, or about 4.0'.



Alternative B

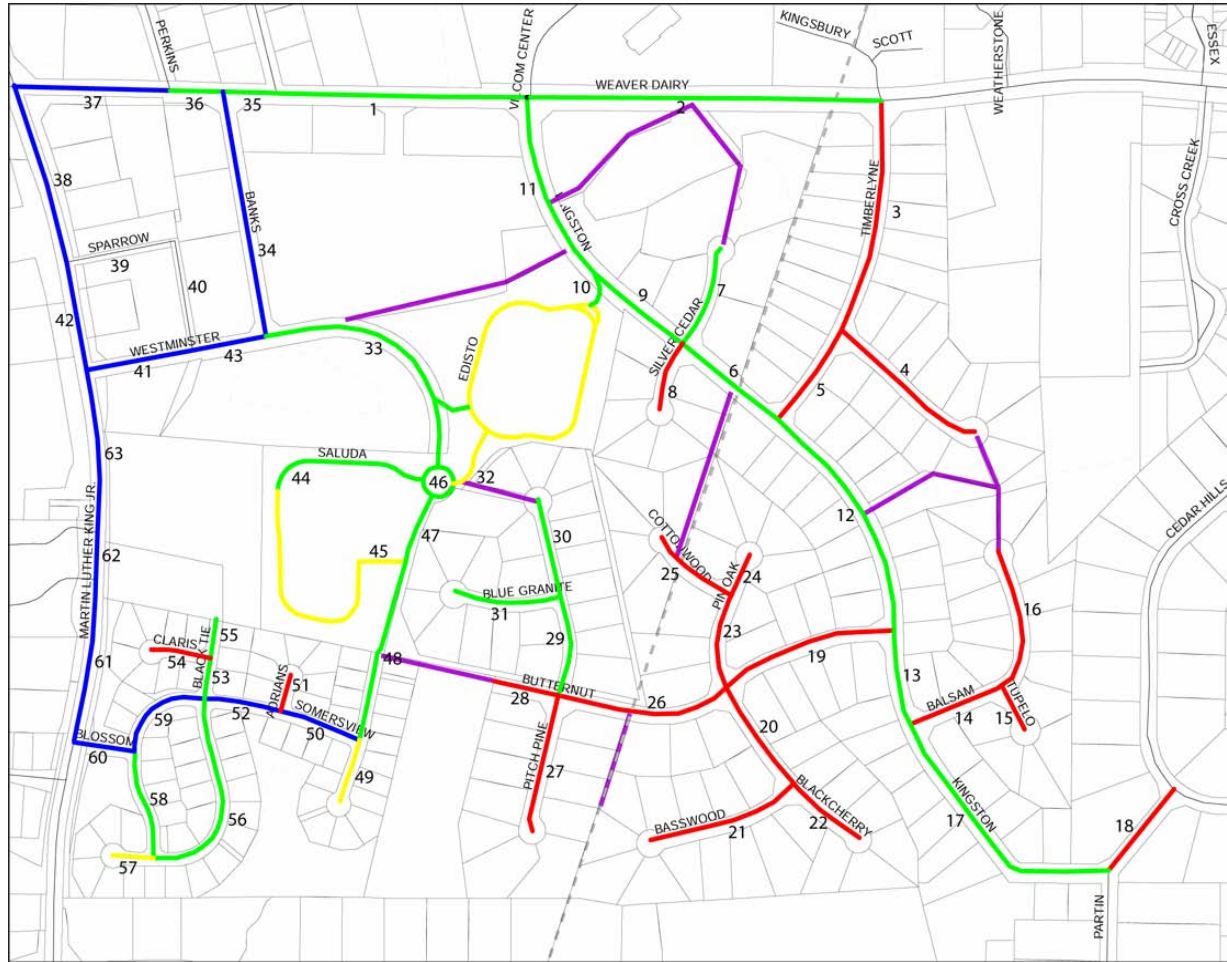
ALTERNATIVE B

SECTION
If the median can be constructed at least twenty feet wide, the NCDOT minimum clearance from the base of curb to the top of a road sign is 14 feet for this roadway. Using a typical median curb and gutter width of 18 inches, the minimum width for a median sign post base is 11.8 feet, equivalent to the median width of road signs. This dimension, however, should be increased whenever additional posts.

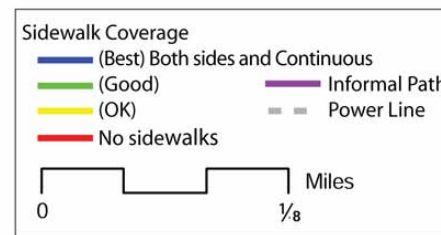
PLANTING STRIP

The median should be constructed at least twenty feet wide, the NCDOT minimum clearance from the base of curb to the top of a road sign is 14 feet for this roadway. Using a typical median curb and gutter width of 18 inches, the minimum width for a median sign post base is 11.8 feet, equivalent to the median width of road signs. This dimension, however, should be increased whenever additional posts.

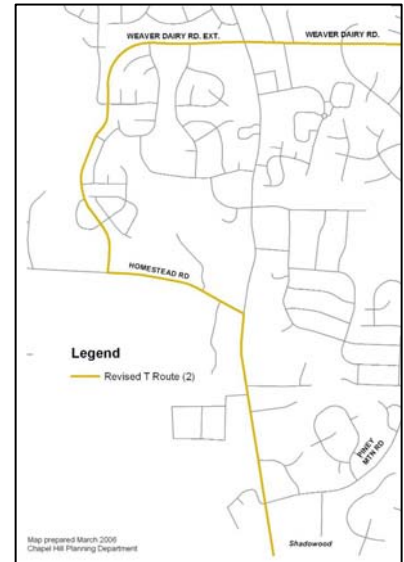
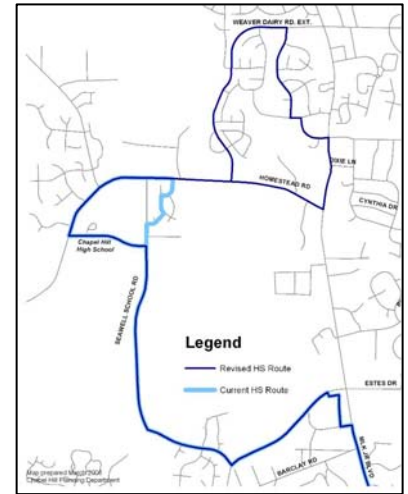
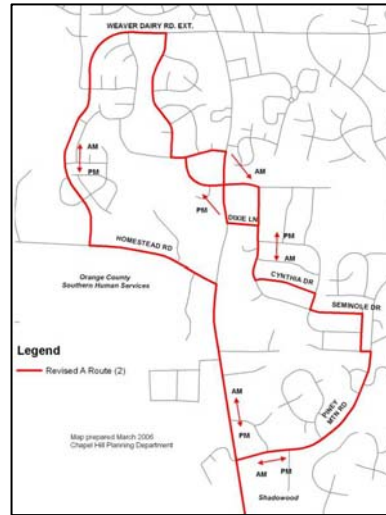
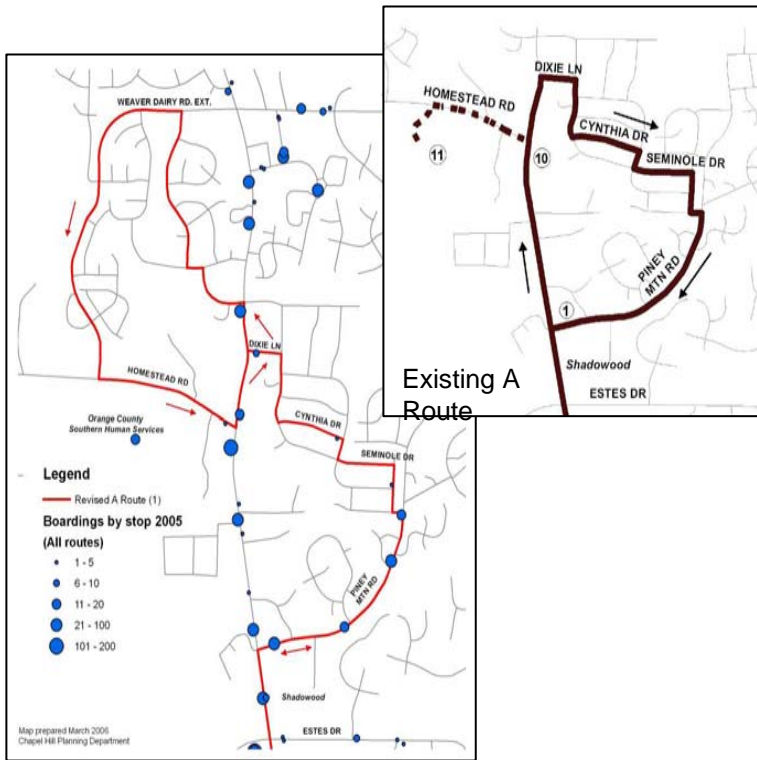
Timberlyne Community Mobility Assessment



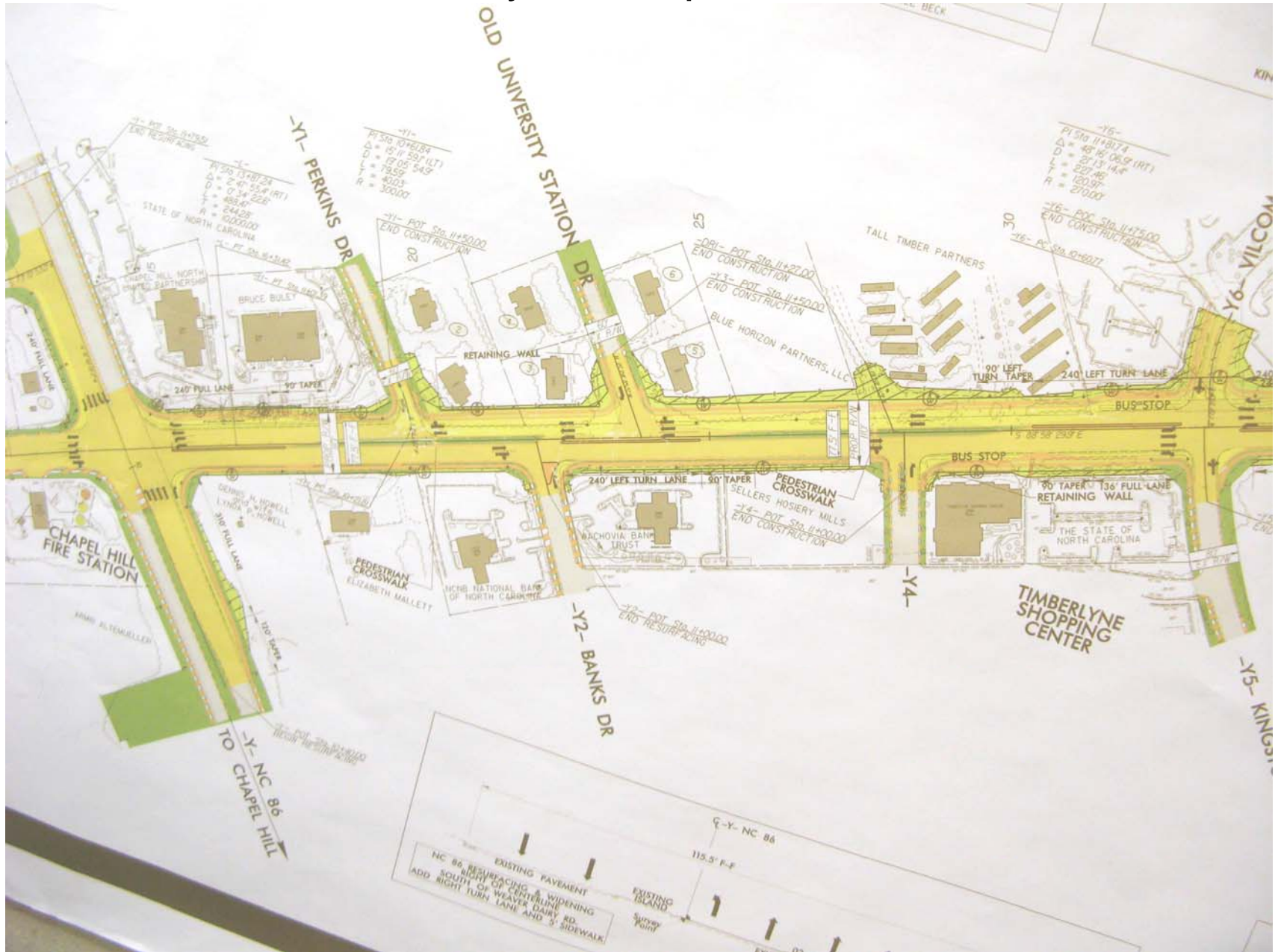
Timberlyne Pedestrian Mobility Audit Area Results
 Sidewalk Coverage Ratings
 February, 2007



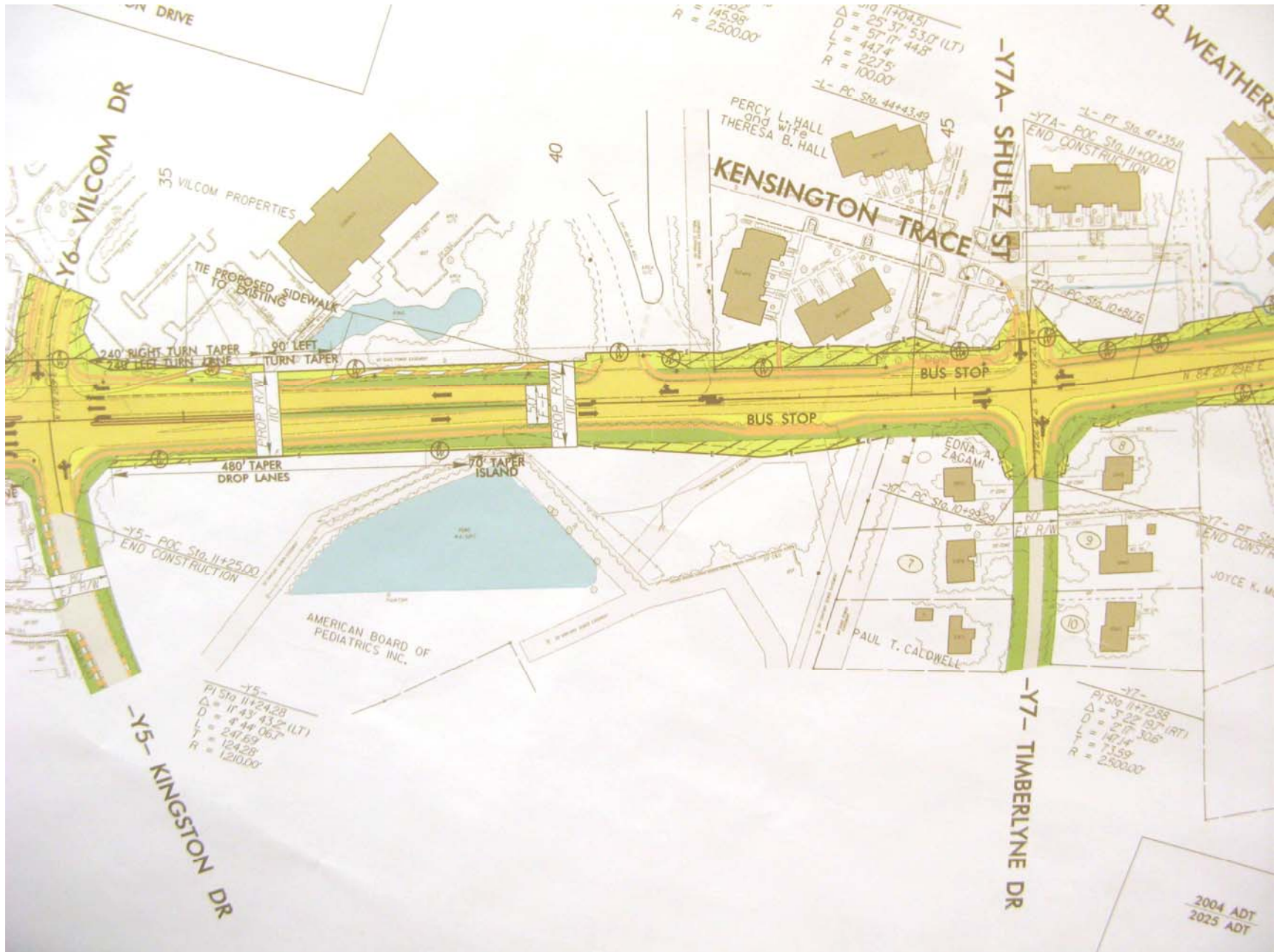
Weaver Dairy Ext. Transit Options



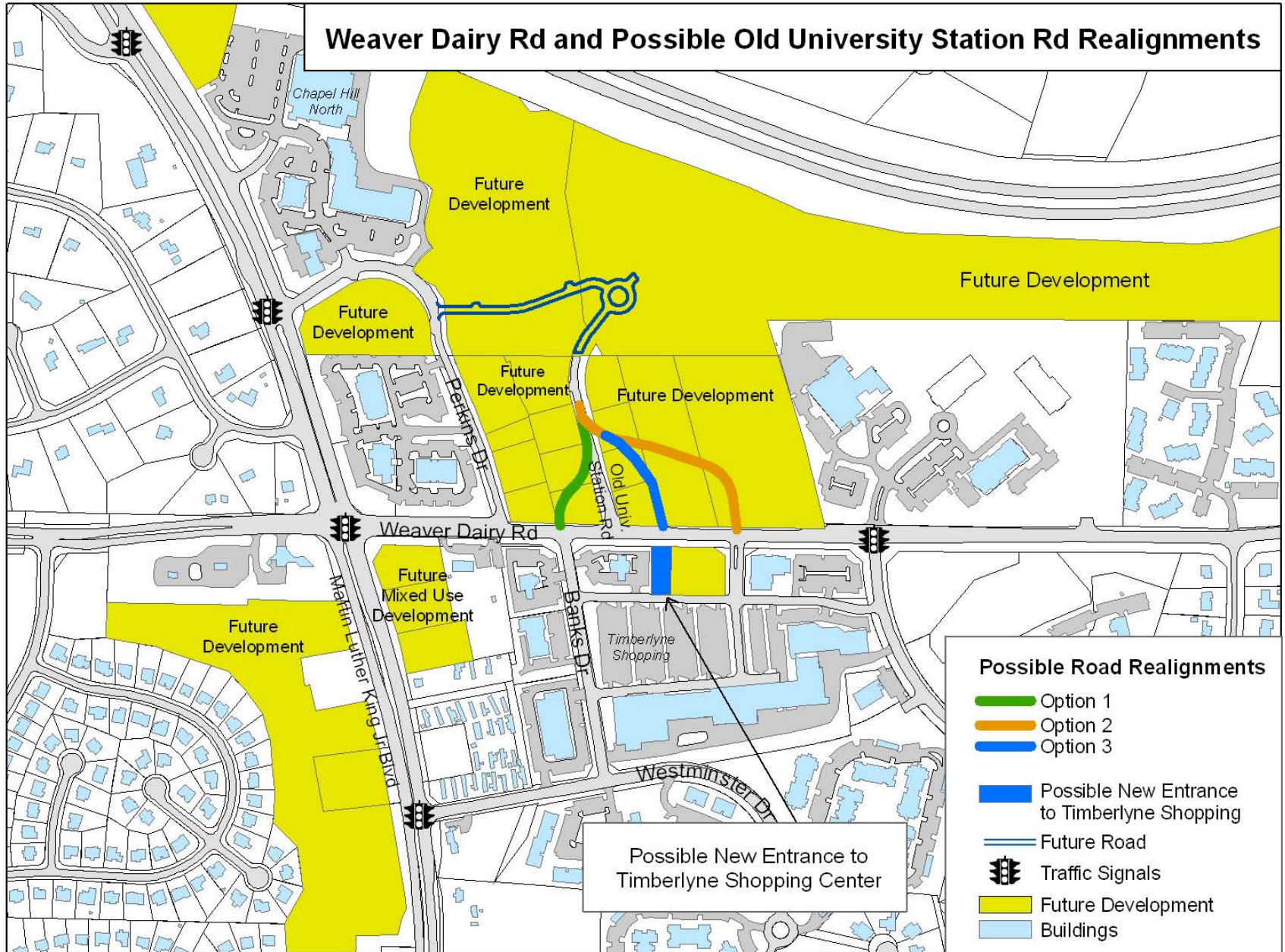
Weaver Dairy Rd. Improvements – 1



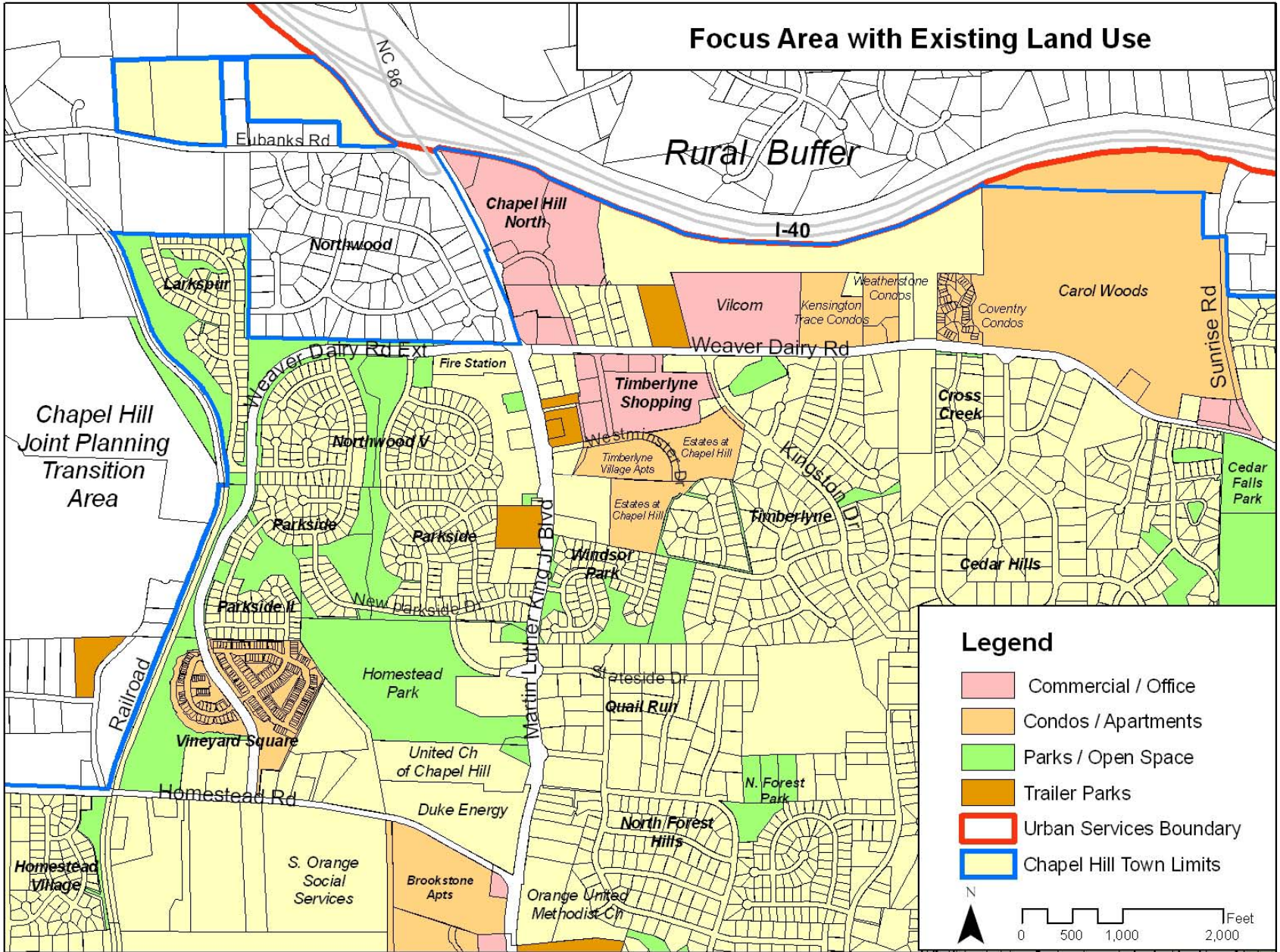
Weaver Dairy Rd. Improvements – 2



Weaver Dairy Rd and Possible Old University Station Rd Realignments



Focus Area with Existing Land Use



Legend

- Commercial / Office
- Condos / Apartments
- Parks / Open Space
- Trailer Parks
- Urban Services Boundary
- Chapel Hill Town Limits

