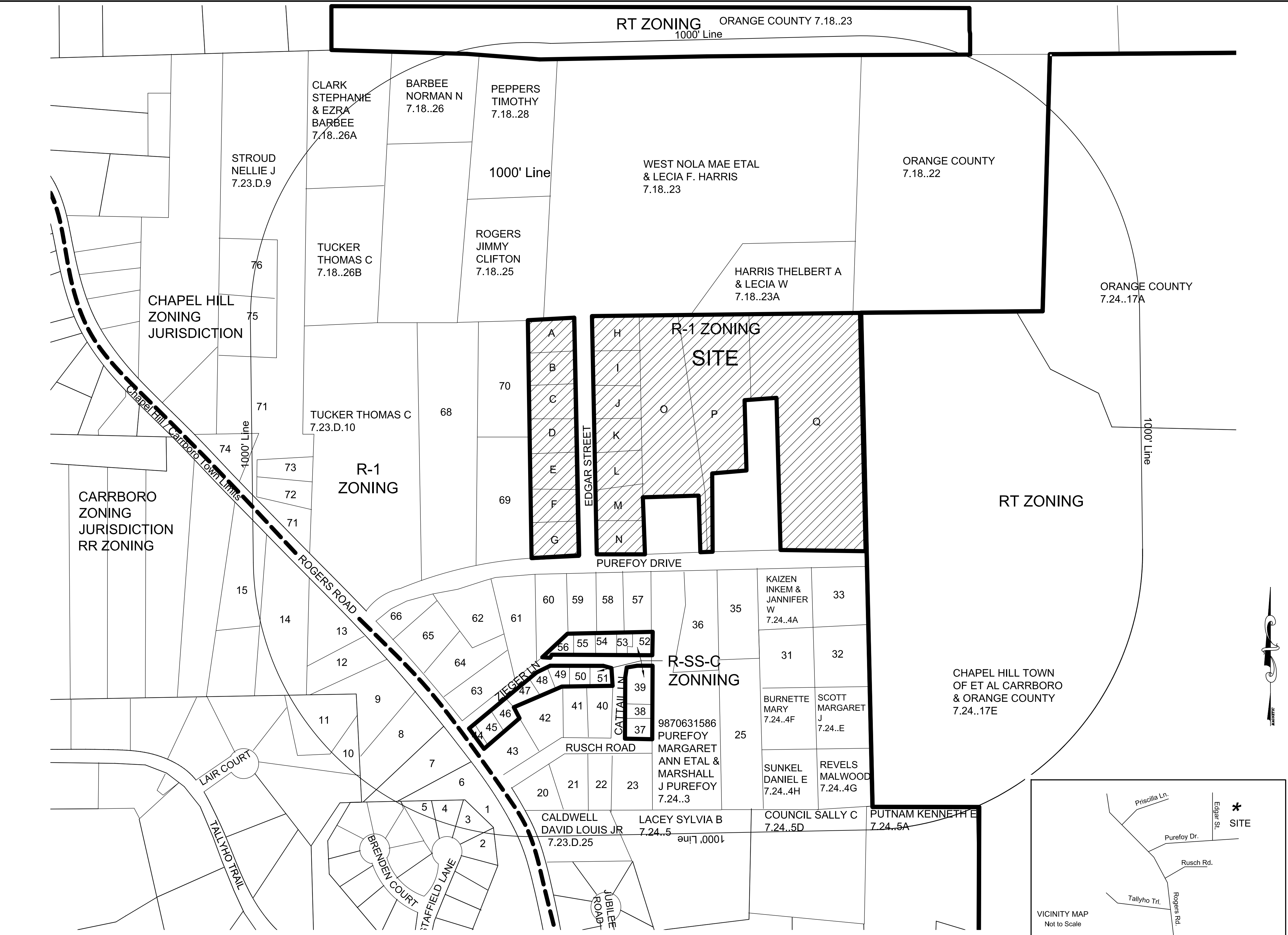


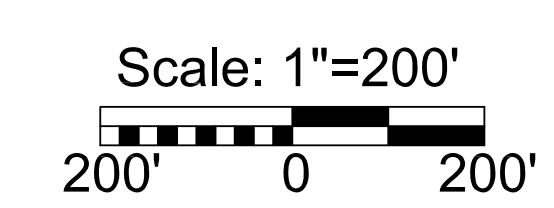
PUREFOY PARCEL INFO - 1000FT VICINITY		
#	OWNER	TBML
1	HIGHLANDS NORTH HOME OWNERS & ASSOCIATION	7.23F..40
2	JOHNSTON SUSAN ELIZABETH & GLORIA MARIE FALEY	7.23F..25
3	HEFFELFINGER RANDALL KENNETH & MELINDA KAY MCMASTER (W)	7.23F..26
4	LANNANTUONO MARIO & TRACY A	7.23F..27
5	ZURLIENE TIMOTHY J & GINGER J	7.23F..28
6	DE LIMA JORGE L & MARY J	7.23.C.24B
7	TUCKER BRUCE D	7.23.C.24A
8	ABUNDANT LIFE CENTER OF CHAPEL HILL INC	7.23.C.24C
9	FAITH TABERNACLE OASIS OF LOVE CHURCH INTERNATIONAL INC	7.23.C.24
10	DAY ROBERT P J	7.23C..18
11	FAITH TABERNACLE OASIS OF LOVE CHURCH INTERNATIONAL INC	7.23.C.27
12	FAITH TABERNACLE OASIS OF LOVE CHURCH INTERNATIONAL INC	7.23.C.23
13	FAITH TABERNACLE OASIS OF LOVE CHURCH INTERNATIONAL INC	7.23.C.22
14	ROGERS LEAH	7.23.C.20
15	ROGERS SAMUEL F & BETTIE D	7.23.C.19A
16	PUTNAM KENNETH E	7.24..5A
17	COUNCIL SALLY C	7.24..5D
18	LACEY SYLVIA B	7.24..5
19	CALDWELL DAVID LOUIS JR	7.23.D.25
20	PEPPERS TIMOTHY	7.23.D.24
21	BALDWIN DORTHY R	7.23.D.23
22	CALDWELL DANNY E	7.23.D.22
23	CALDWELL LARRY T	7.23.D.21
24	PUREFOY MARGARET ANN ETAL & MARSHALL J PUREFOY	7.24..23
25	PUREFOY CARL LEE	7.24..3C
26	SUNKEL DANIEL E	7.24..4H
27	REVELS MALWOOD	7.24..4G
28	CHAPPEL HILL TOWN OF ETAL CARRBORO & ORANGE COUNTY	7.24..17E
29	SCOTT MARGARET J	7.24..E
30	BURNETTE MARY	7.24..4F
31	BRADSHAW JOSEPH ZEPHANIAH & JANNIE MCL	7.24..D
32	REID LARRY DARNELL & KAREN MCD	7.24..4
33	REID LARRY DARNELL & KAREN MCD	7.24..4J
34	KAIZEN INKEM & JANNIFER W	7.24..4A
35	PUREFOY CARL LEE	7.24..3A
36	PUREFOY MARGARET	7.24..3B
37	HABITAT FOR HUMANITY ORANGE COUNTY INC	7.23.D.14H
38	FLORES JOSE A LOPEZ & MARGARITA C PATINO	7.23.D.14G
39	RUSCH HOLLOW HOME OWNERS ASSOCIATION % HABITAT	7.23.D.14P
40	WOODS TOPSY	7.23.D.19
41	BOOTH LEOLA B	7.23.D.18
42	HABITAT FOR HUMANITY ORANGE COUNTY INC	7.23.D.14S
43	WEAVER PRESTON JR	7.23.D.16
44	RUSCH HOLLOW HOME OWNERS ASSOCIATION % HABITAT	7.23.D.14P
45	NICKENS CAROLYN	7.23.D.14
46	ROBERSON JOANNETTA G	7.23.D.14A
47	HABITAT FOR HUMANITY ORANGE COUNTY INC	7.23.D.14B
48	BROWN MARSHALL	7.23.D.14C
49	PARSON LINDA	7.23.D.14D
50	ESPANA MARIA I JAUREGUI	7.23.D.14E
51	LI GUOYOU & GUIXIANG YU	7.23.D.14F
52	RAMOS EMILIO SANTOYO & MARIA G J JAUREGUI	7.23.D.14J
53	DURAN JUAN NUNEZ & ENRIQUETA JAMINEZ	7.23.D.14K
54	CHIQUITO JORGE ISLAS & ROSA MARIA HERNANDEZ	7.23.D.14L
55	GUITIERREZ ESPARZA SERGIO & EMMA HERRERDELGADO	7.23.D.14M
56	ROGERS CHARLES & BONNIE	7.23.D.14N
57	HABITAT FOR HUMANITY ORANGE COUNTY NC INC	7.24D.C.10
58	CAMPBELL ROBERT LEE & PATRICIA ANN	7.24D.C.9



59	NORWOOD DENEAN T	7.24.D.8
60	BALDWIN ALVIS JUNIOR & PANELLA B	7.24.D.7
61	JENKINS BETTYE EDWARDS	7.24.D.6
62	HOWARD NATHANIEL W & ROBIN M	7.24.D.5
63	FARRINGTON HARRIS E & KAREN	7.24.D.1
64	NEVILLE GAIL A	7.24.D.2
65	POOLE JACKIE E	7.24.D.3
66	FARRINGTON NATHANIEL JR & JACQULYNE B	7.24.D.4
67	TUCKER THOMAS C	7.23.D.10
68	TUCKER THOMAS C	7.23.D.11B
69	TUCKER THOMAS C	7.23.D.11A
70	TUCKER THOMAS C	7.23.D.11
71	STROUD NELLIE J	7.23.D.9
72	JONES PRISCILLA W BYRD	7.23.D.9C
73	STROUD JAMES RUFUS & NELLIE JONES STROUD	7.23.D.9B

74	NICKENS ALLONIOUS	7.23.C.18
75	REID LARRY D & KAREN M	7.23.D.9D
76	FARLEY PERCY JR & EDITH	7.23.D.9A
77	TUCKER THOMAS C	7.18..26B
78	CLARK STEPHANIE & EZRA BARBEE	7.18..26A
79	BARBEE NORMAN N	7.18..26
80	CLARK STEPHANIE & EZRA BARBEE	7.18..26C
81	ROGERS JIMMY CLIFTON	7.18..25
82	PEPPERS TIMOTHY	7.18..28
83	ORANGE COUNTY	7.18..1
84	WEST NOLA MAE ETAL & LECIA F HARRIS	7.18..23
85	HARRIS THELBERT A & LECIA W	7.18..23A
86	ORANGE COUNTY	7.18..22
87	ORANGE COUNTY	7.18..17A

SITE PARCEL INFO					
LET.	PARCEL ID	TBML	I	9870-54-9950	7.23.B.B.2
A	9870-55-7013	7.23.B.A.1	J	9870-54-9850	7.23.B.B.3
B	9870-54-7922	7.23.B.A.2	K	9870-54-9679	7.23.B.B.4
C	9870-54-7830	7.23.B.A.3	L	9870-54-9543	7.23.B.B.5
D	9870-54-7627	7.23.B.A.4	M	9870-54-9441	7.23.B.B.6
E	9870-54-7514	7.23.B.A.5	N	9870-54-9248	7.23.B.B.7
F	9870-54-7411	7.23.B.A.6	O	9870-64-1606	7.24..1
G	9870-54-7219	7.23.B.A.7	P	9870-64-3619	7.24..1C
H	9870-54-9063	7.23.B.B.1	Q	9870-64-6459	7.24..2



MICHAEL A. NEAL & ASSOCIATES, PLLC
ENGINEERS, SURVEYORS, and PLANNERS
105 WEST CORBIN ST.
SUITE 201
HILLSBOROUGH, NC 27278
(919) 644-1277
(919) 644-1347 FAX
mneal-mana@att.net

MICHAEL A. NEAL, P.E.
DATE:

Habitat for Humanity, Orange Co.
Purefoy Drive Subdivision
Chapel Hill, North Carolina

Area Map
Scale: 1"=200'

PRELIMINARY
Not for Construction

Area Map
Date: 10/26/2006
Revisions: 4/13/07
6/01/07
8/10/07

Drawn By TCL
Checked By MAN
Project No. 137

Sheet C1