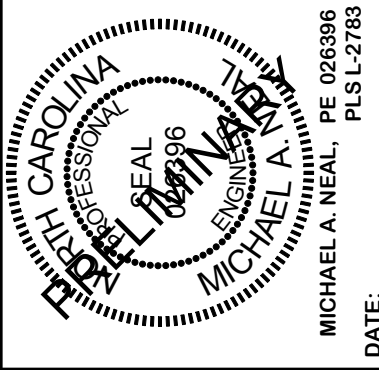


MICHAEL A. NEAL & ASSOCIATES, PLLC  
ENGINEERS, SURVEYORS, and PLANNERS  
105 WEST CORBIN ST.  
SUITE 201  
HILLSBOROUGH, NC 27278  
(919) 644-1277  
(919) 644-1347 FAX  
mneal-mana@trem.net



**Habitat for Humanity, Orange Co.**  
**Purefoy Drive Subdivision**  
**Chapel Hill, North Carolina**

**Site Plan**  
Scale: 1"=50'

**PRELIMINARY**  
Not for Construction

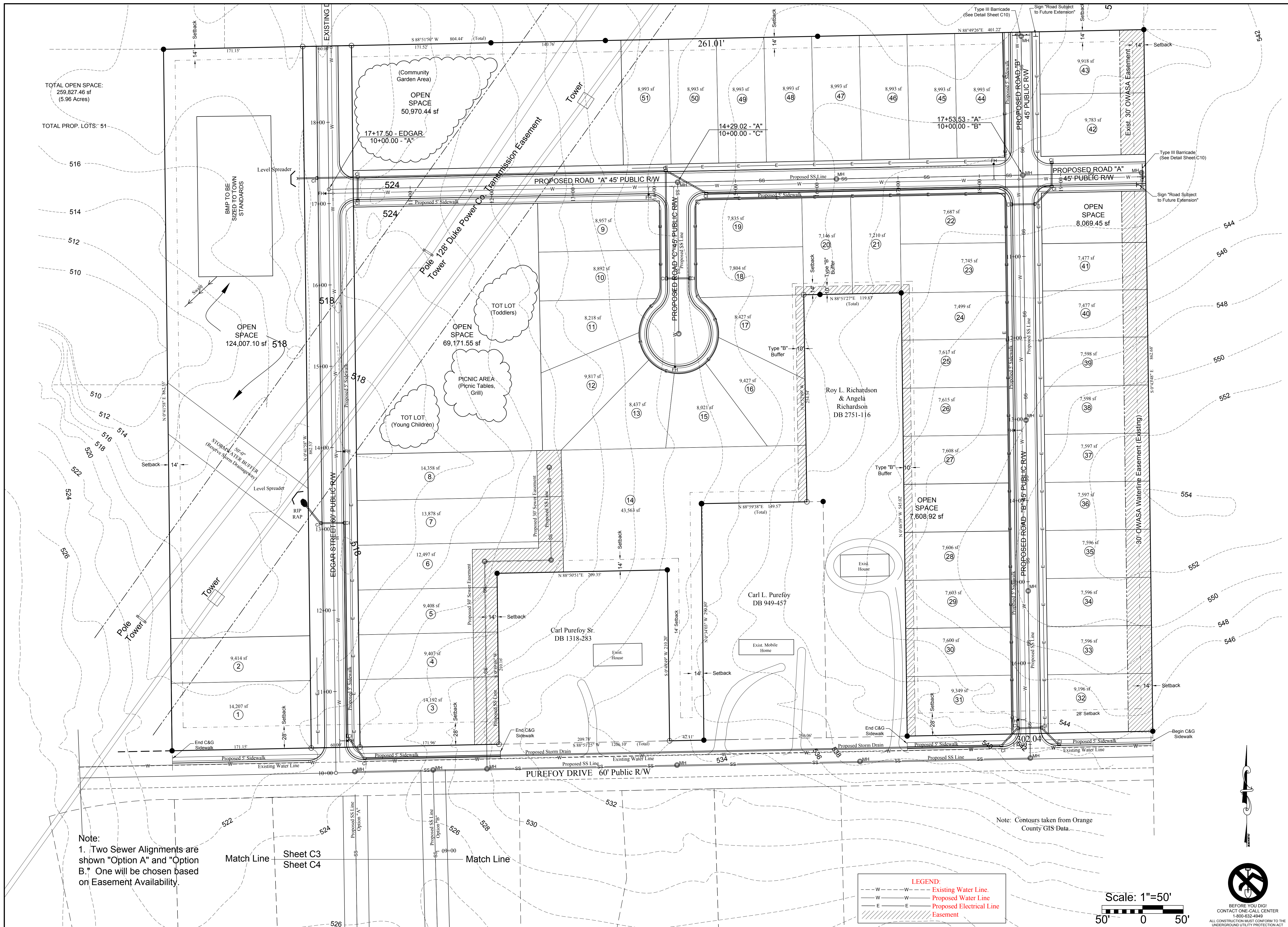
Plan & Profile  
Date: 10/26/2006  
Revisions: 4/13/07  
6/01/07  
8/10/07

Drawn By KSW  
Checked By MAN  
Project No. 137

Sheet **C3**

71

ATTACHMENT 16



TOTAL OPEN SPACE:  
259,827.46 sf  
(5.96 Acres)

TOTAL PROP. LOTS: 51

END TO BE  
BUILT TO MEET  
SETBACK  
STANDARDS

OPEN SPACE  
124,007.10 sf

(Community  
Garden Area)

OPEN  
SPACE  
50,970.44 sf

17+17.50 - EDGAR  
10+00.00 - "A"

OPEN SPACE  
69,171.55 sf

PICNIC AREA  
(Picnic Tables,  
Grill)

TOT LOT  
(Young Children)

Carl Purefoy Sr.  
DB 1318-283

Carl L. Purefoy  
DB 949-457

Roy L. Richardson  
& Angela  
Richardson  
DB 2751-116

OPEN SPACE  
7,608.92 sf

OPEN SPACE  
8,069.45 sf

OPEN SPACE  
7,477 sf

OPEN SPACE  
7,598 sf

OPEN SPACE  
7,597 sf

OPEN SPACE  
7,596 sf

OPEN SPACE  
9,196 sf

Note:  
1. Two Sewer Alignments are  
shown "Option A" and "Option  
B." One will be chosen based  
on Easement Availability.

Match Line

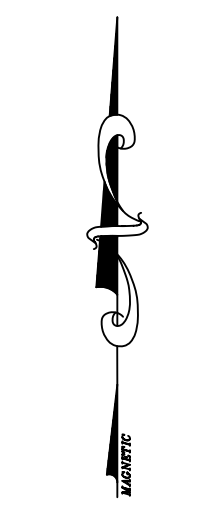
Sheet C3  
Sheet C4

Match Line

**LEGEND:**

- - - - -	Existing Water Line
- - - - -	Proposed Water Line
- - - - -	Proposed Electrical Line
//////	Easement

Scale: 1"=50'



BEFORE YOU DIG!  
CONTACT ONE-CALL CENTER  
1-800-632-4949  
ALL CONSTRUCTION MUST CONFORM TO THE  
UNDERGROUND UTILITY PROTECTION ACT

THESE DRAWINGS AND ACCOMPANYING SPECIFICATIONS ARE INSTRUMENTS OF SERVICE, AND AS SUCH SHALL REMAIN THE PROPERTY OF THE ENGINEER AND/OR SURVEYOR. THESE DRAWINGS HAVE BEEN PREPARED FOR A SPECIFIC PROJECT AND SHALL NOT BE USED IN CONNECTION WITH ANY OTHER PROJECT WITHOUT PRIOR WRITTEN PERMISSION OF THE ENGINEER AND/OR SURVEYOR. MICHAEL A. NEAL, PLS, PE (MICHAEL A. NEAL & ASSOCIATES, PLLC)