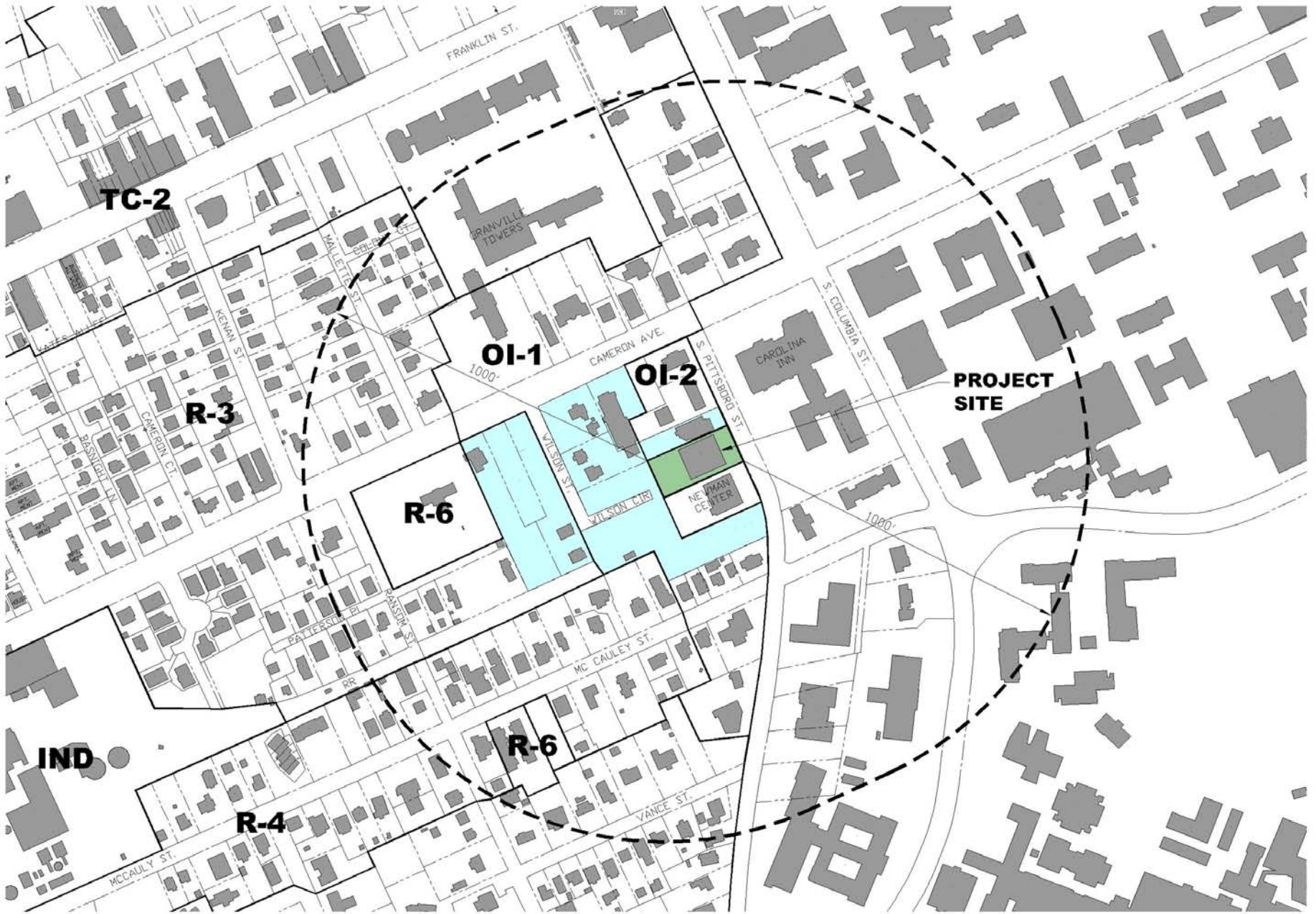


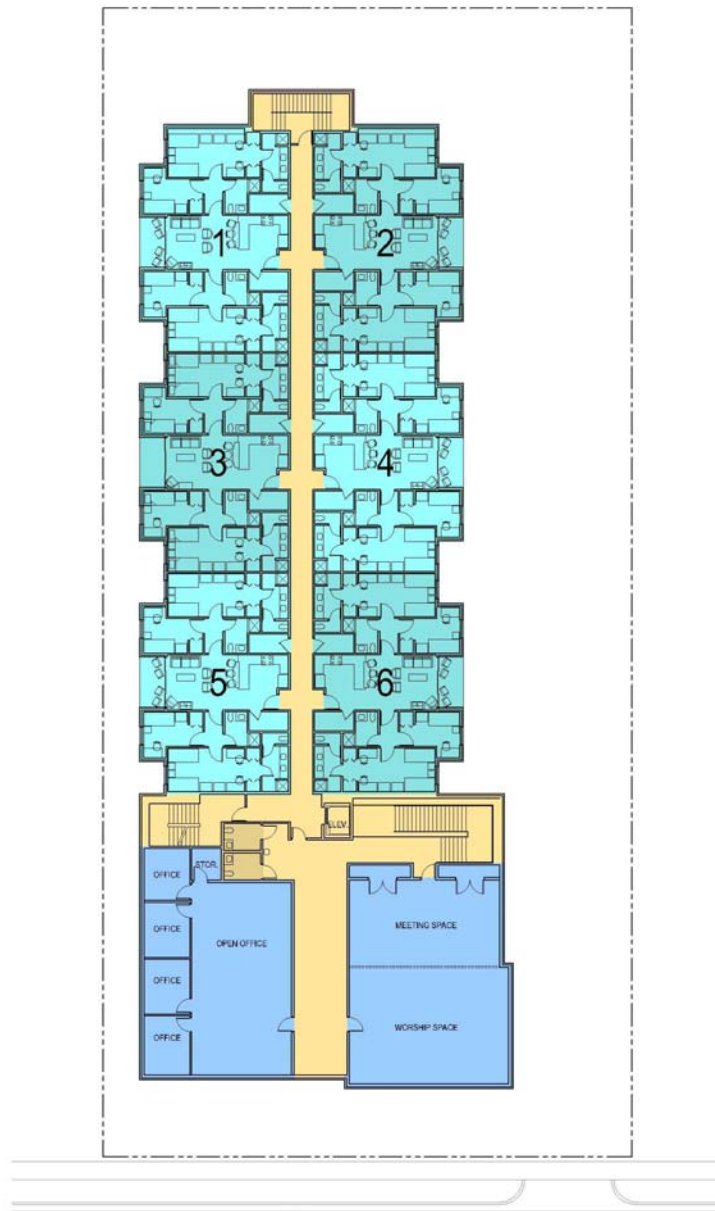


Chapel Hill Town Council
Concept Plan Presentation
for the
UNC Wesley Foundation
Chapel Hill, North Carolina
March 10, 2008

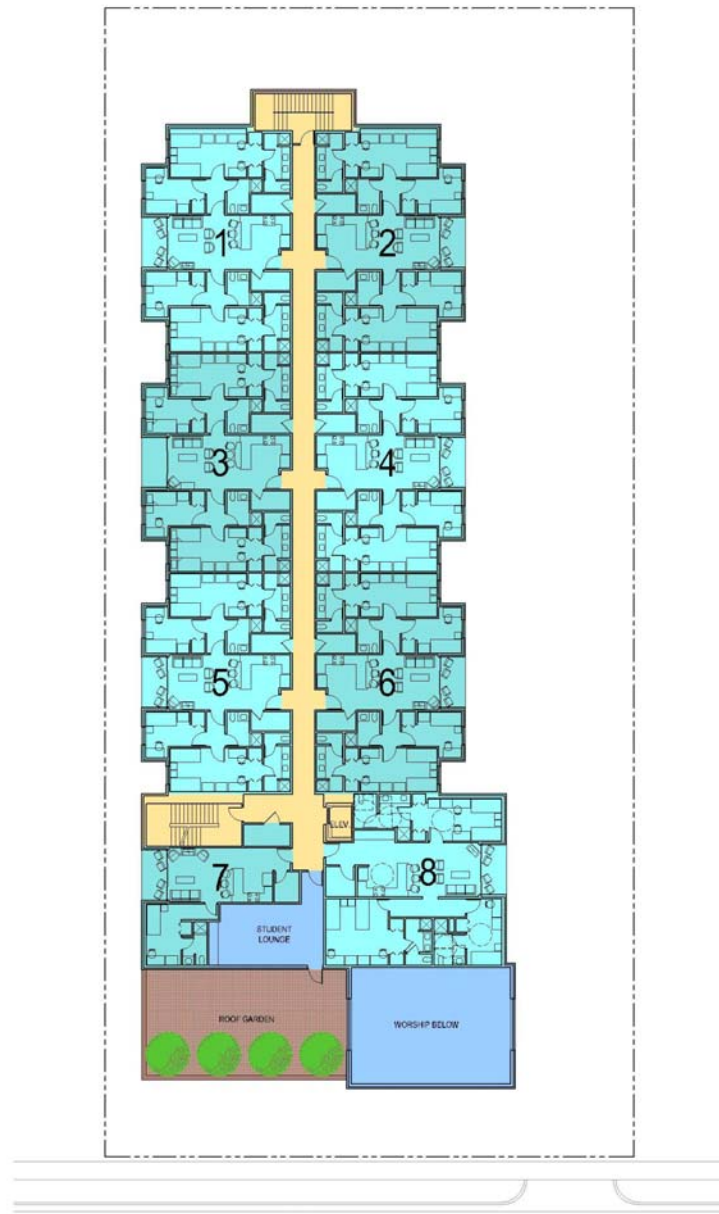




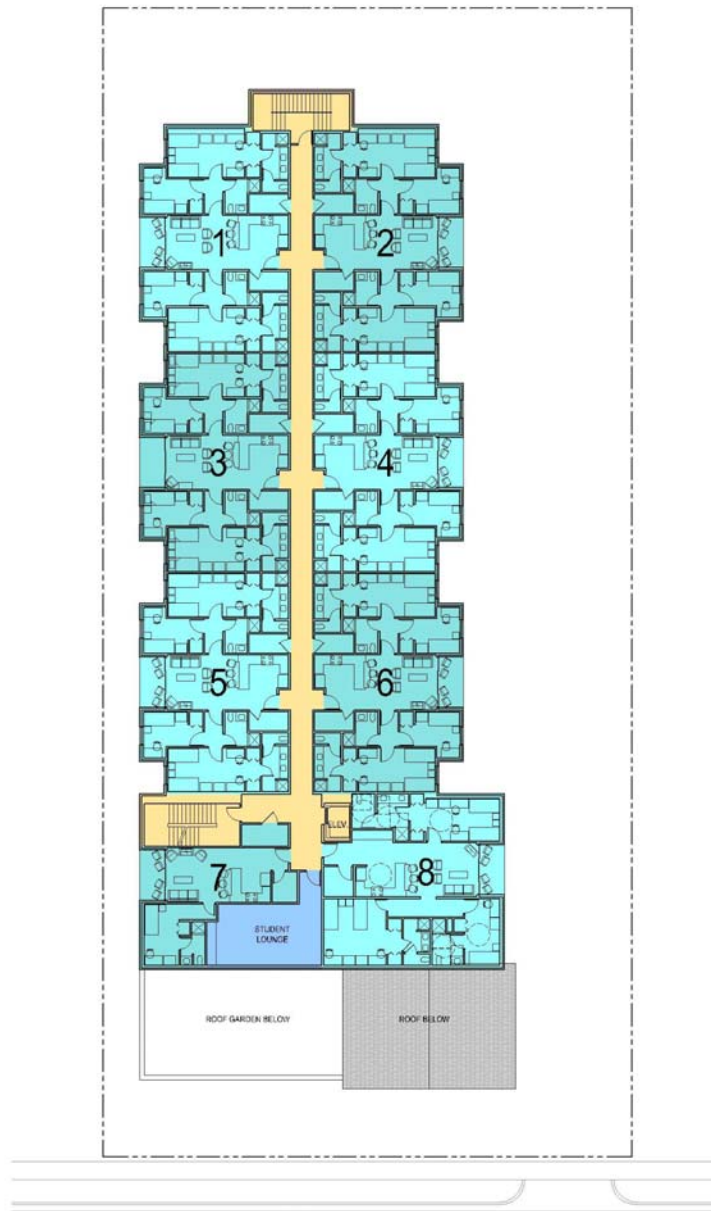




SECOND FLOOR

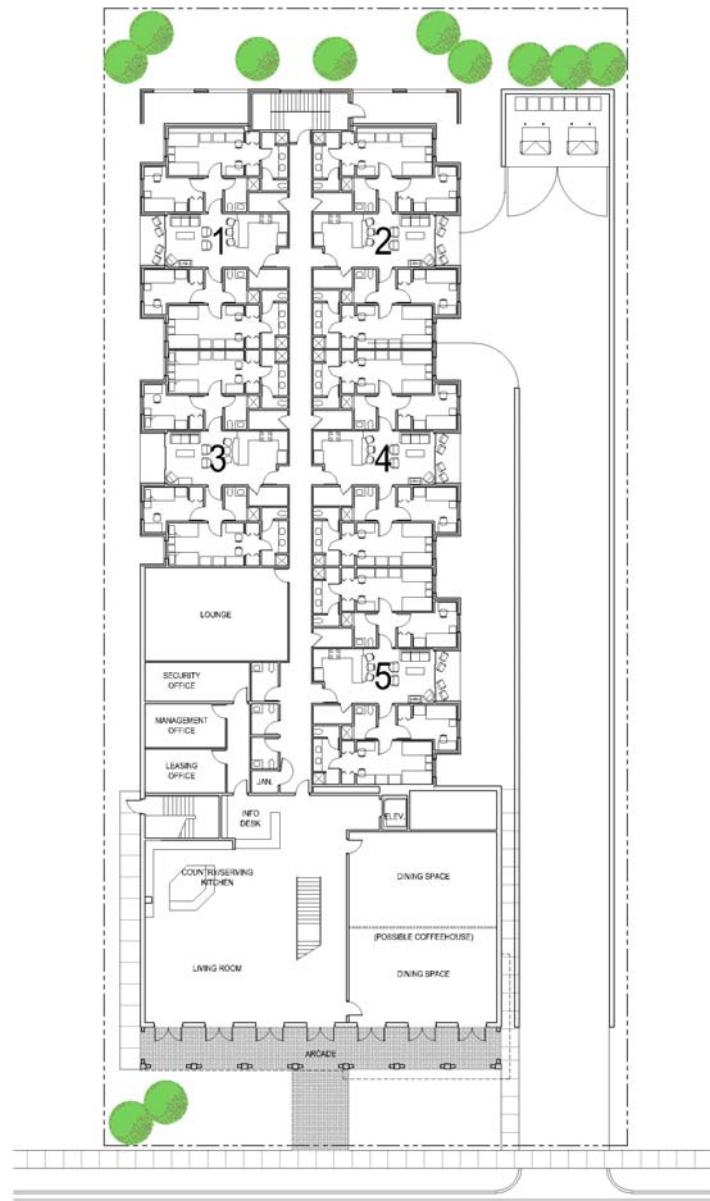


THIRD FLOOR

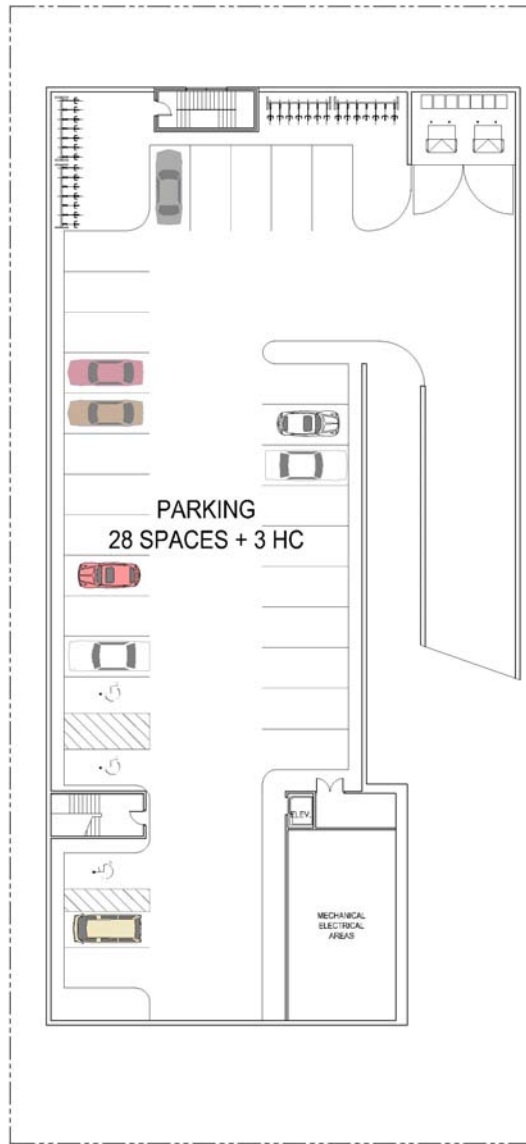




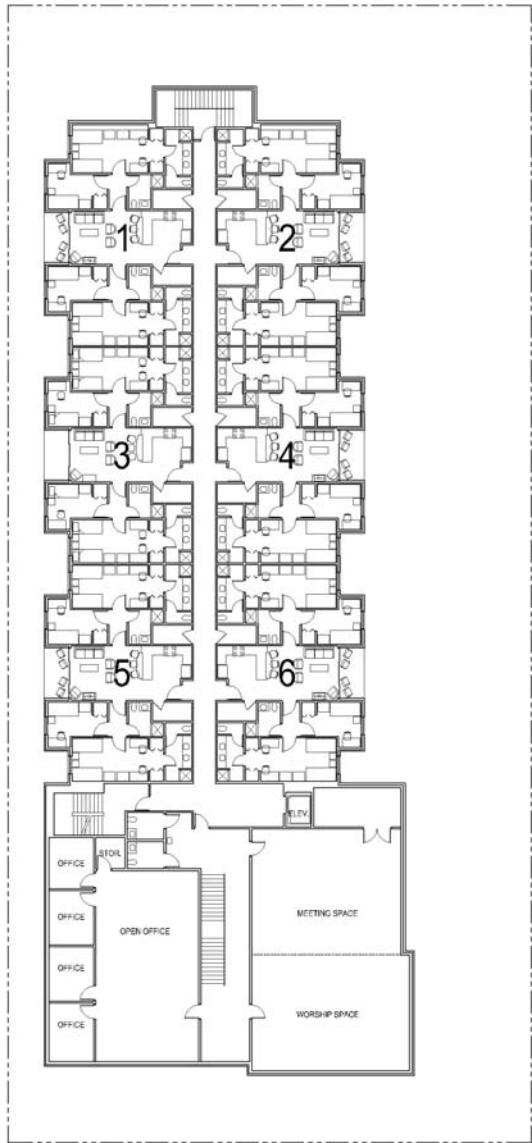




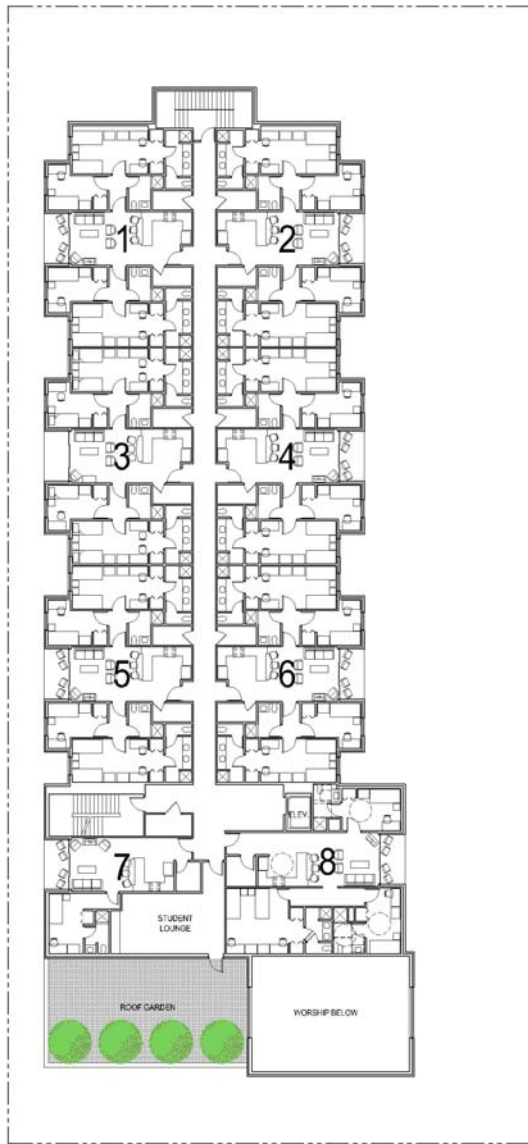
FIRST FLOOR



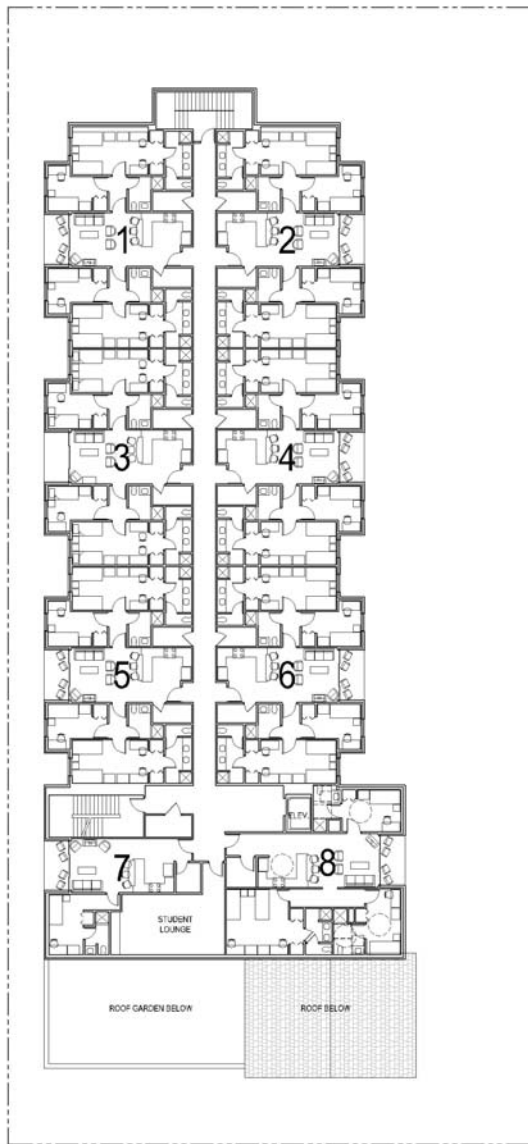
BASEMENT



SECOND FLOOR



THIRD FLOOR



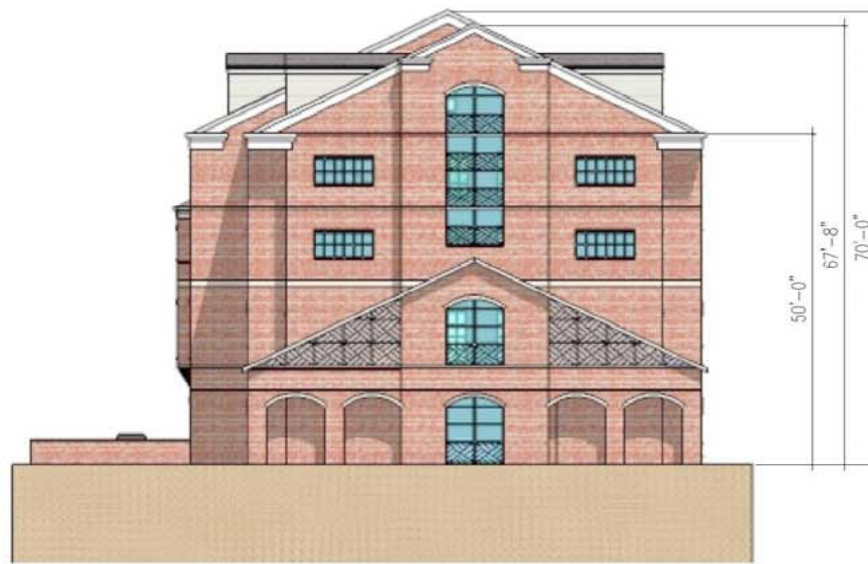
FOURTH FLOOR



East Elevation



South Elevation



West Elevation



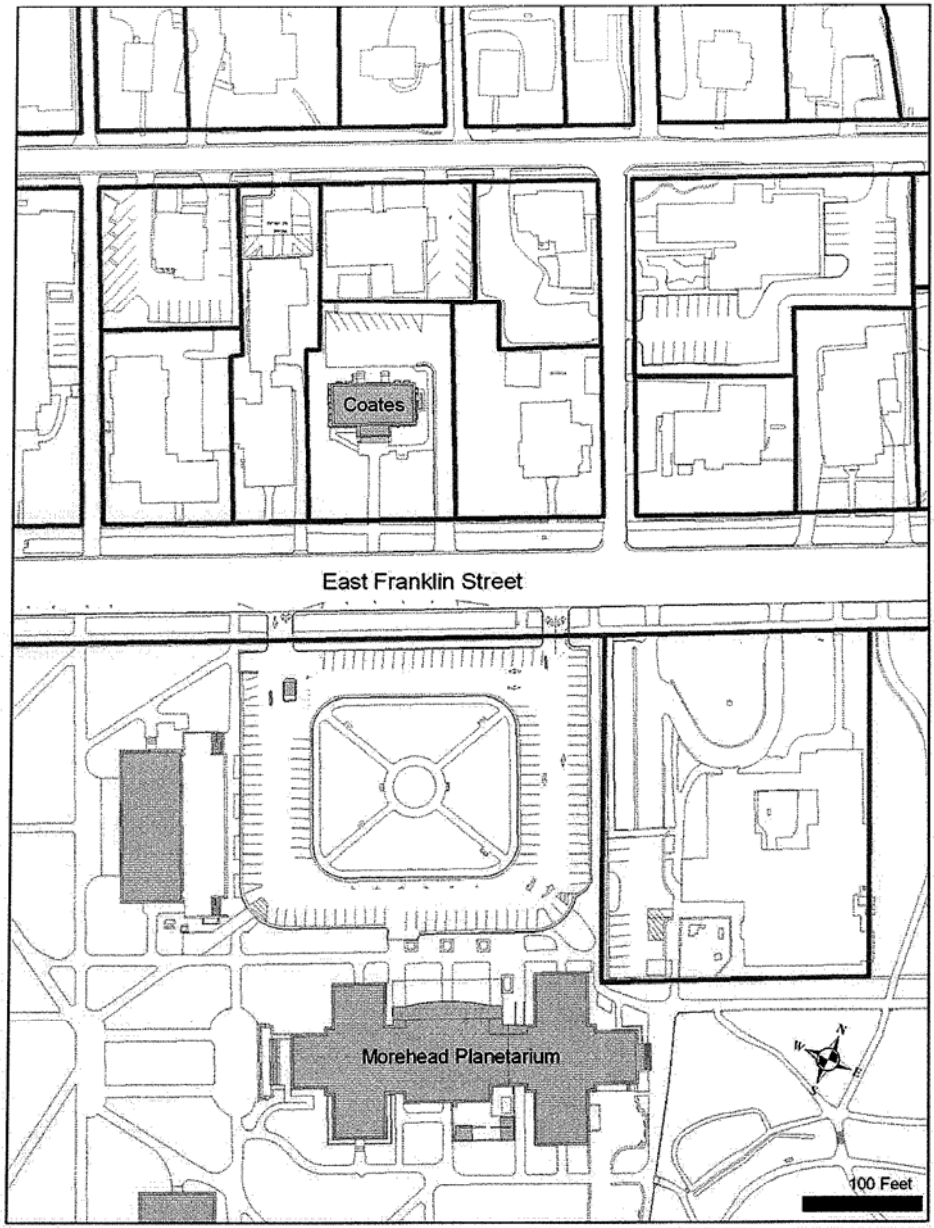
North Elevation

Building Elevations

February 15, 2008







223 East Franklin Street Area Map

UNC Wesley Foundation
Comparative Study of Building Heights
 February 15, 2008

	Number of Stories	Eave/Parapet Height	Roof Ridge Height	Top of Chimney or Penthouse Height
Carolina Inn	2 + dormer	25'-6"	45'-6"	56'-0"
Global Education Center	3 + penthouse	48'-0"	N. A.	75'-0"
Typical Fraternity House	2 + dormer	24'-0"	40'-0"	44'-0"
The Arts Common	3	60'-0"	72'-6"	N. A.
Granville Towers (East, West and South Towers)	9 + penthouse	89'-0"	N. A.	104'-0"
Morehead Planetarium	3 + domes	54'-0"	69'-0"	94'-0"
McCorkle Place Condominiums	3 + dormers	38'-0"	50'-0"	58'-0"
Kappa Delta House (219 E. Franklin Street)	2	21'-0"	31'-0"	34'-0"
Lambda Chi Alpha House (227 E. Franklin Street)	2	20'-0"	29'-0"	32'-0"
Coates Building (223 E. Franklin Street)	2	25'-0"	37'-0"	40'-0"
UNC Wesley Foundation (presented to CHHDC, 12/13/07)	5	62'-0"	82'-0"	N. A.
UNC Wesley Foundation (presented to CHTC, 3/10/08)	4	50'-0"	70'-0"	N. A.

The building heights shown are estimates based on photographs and field measurements.



