



The Carolina North Forest Active Management Program

Prepared for the Carolina North Public Information Session

March 4, 2009

Program Goals

- *UNC News Release, December 14, 2006*
 - The active management program is “a proactive move by the University to maintain and enhance areas of the tract.”
 - “To benefit local residents and demonstrate the university's commitment to sustainability at Carolina North.”



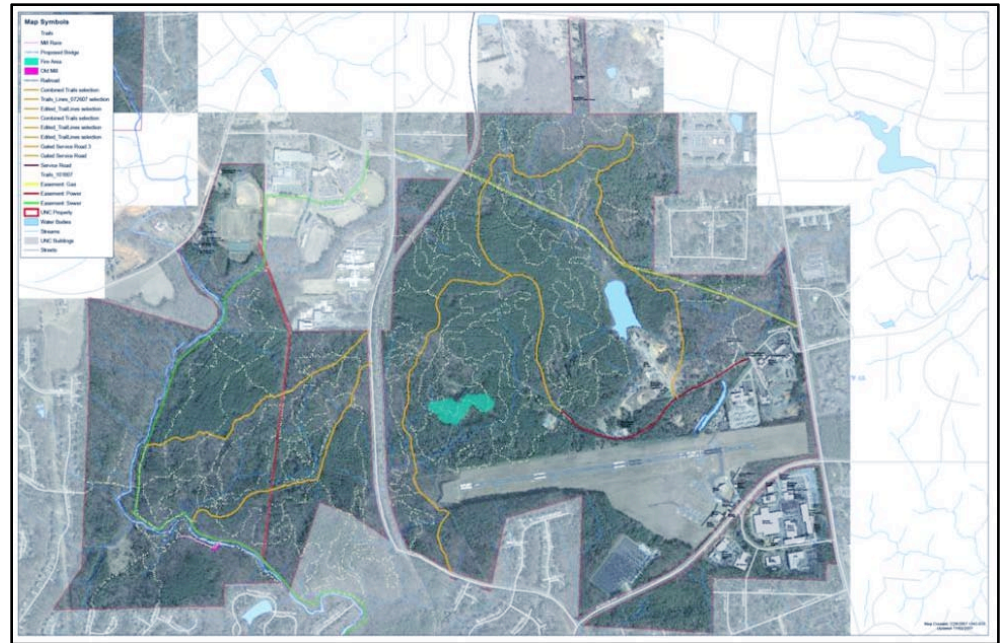
UNC Media Relations, Fall 2007

Program & Operational Goals

- Forest Recreation Management
 - Provide and enhance opportunities for recreational and leisure activities.
- Forest Resource Management
 - Be excellent stewards of the landscape and promote the health of the Forest.
- Forest Learning Environment
 - Facilitate research and educational opportunities in the Forest learning laboratory

Forest Recreation

- Inventory, Maintain and Evaluate Existing Trail System
 - Verify boundaries
 - Provide maps and information
 - Develop ‘sustainable’ trails



*Forest map showing trail networks & loops, Fall 2007
UNC Engineering & Information Services*

Forest Recreation

- Designate access points
 - Provide signage
 - Road view signs
 - User guidelines
 - Provide access
 - Trailheads
 - Site Fixtures
 - Gates with stone columns
 - Kiosks with maps
 - Sanitation stations



Seawell School Rd. Entrance 3

Forest Recreation: Developing Relationships

- Interact with various Forest user groups
 - Individuals
 - Bikers
 - Runners
 - Dog walkers
 - Birdwatchers
 - Groups
 - Triangle Off Road Cyclists
 - The TrailHeads
 - Friends of Bolin Creek
 - seejanerun
 - The Pacers
 - Trips for Kids-Triangle



'seejanerun' makes a donation to trail maintenance, Fall 2008

Forest Recreation: Developing Relationships

- Provide information about the active management program at Carolina North
- Provide other resources
 - Volunteer opportunities
 - Event hosting
 - Firewood



Volunteer workday, Spring 2008

Forest Resource Management

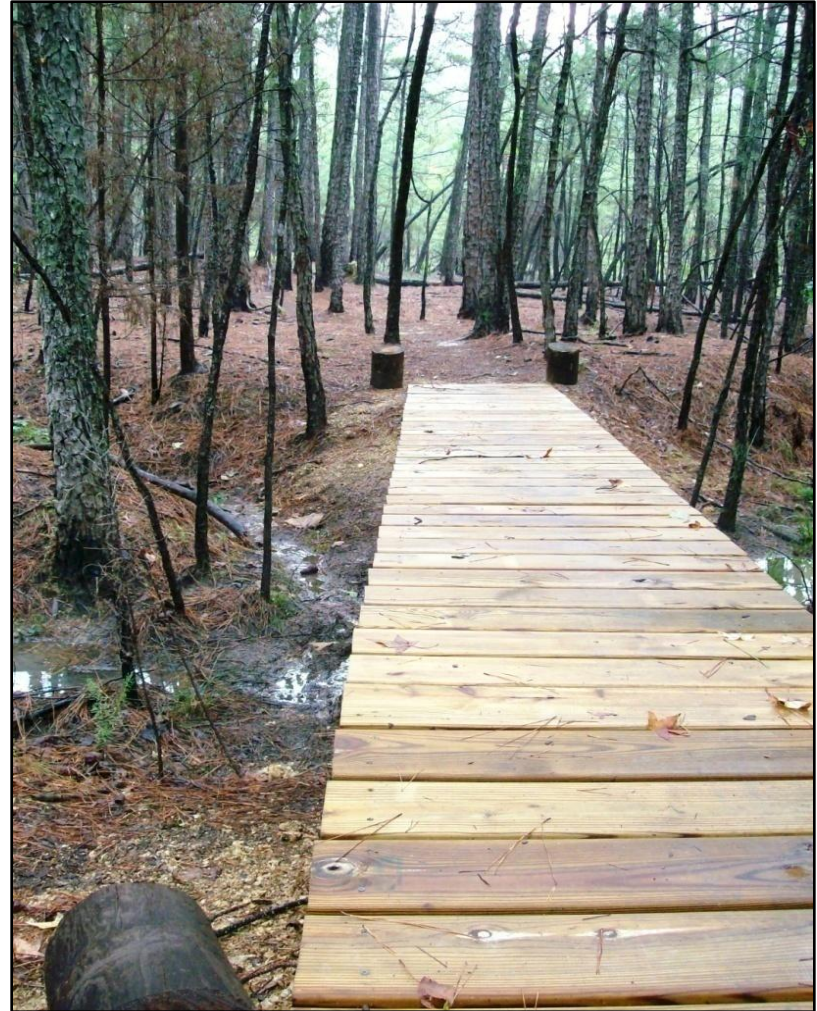
- Forest Inventory
 - Collect data using GIS & GPS systems
- Silviculture
 - Promote Forest productivity
- Fire Control
- Insect and Disease Detection
 - Southern Pine beetle
 - Engraver beetle



Fire damage, Summer 2007

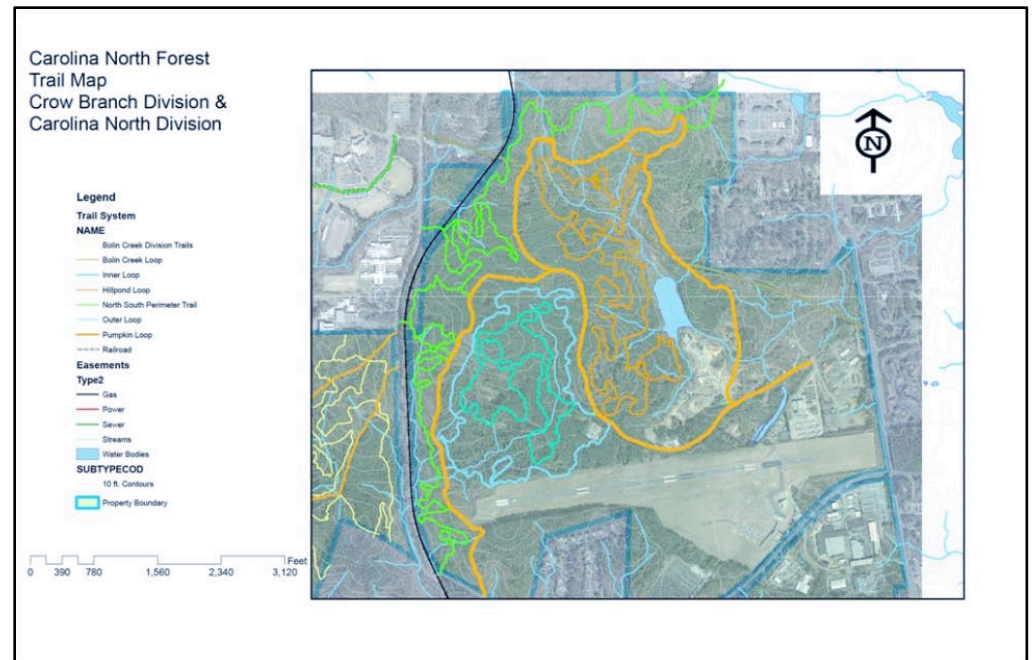
Forest Resource Management

- Control of invasive species
 - Flora and fauna
- Preserve and enhance water quality
 - Erosion control
 - Stormwater monitoring
 - Stream protection & restoration
- Road maintenance



A Forest Learning Laboratory

- Provide opportunities for research for faculty and students
- Develop mutually beneficial relationships with other University land managers and academic groups



Revised trail map, Winter 2008

A Forest Learning Laboratory

- Investigate Forest flora and fauna
 - Wildlife sightings
 - Poaching?
 - Rare and/or native plants



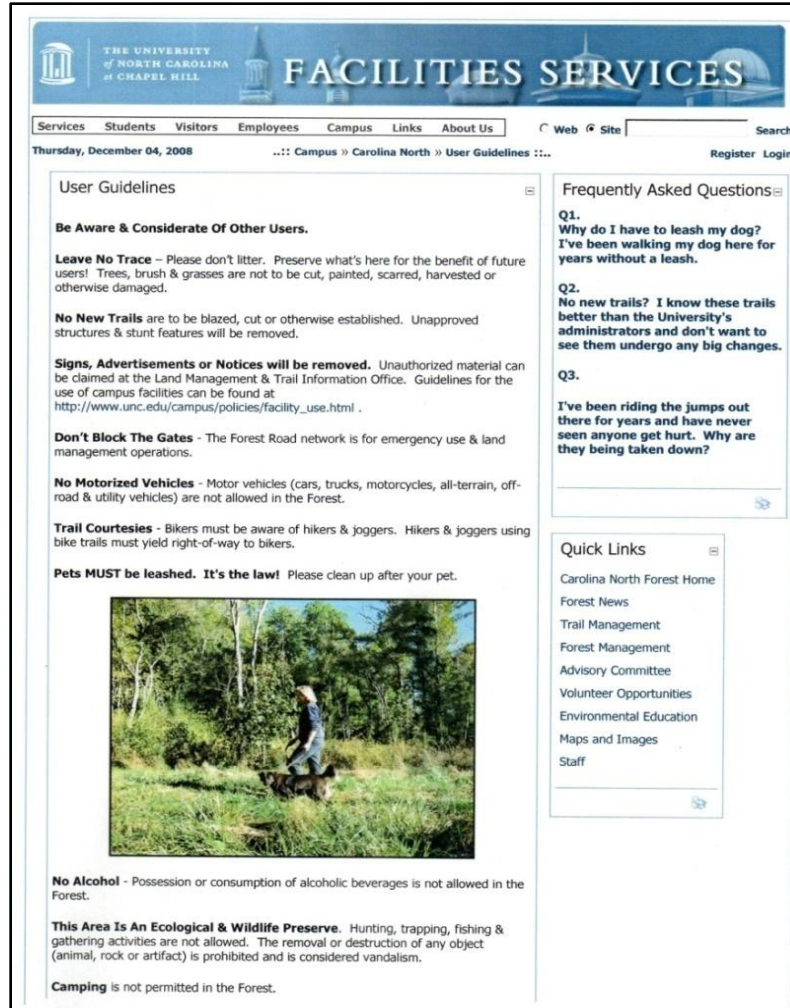
Piebald deer

Program Milestones

- Operational Areas and Equipment Acquired, Summer 2007
- Forest Manager & Technician Hired, Fall 2007
- MOU with Triangle Off Road Cyclists (TORC) Signed, Summer 2007
- Forest & Trails Advisory Committee Convened, Fall 2007

www.fac.unc.edu/CarolinaNorth

- Carolina North Forest Website Launched, Winter 2008
 - Program information and details
 - Contact information and current trail conditions



The screenshot shows the 'User Guidelines' page of the Carolina North Forest website. The header includes the University of North Carolina logo and the title 'FACILITIES SERVICES'. The page is dated Thursday, December 04, 2008. The main content area is titled 'User Guidelines' and contains several sections of text with bold headings. A photograph of a person hiking with a dog is included. The right sidebar contains 'Frequently Asked Questions' and 'Quick Links'.

THE UNIVERSITY OF NORTH CAROLINA CHAPEL HILL **FACILITIES SERVICES**

Services Students Visitors Employees Campus Links About Us Web Site Search

Thursday, December 04, 2008 :: Campus » Carolina North » User Guidelines :: Register Login

User Guidelines

Be Aware & Considerate Of Other Users.

Leave No Trace – Please don't litter. Preserve what's here for the benefit of future users! Trees, brush & grasses are not to be cut, painted, scarred, harvested or otherwise damaged.

No New Trails are to be blazed, cut or otherwise established. Unapproved structures & stunt features will be removed.


Signs, Advertisements or Notices will be removed. Unauthorized material can be claimed at the Land Management & Trail Information Office. Guidelines for the use of campus facilities can be found at http://www.unc.edu/campus/policies/facility_use.html.

Don't Block The Gates - The Forest Road network is for emergency use & land management operations.

No Motorized Vehicles - Motor vehicles (cars, trucks, motorcycles, all-terrain, off-road & utility vehicles) are not allowed in the Forest.

Trail Courtesies - Bikers must be aware of hikers & joggers. Hikers & joggers using bike trails must yield right-of-way to bikers.

Pets MUST be leashed. It's the law! Please clean up after your pet.



No Alcohol - Possession or consumption of alcoholic beverages is not allowed in the Forest.

This Area Is An Ecological & Wildlife Preserve. Hunting, trapping, fishing & gathering activities are not allowed. The removal or destruction of any object (animal, rock or artifact) is prohibited and is considered vandalism.

Camping is not permitted in the Forest.

Frequently Asked Questions

Q1. Why do I have to leash my dog? I've been walking my dog here for years without a leash.

Q2. No new trails? I know these trails better than the University's administrators and don't want to see them undergo any big changes.

Q3. I've been riding the jumps out there for years and have never seen anyone get hurt. Why are they being taken down?

Quick Links

- Carolina North Forest Home
- Forest News
- Trail Management
- Forest Management
- Advisory Committee
- Volunteer Opportunities
- Environmental Education
- Maps and Images
- Staff

User Guidelines explained

Projects Underway

- Trail Evaluation & Maintenance
 - Master planning
 - Wayfinding
 - Mapping and mapmaking with GPS & GIS systems
 - Regular trail observation



Standard wayfinding device

Projects Underway

- Forest Road Maintenance
 - Facilitate daily operations and emergency response
 - Ensure positive drainage



Roadbed seeding project, Winter 2008

The Future

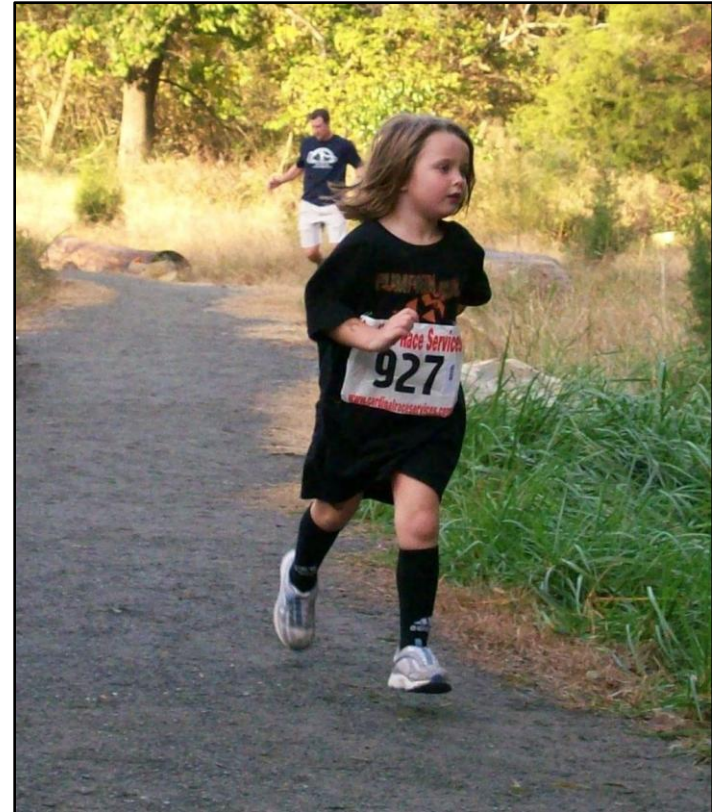
- Continue work with trail system
 - Plan
 - Refine
 - Sustain



*Nature walk with the Friends of Bolin Creek, Fall 2008
Image courtesy of Mr. David Otto*

The Future

- Continue promoting Forest recreation & learning opportunities
 - Informational tours
 - Public feedback meetings
 - Volunteer workdays
 - Event hosting
- Encourage positive public perception of the Carolina North satellite campus



Pumpkin Run, Fall 2008

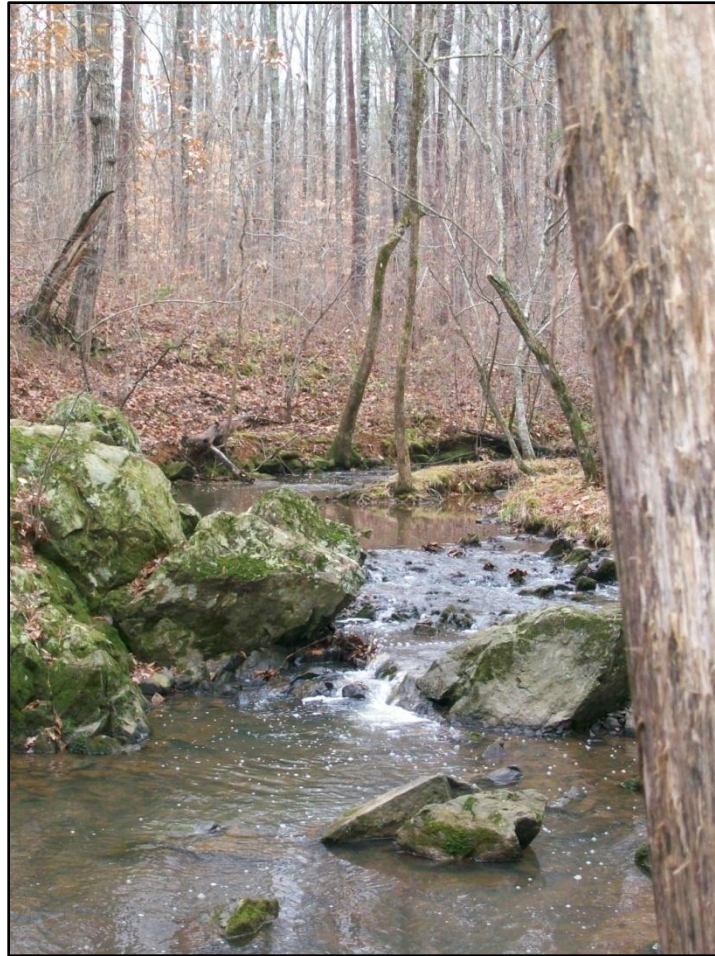
The Future

- Proactive sustainability
 - Collect native species for use in campus 'working landscapes'
 - Use Forest products and recyclable materials
 - Catalog the conditions of the environment on the tract



Roofing tiles from Venable Hall pitched to 'armor' a wet & muddy trail

Questions or Comments?



Large riffle complex, Bolin Creek