

| TREE TAG | SIZE | TYPE | REMARKS |
|----------|------|----------------------|------------------------------------------|
| 1-1 | 4" | WILLOW OAK | STREET TREE, UNDER POWER LINES |
| 1-2 | 12" | ATLANTIC WHITE CEDAR | CLOSE TO BURNING WALL, UNDER POWER LINES |
| 1-3 | 12" | WILLOW OAK | UNDER POWER LINES |
| 1-4 | 12" | ACACIA | GOOD CONDITION |
| 1-5 | 12" | WALNUT | SPRINTS AT 4 FEET |
| 1-6 | 12" | ACACIA | GOOD CONDITION |
| 1-7 | 12" | WALNUT | GOOD CONDITION |
| 1-8 | 12" | BLACK WALNUT | THIN OVER RESIDENTIAL HOUSE |
| 1-9 | 22" | ACACIA | GOOD CONDITION |
| 1-10 | 12" | SPURGEY ALN | GOOD CONDITION |
| 1-11 | 30" | FEHUN | GOOD CONDITION |
| 1-12 | 12" | WALNUT | GOOD CONDITION |
| 1-13 | 12" | WALNUT | GOOD CONDITION |
| 1-14 | 12" | WALNUT | GOOD CONDITION |
| 1-15 | 12" | WALNUT | GOOD CONDITION |
| 1-16 | 12" | WALNUT | GOOD CONDITION |
| 1-17 | 12" | WALNUT | GOOD CONDITION |
| 1-18 | 12" | WALNUT | GOOD CONDITION |
| 1-19 | 12" | WALNUT | GOOD CONDITION |
| 1-20 | 12" | WALNUT | GOOD CONDITION |
| 1-21 | 12" | WALNUT | GOOD CONDITION |
| 1-22 | 12" | WALNUT | GOOD CONDITION |
| 1-23 | 12" | WALNUT | GOOD CONDITION |
| 1-24 | 12" | WALNUT | GOOD CONDITION |
| 1-25 | 12" | WALNUT | GOOD CONDITION |
| 1-26 | 12" | WALNUT | GOOD CONDITION |
| 1-27 | 12" | WALNUT | GOOD CONDITION |
| 1-28 | 12" | WALNUT | GOOD CONDITION |
| 1-29 | 12" | WALNUT | GOOD CONDITION |
| 1-30 | 12" | WALNUT | GOOD CONDITION |
| 1-31 | 12" | WALNUT | GOOD CONDITION |
| 1-32 | 12" | WALNUT | GOOD CONDITION |
| 1-33 | 12" | WALNUT | GOOD CONDITION |
| 1-34 | 12" | WALNUT | GOOD CONDITION |
| 1-35 | 12" | WALNUT | GOOD CONDITION |
| 1-36 | 12" | WALNUT | GOOD CONDITION |
| 1-37 | 12" | WALNUT | GOOD CONDITION |
| 1-38 | 12" | WALNUT | GOOD CONDITION |
| 1-39 | 12" | WALNUT | GOOD CONDITION |
| 1-40 | 12" | WALNUT | GOOD CONDITION |
| 1-41 | 12" | WALNUT | GOOD CONDITION |
| 1-42 | 12" | WALNUT | GOOD CONDITION |
| 1-43 | 12" | WALNUT | GOOD CONDITION |
| 1-44 | 12" | WALNUT | GOOD CONDITION |
| 1-45 | 12" | WALNUT | GOOD CONDITION |
| 1-46 | 12" | WALNUT | GOOD CONDITION |
| 1-47 | 12" | WALNUT | GOOD CONDITION |
| 1-48 | 12" | WALNUT | GOOD CONDITION |
| 1-49 | 12" | WALNUT | GOOD CONDITION |
| 1-50 | 12" | WALNUT | GOOD CONDITION |
| 1-51 | 12" | WALNUT | GOOD CONDITION |
| 1-52 | 12" | WALNUT | GOOD CONDITION |
| 1-53 | 12" | WALNUT | GOOD CONDITION |
| 1-54 | 12" | WALNUT | GOOD CONDITION |
| 1-55 | 12" | WALNUT | GOOD CONDITION |
| 1-56 | 12" | WALNUT | GOOD CONDITION |
| 1-57 | 12" | WALNUT | GOOD CONDITION |
| 1-58 | 12" | WALNUT | GOOD CONDITION |
| 1-59 | 12" | WALNUT | GOOD CONDITION |
| 1-60 | 12" | WALNUT | GOOD CONDITION |
| 1-61 | 12" | WALNUT | GOOD CONDITION |
| 1-62 | 12" | WALNUT | GOOD CONDITION |
| 1-63 | 12" | WALNUT | GOOD CONDITION |
| 1-64 | 12" | WALNUT | GOOD CONDITION |

| TREE TAG | SIZE | TYPE | REMARKS |
|----------|------|----------|----------------|
| 1-62 | 12" | SYCAMORE | GOOD CONDITION |
| 1-63 | 12" | WALNUT | GOOD CONDITION |
| 1-64 | 12" | WALNUT | GOOD CONDITION |
| 1-65 | 12" | WALNUT | GOOD CONDITION |
| 1-66 | 12" | WALNUT | GOOD CONDITION |
| 1-67 | 12" | WALNUT | GOOD CONDITION |
| 1-68 | 12" | WALNUT | GOOD CONDITION |
| 1-69 | 12" | WALNUT | GOOD CONDITION |
| 1-70 | 12" | WALNUT | GOOD CONDITION |
| 1-71 | 12" | WALNUT | GOOD CONDITION |
| 1-72 | 12" | WALNUT | GOOD CONDITION |
| 1-73 | 12" | WALNUT | GOOD CONDITION |
| 1-74 | 12" | WALNUT | GOOD CONDITION |
| 1-75 | 12" | WALNUT | GOOD CONDITION |
| 1-76 | 12" | WALNUT | GOOD CONDITION |
| 1-77 | 12" | WALNUT | GOOD CONDITION |
| 1-78 | 12" | WALNUT | GOOD CONDITION |
| 1-79 | 12" | WALNUT | GOOD CONDITION |
| 1-80 | 12" | WALNUT | GOOD CONDITION |
| 1-81 | 12" | WALNUT | GOOD CONDITION |
| 1-82 | 12" | WALNUT | GOOD CONDITION |
| 1-83 | 12" | WALNUT | GOOD CONDITION |
| 1-84 | 12" | WALNUT | GOOD CONDITION |
| 1-85 | 12" | WALNUT | GOOD CONDITION |
| 1-86 | 12" | WALNUT | GOOD CONDITION |
| 1-87 | 12" | WALNUT | GOOD CONDITION |
| 1-88 | 12" | WALNUT | GOOD CONDITION |
| 1-89 | 12" | WALNUT | GOOD CONDITION |
| 1-90 | 12" | WALNUT | GOOD CONDITION |
| 1-91 | 12" | WALNUT | GOOD CONDITION |
| 1-92 | 12" | WALNUT | GOOD CONDITION |
| 1-93 | 12" | WALNUT | GOOD CONDITION |
| 1-94 | 12" | WALNUT | GOOD CONDITION |
| 1-95 | 12" | WALNUT | GOOD CONDITION |
| 1-96 | 12" | WALNUT | GOOD CONDITION |
| 1-97 | 12" | WALNUT | GOOD CONDITION |
| 1-98 | 12" | WALNUT | GOOD CONDITION |
| 1-99 | 12" | WALNUT | GOOD CONDITION |
| 1-100 | 12" | WALNUT | GOOD CONDITION |

PROJECT NO: 27037-102
 DATE: FEBRUARY 2, 2009
 REVISIONS:
 DRAWN BY: B.HALL
 REVIEWED BY: ALMORARY

SITE ANALYSIS
 CROSS SECTIONS

C-4

CHapel Hill Carrboro City
 Schools Elementary School #11

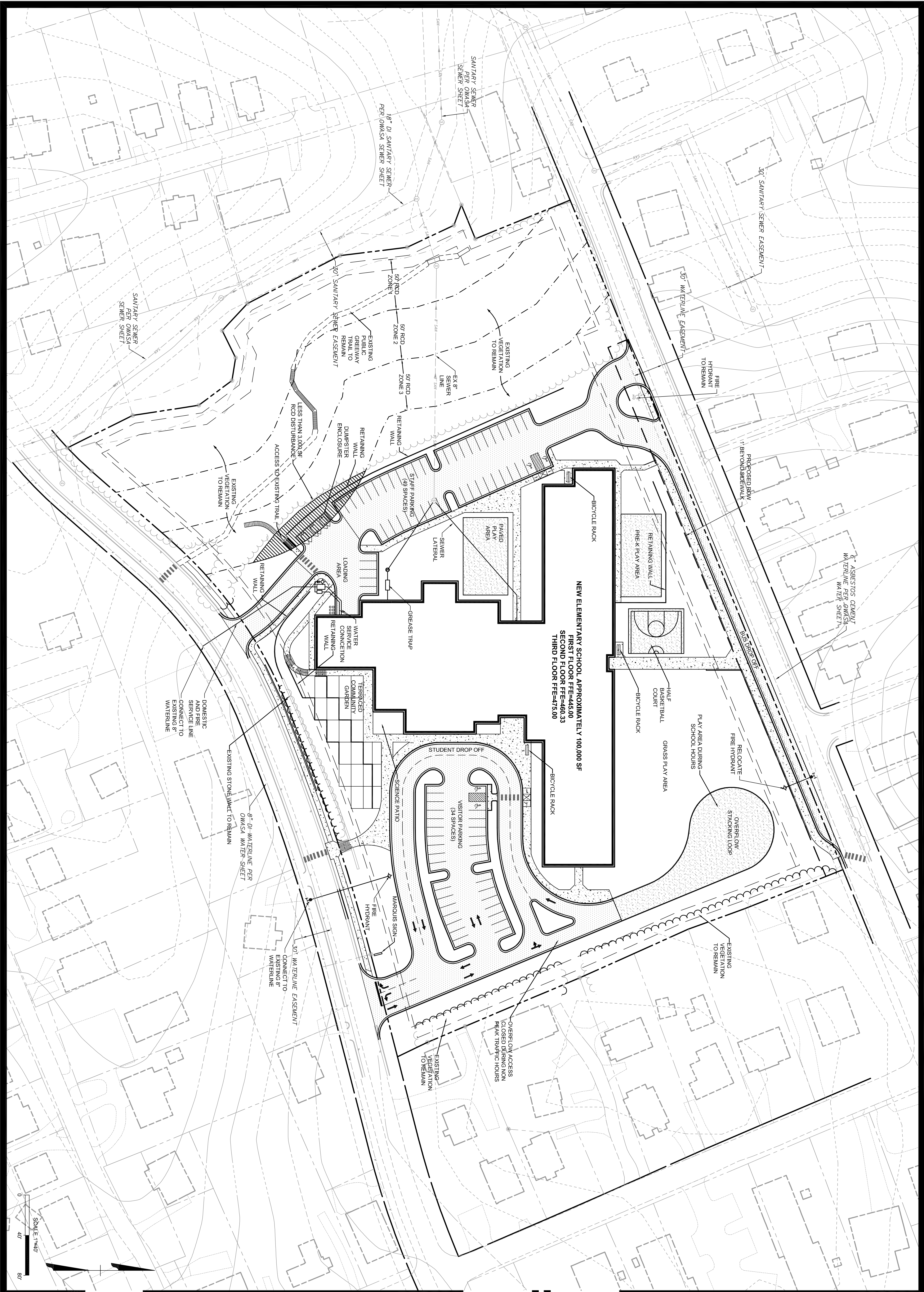
CHapel Hill, North Carolina

TIMMONS GROUP
 YOUR VISION ACHIEVED THROUGH US

5415 North Havel, Suite 110
 Raleigh, NC 27617
 Tel: 919.866.4950
 www.timmons.com

MOSELEY ARCHITECTS
 A PROFESSIONAL CORPORATION

3000 RDU CENTER DRIVE SUITE 217, RALEIGH, NORTH CAROLINA, 27660
 PHONE (919) 840-0091 FAX (919) 840-0045
 MOSELEYARCHITECTS.COM



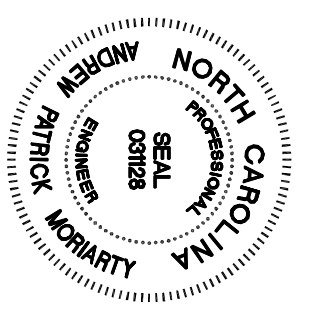
C-5

SITE LAYOUT AND UTILITY PLAN

PROJECT NO: 27037-102
 DATE: FEBRUARY 2, 2009
 REVISIONS:
 DRAWN BY: THH
 REVIEWED BY: ALMORIARY

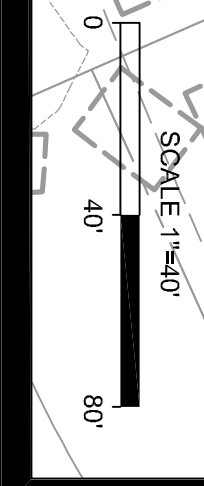
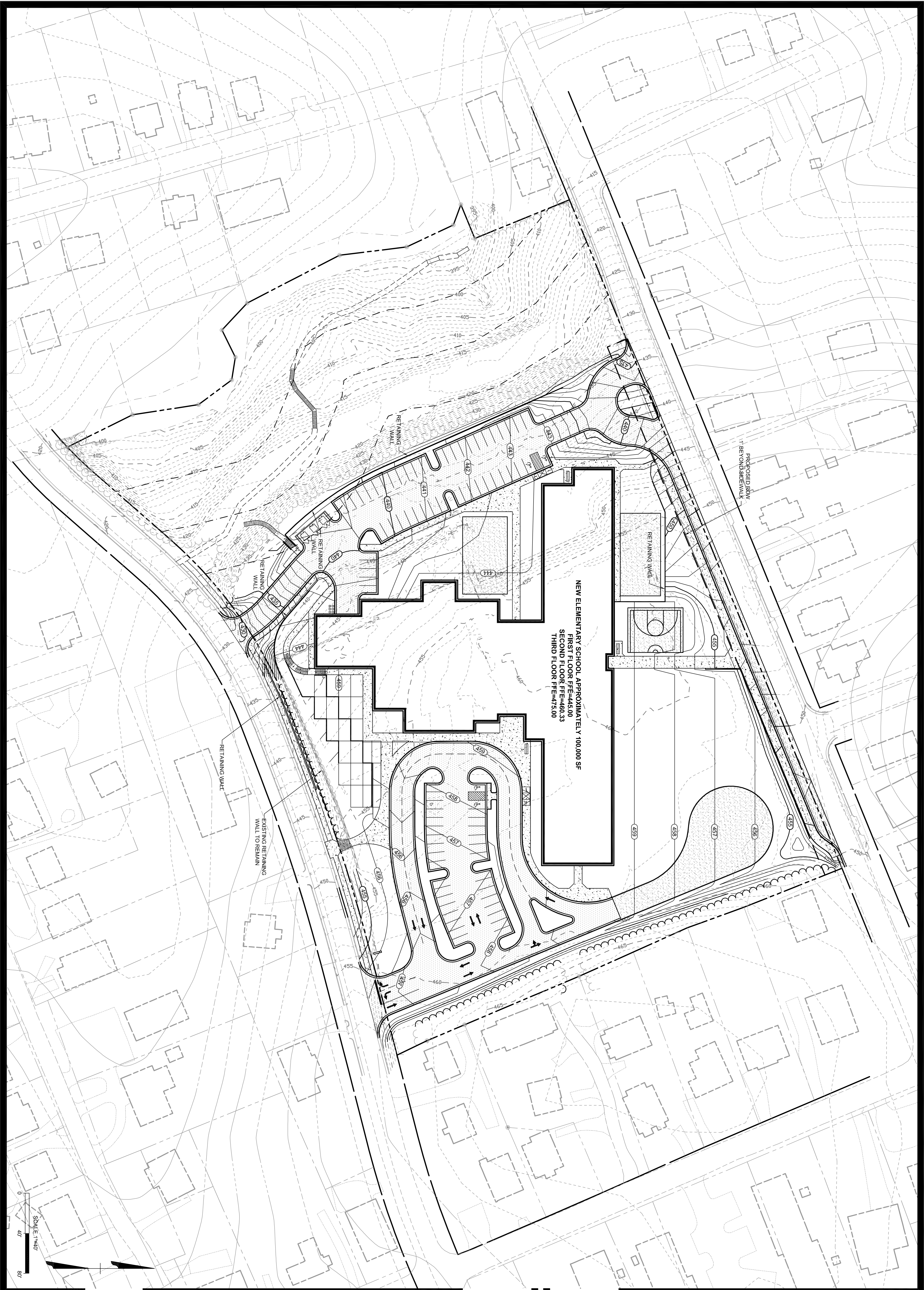
CHAPEL HILL CARRBORO CITY SCHOOLS ELEMENTARY SCHOOL #11

CHAPEL HILL, NORTH CAROLINA



MOSELEY ARCHITECTS A PROFESSIONAL CORPORATION

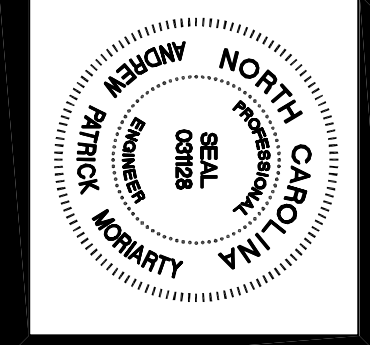
3000 RDU CENTER DRIVE SUITE 217, RALEIGH, NORTH CAROLINA, 27560
 PHONE (919) 840-0091 FAX (919) 840-0045
 MOSELEYARCHITECTS.COM



PROJECT NO:
27037-102
DATE:
FEBRUARY 2, 2009
REVISIONS:
DRAWN BY:
B.HALL
REVIEWED BY:
AMORIARY

**CHAPEL HILL CARRBORO CITY
SCHOOLS ELEMENTARY SCHOOL #11**
CHAPEL HILL, NORTH CAROLINA

TIMMONS GROUP
YOUR VISION ACHIEVED THROUGH OURS.
1000 W. HARRIS STREET, SUITE 100
RALEIGH, NC 27603
TEL: 919.856.4501
FAX: 919.856.3503
WWW.TIMMONSGROUP.COM



MOSELEY ARCHITECTS
A PROFESSIONAL CORPORATION
3000 RDU CENTER DRIVE SUITE 217, RALEIGH, NORTH CAROLINA, 27560
PHONE (919) 840-0091 FAX (919) 840-0045
MOSELEYARCHITECTS.COM

C-6
GRADING
AND
DRAINAGE
PLAN

**PROGRESS
 PRINT NOT FOR
 CONSTRUCTION**

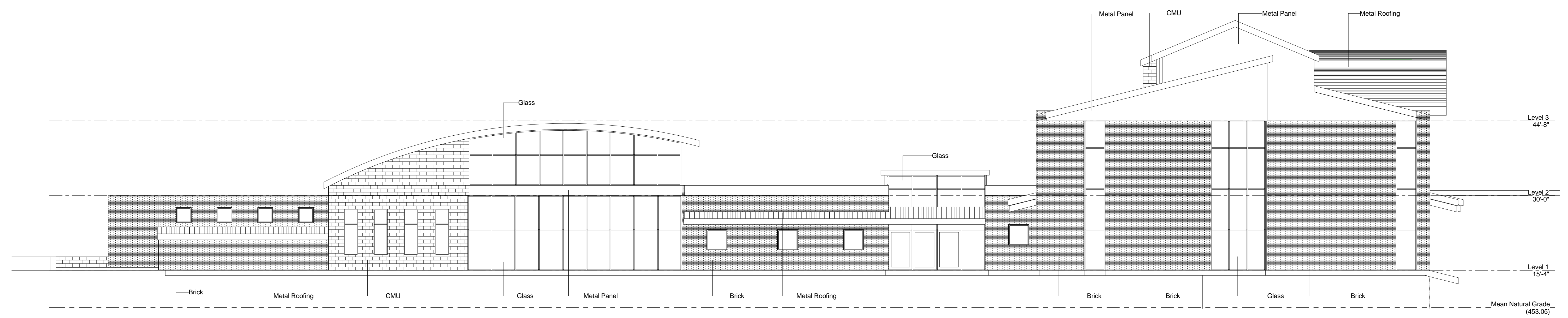
Elementary School # 11

Chapel Hill - Carrboro City Schools
 Chapel Hill, NC

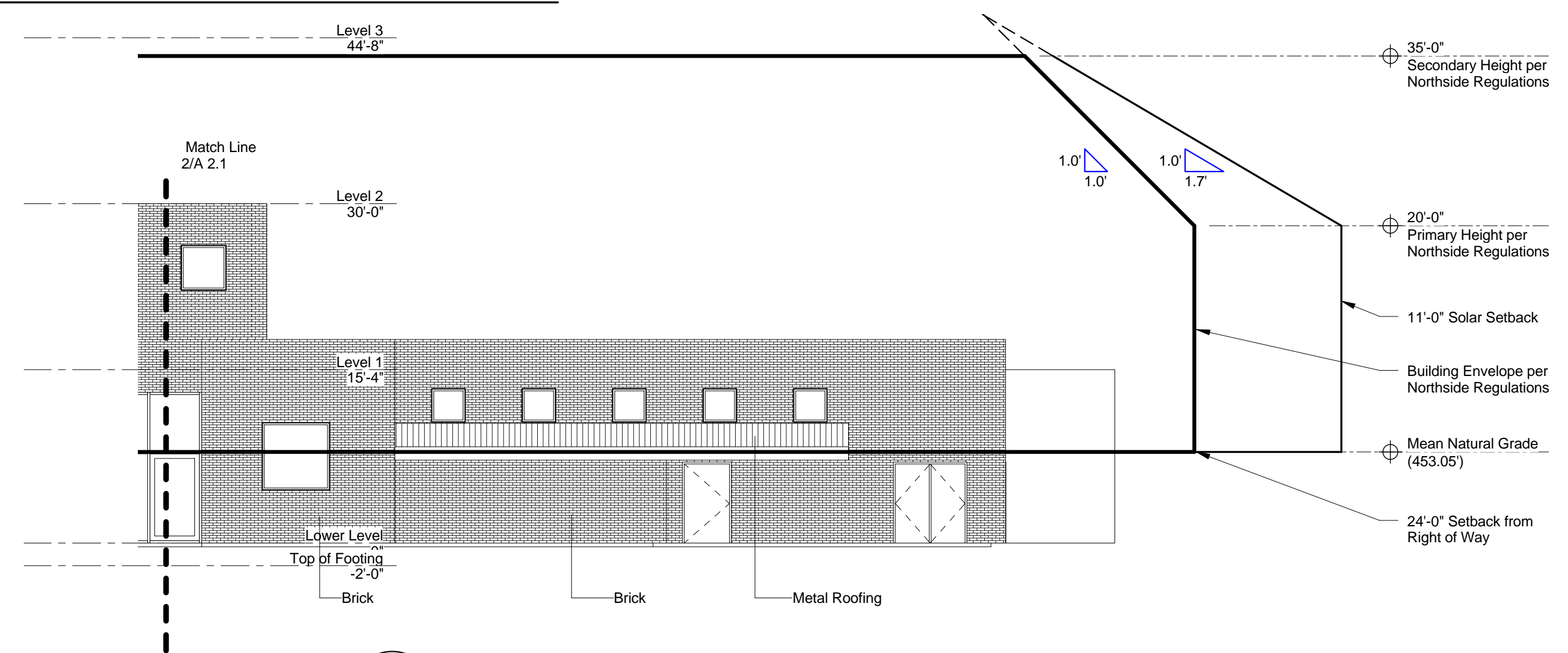
| | |
|--------------|------------------|
| PROJECT NO: | 480720 |
| DATE: | January 16, 2008 |
| REVISIONS: | |
| DRAWN BY: | Author |
| REVIEWED BY: | Checker |

**Bldg Elevations -
 East & West**

A-2.1

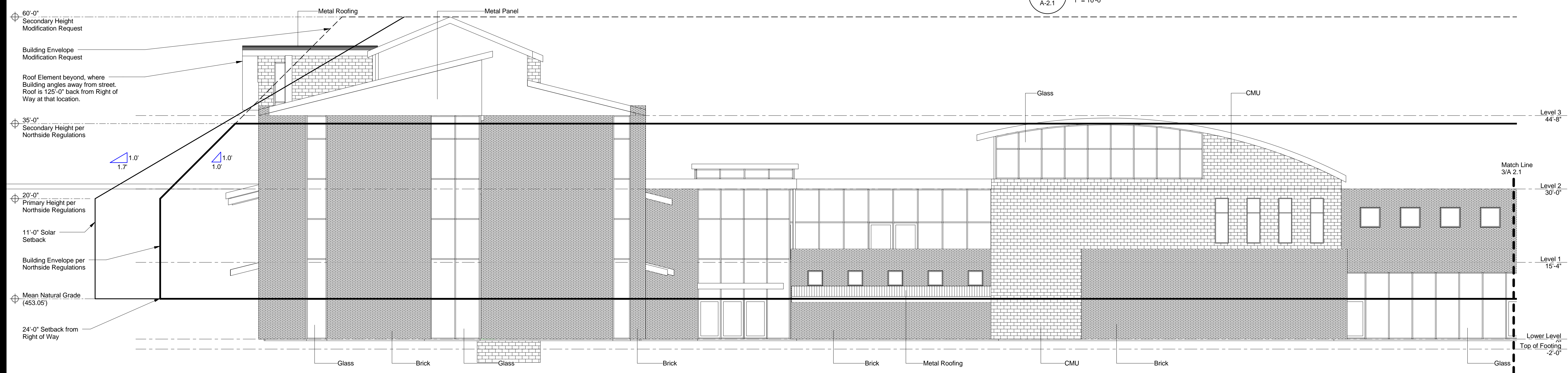


1 East Presentation Elevation
 A-2.1 1" = 10'-0"



3 West Elevation - South End
 A-2.1 1" = 10'-0"

Note: Building Envelope is indicated only on the West Elevation, where it is closest to the limits of the Building. All other areas are also within envelope Guidelines.



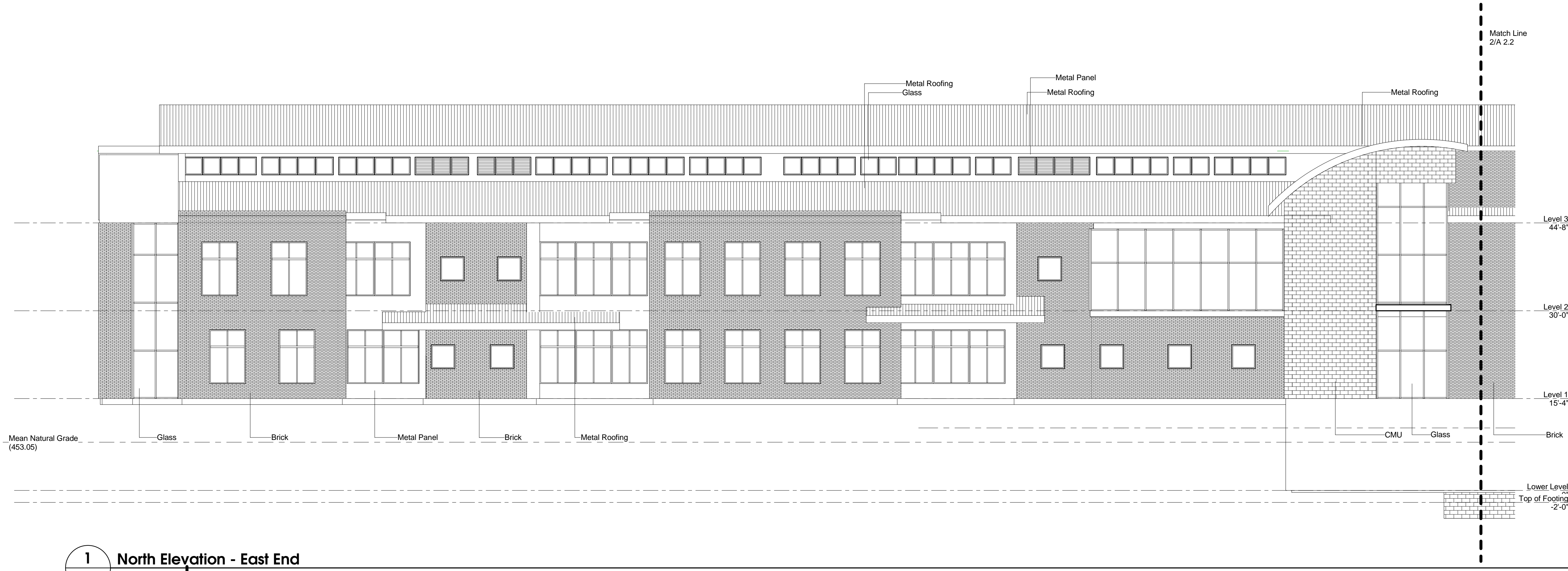
2 West Elevation - North End
 A-2.1 1" = 10'-0"

2/2/2009 11:56:32 AM

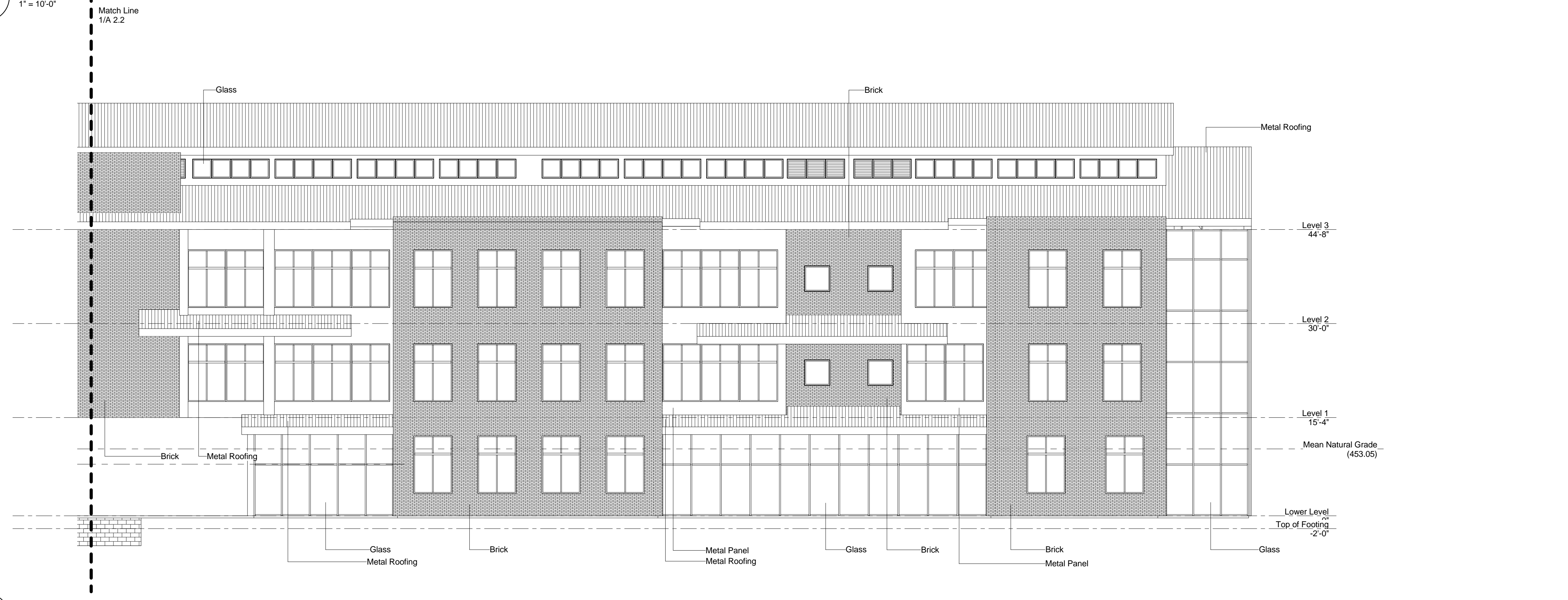
**PROGRESS
PRINT NOT FOR
CONSTRUCTION**

Elementary School # 11

Chapel Hill - Carrboro City Schools
Chapel Hill, NC



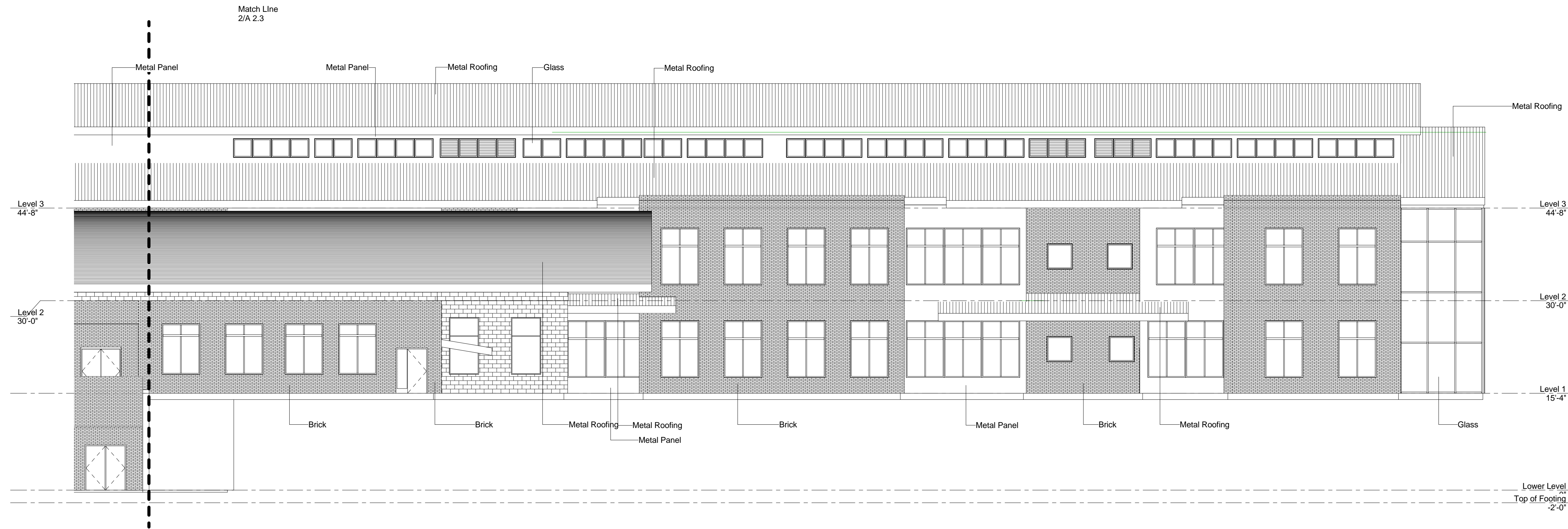
1 North Elevation - East End
A-2.2 1" = 10'-0"



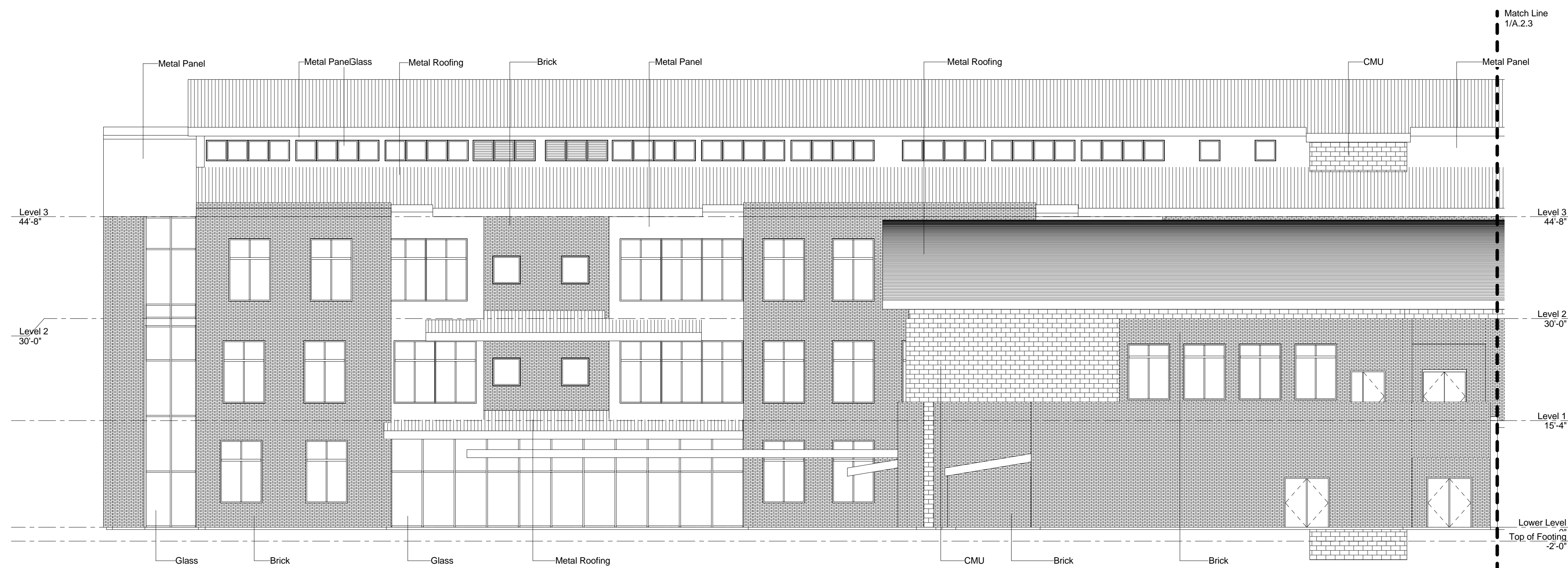
2 North Elevation - West End
A-2.2 1" = 10'-0"

| | |
|--------------|------------------|
| PROJECT NO: | 480720 |
| DATE: | January 16, 2008 |
| REVISIONS: | |
| DRAWN BY: | Author |
| REVIEWED BY: | Checker |

**Bldg Elevation -
North**



1 South Elevation - West End
A-2.3 1" = 10'-0"



2 South Elevation - East End
A-2.3 1" = 10'-0"

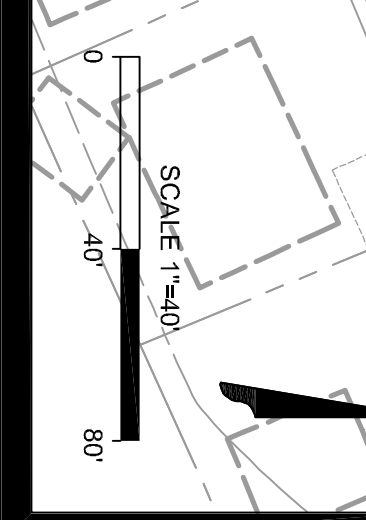
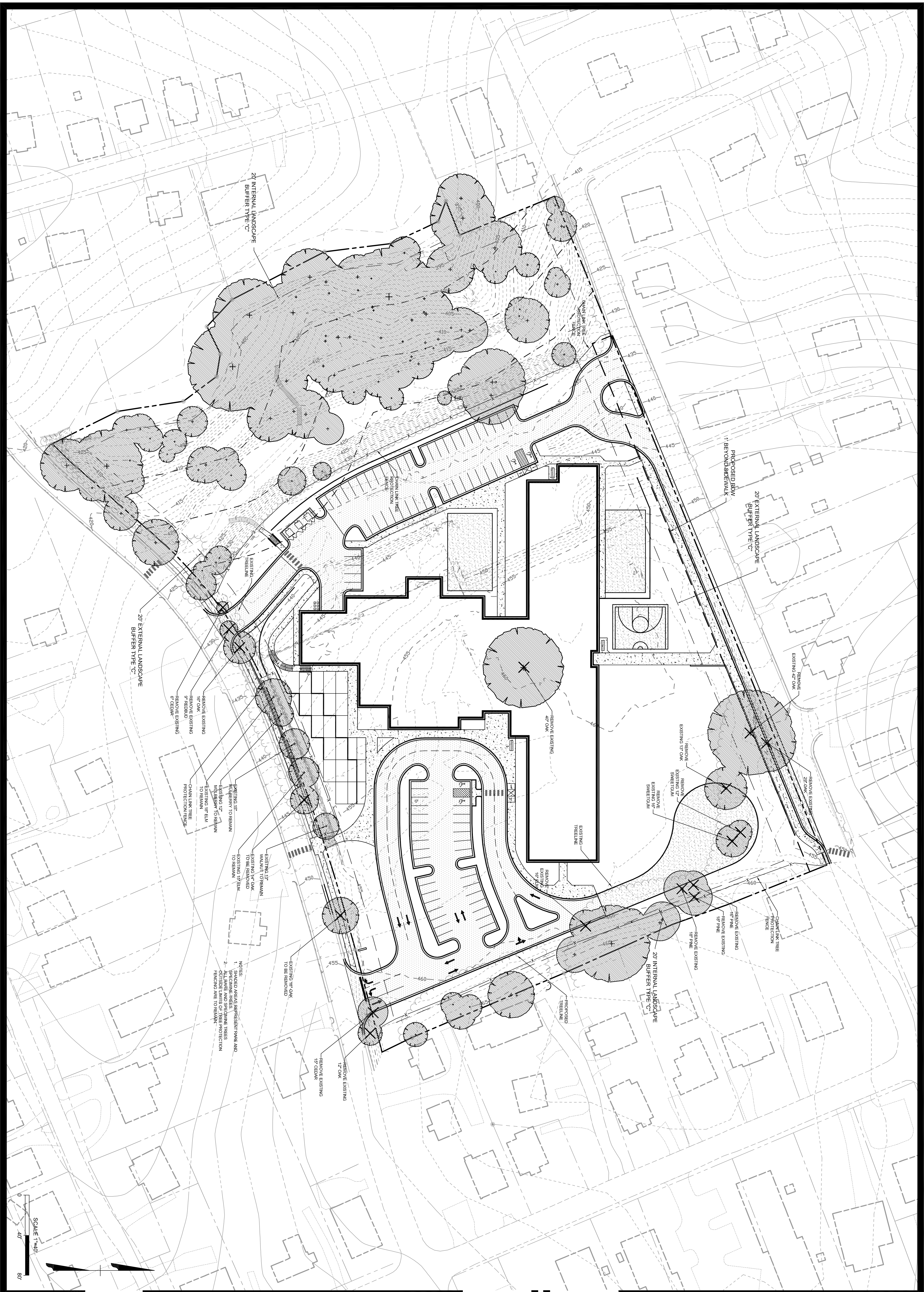
PROGRESS
PRINT NOT FOR
CONSTRUCTION

Elementary School # 11

Chapel Hill - Carrboro City Schools
Chapel Hill, NC

| | |
|--------------|------------------|
| PROJECT NO: | 480720 |
| DATE: | January 16, 2008 |
| REVISIONS: | |
| DRAWN BY: | Author |
| REVIEWED BY: | Checker |

Bldg Elevation -
South

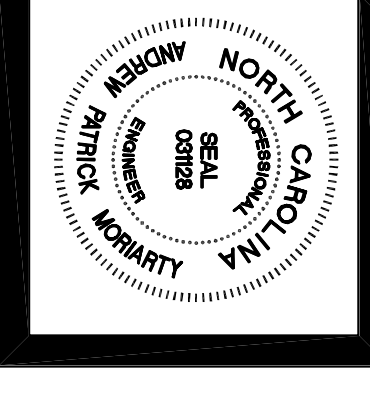


TREE PROTECTION PLAN

PROJECT NO: 27037-102
DATE: FEBRUARY 2, 2009
REVISIONS:
DRAWN BY:
REVIEWED BY: ALMORIARTY

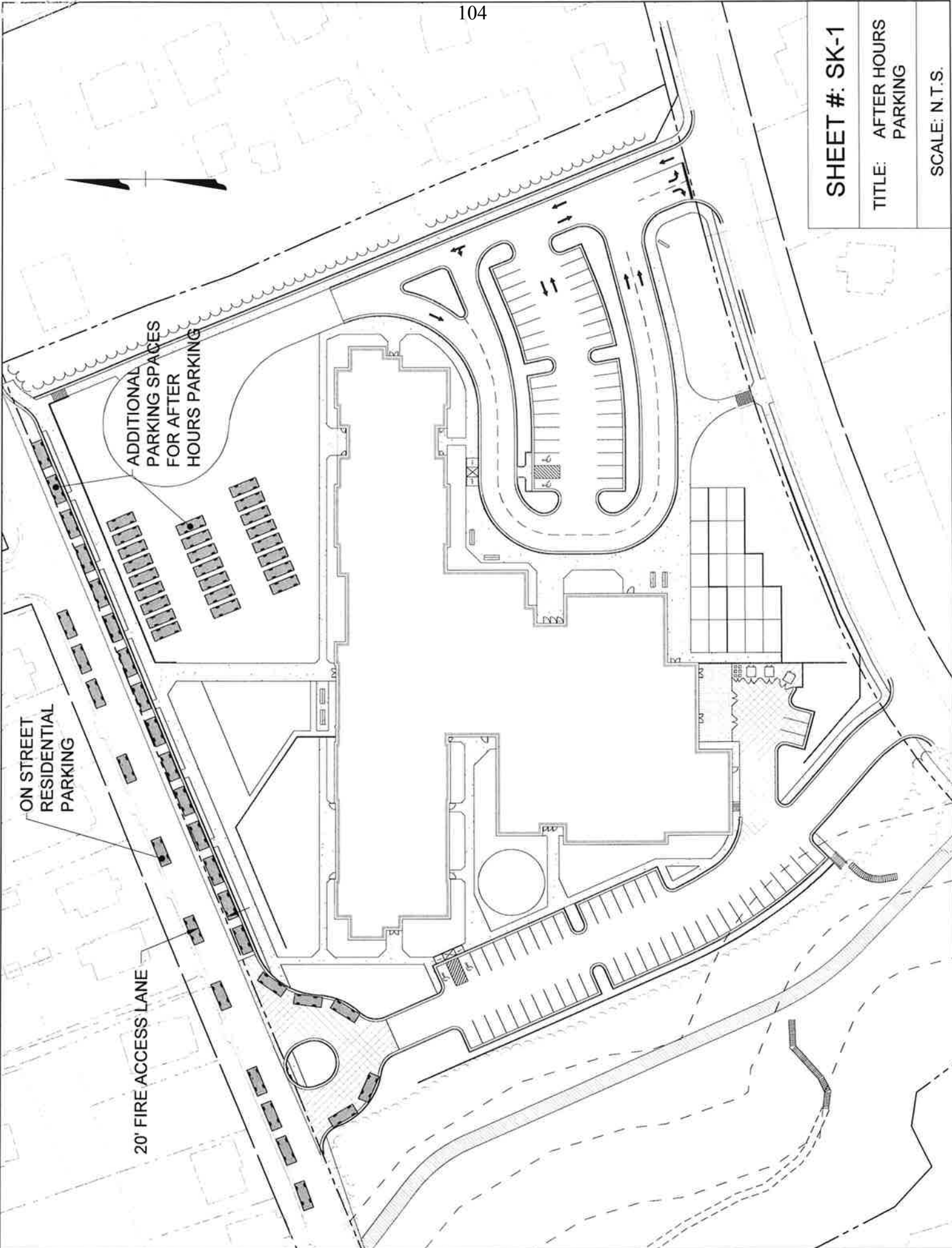
CHAPEL HILL CARRBORO CITY SCHOOLS ELEMENTARY SCHOOL #11
CHAPEL HILL, NORTH CAROLINA

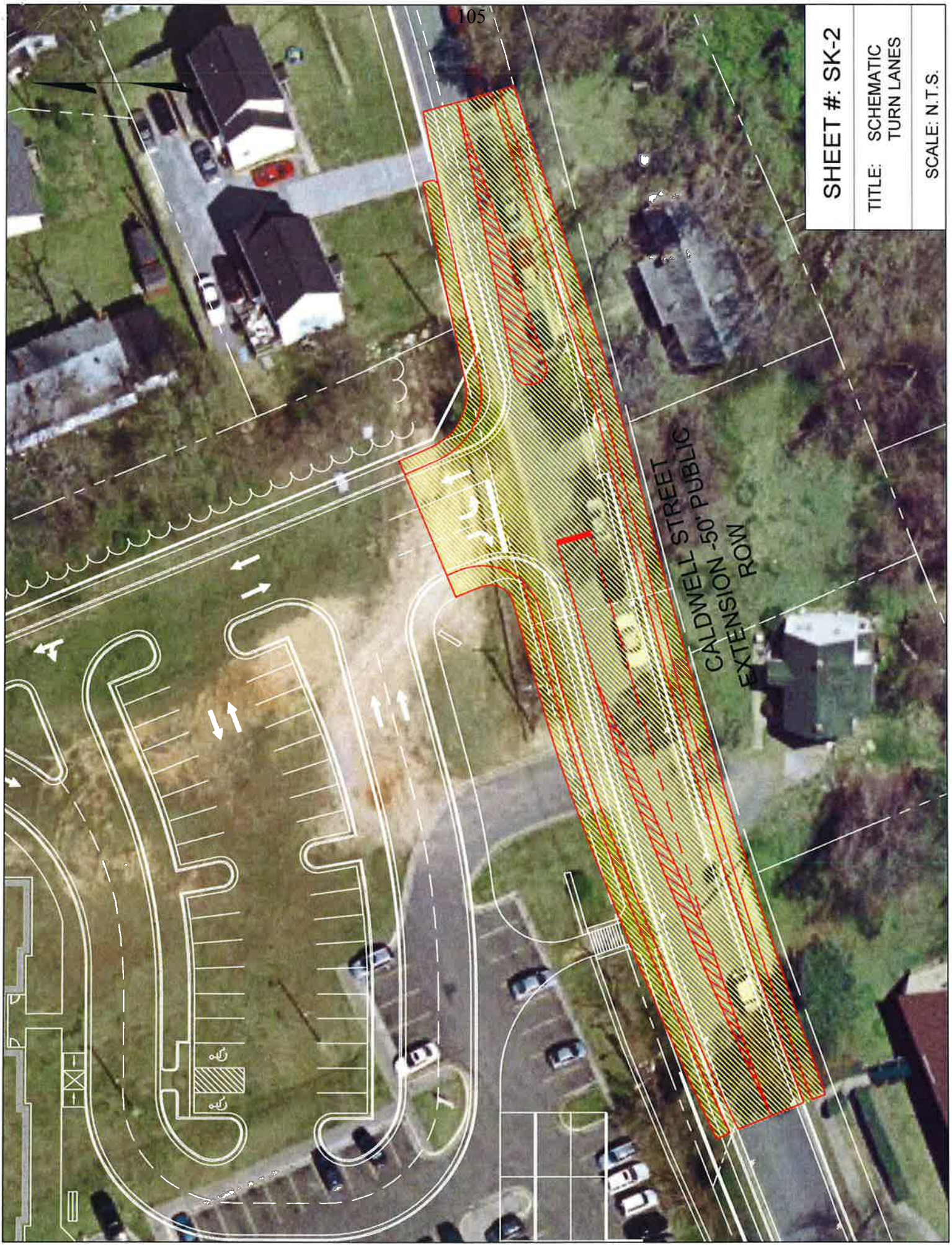
TIMMONS GROUP
YOUR VISION ACHIEVED THROUGH OURS.
1000 W. GARDNER STREET, SUITE 100
RALEIGH, NC 27601
TEL: 919.876.4500
FAX: 919.876.4501
WWW.TIMMONSGROUP.COM



MOSELEY ARCHITECTS
A PROFESSIONAL CORPORATION
3000 RDU CENTER DRIVE SUITE 217, RALEIGH, NORTH CAROLINA, 27560
PHONE (919) 840-0091 FAX (919) 840-0045
MOSELEYARCHITECTS.COM

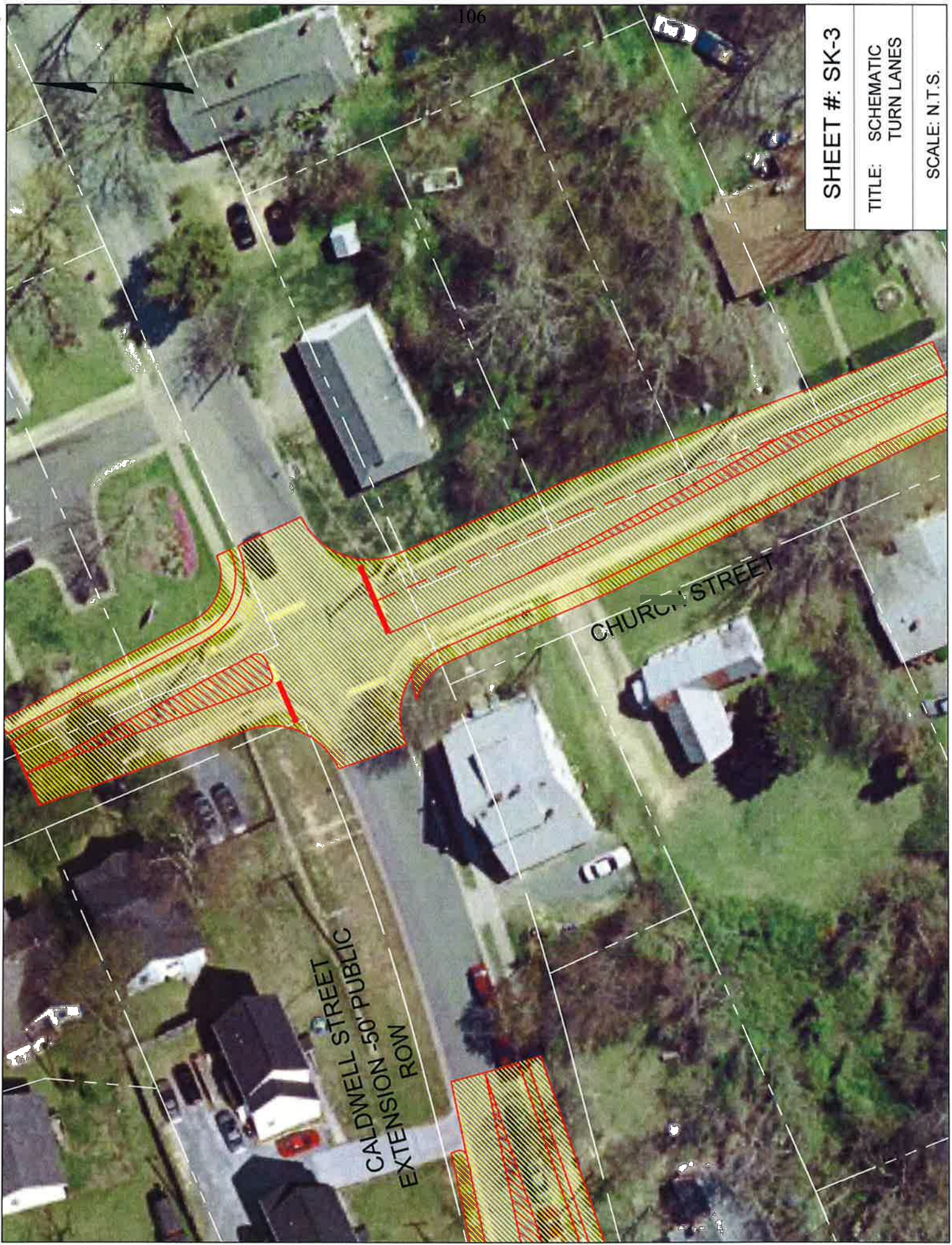
SHEET #: SK-1
**TITLE: AFTER HOURS
PARKING**
SCALE: N.T.S.





| |
|----------------------------------------|
| SHEET #: SK-2 |
| TITLE: SCHEMATIC TURN LANES |
| SCALE: N.T.S. |

CALDWELL STREET - 50' PUBLIC
EXTENSION - 50' PUBLIC ROW



| |
|----------------------------------------|
| SHEET #: SK-3 |
| TITLE: SCHEMATIC TURN LANES |
| SCALE: N.T.S. |



North Bound Church Street

- Relocated existing storm sewer inlets, power poles, sidewalk, and retaining wall.



South west corner of Church Street and Caldwell Street

- Relocated retaining wall and remove existing tree.



South side of Caldwell Street across from proposed school entrance

- Residential driveway located very close to existing sidewalk. Addition of the left turn lane would cause resident to park on street as he would not be able to fit in the driveway without overhanging in the sidewalk.



North side of Caldwell Street west of proposed school entrance

- Existing stone stairs may need to be demolished as part of road widening.

PEAK HOURS

TRAFFIC FLOW

GATES
CLOSED

SHEET #: SK-4

TITLE: KISS & GO
STACKING LOOP

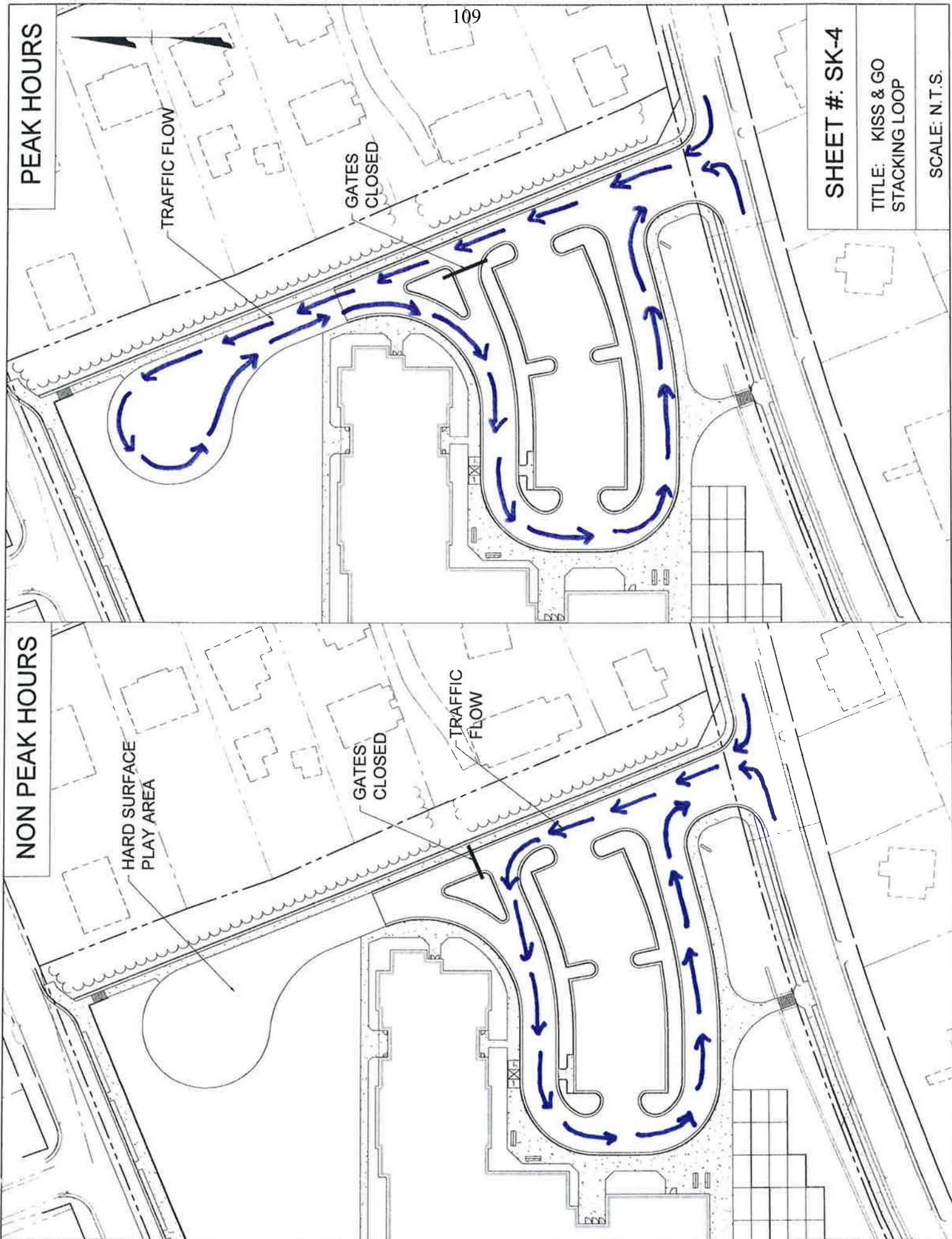
SCALE: N.T.S.

NON PEAK HOURS

HARD SURFACE
PLAY AREA

GATES
CLOSED

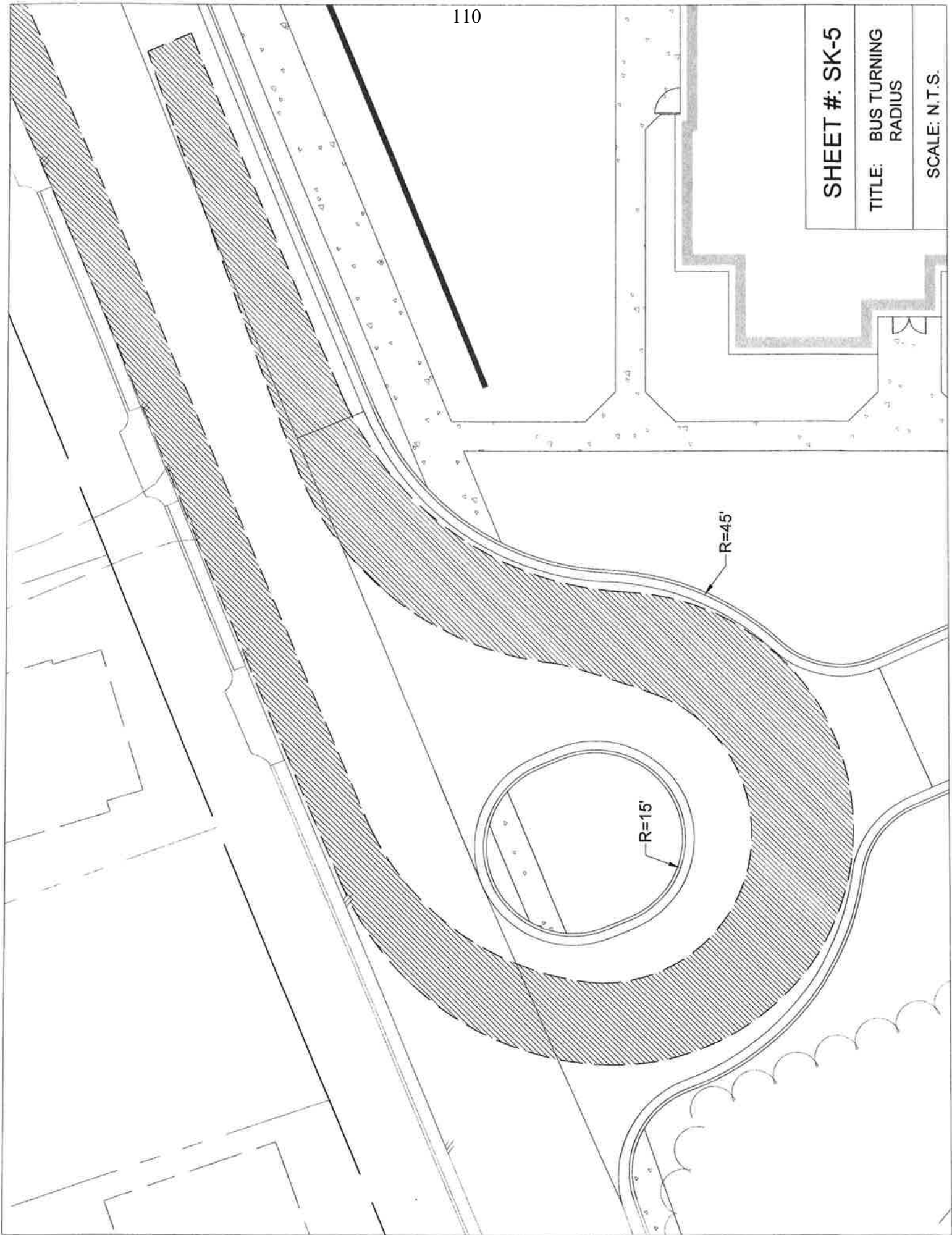
TRAFFIC
FLOW



SHEET #: SK-5

TITLE: BUS TURNING
RADIUS

SCALE: N.T.S.



CHAPEL HILL CARRBORO CITY SCHOOLS ELEMENTARY SCHOOL #11

CHAPEL HILL, NORTH CAROLINA

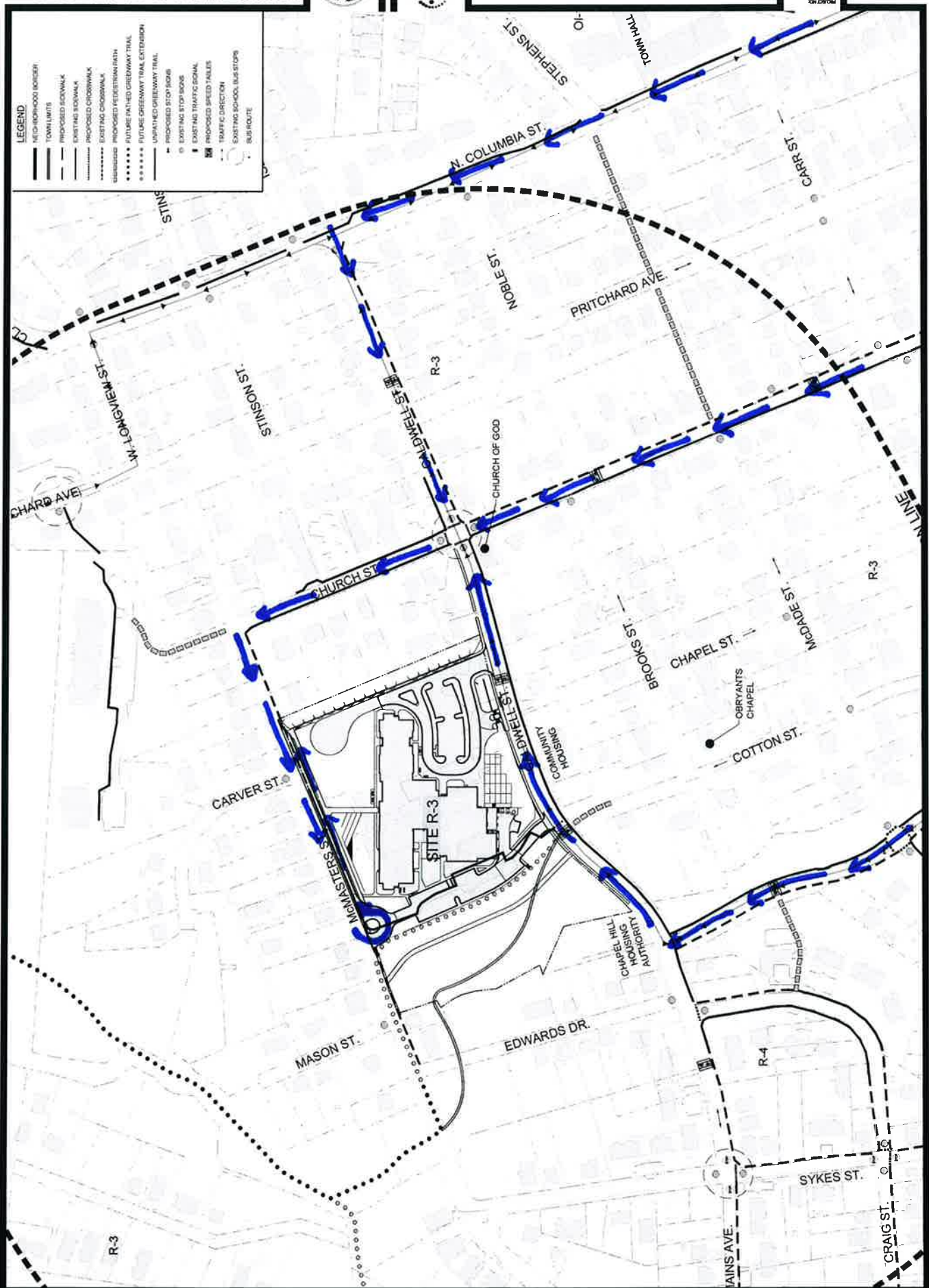
| | |
|-------------|---------------------------------------------------------|
| DATE | 10/15/2009 |
| PROJECT | CHAPEL HILL CARRBORO CITY SCHOOLS ELEMENTARY SCHOOL #11 |
| SCALE | AS SHOWN |
| DRAWN BY | MOSELEY ARCHITECTS |
| CHECKED BY | MOSELEY ARCHITECTS |
| APPROVED BY | MOSELEY ARCHITECTS |



MOSELEY ARCHITECTS
 A PROFESSIONAL CORPORATION
 2002 SOUTH CENTRAL EXPRESSWAY, SUITE 117, RAYLEIGH, NORTH CAROLINA, 27604
 PHONE: (919) 489-0001 FAX: (919) 489-0005
 WWW.MOSELEYARCHITECTS.COM

LEGEND

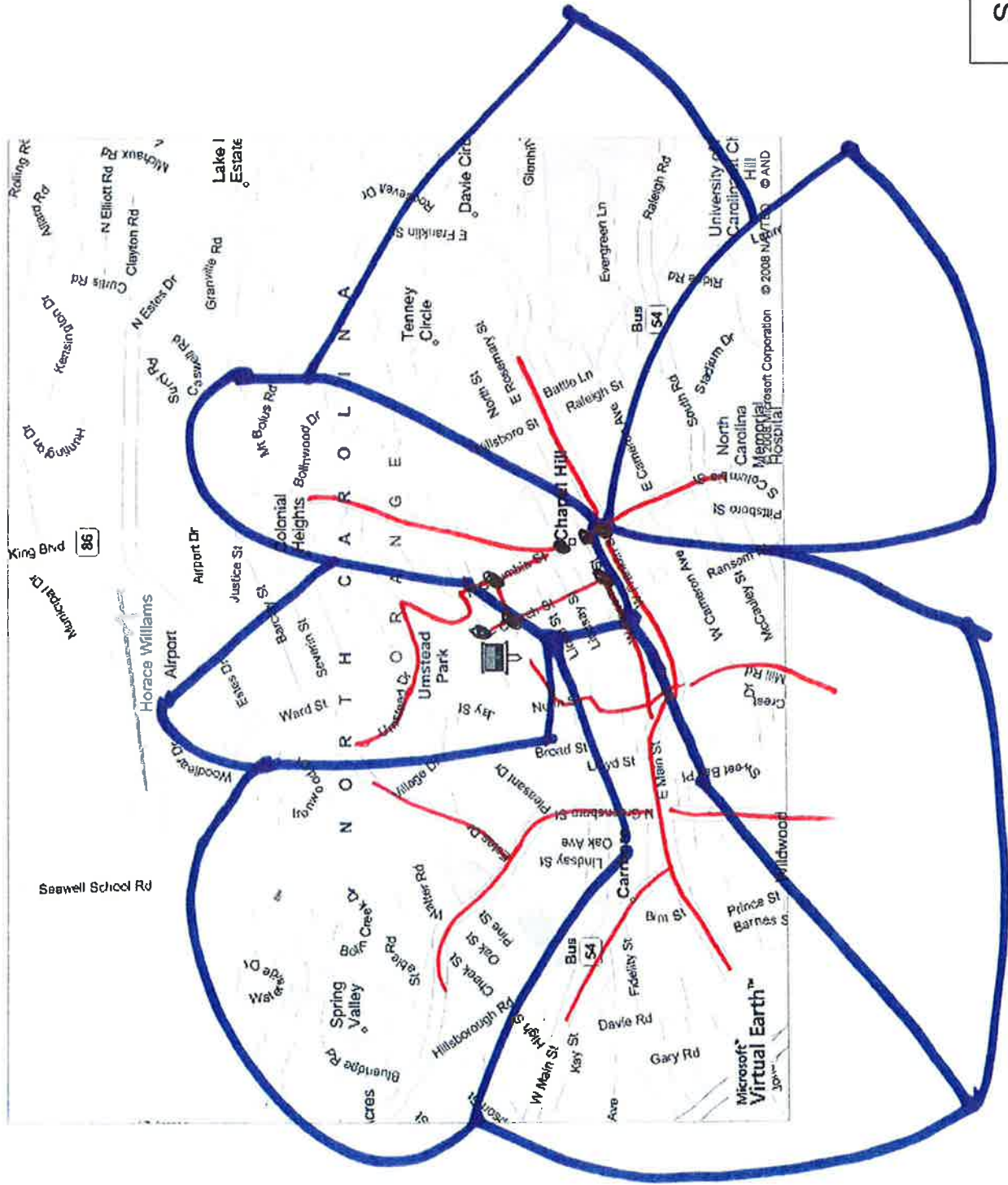
- NEIGHBORHOOD BORDER
- TOWN LIMITS
- PROPOSED SIDEWALK
- EXISTING SIDEWALK
- PROPOSED CROSSWALK
- EXISTING CROSSWALK
- PROPOSED PAVED BIKEWAY
- EXISTING PAVED BIKEWAY
- PROPOSED GREENWAY TRAIL
- EXISTING GREENWAY TRAIL
- UNPAVED GREENWAY TRAIL
- PROPOSED STOP SIGN
- EXISTING STOP SIGN
- EXISTING TRAFFIC SIGNAL
- PROPOSED SPEED TABLES
- TRAFFIC DIRECTION
- EXISTING SCHOOL BUS STOPS
- BUS ROUTE

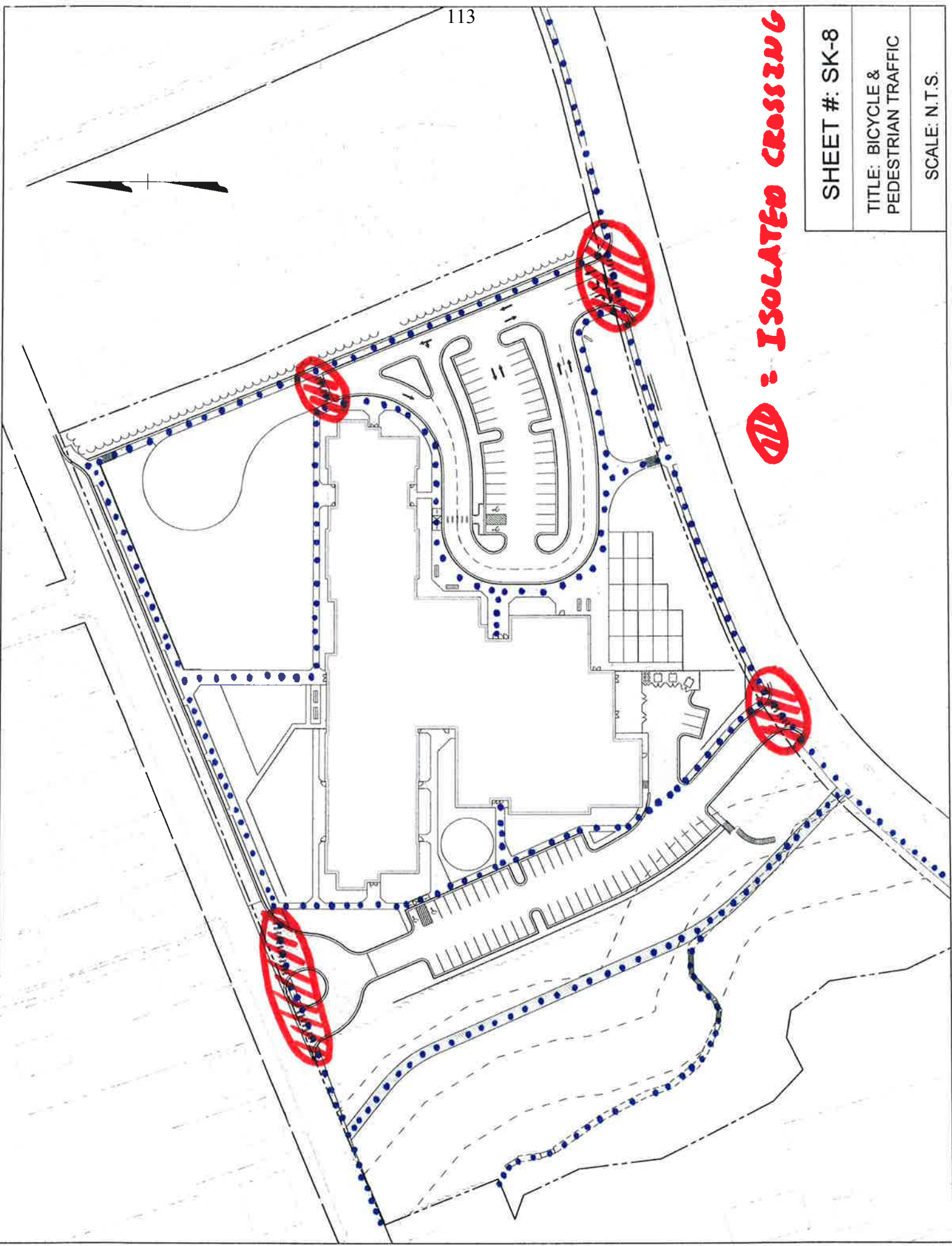


SHEET #: SK-7

TITLE: BUS ROUTING
PLAN PER TIA

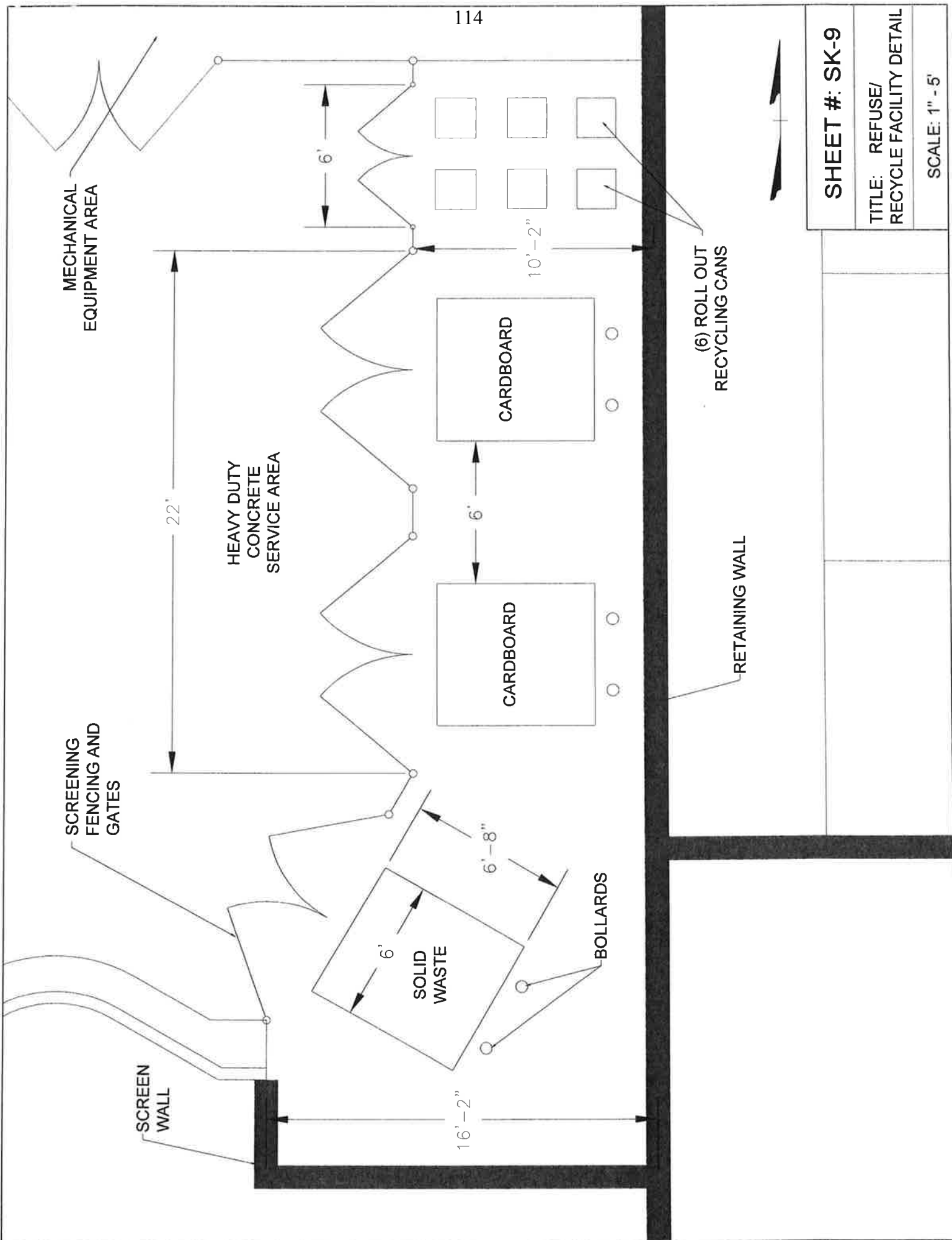
SCALE: N.T.S.





Ⓢ : ISOLATED CROSSING

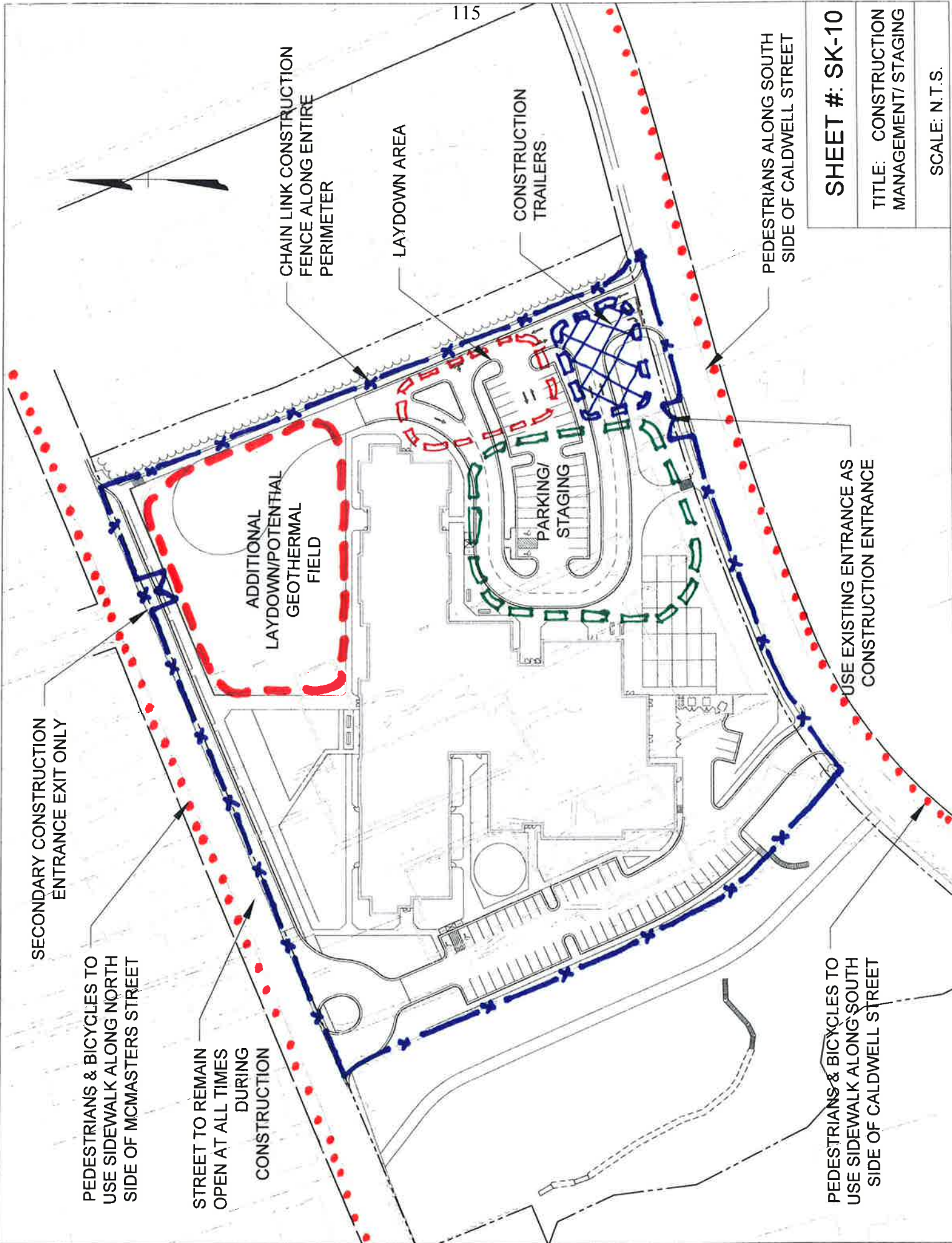
| |
|-------------------------------------|
| SHEET #: SK-8 |
| TITLE: BICYCLE & PEDESTRIAN TRAFFIC |
| SCALE: N.T.S. |



SHEET #: SK-9

TITLE: REFUSE/
RECYCLE FACILITY DETAIL

SCALE: 1" = 5'



SECONDARY CONSTRUCTION ENTRANCE EXIT ONLY

PEDESTRIANS & BICYCLES TO USE SIDEWALK ALONG NORTH SIDE OF MCMASTERS STREET

STREET TO REMAIN OPEN AT ALL TIMES DURING CONSTRUCTION

ADDITIONAL LAYDOWN/POTENTIAL GEOTHERMAL FIELD

CHAIN LINK CONSTRUCTION FENCE ALONG ENTIRE PERIMETER

LAYDOWN AREA

CONSTRUCTION TRAILERS

PARKING/STAGING

PEDESTRIANS ALONG SOUTH SIDE OF CALDWELL STREET

PEDESTRIANS & BICYCLES TO USE SIDEWALK ALONG SOUTH SIDE OF CALDWELL STREET

USE EXISTING ENTRANCE AS CONSTRUCTION ENTRANCE

SHEET #: SK-10

TITLE: CONSTRUCTION MANAGEMENT/ STAGING

SCALE: N.T.S.