

**CHAPEL HILL CARRBORO CITY
SCHOOLS ELEMENTARY SCHOOL #11**

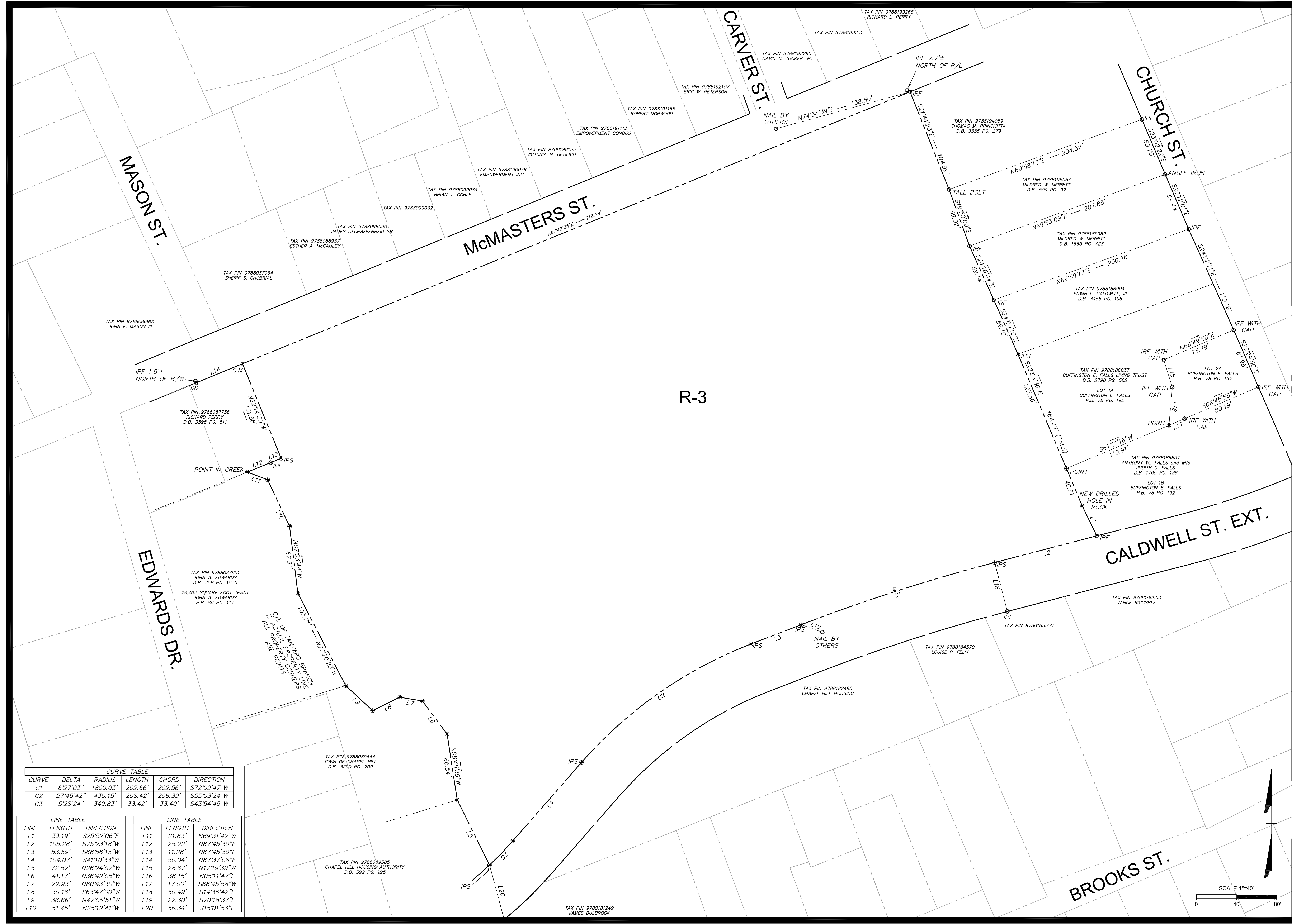
CHAPEL HILL, NORTH CAROLINA

PROJECT NO: 2707-102
DATE: FEBRUARY 2, 2009
REVISION:
DRAWN BY: B.HALL
CHECKED BY: A.MOSELEY

REZONING
EXHIBIT

EX-1

PROGRESS PRINT NOT FOR CONSTRUCTION



R-3

MASON ST.

CARVER ST.

McMASTERS ST.

CHURCH ST.

EDWARDS DR.

CALDWELL ST. EXT.

BROOKS ST.

TAX PIN 9788086901
JOHN E. MASON III

TAX PIN 9788087756
RICHARD PERRY
D.B. 3598 PG. 511

TAX PIN 9788087651
JOHN A. EDWARDS
D.B. 298 PG. 1035
28,462 SQUARE FOOT TRACT
JOHN A. EDWARDS
P.B. 86 PG. 117

TAX PIN 9788089444
TOWN OF CHAPEL HILL
D.B. 3290 PG. 209

TAX PIN 9788089395
CHAPEL HILL HOUSING AUTHORITY
D.B. 392 PG. 195

TAX PIN 9788181249
JAMES BULBROOK

CURVE TABLE

CURVE	DELTA	RADIUS	LENGTH	CHORD	DIRECTION
C1	6°27'03"	1800.03'	202.66'	202.56'	S72°09'47"W
C2	27°45'42"	430.15'	208.42'	206.39'	S55°03'24"W
C3	5°28'24"	349.83'	33.42'	33.40'	S43°54'45"W

LINE TABLE

LINE	LENGTH	DIRECTION
L1	33.19'	S25°52'06"E
L2	105.28'	S75°23'18"W
L3	53.59'	S68°56'15"W
L4	104.07'	S41°10'33"W
L5	72.52'	N26°24'07"W
L6	41.17'	N36°42'05"W
L7	22.93'	N80°43'30"W
L8	30.16'	S63°47'00"W
L9	36.66'	N47°06'51"W
L10	51.45'	N25°12'41"W

LINE TABLE

LINE	LENGTH	DIRECTION
L11	21.63'	N69°31'42"W
L12	25.22'	N67°45'30"E
L13	11.28'	N67°45'30"E
L14	50.04'	N67°37'08"E
L15	28.67'	N17°19'39"W
L16	38.15'	N05°11'47"E
L17	17.00'	S66°45'58"W
L18	50.49'	S14°36'42"E
L19	22.30'	S70°18'37"E
L20	56.34'	S15°01'53"E

