

LEGEND

[Symbol]	GENERAL UTILITY EASEMENT
[Symbol]	WATER UTILITY EASEMENT (OFF PART OF 511.1)
[Symbol]	SEWER UTILITY EASEMENT (OFF PART OF 511.1)
[Symbol]	STREET LIGHT EASEMENT
[Symbol]	STREET LIGHT
[Symbol]	ADJACENT PROPERTY LINES
[Symbol]	RESOURCE CONSERVATION DISTRICT (RCD)
[Symbol]	ADJACENT PROPERTY
[Symbol]	CRUISE COUNTY CORNER
[Symbol]	DEVELOPMENT
[Symbol]	STEAM (DORMER)
[Symbol]	POUNDING
[Symbol]	POUND



COLEBY REDFOOT ZACK
 ARCHITECTURAL & ENGINEERING
 215 S. CHAPEL HILL, WELLSVILLE, PA 16801
 PHONE: 717-833-1111 FAX: 717-833-1112

95

TOWN OPERATIONS CENTER FOR
 THE TOWN OF CHAPEL HILL
 MILLHURST
 CHAPEL HILL, NORTH CAROLINA

PROJECT NO. 0225
 SHEET NO. 0225
 DATE 02/20/04
 DRAWN BY
 CHECKED BY
 APPROVED BY

C1.0

DATE 02/20/04
 SHEET NO. 0225



MATCHLINE

MATCHLINE

MATCHLINE

MATCHLINE

LEGEND

- 1. SPECIAL USE ZONING BOUNDARY
- 2. TOWN JURISDICTIONAL LINE (PART OF 2013)
- 3. RCD BOUNDARY
- 4. OVERHEAD POWER LINE
- 5. CHAPEL HILL VALLEY LANE
- 6. STREAM
- 7. WETLANDS
- 8. SPECIMEN TREE
- 9. POND
- 10. OPEN FIELD
- 11. TREE LINE
- 12. OPEN FIELD
- 13. TREE LINE
- 14. OPEN FIELD
- 15. TREE LINE
- 16. OPEN FIELD
- 17. TREE LINE
- 18. OPEN FIELD
- 19. TREE LINE
- 20. OPEN FIELD
- 21. TREE LINE
- 22. OPEN FIELD
- 23. TREE LINE
- 24. OPEN FIELD
- 25. TREE LINE
- 26. OPEN FIELD
- 27. TREE LINE
- 28. OPEN FIELD
- 29. TREE LINE
- 30. OPEN FIELD
- 31. TREE LINE
- 32. OPEN FIELD
- 33. TREE LINE
- 34. OPEN FIELD
- 35. TREE LINE
- 36. OPEN FIELD
- 37. TREE LINE
- 38. OPEN FIELD
- 39. TREE LINE
- 40. OPEN FIELD
- 41. TREE LINE
- 42. OPEN FIELD
- 43. TREE LINE
- 44. OPEN FIELD
- 45. TREE LINE
- 46. OPEN FIELD
- 47. TREE LINE
- 48. OPEN FIELD
- 49. TREE LINE
- 50. OPEN FIELD
- 51. TREE LINE
- 52. OPEN FIELD
- 53. TREE LINE
- 54. OPEN FIELD
- 55. TREE LINE
- 56. OPEN FIELD
- 57. TREE LINE
- 58. OPEN FIELD
- 59. TREE LINE
- 60. OPEN FIELD
- 61. TREE LINE
- 62. OPEN FIELD
- 63. TREE LINE
- 64. OPEN FIELD
- 65. TREE LINE
- 66. OPEN FIELD
- 67. TREE LINE
- 68. OPEN FIELD
- 69. TREE LINE
- 70. OPEN FIELD
- 71. TREE LINE
- 72. OPEN FIELD
- 73. TREE LINE
- 74. OPEN FIELD
- 75. TREE LINE
- 76. OPEN FIELD
- 77. TREE LINE
- 78. OPEN FIELD
- 79. TREE LINE
- 80. OPEN FIELD
- 81. TREE LINE
- 82. OPEN FIELD
- 83. TREE LINE
- 84. OPEN FIELD
- 85. TREE LINE
- 86. OPEN FIELD
- 87. TREE LINE
- 88. OPEN FIELD
- 89. TREE LINE
- 90. OPEN FIELD
- 91. TREE LINE
- 92. OPEN FIELD
- 93. TREE LINE
- 94. OPEN FIELD
- 95. TREE LINE
- 96. OPEN FIELD
- 97. TREE LINE
- 98. OPEN FIELD
- 99. TREE LINE
- 100. OPEN FIELD
- 101. TREE LINE
- 102. OPEN FIELD
- 103. TREE LINE
- 104. OPEN FIELD
- 105. TREE LINE
- 106. OPEN FIELD
- 107. TREE LINE
- 108. OPEN FIELD
- 109. TREE LINE
- 110. OPEN FIELD
- 111. TREE LINE
- 112. OPEN FIELD
- 113. TREE LINE
- 114. OPEN FIELD
- 115. TREE LINE
- 116. OPEN FIELD
- 117. TREE LINE
- 118. OPEN FIELD
- 119. TREE LINE
- 120. OPEN FIELD
- 121. TREE LINE
- 122. OPEN FIELD
- 123. TREE LINE
- 124. OPEN FIELD
- 125. TREE LINE
- 126. OPEN FIELD
- 127. TREE LINE
- 128. OPEN FIELD
- 129. TREE LINE
- 130. OPEN FIELD
- 131. TREE LINE
- 132. OPEN FIELD
- 133. TREE LINE
- 134. OPEN FIELD
- 135. TREE LINE
- 136. OPEN FIELD
- 137. TREE LINE
- 138. OPEN FIELD
- 139. TREE LINE
- 140. OPEN FIELD
- 141. TREE LINE
- 142. OPEN FIELD
- 143. TREE LINE
- 144. OPEN FIELD
- 145. TREE LINE
- 146. OPEN FIELD
- 147. TREE LINE
- 148. OPEN FIELD
- 149. TREE LINE
- 150. OPEN FIELD
- 151. TREE LINE
- 152. OPEN FIELD
- 153. TREE LINE
- 154. OPEN FIELD
- 155. TREE LINE
- 156. OPEN FIELD
- 157. TREE LINE
- 158. OPEN FIELD
- 159. TREE LINE
- 160. OPEN FIELD
- 161. TREE LINE
- 162. OPEN FIELD
- 163. TREE LINE
- 164. OPEN FIELD
- 165. TREE LINE
- 166. OPEN FIELD
- 167. TREE LINE
- 168. OPEN FIELD
- 169. TREE LINE
- 170. OPEN FIELD
- 171. TREE LINE
- 172. OPEN FIELD
- 173. TREE LINE
- 174. OPEN FIELD
- 175. TREE LINE
- 176. OPEN FIELD
- 177. TREE LINE
- 178. OPEN FIELD
- 179. TREE LINE
- 180. OPEN FIELD
- 181. TREE LINE
- 182. OPEN FIELD
- 183. TREE LINE
- 184. OPEN FIELD
- 185. TREE LINE
- 186. OPEN FIELD
- 187. TREE LINE
- 188. OPEN FIELD
- 189. TREE LINE
- 190. OPEN FIELD
- 191. TREE LINE
- 192. OPEN FIELD
- 193. TREE LINE
- 194. OPEN FIELD
- 195. TREE LINE
- 196. OPEN FIELD
- 197. TREE LINE
- 198. OPEN FIELD
- 199. TREE LINE
- 200. OPEN FIELD



DATE 02/20/04
 SHEET NO. 0225



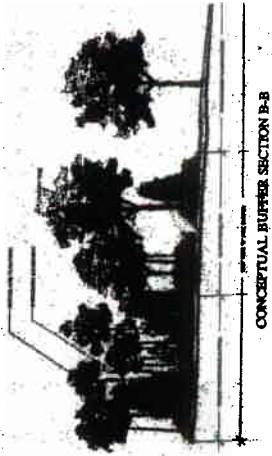
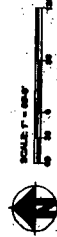
63

C3:3

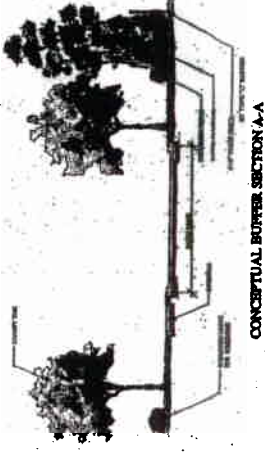
Project No. 020

Date: 02/20/04

Scale: 1" = 40'

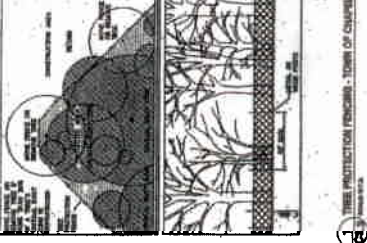


CONCEPTUAL BUFFER SECTION B-B



CONCEPTUAL BUFFER SECTION A-A

1. BUFFER ZONES SHALL BE MAINTAINED AS OPEN SPACE AND SHALL NOT BE USED FOR ANY OTHER PURPOSES.
2. BUFFER ZONES SHALL BE MAINTAINED AS OPEN SPACE AND SHALL NOT BE USED FOR ANY OTHER PURPOSES.
3. BUFFER ZONES SHALL BE MAINTAINED AS OPEN SPACE AND SHALL NOT BE USED FOR ANY OTHER PURPOSES.
4. BUFFER ZONES SHALL BE MAINTAINED AS OPEN SPACE AND SHALL NOT BE USED FOR ANY OTHER PURPOSES.



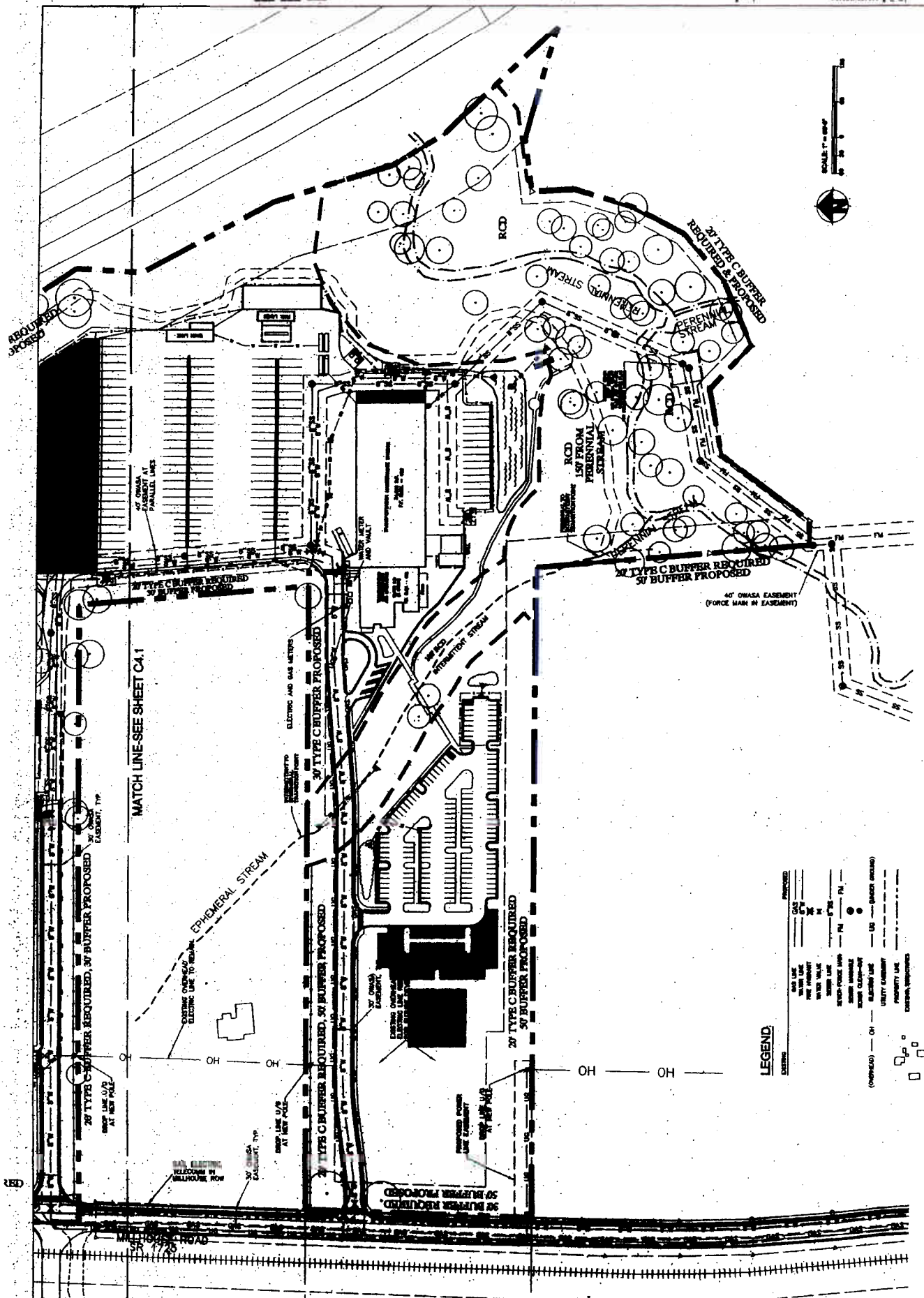
LEGEND

5'-10' OF BUFFER LINE
5'-0' OF BUFFER LINE
PROPERTY LINE
POND
TREE LINE
IMPROVEMENTS
PERMISSION NEEDS TO BE OBTAINED
TREE PROTECTION PERIMETER
IMMEDIATE TREE ZONE

1. BUFFER ZONES SHALL BE MAINTAINED AS OPEN SPACE AND SHALL NOT BE USED FOR ANY OTHER PURPOSES.
2. BUFFER ZONES SHALL BE MAINTAINED AS OPEN SPACE AND SHALL NOT BE USED FOR ANY OTHER PURPOSES.
3. BUFFER ZONES SHALL BE MAINTAINED AS OPEN SPACE AND SHALL NOT BE USED FOR ANY OTHER PURPOSES.
4. BUFFER ZONES SHALL BE MAINTAINED AS OPEN SPACE AND SHALL NOT BE USED FOR ANY OTHER PURPOSES.

MILLHOUSE ROAD

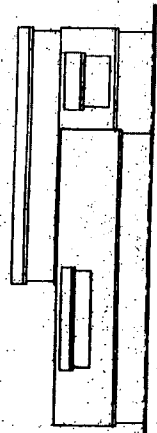
MATCH LINE-SEE SHEET C3.4



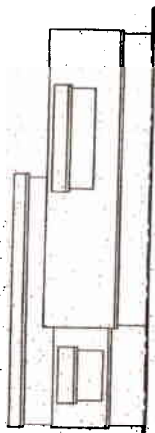
LEGEND

SYMBOL	DESCRIPTION
(Symbol)	20' TYPE C BUFFER REQUIRED, 50' BUFFER PROPOSED
(Symbol)	24' TYPE C BUFFER REQUIRED & PROPOSED
(Symbol)	40' OWASA EASEMENT (FORCE MAJE IN EASEMENT)
(Symbol)	PERENNIAL STREAM
(Symbol)	EPHEMERAL STREAM
(Symbol)	RCD
(Symbol)	FM
(Symbol)	OH
(Symbol)	SW
(Symbol)	UTILITY EASEMENT
(Symbol)	PRIORITY LANE
(Symbol)	EXISTING/PROPOSED

NOTES:
 1. ALL UTILITIES SHOWN ARE BASED ON RECORD DRAWINGS AND FIELD SURVEY DATA.
 2. THE TOWN OF CHAPEL HILL IS NOT RESPONSIBLE FOR THE ACCURACY OF THE UTILITIES SHOWN.
 3. THE TOWN OF CHAPEL HILL IS NOT RESPONSIBLE FOR THE ACCURACY OF THE UTILITIES SHOWN.
 4. THE TOWN OF CHAPEL HILL IS NOT RESPONSIBLE FOR THE ACCURACY OF THE UTILITIES SHOWN.



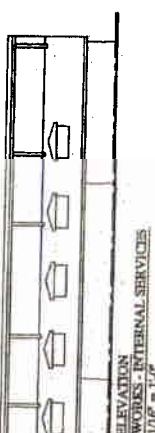
**SOUTH ELEVATION
 PUBLIC WORKS - ADMINISTRATION
 SCALE: 1/16" = 1'-0"**



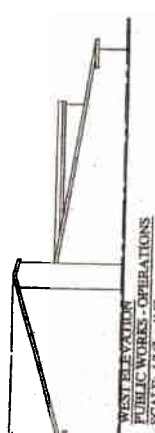
**NORTH ELEVATION
 PUBLIC WORKS - ADMINISTRATION
 SCALE: 1/16" = 1'-0"**



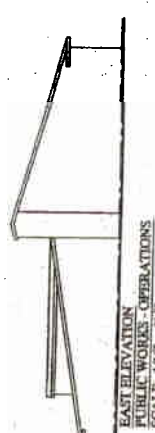
**NORTH ELEVATION
 PUBLIC WORKS - INTERNAL SERVICES
 SCALE: 1/16" = 1'-0"**



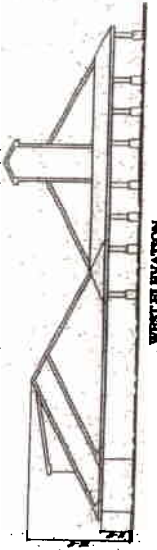
**SOUTH ELEVATION
 PUBLIC WORKS - INTERNAL SERVICES
 SCALE: 1/16" = 1'-0"**



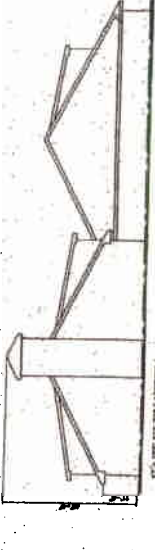
**WEST ELEVATION
 PUBLIC WORKS - OPERATIONS
 SCALE: 1/16" = 1'-0"**



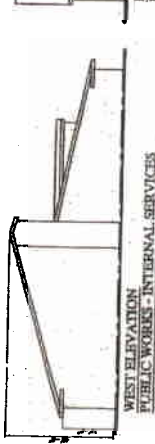
**EAST ELEVATION
 PUBLIC WORKS - OPERATIONS
 SCALE: 1/16" = 1'-0"**



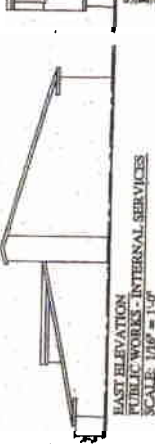
**WEST ELEVATION
 PUBLIC WORKS - ADMINISTRATION
 SCALE: 1/16" = 1'-0"**



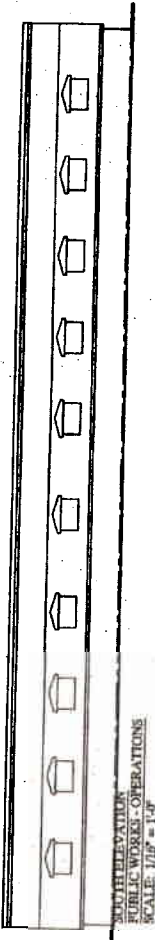
**EAST ELEVATION
 PUBLIC WORKS - ADMINISTRATION
 SCALE: 1/16" = 1'-0"**



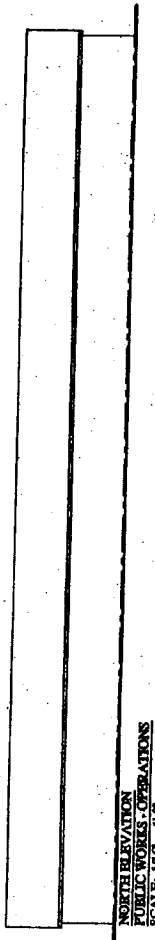
**WEST ELEVATION
 PUBLIC WORKS - INTERNAL SERVICES
 SCALE: 1/16" = 1'-0"**



**EAST ELEVATION
 PUBLIC WORKS - INTERNAL SERVICES
 SCALE: 1/16" = 1'-0"**



**SOUTH ELEVATION
 PUBLIC WORKS - OPERATIONS
 SCALE: 1/16" = 1'-0"**



**NORTH ELEVATION
 PUBLIC WORKS - OPERATIONS
 SCALE: 1/16" = 1'-0"**



DATE	1/11/11
SCALE	1/8" = 1'-0"
PROJECT NO.	001
ISSUE NO.	01

BUILDING ELEVATIONS 2

A1.1

DATE: 1/11/11
PROJECT NO.: 001
ISSUE NO.: 01



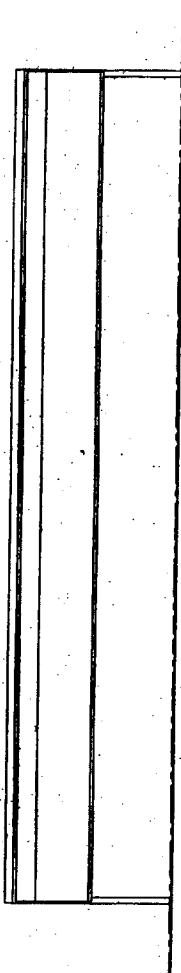
WEST ELEVATION
PUBLIC WORKS FLEET
SCALE: 1/8" = 1'-0"



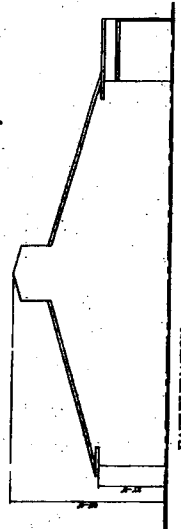
EAST ELEVATION
PUBLIC WORKS FLEET
SCALE: 1/8" = 1'-0"



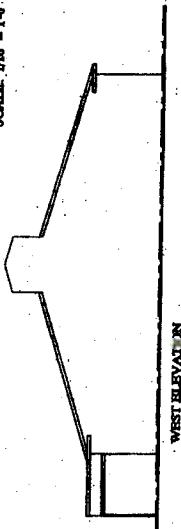
NORTH ELEVATION
PUBLIC WORKS FLEET
SCALE: 1/8" = 1'-0"



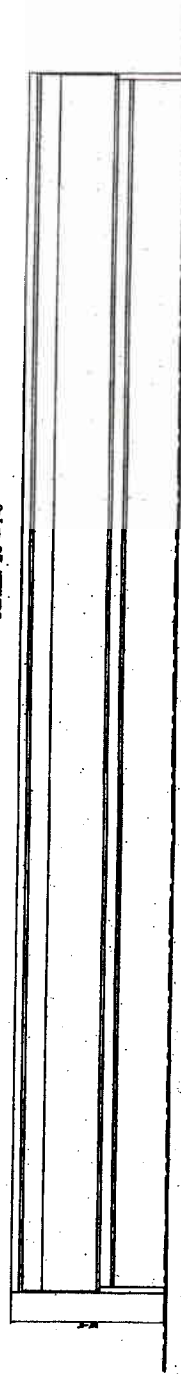
SOUTH ELEVATION
PUBLIC WORKS FLEET
SCALE: 1/8" = 1'-0"



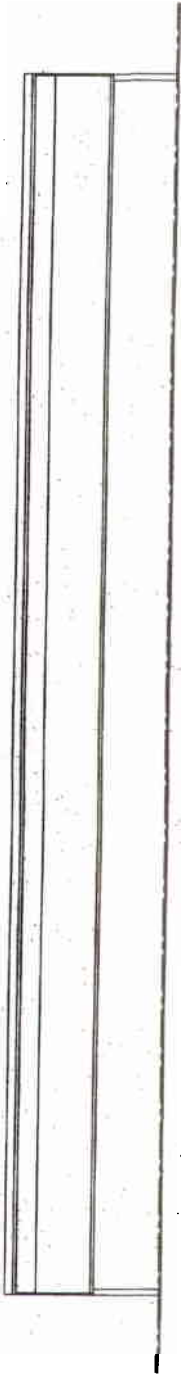
WEST ELEVATION
TRANSPORTATION DEPARTMENT
SCALE: 1/8" = 1'-0"



EAST ELEVATION
TRANSPORTATION DEPARTMENT
SCALE: 1/8" = 1'-0"



NORTH ELEVATION
TRANSPORTATION DEPARTMENT
SCALE: 1/8" = 1'-0"



SOUTH ELEVATION
TRANSPORTATION DEPARTMENT
SCALE: 1/8" = 1'-0"