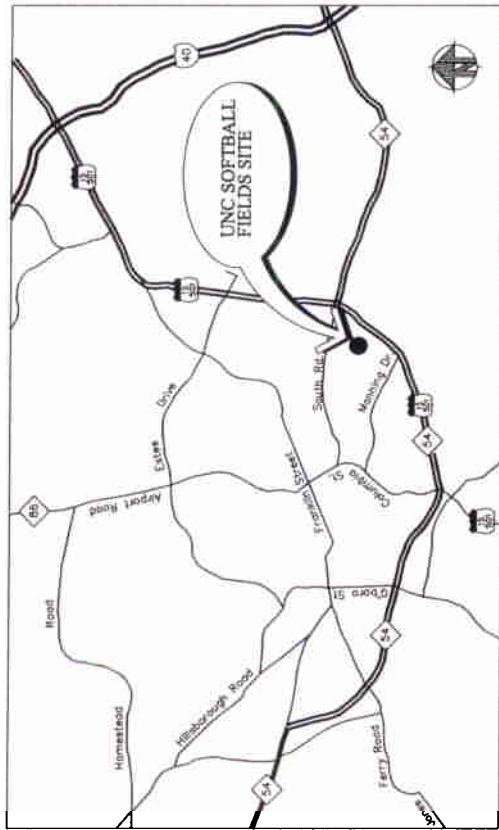


UNC SOFTBALL FIELDS

CONCEPT PLAN SUBMITTAL

CHAPEL HILL, NORTH CAROLINA

01/30/04



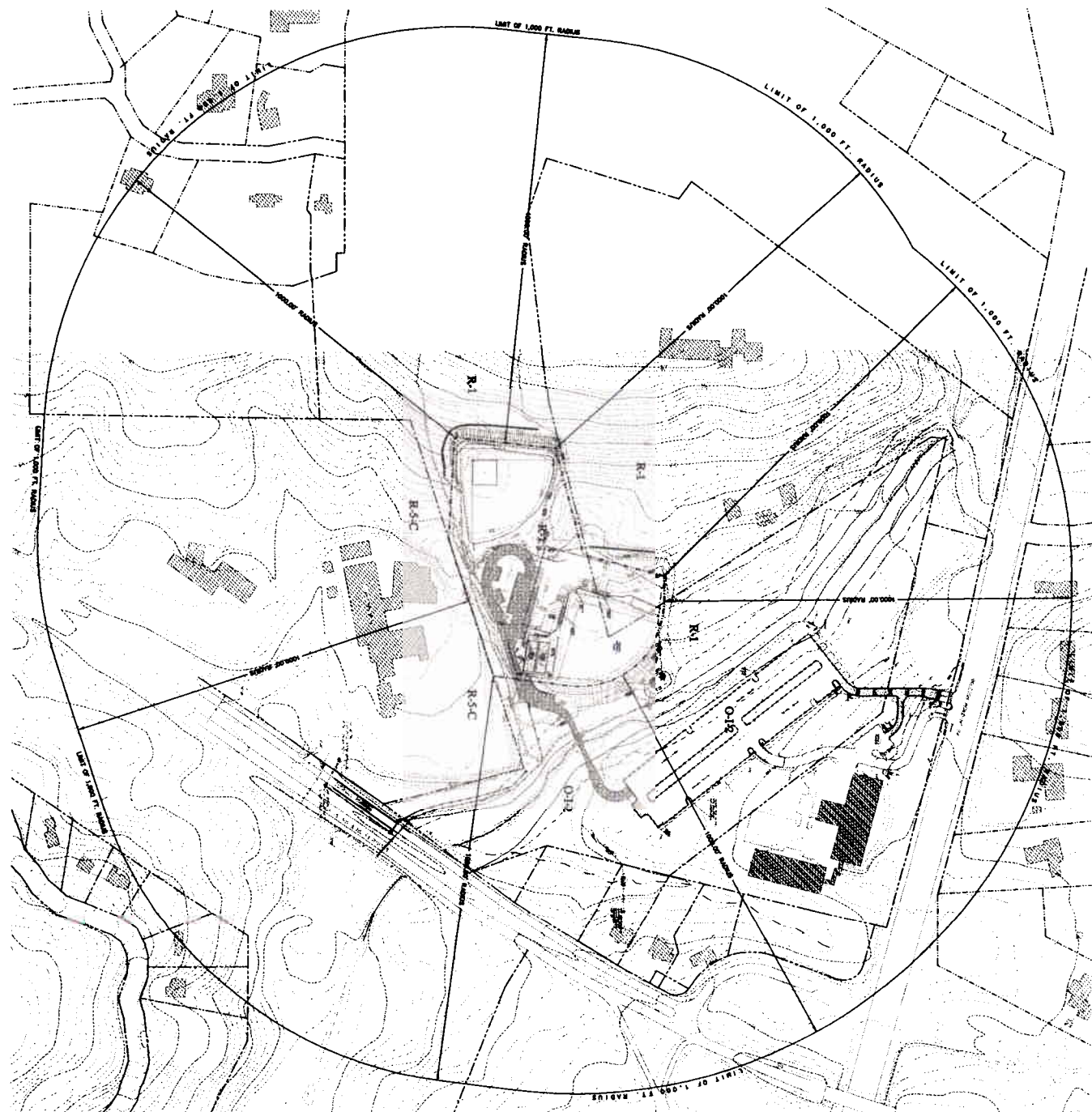
VICINITY MAP (NTS)

- INDEX OF DRAWINGS
 - COVER SHEET
 - LOCATION MAP
 - EXISTING CONDITIONS PLAN
 - SITE ANALYSIS-TOPOGRAPHY, SLOPES, HYDROLOGY
 - SITE ANALYSIS-DRAINAGE, SOIL TYPE, VEGETATION
 - CONCEPTUAL SITE PLAN
 - ARCHITECTURAL ELEVATION
- C0.1
 - SA-1
 - C1.0
 - SA-2
 - SA-3
 - C2.0
 - A1.0

ATTACHMENT 6



17



- LEGEND**
- 1" CONTOUR
 - - - 2" CONTOUR
 - 3" CONTOUR
 - 4" CONTOUR
 - 5" CONTOUR
 - 6" CONTOUR
 - 7" CONTOUR
 - 8" CONTOUR
 - 9" CONTOUR
 - 10" CONTOUR
 - 11" CONTOUR
 - 12" CONTOUR
 - 13" CONTOUR
 - 14" CONTOUR
 - 15" CONTOUR
 - 16" CONTOUR
 - 17" CONTOUR
 - 18" CONTOUR
 - 19" CONTOUR
 - 20" CONTOUR
 - 21" CONTOUR
 - 22" CONTOUR
 - 23" CONTOUR
 - 24" CONTOUR
 - 25" CONTOUR
 - 26" CONTOUR
 - 27" CONTOUR
 - 28" CONTOUR
 - 29" CONTOUR
 - 30" CONTOUR
 - 31" CONTOUR
 - 32" CONTOUR
 - 33" CONTOUR
 - 34" CONTOUR
 - 35" CONTOUR
 - 36" CONTOUR
 - 37" CONTOUR
 - 38" CONTOUR
 - 39" CONTOUR
 - 40" CONTOUR
 - 41" CONTOUR
 - 42" CONTOUR
 - 43" CONTOUR
 - 44" CONTOUR
 - 45" CONTOUR
 - 46" CONTOUR
 - 47" CONTOUR
 - 48" CONTOUR
 - 49" CONTOUR
 - 50" CONTOUR
 - 51" CONTOUR
 - 52" CONTOUR
 - 53" CONTOUR
 - 54" CONTOUR
 - 55" CONTOUR
 - 56" CONTOUR
 - 57" CONTOUR
 - 58" CONTOUR
 - 59" CONTOUR
 - 60" CONTOUR
 - 61" CONTOUR
 - 62" CONTOUR
 - 63" CONTOUR
 - 64" CONTOUR
 - 65" CONTOUR
 - 66" CONTOUR
 - 67" CONTOUR
 - 68" CONTOUR
 - 69" CONTOUR
 - 70" CONTOUR
 - 71" CONTOUR
 - 72" CONTOUR
 - 73" CONTOUR
 - 74" CONTOUR
 - 75" CONTOUR
 - 76" CONTOUR
 - 77" CONTOUR
 - 78" CONTOUR
 - 79" CONTOUR
 - 80" CONTOUR
 - 81" CONTOUR
 - 82" CONTOUR
 - 83" CONTOUR
 - 84" CONTOUR
 - 85" CONTOUR
 - 86" CONTOUR
 - 87" CONTOUR
 - 88" CONTOUR
 - 89" CONTOUR
 - 90" CONTOUR
 - 91" CONTOUR
 - 92" CONTOUR
 - 93" CONTOUR
 - 94" CONTOUR
 - 95" CONTOUR
 - 96" CONTOUR
 - 97" CONTOUR
 - 98" CONTOUR
 - 99" CONTOUR
 - 100" CONTOUR
 - 101" CONTOUR
 - 102" CONTOUR
 - 103" CONTOUR
 - 104" CONTOUR
 - 105" CONTOUR
 - 106" CONTOUR
 - 107" CONTOUR
 - 108" CONTOUR
 - 109" CONTOUR
 - 110" CONTOUR
 - 111" CONTOUR
 - 112" CONTOUR
 - 113" CONTOUR
 - 114" CONTOUR
 - 115" CONTOUR
 - 116" CONTOUR
 - 117" CONTOUR
 - 118" CONTOUR
 - 119" CONTOUR
 - 120" CONTOUR
 - 121" CONTOUR
 - 122" CONTOUR
 - 123" CONTOUR
 - 124" CONTOUR
 - 125" CONTOUR
 - 126" CONTOUR
 - 127" CONTOUR
 - 128" CONTOUR
 - 129" CONTOUR
 - 130" CONTOUR
 - 131" CONTOUR
 - 132" CONTOUR
 - 133" CONTOUR
 - 134" CONTOUR
 - 135" CONTOUR
 - 136" CONTOUR
 - 137" CONTOUR
 - 138" CONTOUR
 - 139" CONTOUR
 - 140" CONTOUR
 - 141" CONTOUR
 - 142" CONTOUR
 - 143" CONTOUR
 - 144" CONTOUR
 - 145" CONTOUR
 - 146" CONTOUR
 - 147" CONTOUR
 - 148" CONTOUR
 - 149" CONTOUR
 - 150" CONTOUR
 - 151" CONTOUR
 - 152" CONTOUR
 - 153" CONTOUR
 - 154" CONTOUR
 - 155" CONTOUR
 - 156" CONTOUR
 - 157" CONTOUR
 - 158" CONTOUR
 - 159" CONTOUR
 - 160" CONTOUR
 - 161" CONTOUR
 - 162" CONTOUR
 - 163" CONTOUR
 - 164" CONTOUR
 - 165" CONTOUR
 - 166" CONTOUR
 - 167" CONTOUR
 - 168" CONTOUR
 - 169" CONTOUR
 - 170" CONTOUR
 - 171" CONTOUR
 - 172" CONTOUR
 - 173" CONTOUR
 - 174" CONTOUR
 - 175" CONTOUR
 - 176" CONTOUR
 - 177" CONTOUR
 - 178" CONTOUR
 - 179" CONTOUR
 - 180" CONTOUR
 - 181" CONTOUR
 - 182" CONTOUR
 - 183" CONTOUR
 - 184" CONTOUR
 - 185" CONTOUR
 - 186" CONTOUR
 - 187" CONTOUR
 - 188" CONTOUR
 - 189" CONTOUR
 - 190" CONTOUR
 - 191" CONTOUR
 - 192" CONTOUR
 - 193" CONTOUR
 - 194" CONTOUR
 - 195" CONTOUR
 - 196" CONTOUR
 - 197" CONTOUR
 - 198" CONTOUR
 - 199" CONTOUR
 - 200" CONTOUR

LEGEND

1. CONSTRUCTION SHALL BE IN ACCORDANCE WITH THE LATEST EDITIONS OF THE INTERNATIONAL BUILDING CODES AND ALL APPLICABLE LOCAL ORDINANCES.

2. CONSTRUCTION SHALL BE IN ACCORDANCE WITH THE LATEST EDITIONS OF THE INTERNATIONAL MECHANICAL AND ELECTRICAL CODES AND ALL APPLICABLE LOCAL ORDINANCES.

3. CONSTRUCTION SHALL BE IN ACCORDANCE WITH THE LATEST EDITIONS OF THE INTERNATIONAL PLUMBING AND MECHANICAL CODES AND ALL APPLICABLE LOCAL ORDINANCES.

4. CONSTRUCTION SHALL BE IN ACCORDANCE WITH THE LATEST EDITIONS OF THE INTERNATIONAL FIRE AND SAFETY CODES AND ALL APPLICABLE LOCAL ORDINANCES.

5. CONSTRUCTION SHALL BE IN ACCORDANCE WITH THE LATEST EDITIONS OF THE INTERNATIONAL SAFETY CODES AND ALL APPLICABLE LOCAL ORDINANCES.

6. CONSTRUCTION SHALL BE IN ACCORDANCE WITH THE LATEST EDITIONS OF THE INTERNATIONAL ELECTRICAL CODES AND ALL APPLICABLE LOCAL ORDINANCES.

7. CONSTRUCTION SHALL BE IN ACCORDANCE WITH THE LATEST EDITIONS OF THE INTERNATIONAL CODES AND ALL APPLICABLE LOCAL ORDINANCES.

8. CONSTRUCTION SHALL BE IN ACCORDANCE WITH THE LATEST EDITIONS OF THE INTERNATIONAL CODES AND ALL APPLICABLE LOCAL ORDINANCES.

9. CONSTRUCTION SHALL BE IN ACCORDANCE WITH THE LATEST EDITIONS OF THE INTERNATIONAL CODES AND ALL APPLICABLE LOCAL ORDINANCES.

10. CONSTRUCTION SHALL BE IN ACCORDANCE WITH THE LATEST EDITIONS OF THE INTERNATIONAL CODES AND ALL APPLICABLE LOCAL ORDINANCES.

CONCEPT PLAN SUBMITTAL FORM

PROJECT NO. 0926

DATE 02/12/04

SHEET NO. 1

SA-1

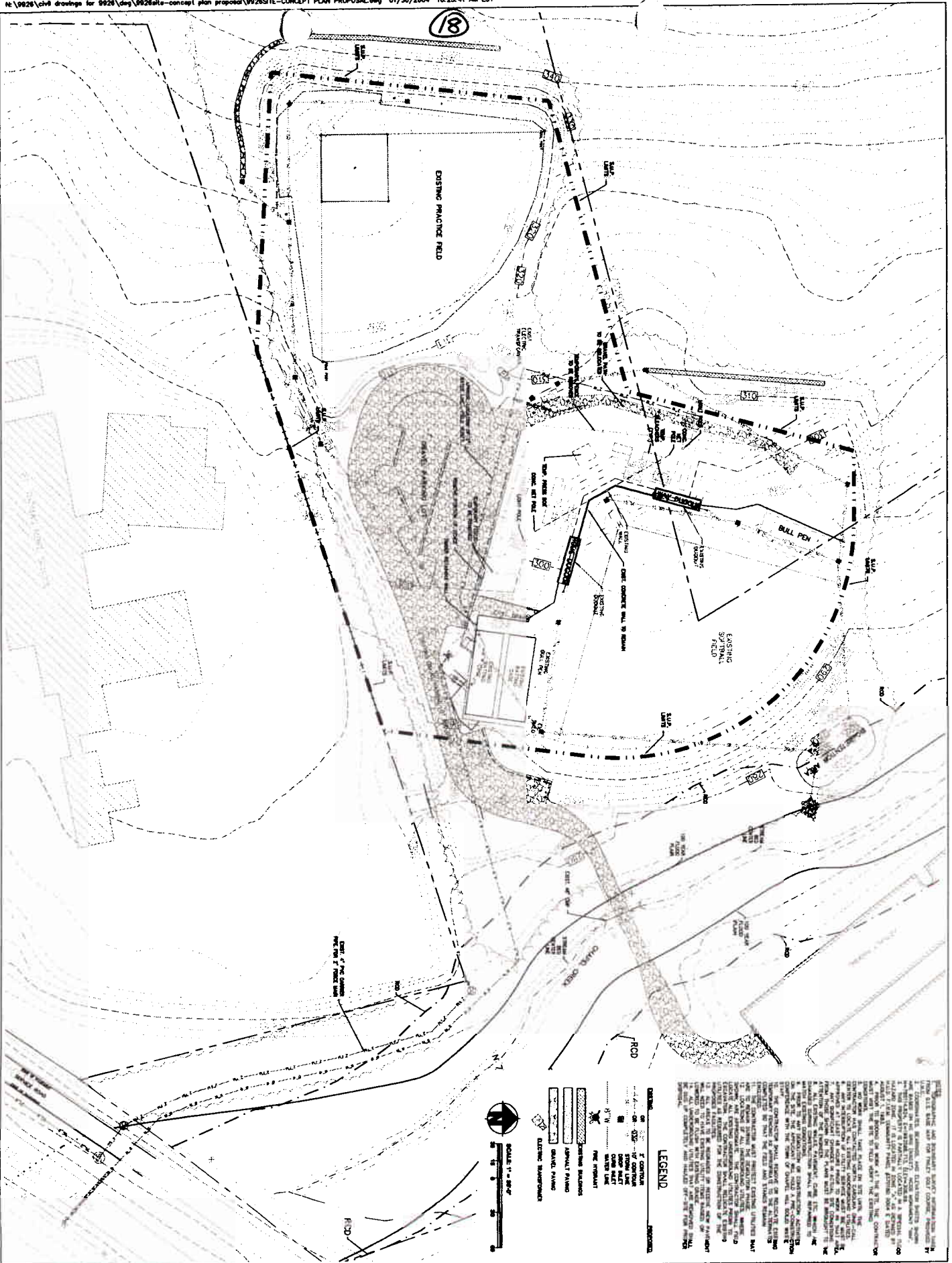
LOCATION MAP

UNC SOFTBALL FIELDS

CONCEPT PLAN SUBMITTAL

CHAPEL HILL, NORTH CAROLINA





CONCEPT PLAN SUBMITTAL 09/09/04

NO.	DATE	REVISION
1		
2		
3		
4		
5		
6		
7		
8		
9		
10		
11		
12		
13		
14		
15		
16		
17		
18		
19		
20		
21		
22		
23		
24		
25		
26		
27		
28		
29		
30		
31		
32		
33		
34		
35		
36		
37		
38		
39		
40		
41		
42		
43		
44		
45		
46		
47		
48		
49		
50		
51		
52		
53		
54		
55		
56		
57		
58		
59		
60		
61		
62		
63		
64		
65		
66		
67		
68		
69		
70		
71		
72		
73		
74		
75		
76		
77		
78		
79		
80		
81		
82		
83		
84		
85		
86		
87		
88		
89		
90		
91		
92		
93		
94		
95		
96		
97		
98		
99		
100		

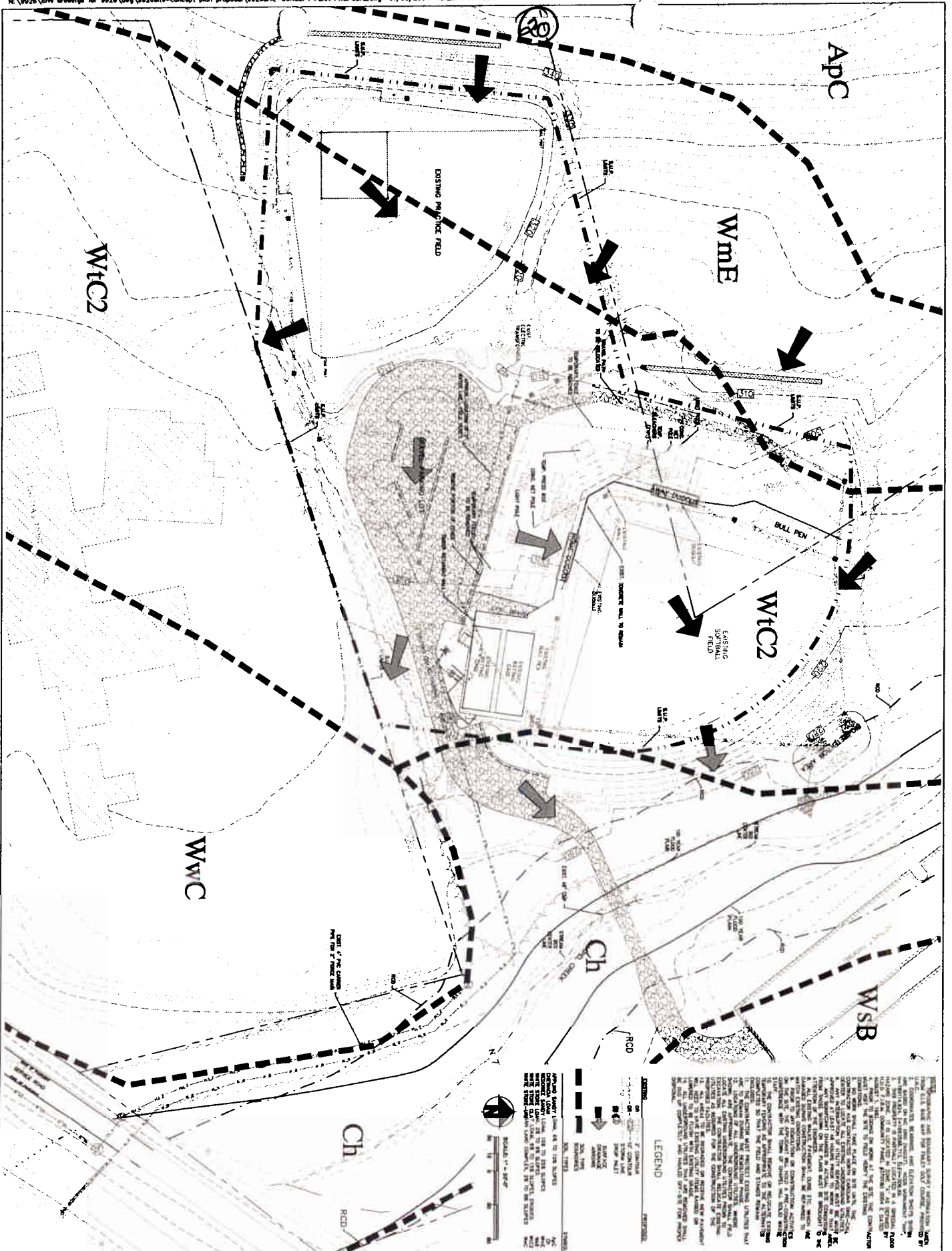
UNC SOFTBALL FIELDS

CONCEPT PLAN SUBMITTAL

CHAPEL HILL, NORTH CAROLINA



CORLEY REDFOOT ZACK, INC.
 ARCHITECTS • ENGINEERS • PLANNERS
 20 Box 3355, Chapel Hill, North Carolina 27514-9355



LEGEND

EXISTING
 PROPOSED

ROADS
 EXISTING ROAD
 PROPOSED ROAD

UTILITIES
 EXISTING UTILITY
 PROPOSED UTILITY

SOFTBALL FIELDS
 EXISTING SOFTBALL FIELD
 PROPOSED SOFTBALL FIELD

WATER
 EXISTING WATER
 PROPOSED WATER

SEWER
 EXISTING SEWER
 PROPOSED SEWER

GAS
 EXISTING GAS
 PROPOSED GAS

CONSTRUCTION AND INSTALLATION SHALL BE IN ACCORDANCE WITH THE STANDARD SPECIFICATIONS FOR PUBLIC WORKS, N.C. DEPARTMENT OF TRANSPORTATION, LATEST EDITION, AND THE STANDARD SPECIFICATIONS FOR CONSTRUCTION OF SEWERAGE AND SANITATION SYSTEMS, N.C. DEPARTMENT OF ENVIRONMENT AND NATURAL RESOURCES, LATEST EDITION. THE CONTRACTOR SHALL BE RESPONSIBLE FOR OBTAINING ALL NECESSARY PERMITS AND APPROVALS FROM THE APPROPRIATE AGENCIES. THE CONTRACTOR SHALL BE RESPONSIBLE FOR OBTAINING ALL NECESSARY PERMITS AND APPROVALS FROM THE APPROPRIATE AGENCIES. THE CONTRACTOR SHALL BE RESPONSIBLE FOR OBTAINING ALL NECESSARY PERMITS AND APPROVALS FROM THE APPROPRIATE AGENCIES.

UNC SOFTBALL FIELDS
 CONCEPT PLAN SUBMITTAL
 CHAPEL HILL, NORTH CAROLINA

CORLEY REDFOOT ZACK INC.
 ARCHITECTS - ENGINEERS - PLANNERS
 PO Box 3349, Chapel Hill, North Carolina 27517-3349

SA-3

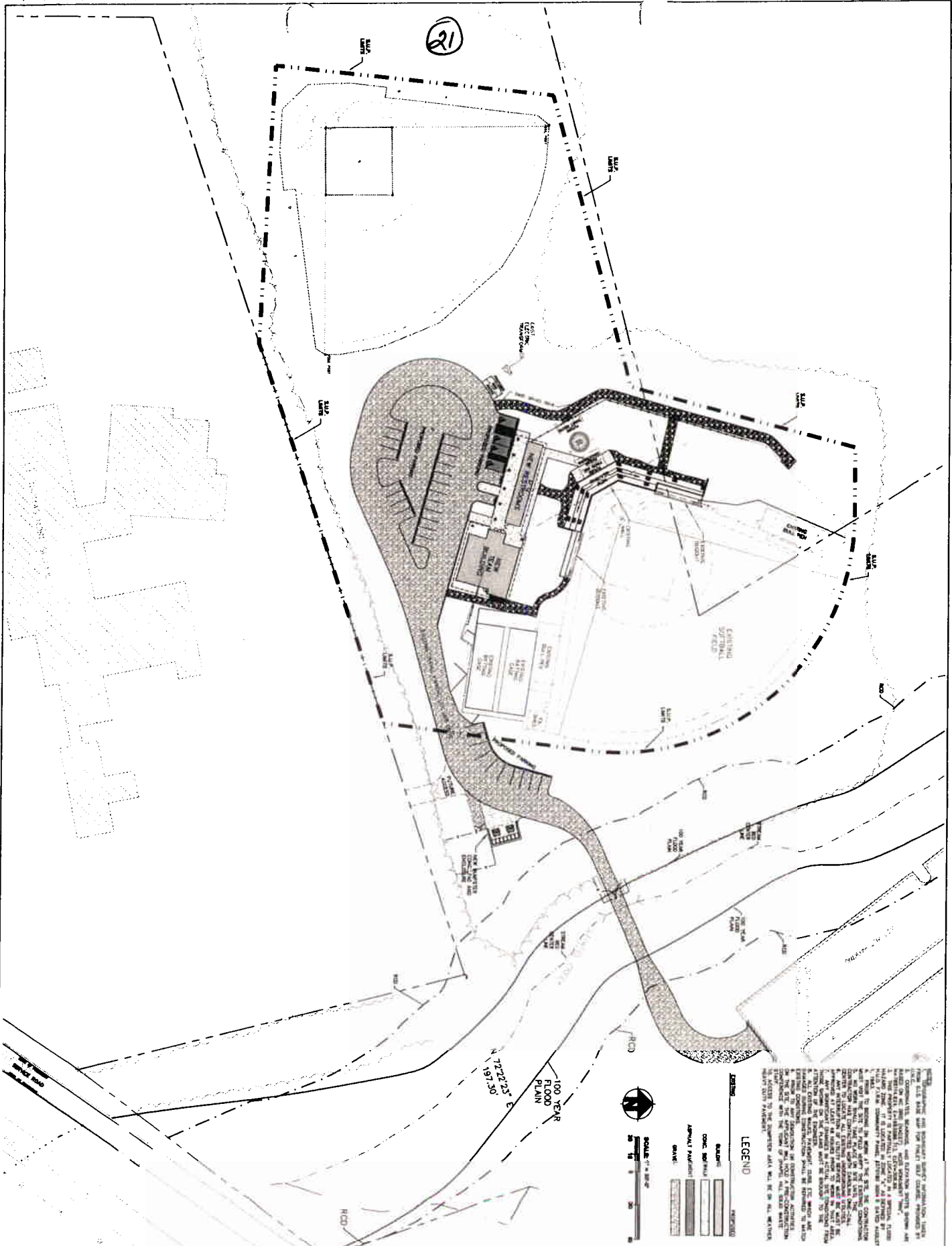
Project No. 9908

Sheet No. 01/004

DATE 01/30/04

CONCEPT PLAN SUBMITTAL NUMBER

21



SCALE: 1" = 40'

LEGEND

ASPHALT/CONCRETE
 CONC. SOFTBALL FIELD
 CONC. BASEBALL FIELD
 CONC. BUILDING
 CONC. STAIRS
 CONC. PARKING
 CONC. SIDEWALK
 CONC. DRIVEWAY
 CONC. WALL
 CONC. FOUNDATION
 CONC. FOOTING
 CONC. SLAB
 CONC. DECK
 CONC. STAIRCASE
 CONC. LANDING
 CONC. BALCONY
 CONC. TERRACE
 CONC. RAMP
 CONC. ELEVATION
 CONC. ELEVATION CHANGE
 CONC. ELEVATION CHANGE (STAIRCASE)
 CONC. ELEVATION CHANGE (RAMP)
 CONC. ELEVATION CHANGE (TERRACE)
 CONC. ELEVATION CHANGE (DECK)
 CONC. ELEVATION CHANGE (FOOTING)
 CONC. ELEVATION CHANGE (FOUNDATION)

UNC SOFTBALL FIELDS
CONCEPT PLAN SUBMITTAL

CHAPEL HILL, NORTH CAROLINA



CORLEY REDFOOT ZACK INC.
ARCHITECTS - ENGINEERS - PLANNERS
PO Box 3368, Chapel Hill, North Carolina 27515-9368

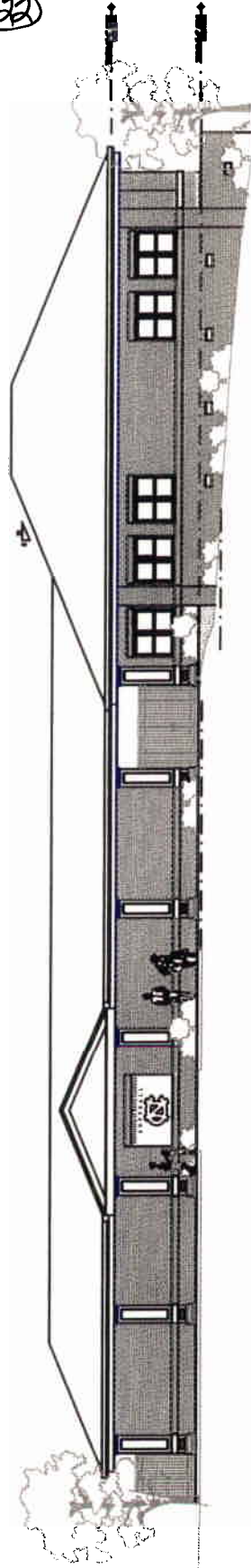
CONCEPT PLAN SUBMITTAL

C2.0

DATE: 01/30/04
DRAWN BY: M. W. WOOD
CHECKED BY: M. W. WOOD
PROJECT NO.: 9926



22



SCALE: 1" = 8'-0"