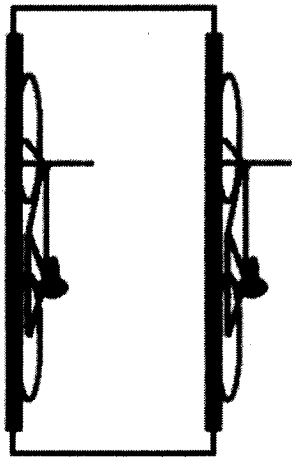
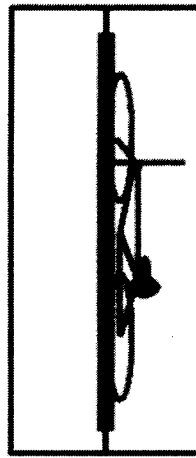


TRAFFIC SIGNAL LOOP DESIGN FOR BICYCLES

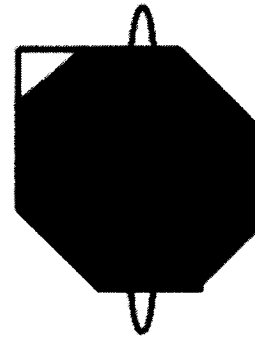
⑧



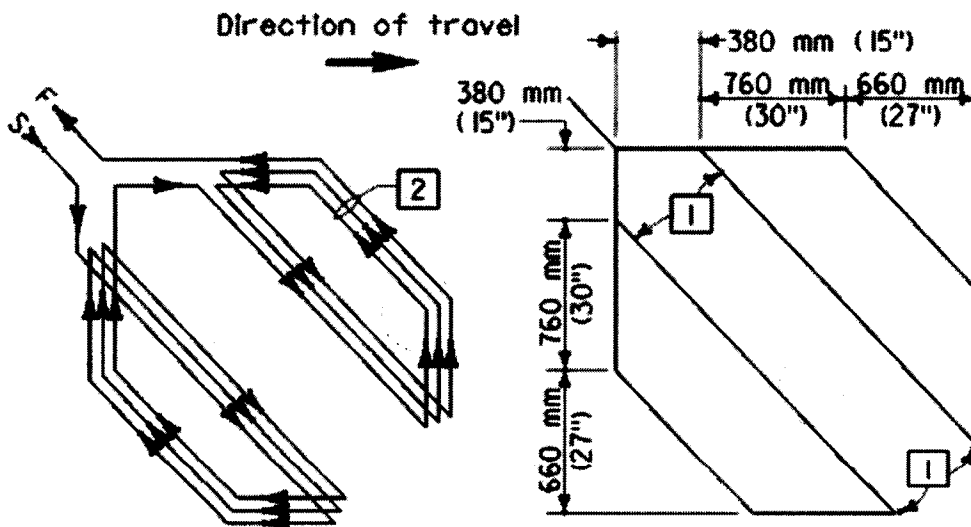
(a) Dipole



(b) Quadrupole



(c) Diagonal Quadrupole

WINDING DETAILSAWCUT DETAILTYPE D LOOP DETECTOR CONFIGURATION

## NOTES

- 1 Round corners of acute angle sawcuts to prevent damage to conductors.
- 2 Install 3 turns when only one Type D loop is on a sensor unit channel. Install 5 turns when one Type D loop is connected in series with 3 additional 1.8 m x 1.8 m (6' x 6') loops on a sensor unit channel.

Diagonal Quadrupole Pattern (Source: California DOT)