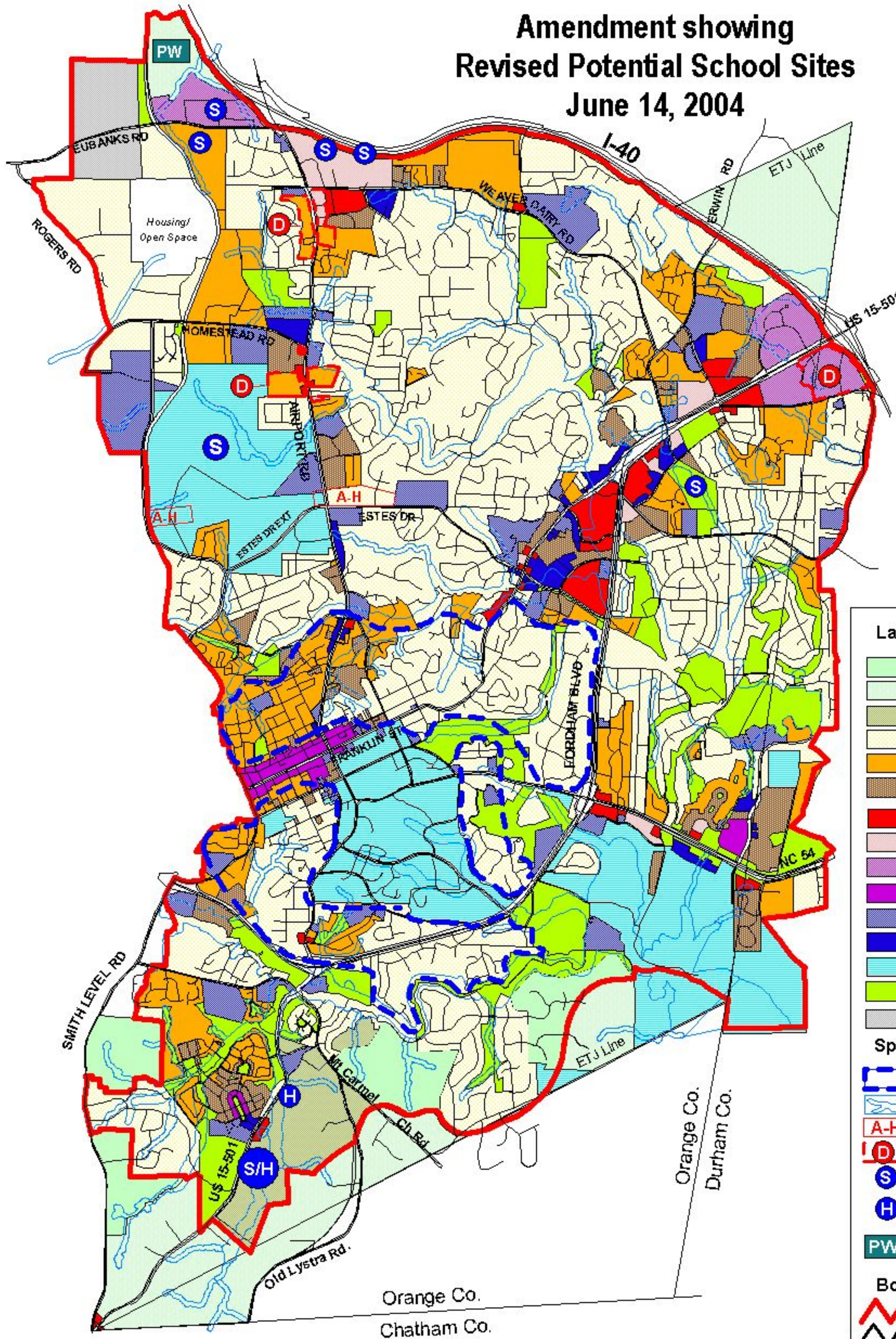


# Amendment showing Revised Potential School Sites June 14, 2004

Map 2



### Legend

- | Land Use Categories   |                                       |
|---|---------------------------------------|
| <span style="display: inline-block; width: 15px; height: 10px; background-color: #d9ead3; border: 1px solid black;"></span>                             | Rural Residential, 1 unit /5 ac.      |
| <span style="display: inline-block; width: 15px; height: 10px; background-color: #cfe2f3; border: 1px solid black;"></span>                             | Rural Residential, 1 unit /2 to 5 ac. |
| <span style="display: inline-block; width: 15px; height: 10px; background-color: #fce4d6; border: 1px solid black;"></span>                             | Low Residential, 1 unit /ac.          |
| <span style="display: inline-block; width: 15px; height: 10px; background-color: #fff2cc; border: 1px solid black;"></span>                             | Low Residential, 1-4 units /ac.       |
| <span style="display: inline-block; width: 15px; height: 10px; background-color: #f4cccc; border: 1px solid black;"></span>                             | Medium Residential, 4-8 units /ac.    |
| <span style="display: inline-block; width: 15px; height: 10px; background-color: #e06666; border: 1px solid black;"></span>                             | High Residential, 8-15 units /ac.     |
| <span style="display: inline-block; width: 15px; height: 10px; background-color: #ff0000; border: 1px solid black;"></span>                             | Commercial                            |
| <span style="display: inline-block; width: 15px; height: 10px; background-color: #f4cccc; border: 1px solid black;"></span>                             | Mixed Use, Office/Com. Emphasis       |
| <span style="display: inline-block; width: 15px; height: 10px; background-color: #f4cccc; border: 1px solid black;"></span>                             | Mixed Use, Office Emphasis            |
| <span style="display: inline-block; width: 15px; height: 10px; background-color: #990099; border: 1px solid black;"></span>                             | Town/Village Center                   |
| <span style="display: inline-block; width: 15px; height: 10px; background-color: #660066; border: 1px solid black;"></span>                             | Institutional                         |
| <span style="display: inline-block; width: 15px; height: 10px; background-color: #0000ff; border: 1px solid black;"></span>                             | Office                                |
| <span style="display: inline-block; width: 15px; height: 10px; background-color: #00bfff; border: 1px solid black;"></span>                             | University                            |
| <span style="display: inline-block; width: 15px; height: 10px; background-color: #92d050; border: 1px solid black;"></span>                             | Parks/Open Space                      |
| <span style="display: inline-block; width: 15px; height: 10px; background-color: #cccccc; border: 1px solid black;"></span>                             | Landfill Activities                   |
| Special Areas   |                                       |
| <span style="display: inline-block; width: 15px; height: 10px; border: 2px dashed blue;"></span>  | Residential Conservation Area         |
| <span style="display: inline-block; width: 15px; height: 10px; border: 2px dashed blue;"></span>  | Floodplain with RCD                   |
| <span style="display: inline-block; width: 15px; height: 10px; border: 1px solid red; color: red; font-weight: bold;">A-H</span>                        | A-H: Airport Hazard                   |
| <span style="display: inline-block; width: 15px; height: 10px; border: 2px solid red; border-radius: 50%; color: red; font-weight: bold;">D</span>      | Development Opportunity Area          |
| <span style="display: inline-block; width: 15px; height: 10px; border: 2px solid blue; border-radius: 50%; color: blue; font-weight: bold;">S</span>    | Potential School Site                 |
| <span style="display: inline-block; width: 15px; height: 10px; border: 2px solid blue; border-radius: 50%; color: blue; font-weight: bold;">H</span>    | Potential Affordable Housing Site     |
| <span style="display: inline-block; width: 15px; height: 10px; border: 2px solid green; border-radius: 50%; color: green; font-weight: bold;">PW</span> | Potential Public Works Facility Site  |
| Boundaries  |                                       |
| <span style="display: inline-block; width: 15px; height: 10px; border-top: 2px solid red;"></span>  | Urban Service Boundary                |
| <span style="display: inline-block; width: 15px; height: 10px; border-top: 2px solid black;"></span>  | City Limits, 1999                     |

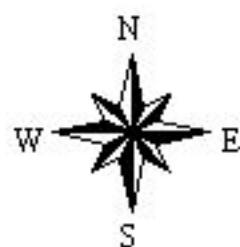


Figure 11  
**The Land Use Plan**  
**Comprehensive Plan**  
Chapel Hill, North Carolina  
Revised March 4, 2002