

**Amendment showing 9
Revised Potential School Sites
September 7, 2004**

**Map 3
Option B:
Site 1 Legion Rd
Included**

Legend

Land Use Categories

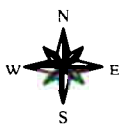
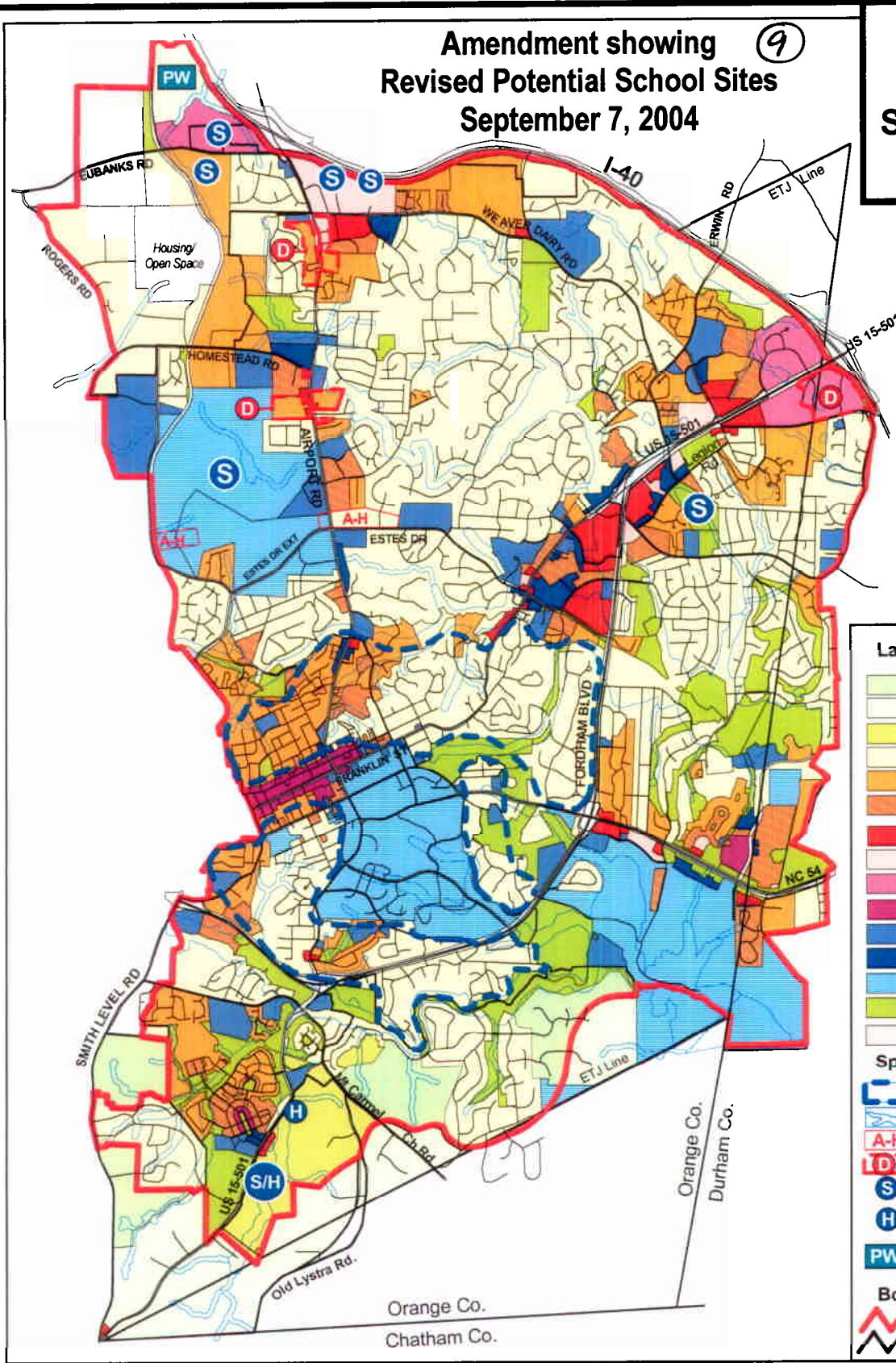
- Rural Residential, 1 unit /5 ac.
- Rural Residential, 1 unit /2 to 5 ac.
- Low Residential, 1 unit /ac.
- Low Residential, 1-4 units /ac.
- Medium Residential, 4-8 units /ac.
- High Residential, 8-15 units /ac.
- Commercial
- Mixed Use, Office/Com. Emphasis
- Mixed Use, Office Emphasis
- Town/Village Center
- Institutional
- Office
- University
- Parks/Open Space
- Landfill Activities

Special Areas

- Residential Conservation Area
- Floodplain with RCD
- A-H: Airport Hazard
- D: Development Opportunity Area
- S: Potential School Site
- H: Potential Affordable Housing Site
- PW: Potential Public Works Facility Site

Boundaries

- Urban Service Boundary
- City Limits, 1999



0.5 0 0.5 1 Miles

**Figure 11
The Land Use Plan
Comprehensive Plan
Chapel Hill, North Carolina
Revised September 7, 2004**