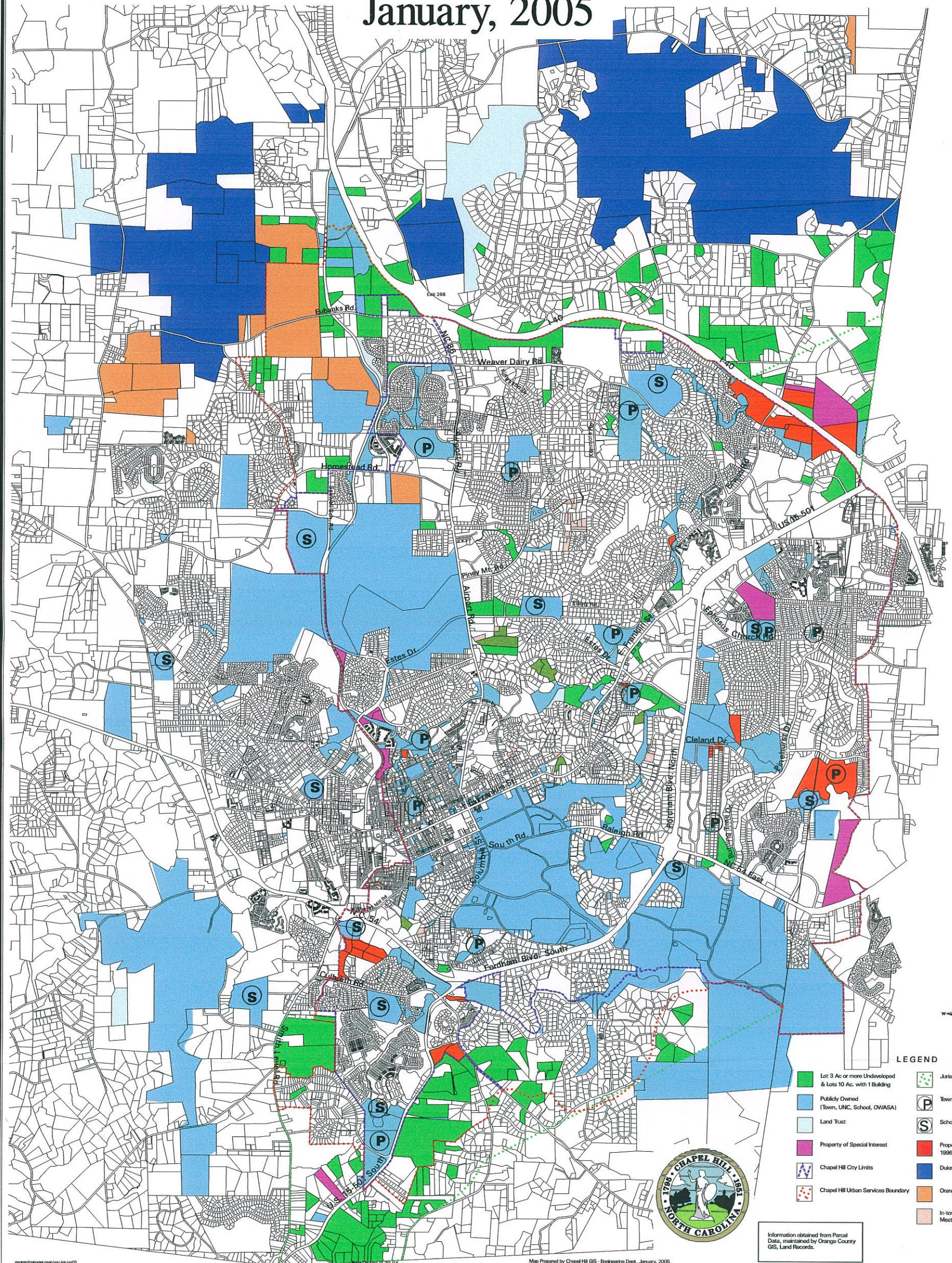


Context for Potential Open Space Land Acquisition

January, 2005



- LEGEND**
- Lot 3 Ac or more Undeveloped & Lots 10 Ac. with 1 Building
 - Publicly Owned (Town, UNC, School, OWASA)
 - Land Trust
 - Property of Special Interest
 - Chapel Hill City Limits
 - Chapel Hill Urban Services Boundary
 - Jurisdictional Limits
 - P Town Park Sites
 - S School Sites
 - Property Acquired Since 1996 Bond
 - Duke Univ. Property
 - Orange Co. Property
 - In-town Undeveloped Lots Not Meeting Current Standards



Information obtained from Parcel Data, maintained by Orange County GIS, Land Records.