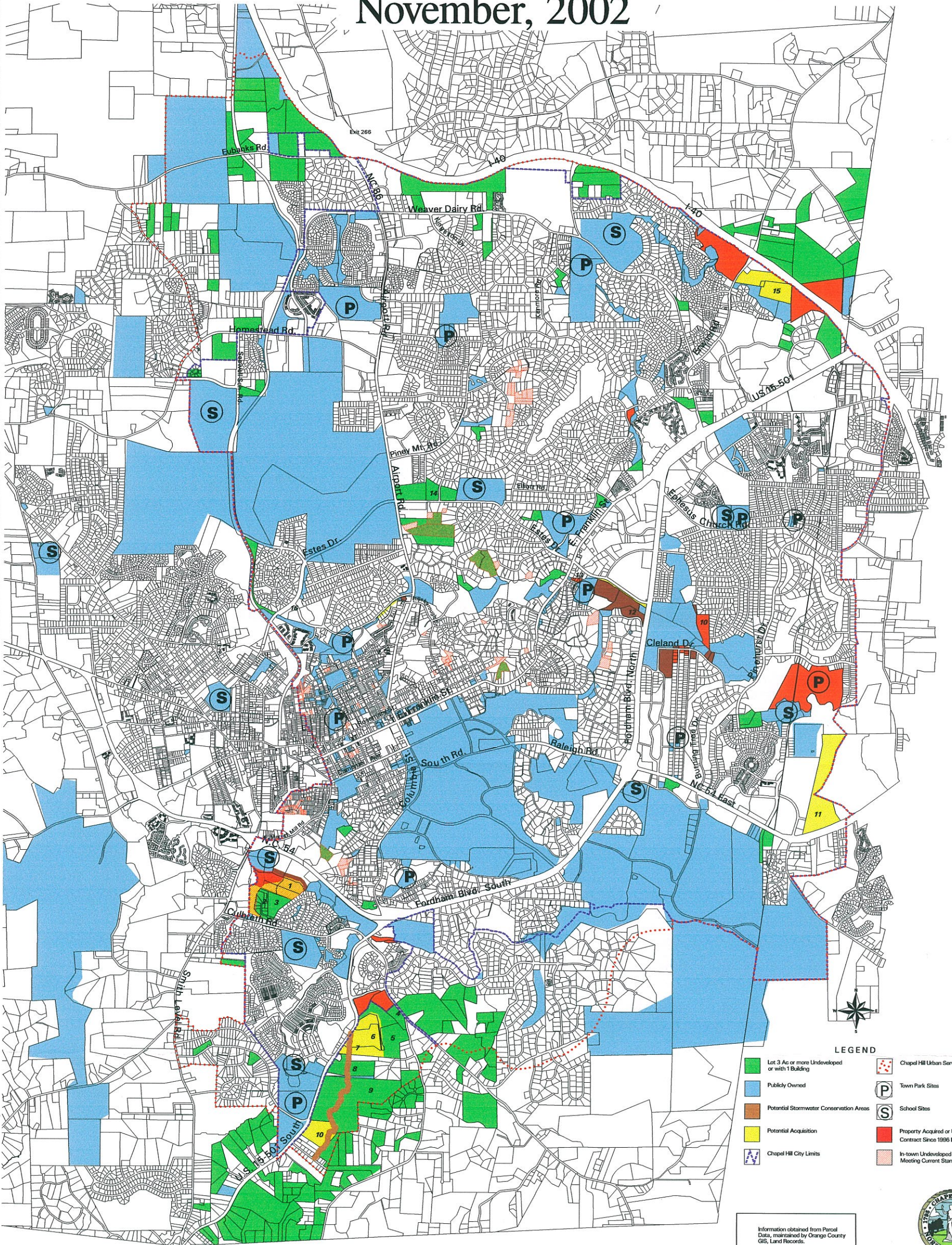


Context for Potential Open Space Land Acquisition

November, 2002



- LEGEND**
- Lot 3 Ac or more Undeveloped or with 1 Building
 - Publicly Owned
 - Potential Stormwater Conservation Areas
 - Potential Acquisition
 - Chapel Hill City Limits
 - Chapel Hill Urban Services Boundary
 - P Town Park Sites
 - S School Sites
 - Property Acquired or Under Contract Since 1996 Bond
 - In-town Undeveloped Lots Not Meeting Current Standards



Information obtained from Parcel Data, maintained by Orange County GIS, Land Records.

