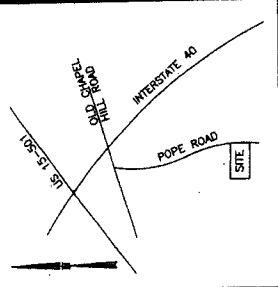


ATTACHMENT 20



SUMMARY INFORMATION

OWNER: MONTESSORI CHILDREN'S HOUSE
 4512 POPE ROAD
 DURHAM, NC 27707

ARCHITECT: INNOVATIVE DESIGN
 850 WEST MORGAN STREET
 DURHAM, NC 27703
 919-433-6303

ENGINEER: B&F CONSULTING, INC.
 2805 TREMONTY LANE
 RALEIGH, NC 27608
 919-815-0180

ENGR. SPECIALIST: LARKINS, INC.
 608 W. GARDNER
 RALEIGH, NC 27602
 919-787-1817

SURVEYOR: TRIANGLE SURVEYORS
 3715 UNIVERSITY DRIVE
 RALEIGH, NC 27707
 919-486-2828

PERMITS: 0.75 ACRES - ALL PERMANENT
 0.75 ACRES - ALL PERMANENT

EXISTING BUILDINGS: 18170 S.F.
 PROPOSED BUILDINGS: 6718 MIDDLE SCHOOL
 PROPOSED BALANCE: 17807 S.F. GYM + FINE ARTS

EXISTING PAVED: 0.36 ACRES
 PROPOSED PAVED: 0.75 ACRES

AGENCE: 0.75 ACRES - 84-2720
 D.B.: 1853 - 804
 T.A.L.: 481 - 47-0074
 LOCATION: DURHAM COUNTY
 TOWN OF CHAPEL HILL

EXISTING UTILITIES: 18170 S.F.
 PROPOSED UTILITIES: 6718 MIDDLE SCHOOL
 PROPOSED BALANCE: 17807 S.F. GYM + FINE ARTS

EXISTING PAVED: 0.36 ACRES
 PROPOSED PAVED: 0.75 ACRES

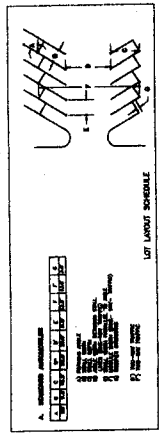
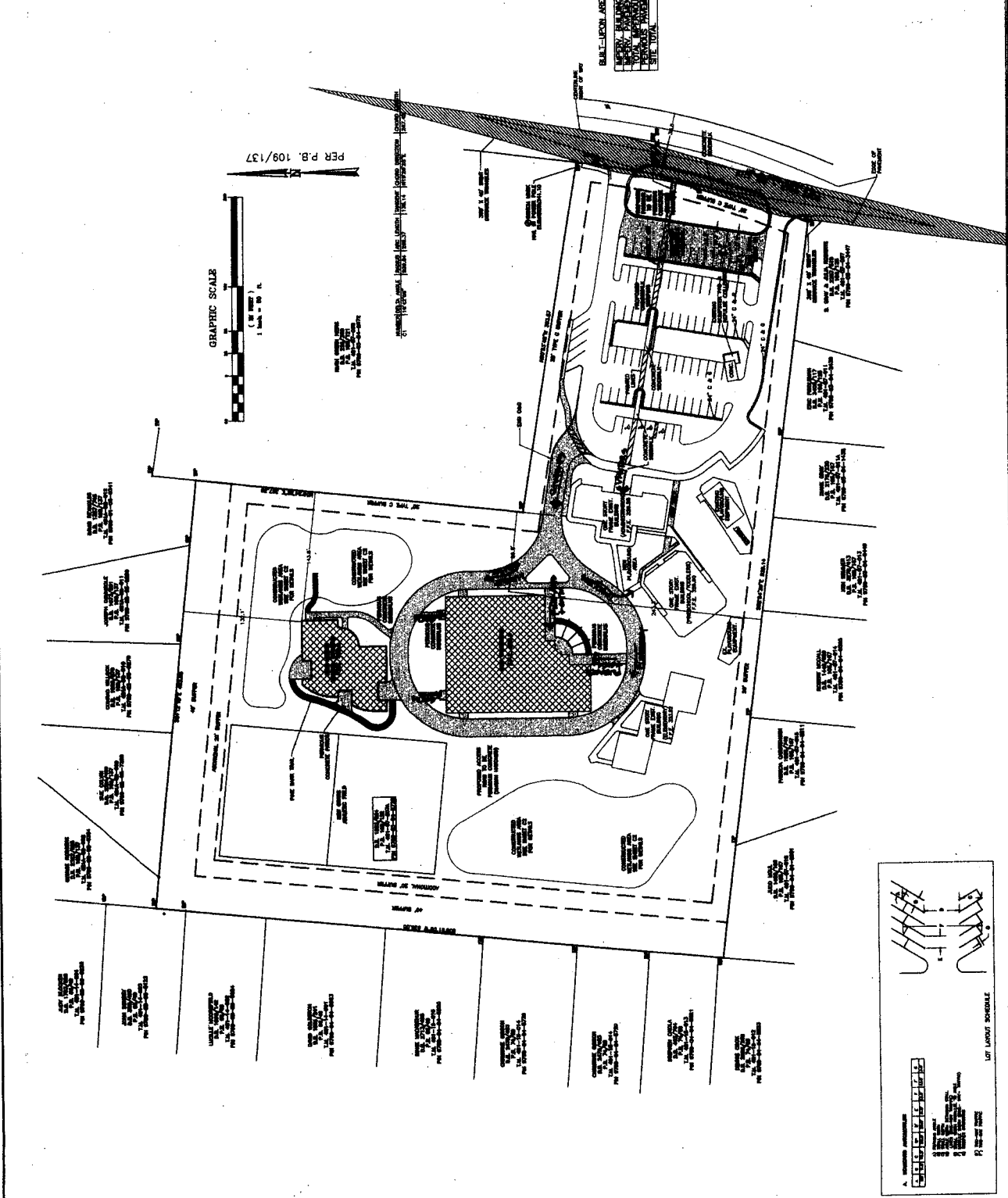
- SHEET DIRECTORY
- C 1 DETAILED SITE PLAN
 - C 2 DETAILED DRAINAGE AND GROUNDING PLAN
 - C 3 DETAILED UTILITY PLAN
 - C 4 DETAILED PLANNING PLAN
 - C 5 DETAILED UTILITY AND GROUNDING INFORMATION
 - C 6 EXISTING TOPOGRAPHY, SLOPES, SPREADS, TREES AND SOIL TYPES
 - C 7 EXISTING PATTERNS AND VEGETATION

UTILITIES CONTRACTED BY UNLCO SERVICE:
 THE HAMNER CABLE
 CITY OF DURHAM
 DUKE POWER
 VERIZON SOUTH, INC.
 BELLSOUTH
 MARK CORPORATION

ALL UNDERGROUND UTILITY LOCATIONS
 ON SURVEY ARE APPROXIMATE. UNLCO
 SERVICE 1-800-833-4008 SHOULD BE
 CONTACTED PRIOR TO ANY EXCAVATION.

SUBJECT PROPERTY LIES WITHIN THE
 PLANNING AREA OF THE 3700-3800 AND
 FROM PAVEMENT 3700-3800 AND
 FEBRUARY 2, 1988.

SUBJECT PROPERTY LIES WITHIN THE
 F/1-B PROTECTED AREA



INNOVATIVE DESIGN

850 W. MORRAN STREET, RALEIGH, NORTH CAROLINA 27603, 919/832-6303

PROJECT: MONTESSORI COMMUNITY SCHOOL

CHAPEL HILL, NORTH CAROLINA
Tax Map Info: Durham County Map #481, Block 7, Lot 7A

C-1a

PRELIMINARY
NOT FOR CONSTRUCTION

N80 53'48"W 393.67

SIP

326.5+
H.P.

BIKE RACK (4 TOTAL)
10 BIKES EACH RACK

332.27

12'x46' MODULAR TRAILER
FOR ADMIN USE DURING CONSTRUCTION

335.92

DROP-OFF ZONE

9'-0" 2'-0" 2'-0" 4'-0"

EXISTING ADMIN BUILDING

PLAY STRUCTURE

SWINGSET

EIP

WILLIAM MARLOW
D.B. 2179/230
P.B. 105/167
T.M. 481-07-011A
PIN 9799-03-04-1438

ERIC FIDDLEMAN
D.B. 3403/117
P.B. 106/125
T.M. 481-07-011
PIN 9799-03-04-2438

KEN BRUMER
D.B. 3278/413
P.B. 105/167
T.M. 481-07-013
PIN 9799-03-04-0449

PARTIAL SITE PLAN SCALE: 1" = 50'

V01

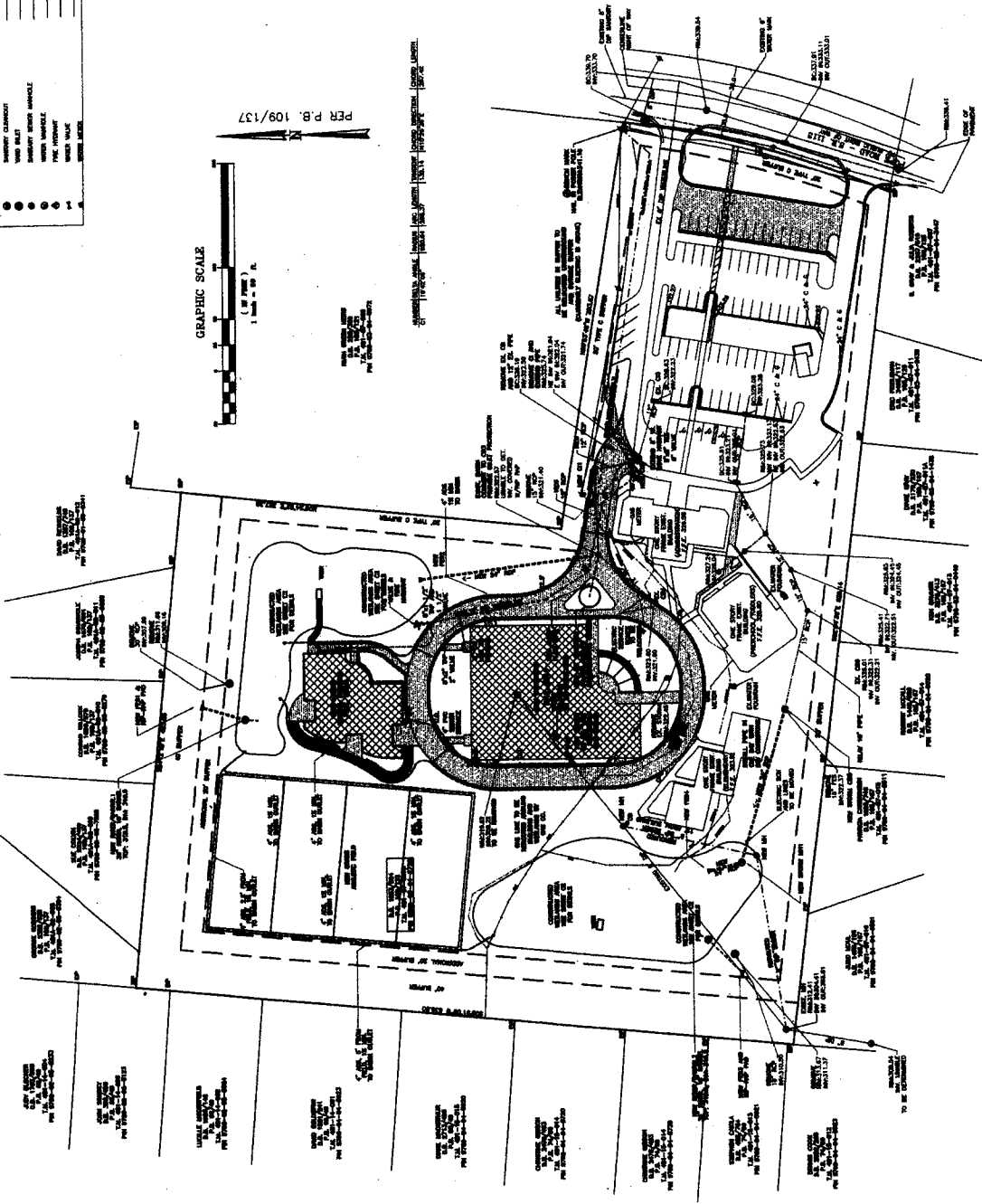
HOME PLACE TRUST

"E 828.14

- | LEGEND | |
|--------|----------------------|
| 1 | 3/4" DIA. WATER MAIN |
| 2 | 6" DIA. WATER MAIN |
| 3 | 12" DIA. WATER MAIN |
| 4 | 18" DIA. WATER MAIN |
| 5 | 24" DIA. WATER MAIN |
| 6 | 30" DIA. WATER MAIN |
| 7 | 36" DIA. WATER MAIN |
| 8 | 42" DIA. WATER MAIN |
| 9 | 48" DIA. WATER MAIN |
| 10 | 54" DIA. WATER MAIN |
| 11 | 60" DIA. WATER MAIN |
| 12 | 66" DIA. WATER MAIN |
| 13 | 72" DIA. WATER MAIN |
| 14 | 78" DIA. WATER MAIN |
| 15 | 84" DIA. WATER MAIN |
| 16 | 90" DIA. WATER MAIN |
| 17 | 96" DIA. WATER MAIN |
| 18 | 102" DIA. WATER MAIN |
| 19 | 108" DIA. WATER MAIN |
| 20 | 114" DIA. WATER MAIN |
| 21 | 120" DIA. WATER MAIN |
| 22 | 126" DIA. WATER MAIN |
| 23 | 132" DIA. WATER MAIN |
| 24 | 138" DIA. WATER MAIN |
| 25 | 144" DIA. WATER MAIN |
| 26 | 150" DIA. WATER MAIN |
| 27 | 156" DIA. WATER MAIN |
| 28 | 162" DIA. WATER MAIN |
| 29 | 168" DIA. WATER MAIN |
| 30 | 174" DIA. WATER MAIN |
| 31 | 180" DIA. WATER MAIN |
| 32 | 186" DIA. WATER MAIN |
| 33 | 192" DIA. WATER MAIN |
| 34 | 198" DIA. WATER MAIN |
| 35 | 204" DIA. WATER MAIN |
| 36 | 210" DIA. WATER MAIN |
| 37 | 216" DIA. WATER MAIN |
| 38 | 222" DIA. WATER MAIN |
| 39 | 228" DIA. WATER MAIN |
| 40 | 234" DIA. WATER MAIN |
| 41 | 240" DIA. WATER MAIN |
| 42 | 246" DIA. WATER MAIN |
| 43 | 252" DIA. WATER MAIN |
| 44 | 258" DIA. WATER MAIN |
| 45 | 264" DIA. WATER MAIN |
| 46 | 270" DIA. WATER MAIN |
| 47 | 276" DIA. WATER MAIN |
| 48 | 282" DIA. WATER MAIN |
| 49 | 288" DIA. WATER MAIN |
| 50 | 294" DIA. WATER MAIN |
| 51 | 300" DIA. WATER MAIN |
| 52 | 306" DIA. WATER MAIN |
| 53 | 312" DIA. WATER MAIN |
| 54 | 318" DIA. WATER MAIN |
| 55 | 324" DIA. WATER MAIN |
| 56 | 330" DIA. WATER MAIN |
| 57 | 336" DIA. WATER MAIN |
| 58 | 342" DIA. WATER MAIN |
| 59 | 348" DIA. WATER MAIN |
| 60 | 354" DIA. WATER MAIN |
| 61 | 360" DIA. WATER MAIN |
| 62 | 366" DIA. WATER MAIN |
| 63 | 372" DIA. WATER MAIN |
| 64 | 378" DIA. WATER MAIN |
| 65 | 384" DIA. WATER MAIN |
| 66 | 390" DIA. WATER MAIN |
| 67 | 396" DIA. WATER MAIN |
| 68 | 402" DIA. WATER MAIN |
| 69 | 408" DIA. WATER MAIN |
| 70 | 414" DIA. WATER MAIN |
| 71 | 420" DIA. WATER MAIN |
| 72 | 426" DIA. WATER MAIN |
| 73 | 432" DIA. WATER MAIN |
| 74 | 438" DIA. WATER MAIN |
| 75 | 444" DIA. WATER MAIN |
| 76 | 450" DIA. WATER MAIN |
| 77 | 456" DIA. WATER MAIN |
| 78 | 462" DIA. WATER MAIN |
| 79 | 468" DIA. WATER MAIN |
| 80 | 474" DIA. WATER MAIN |
| 81 | 480" DIA. WATER MAIN |
| 82 | 486" DIA. WATER MAIN |
| 83 | 492" DIA. WATER MAIN |
| 84 | 498" DIA. WATER MAIN |
| 85 | 504" DIA. WATER MAIN |
| 86 | 510" DIA. WATER MAIN |
| 87 | 516" DIA. WATER MAIN |
| 88 | 522" DIA. WATER MAIN |
| 89 | 528" DIA. WATER MAIN |
| 90 | 534" DIA. WATER MAIN |
| 91 | 540" DIA. WATER MAIN |
| 92 | 546" DIA. WATER MAIN |
| 93 | 552" DIA. WATER MAIN |
| 94 | 558" DIA. WATER MAIN |
| 95 | 564" DIA. WATER MAIN |
| 96 | 570" DIA. WATER MAIN |
| 97 | 576" DIA. WATER MAIN |
| 98 | 582" DIA. WATER MAIN |
| 99 | 588" DIA. WATER MAIN |
| 100 | 594" DIA. WATER MAIN |
| 101 | 600" DIA. WATER MAIN |
| 102 | 606" DIA. WATER MAIN |
| 103 | 612" DIA. WATER MAIN |
| 104 | 618" DIA. WATER MAIN |
| 105 | 624" DIA. WATER MAIN |
| 106 | 630" DIA. WATER MAIN |
| 107 | 636" DIA. WATER MAIN |
| 108 | 642" DIA. WATER MAIN |
| 109 | 648" DIA. WATER MAIN |
| 110 | 654" DIA. WATER MAIN |
| 111 | 660" DIA. WATER MAIN |
| 112 | 666" DIA. WATER MAIN |
| 113 | 672" DIA. WATER MAIN |
| 114 | 678" DIA. WATER MAIN |
| 115 | 684" DIA. WATER MAIN |
| 116 | 690" DIA. WATER MAIN |
| 117 | 696" DIA. WATER MAIN |
| 118 | 702" DIA. WATER MAIN |
| 119 | 708" DIA. WATER MAIN |
| 120 | 714" DIA. WATER MAIN |



PER P.B. 109/137



UTILITY NOTES
 ALL UTILITIES TO BE LOCATED UNDERGROUND AND MARKED WITH RED FLUORESCENT SURVEYING TAPE. ALL UTILITIES TO BE LOCATED UNDERGROUND AND MARKED WITH RED FLUORESCENT SURVEYING TAPE. ALL UTILITIES TO BE LOCATED UNDERGROUND AND MARKED WITH RED FLUORESCENT SURVEYING TAPE.

SITE NOTES
 UTILITIES CONDUCTED BY WILCO SERVICE: TIME WARNER CABLE, CITY OF DURHAM, PUBLIC SERVICE NC ENERGY, WECOM SOUTH, INC., CENTRAL LOCATING SERVICE, LTD, BARR CORPORATION.

ALL UNDERGROUND UTILITY LOCATIONS ON SURVEY ARE APPROXIMATE AND SHALL BE CONFIRMED PRIOR TO ANY EXCAVATION.

SUBJECT PROPERTY LIES WITHIN ZONE "X" OUTSIDE THE 500 YEAR FLOOD AREA PER FIRM PANEL 37083201405 AND FIRM PANEL 37083201405, BOTH DATED FEBRUARY 2, 1998.

SUBJECT PROPERTY LIES WITHIN THE 7/4-A-8 PROTECTED AREA WATERSHED.

Plant List for Retention Buffer for Sheds and Wetland Conditions (Zone 4)

Plant Name	Quantity	Notes
...

Plant List for Montessori/Stormwater Basins

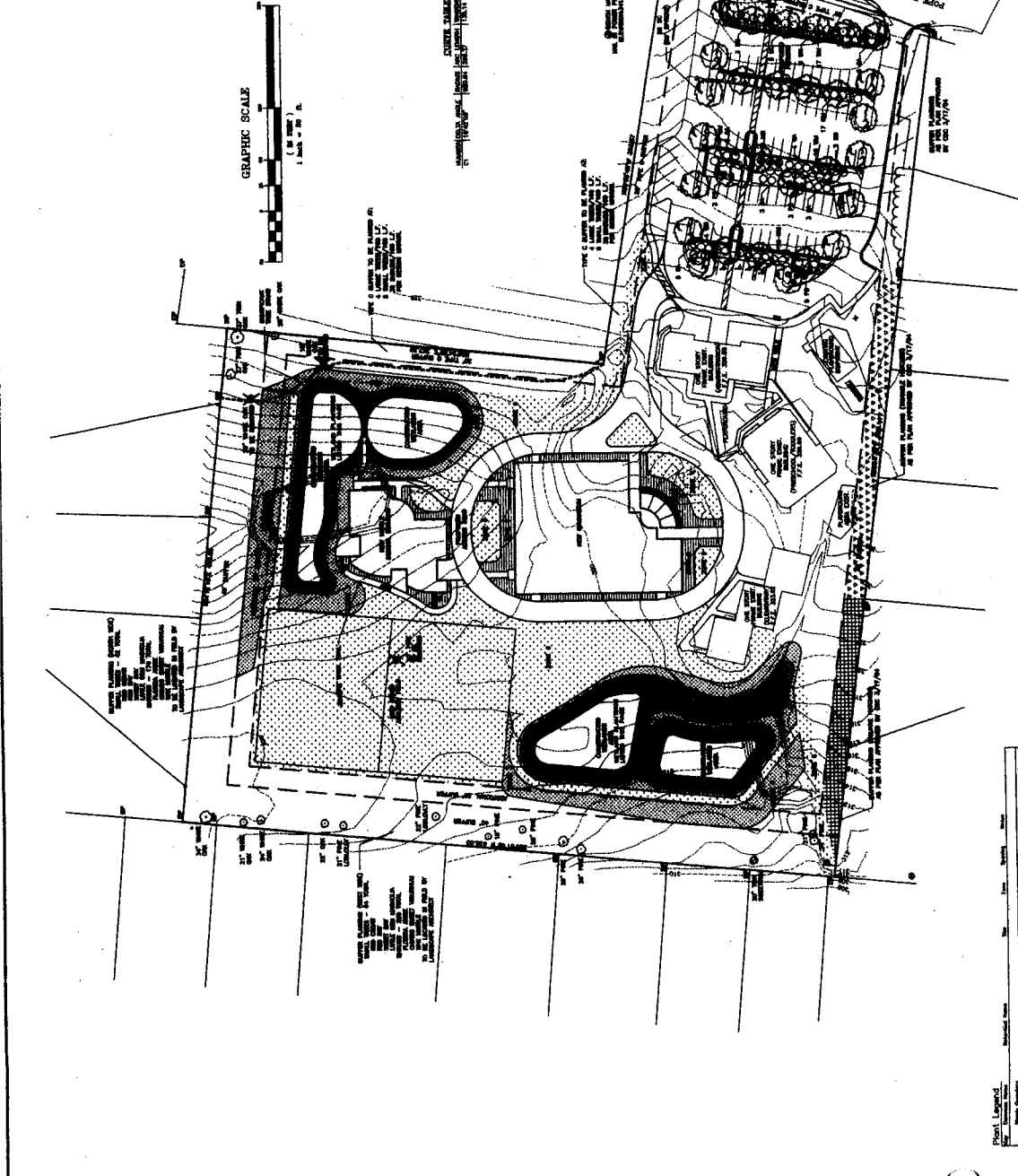
Plant Name	Quantity	Notes
...

- NOTES:
 1. PLAN IS FOR PLANTING PURPOSES ONLY. FOR INFORMATION RELATED TO GRADING, WALLS, ETC., REFER TO THE SITE AND GRADING PLANS.
 2. ALL GRASS IS TO BE CONFEDERATE FESCUE (ZONE 6).
 3. ALL PLANTS AND PLANTING PROCEDURES SHALL MEET OR EXCEED A.A.N. STANDARDS AS SET FORTH IN "AMERICAN HANDBOOK FOR NURSERY STOCK" 1986 OR LATEST EDITION.
 4. ALL SHRUB AND PLANT BEDS SHALL BE MULCHED WITH 4" CLEAN PIPE STRAW.
 5. ALL TREES AND SHRUBS SHALL BE FULLY BRANCHED PLANTS WHICH ARE CHARACTERISTIC OF THE SPECIES.
 6. TOPSOIL SHALL BE 2" AT LEAST 4" IN LAWN AREAS AND 6" IN SHRUB AND GROUNDCOVER BEDS.

- TREE PROTECTION NOTES:
 1. TREES TO BE PROTECTED BY CONSTRUCTION SHALL BE STAKED CLEANLY WITH A PRUNING TOOL.
 2. DO NOT DISPOSE OF ANY CHEMICALS OR REMOVE SOIL OUTSIDE THE LIMIT OF WORK.
 3. WHEN INSTALLING NEW LANDSCAPE PLANTS, DO NOT DRIVE EQUIPMENT OR LOADS OVER EXISTING TREES. THE CRITICAL ROOT ZONE OF EXISTING TREES.
 4. A PRE-CONSTRUCTION CONFERENCE MUST BE HELD WITH THE TOWN'S URBAN FORESTER BEFORE ANY SITE WORK BEGINS.
 5. A LANDSCAPE PROTECTION SUPERVISOR WHO IS REGISTERED WITH THE STATE OF NORTH CAROLINA SHALL BE ON SITE AT ALL TIMES WHEN THE FOLLOWING ACTIVITIES ARE TAKING PLACE: CLEARING, GRADING, EXCAVATION, INSTALLATION AND REMOVAL OF TREE PROTECTION, TRANSPORTING AND PLACEMENT OF CONSTRUCTION MATERIALS AND EQUIPMENT.
 SEE LANDSCAPE MAINTENANCE DOCUMENTATION
 SEE LANDSCAPE MANUAL

- SITE NOTES:
 UTILITIES CONTACTED BY UGCOO SERVICE:
 THE WARNER CABLE
 CITY OF DURHAM
 PUBLIC SERVICE NC ENERGY
 VERICON SOUTH, INC.
 CENTRAL LOCATING SERVICE, LTD
 MARK CORPORATION
 ALL UNDERGROUND UTILITY LOCATIONS ON SURVEY ARE APPROXIMATE. UGCOO SERVICE SHALL BE CONTACTED PRIOR TO ANY EXCAVATION.
 SUBJECT PROPERTY LIES WITHIN ZONE 7* OUTSIDE THE 500 YEAR FLOOD AREA PER FIRM PANEL 3706300145C AND 3706300145D, BOTH DATED FEBRUARY 2, 1982.
 SUBJECT PROPERTY LIES WITHIN THE 77-8 PROTECTED AREA WATERSHED.

PER P.B. 109/137



Plant Legend

Symbol	Plant Name	Quantity
...

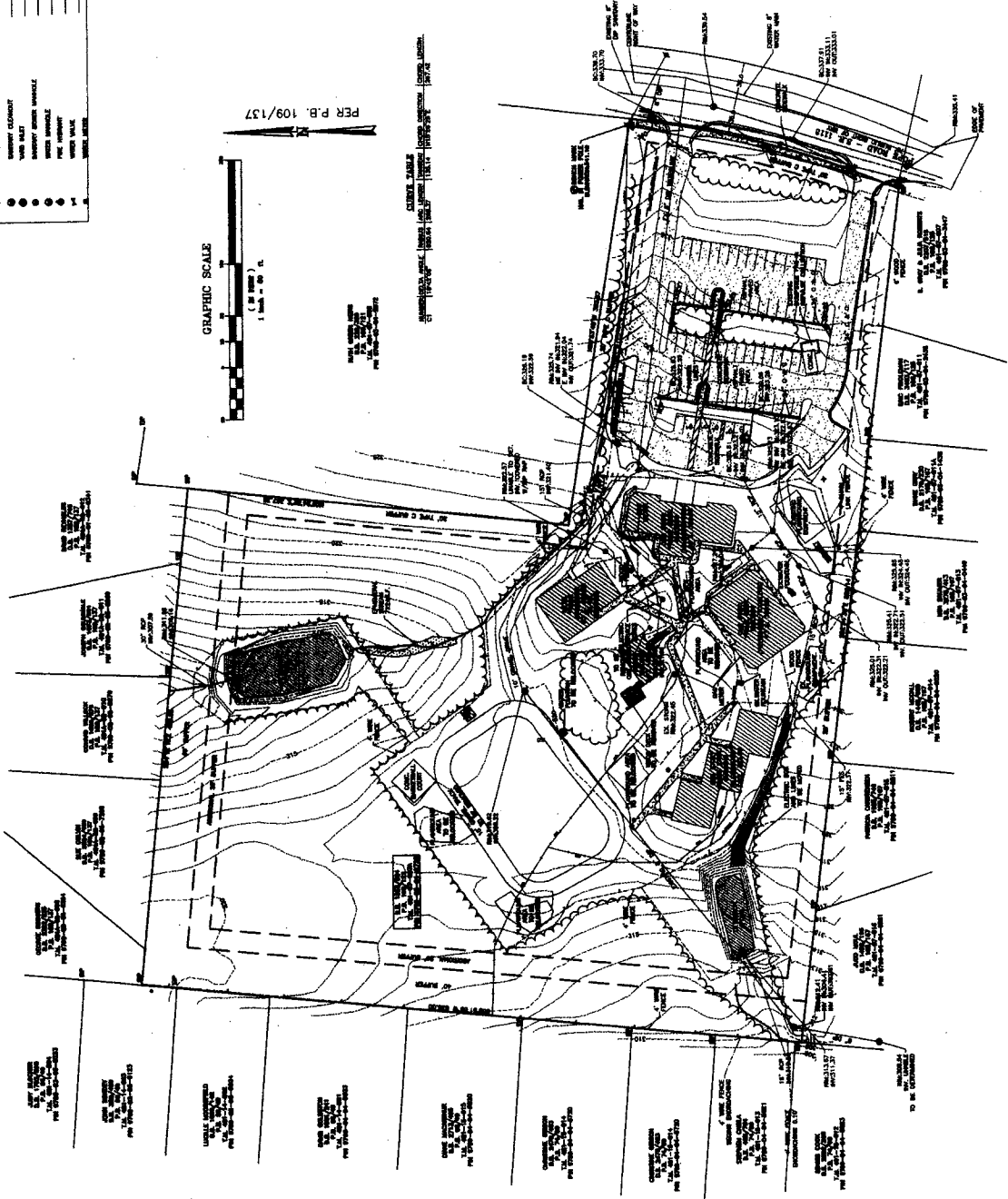
Plant Legend

Symbol	Plant Name	Quantity
...

SYMBOL	DESCRIPTION
1	EXISTING WALK
2	EXISTING DRIVE
3	EXISTING SIDEWALK
4	EXISTING DRIVEWAY
5	EXISTING DRIVEWAY
6	EXISTING DRIVEWAY
7	EXISTING DRIVEWAY
8	EXISTING DRIVEWAY
9	EXISTING DRIVEWAY
10	EXISTING DRIVEWAY
11	EXISTING DRIVEWAY
12	EXISTING DRIVEWAY
13	EXISTING DRIVEWAY
14	EXISTING DRIVEWAY
15	EXISTING DRIVEWAY
16	EXISTING DRIVEWAY
17	EXISTING DRIVEWAY
18	EXISTING DRIVEWAY
19	EXISTING DRIVEWAY
20	EXISTING DRIVEWAY
21	EXISTING DRIVEWAY
22	EXISTING DRIVEWAY
23	EXISTING DRIVEWAY
24	EXISTING DRIVEWAY
25	EXISTING DRIVEWAY
26	EXISTING DRIVEWAY
27	EXISTING DRIVEWAY
28	EXISTING DRIVEWAY
29	EXISTING DRIVEWAY
30	EXISTING DRIVEWAY
31	EXISTING DRIVEWAY
32	EXISTING DRIVEWAY
33	EXISTING DRIVEWAY
34	EXISTING DRIVEWAY
35	EXISTING DRIVEWAY
36	EXISTING DRIVEWAY
37	EXISTING DRIVEWAY
38	EXISTING DRIVEWAY
39	EXISTING DRIVEWAY
40	EXISTING DRIVEWAY
41	EXISTING DRIVEWAY
42	EXISTING DRIVEWAY
43	EXISTING DRIVEWAY
44	EXISTING DRIVEWAY
45	EXISTING DRIVEWAY
46	EXISTING DRIVEWAY
47	EXISTING DRIVEWAY
48	EXISTING DRIVEWAY
49	EXISTING DRIVEWAY
50	EXISTING DRIVEWAY

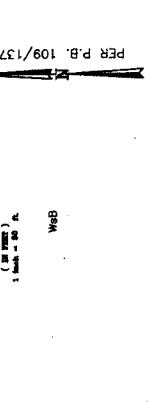
GRAPHIC SCALE
1" = 50' FT.

PER P.B. 109/137



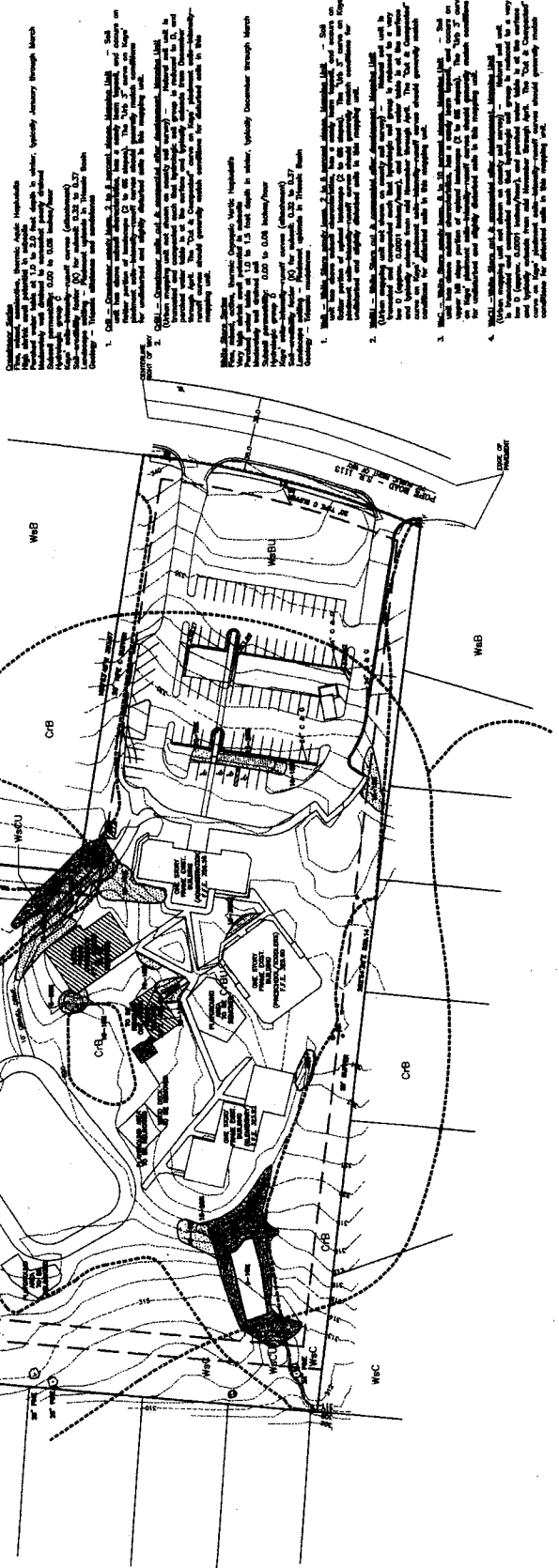
SITE NOTES
 UTILITIES CONTACTED BY ULDOO SERVICE:
 TIME WARNER CABLE
 CITY OF DURHAM
 PUBLIC SERVICE INC ENERGY
 VERIZON SOUTH, INC.
 SELLERSON LOCATING SERVICE, LTD
 MARK CORPORATION
 ALL UNDERGROUND UTILITY LOCATIONS ON SURVEY ARE APPROXIMATE. ULDOO SERVICE IS NOT RESPONSIBLE FOR THE ACCURACY OF UTILITY LOCATIONS SHOWN. CONTACTED PRIOR TO ANY EXCAVATION.
 SUBJECT PROPERTY IS WITHIN THE 7/2-8 PROTECTED AREA INDICATED PER PLAN SHEET 01/001-0001 AND PER PLAN SHEET 01/001-0002, BOTH DATED FEBRUARY 2, 1994.
 SUBJECT PROPERTY LIES WITHIN THE 7/2-8 PROTECTED AREA INDICATED.

- TREE PROTECTION NOTES**
1. ANY TREE ROOTS EXPOSED BY CONSTRUCTION SHALL BE SEVERED CLEARLY WITH A PROWING TOOL.
 2. DO NOT DISPOSE OF ANY CHEMICALS OR REMOVE SOIL OUTSIDE THE LIMIT OF WORK.
 3. WHEN INSTALLING NEW LANDSCAPE PLANTS, DO NOT DRIVE EQUIPMENT UPON OR DISTURB SOIL WITHIN THE CRITICAL ROOT ZONE OF EXISTING TREES.
 4. ALL EXISTING TREES MUST BE PROTECTED BEFORE ANY SITE WORK BEGINS.
 5. A LANDSCAPE PROTECTION SUPERVISOR WHO IS REGISTERED WITH THE TOWN OF CHAPEL HILL MUST BE PRESENT AT ALL TIMES DURING ALL CONSTRUCTION ACTIVITIES AND SHALL BE RESPONSIBLE FOR THE PROTECTION, MAINTENANCE, AND REMOVAL OF TREE PROTECTION FENCING, AND THE DELIVERY, INSTALLATION AND REMOVAL OF TREE PROTECTION MATERIALS AND EQUIPMENT.



CONTRACTOR SHALL MAINTAIN ALL EXISTING UTILITIES AND STRUCTURES. THE CONTRACTOR SHALL BE RESPONSIBLE FOR THE PROTECTION OF ALL EXISTING UTILITIES AND STRUCTURES.

Site: 109/137, 109/138, 109/139, 109/140, 109/141, 109/142, 109/143, 109/144, 109/145, 109/146, 109/147, 109/148, 109/149, 109/150, 109/151, 109/152, 109/153, 109/154, 109/155, 109/156, 109/157, 109/158, 109/159, 109/160, 109/161, 109/162, 109/163, 109/164, 109/165, 109/166, 109/167, 109/168, 109/169, 109/170, 109/171, 109/172, 109/173, 109/174, 109/175, 109/176, 109/177, 109/178, 109/179, 109/180, 109/181, 109/182, 109/183, 109/184, 109/185, 109/186, 109/187, 109/188, 109/189, 109/190, 109/191, 109/192, 109/193, 109/194, 109/195, 109/196, 109/197, 109/198, 109/199, 109/200, 109/201, 109/202, 109/203, 109/204, 109/205, 109/206, 109/207, 109/208, 109/209, 109/210, 109/211, 109/212, 109/213, 109/214, 109/215, 109/216, 109/217, 109/218, 109/219, 109/220, 109/221, 109/222, 109/223, 109/224, 109/225, 109/226, 109/227, 109/228, 109/229, 109/230, 109/231, 109/232, 109/233, 109/234, 109/235, 109/236, 109/237, 109/238, 109/239, 109/240, 109/241, 109/242, 109/243, 109/244, 109/245, 109/246, 109/247, 109/248, 109/249, 109/250, 109/251, 109/252, 109/253, 109/254, 109/255, 109/256, 109/257, 109/258, 109/259, 109/260, 109/261, 109/262, 109/263, 109/264, 109/265, 109/266, 109/267, 109/268, 109/269, 109/270, 109/271, 109/272, 109/273, 109/274, 109/275, 109/276, 109/277, 109/278, 109/279, 109/280, 109/281, 109/282, 109/283, 109/284, 109/285, 109/286, 109/287, 109/288, 109/289, 109/290, 109/291, 109/292, 109/293, 109/294, 109/295, 109/296, 109/297, 109/298, 109/299, 109/300, 109/301, 109/302, 109/303, 109/304, 109/305, 109/306, 109/307, 109/308, 109/309, 109/310, 109/311, 109/312, 109/313, 109/314, 109/315, 109/316, 109/317, 109/318, 109/319, 109/320, 109/321, 109/322, 109/323, 109/324, 109/325, 109/326, 109/327, 109/328, 109/329, 109/330, 109/331, 109/332, 109/333, 109/334, 109/335, 109/336, 109/337, 109/338, 109/339, 109/340, 109/341, 109/342, 109/343, 109/344, 109/345, 109/346, 109/347, 109/348, 109/349, 109/350, 109/351, 109/352, 109/353, 109/354, 109/355, 109/356, 109/357, 109/358, 109/359, 109/360, 109/361, 109/362, 109/363, 109/364, 109/365, 109/366, 109/367, 109/368, 109/369, 109/370, 109/371, 109/372, 109/373, 109/374, 109/375, 109/376, 109/377, 109/378, 109/379, 109/380, 109/381, 109/382, 109/383, 109/384, 109/385, 109/386, 109/387, 109/388, 109/389, 109/390, 109/391, 109/392, 109/393, 109/394, 109/395, 109/396, 109/397, 109/398, 109/399, 109/400, 109/401, 109/402, 109/403, 109/404, 109/405, 109/406, 109/407, 109/408, 109/409, 109/410, 109/411, 109/412, 109/413, 109/414, 109/415, 109/416, 109/417, 109/418, 109/419, 109/420, 109/421, 109/422, 109/423, 109/424, 109/425, 109/426, 109/427, 109/428, 109/429, 109/430, 109/431, 109/432, 109/433, 109/434, 109/435, 109/436, 109/437, 109/438, 109/439, 109/440, 109/441, 109/442, 109/443, 109/444, 109/445, 109/446, 109/447, 109/448, 109/449, 109/450, 109/451, 109/452, 109/453, 109/454, 109/455, 109/456, 109/457, 109/458, 109/459, 109/460, 109/461, 109/462, 109/463, 109/464, 109/465, 109/466, 109/467, 109/468, 109/469, 109/470, 109/471, 109/472, 109/473, 109/474, 109/475, 109/476, 109/477, 109/478, 109/479, 109/480, 109/481, 109/482, 109/483, 109/484, 109/485, 109/486, 109/487, 109/488, 109/489, 109/490, 109/491, 109/492, 109/493, 109/494, 109/495, 109/496, 109/497, 109/498, 109/499, 109/500, 109/501, 109/502, 109/503, 109/504, 109/505, 109/506, 109/507, 109/508, 109/509, 109/510, 109/511, 109/512, 109/513, 109/514, 109/515, 109/516, 109/517, 109/518, 109/519, 109/520, 109/521, 109/522, 109/523, 109/524, 109/525, 109/526, 109/527, 109/528, 109/529, 109/530, 109/531, 109/532, 109/533, 109/534, 109/535, 109/536, 109/537, 109/538, 109/539, 109/540, 109/541, 109/542, 109/543, 109/544, 109/545, 109/546, 109/547, 109/548, 109/549, 109/550, 109/551, 109/552, 109/553, 109/554, 109/555, 109/556, 109/557, 109/558, 109/559, 109/560, 109/561, 109/562, 109/563, 109/564, 109/565, 109/566, 109/567, 109/568, 109/569, 109/570, 109/571, 109/572, 109/573, 109/574, 109/575, 109/576, 109/577, 109/578, 109/579, 109/580, 109/581, 109/582, 109/583, 109/584, 109/585, 109/586, 109/587, 109/588, 109/589, 109/590, 109/591, 109/592, 109/593, 109/594, 109/595, 109/596, 109/597, 109/598, 109/599, 109/600, 109/601, 109/602, 109/603, 109/604, 109/605, 109/606, 109/607, 109/608, 109/609, 109/610, 109/611, 109/612, 109/613, 109/614, 109/615, 109/616, 109/617, 109/618, 109/619, 109/620, 109/621, 109/622, 109/623, 109/624, 109/625, 109/626, 109/627, 109/628, 109/629, 109/630, 109/631, 109/632, 109/633, 109/634, 109/635, 109/636, 109/637, 109/638, 109/639, 109/640, 109/641, 109/642, 109/643, 109/644, 109/645, 109/646, 109/647, 109/648, 109/649, 109/650, 109/651, 109/652, 109/653, 109/654, 109/655, 109/656, 109/657, 109/658, 109/659, 109/660, 109/661, 109/662, 109/663, 109/664, 109/665, 109/666, 109/667, 109/668, 109/669, 109/670, 109/671, 109/672, 109/673, 109/674, 109/675, 109/676, 109/677, 109/678, 109/679, 109/680, 109/681, 109/682, 109/683, 109/684, 109/685, 109/686, 109/687, 109/688, 109/689, 109/690, 109/691, 109/692, 109/693, 109/694, 109/695, 109/696, 109/697, 109/698, 109/699, 109/700, 109/701, 109/702, 109/703, 109/704, 109/705, 109/706, 109/707, 109/708, 109/709, 109/710, 109/711, 109/712, 109/713, 109/714, 109/715, 109/716, 109/717, 109/718, 109/719, 109/720, 109/721, 109/722, 109/723, 109/724, 109/725, 109/726, 109/727, 109/728, 109/729, 109/730, 109/731, 109/732, 109/733, 109/734, 109/735, 109/736, 109/737, 109/738, 109/739, 109/740, 109/741, 109/742, 109/743, 109/744, 109/745, 109/746, 109/747, 109/748, 109/749, 109/750, 109/751, 109/752, 109/753, 109/754, 109/755, 109/756, 109/757, 109/758, 109/759, 109/760, 109/761, 109/762, 109/763, 109/764, 109/765, 109/766, 109/767, 109/768, 109/769, 109/770, 109/771, 109/772, 109/773, 109/774, 109/775, 109/776, 109/777, 109/778, 109/779, 109/780, 109/781, 109/782, 109/783, 109/784, 109/785, 109/786, 109/787, 109/788, 109/789, 109/790, 109/791, 109/792, 109/793, 109/794, 109/795, 109/796, 109/797, 109/798, 109/799, 109/800, 109/801, 109/802, 109/803, 109/804, 109/805, 109/806, 109/807, 109/808, 109/809, 109/810, 109/811, 109/812, 109/813, 109/814, 109/815, 109/816, 109/817, 109/818, 109/819, 109/820, 109/821, 109/822, 109/823, 109/824, 109/825, 109/826, 109/827, 109/828, 109/829, 109/830, 109/831, 109/832, 109/833, 109/834, 109/835, 109/836, 109/837, 109/838, 109/839, 109/840, 109/841, 109/842, 109/843, 109/844, 109/845, 109/846, 109/847, 109/848, 109/849, 109/850, 109/851, 109/852, 109/853, 109/854, 109/855, 109/856, 109/857, 109/858, 109/859, 109/860, 109/861, 109/862, 109/863, 109/864, 109/865, 109/866, 109/867, 109/868, 109/869, 109/870, 109/871, 109/872, 109/873, 109/874, 109/875, 109/876, 109/877, 109/878, 109/879, 109/880, 109/881, 109/882, 109/883, 109/884, 109/885, 109/886, 109/887, 109/888, 109/889, 109/890, 109/891, 109/892, 109/893, 109/894, 109/895, 109/896, 109/897, 109/898, 109/899, 109/900, 109/901, 109/902, 109/903, 109/904, 109/905, 109/906, 109/907, 109/908, 109/909, 109/910, 109/911, 109/912, 109/913, 109/914, 109/915, 109/916, 109/917, 109/918, 109/919, 109/920, 109/921, 109/922, 109/923, 109/924, 109/925, 109/926, 109/927, 109/928, 109/929, 109/930, 109/931, 109/932, 109/933, 109/934, 109/935, 109/936, 109/937, 109/938, 109/939, 109/940, 109/941, 109/942, 109/943, 109/944, 109/945, 109/946, 109/947, 109/948, 109/949, 109/950, 109/951, 109/952, 109/953, 109/954, 109/955, 109/956, 109/957, 109/958, 109/959, 109/960, 109/961, 109/962, 109/963, 109/964, 109/965, 109/966, 109/967, 109/968, 109/969, 109/970, 109/971, 109/972, 109/973, 109/974, 109/975, 109/976, 109/977, 109/978, 109/979, 109/980, 109/981, 109/982, 109/983, 109/984, 109/985, 109/986, 109/987, 109/988, 109/989, 109/990, 109/991, 109/992, 109/993, 109/994, 109/995, 109/996, 109/997, 109/998, 109/999, 109/1000.

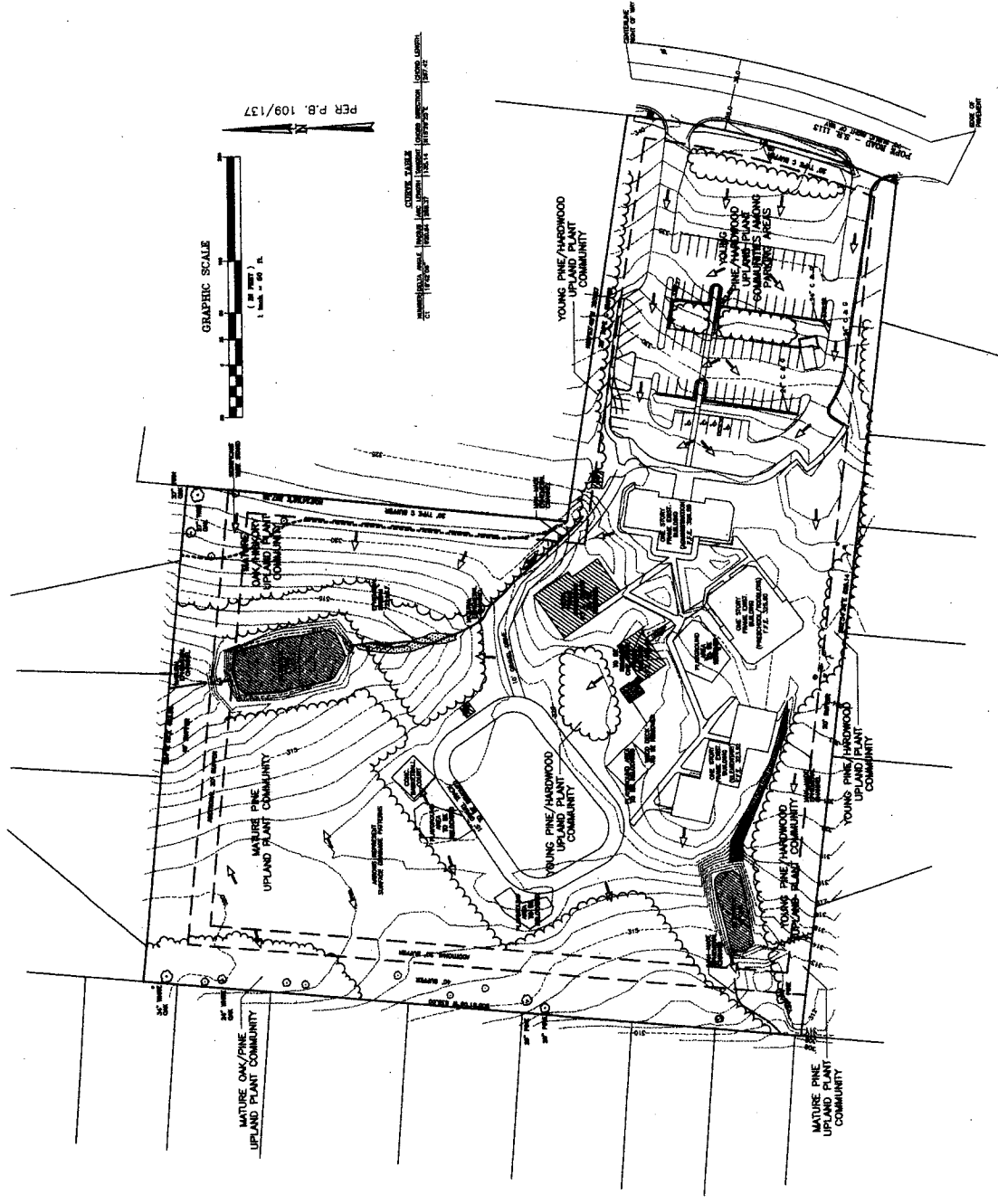


Contractor shall maintain all existing utilities and structures. The contractor shall be responsible for the protection of all existing utilities and structures.

GRAPHIC SCALE
1" = 50'
1" = 100'

PER P.B. 109/137

CONTRACT NUMBER: [Number]
PROJECT NAME: [Name]
DATE: [Date]



SITE NOTES

UTILITIES CONTRACTED BY ULCOO SERVICE:
TIME WARNER CABLE
DIAL METER
PUBLIC SERVICE MC ENERGY
BELL SOUTH
CENTRAL LOCATING SERVICE, LTD
MARK CORPORATION

ALL UNDERGROUND UTILITY LOCATIONS SHOWN ON THIS PLAN SHOULD BE CONTRACTED PRIOR TO ANY EXCAVATION.

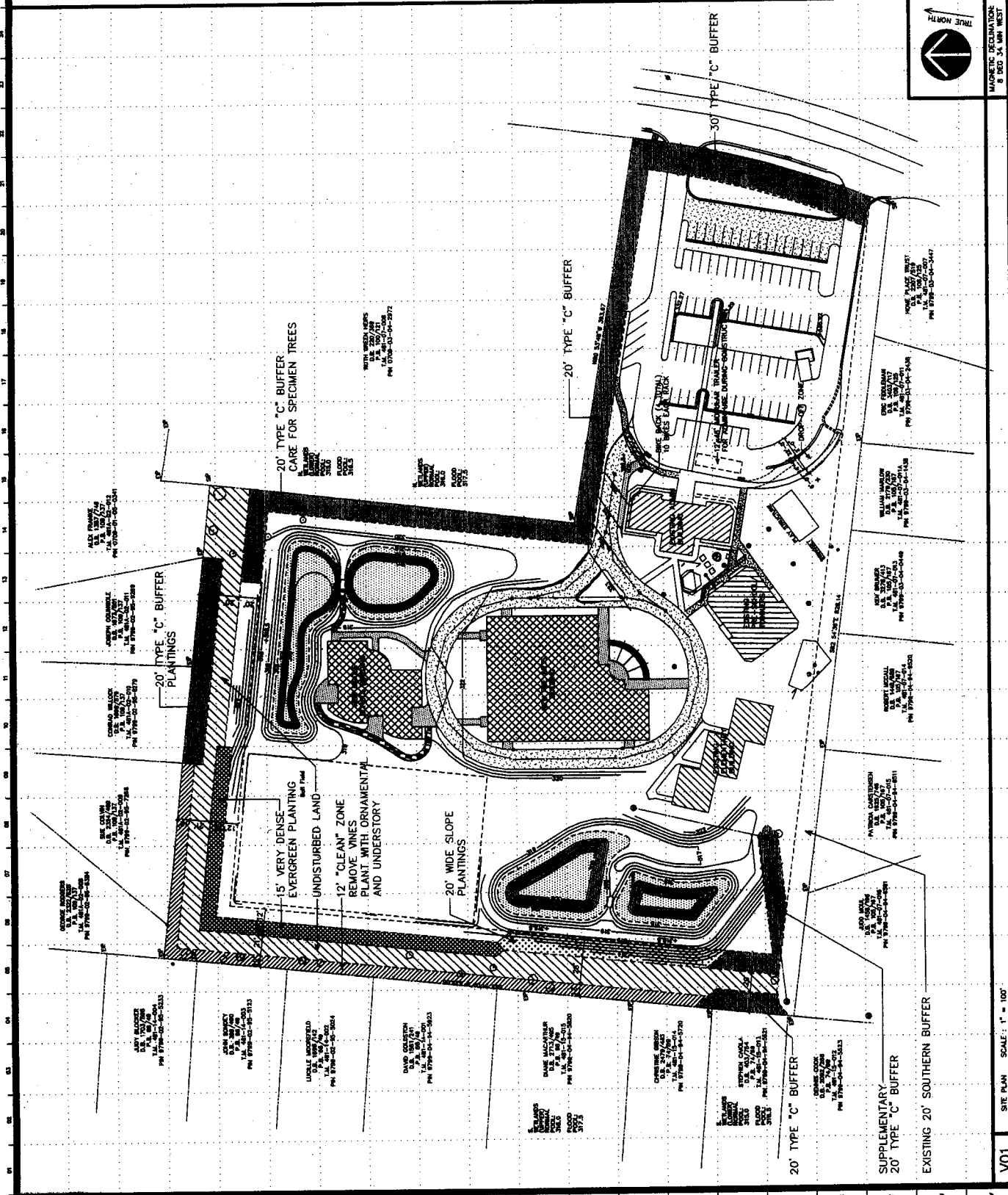
SUBJECT PROPERTY LIES WITHIN ZONE 2* OUTSIDE THE 500 YEAR FLOOD AREA. FLOOD HAZARD ZONING MAP (FIRM PANEL 37033001850, BOTH DATED FEBRUARY 2, 1998).

SUBJECT PROPERTY LIES WITHIN THE 7/A-B PROTECTED AREA WATERSHED.

PRELIMINARY
 NOT FOR CONSTRUCTION

MATERIALS LEGEND

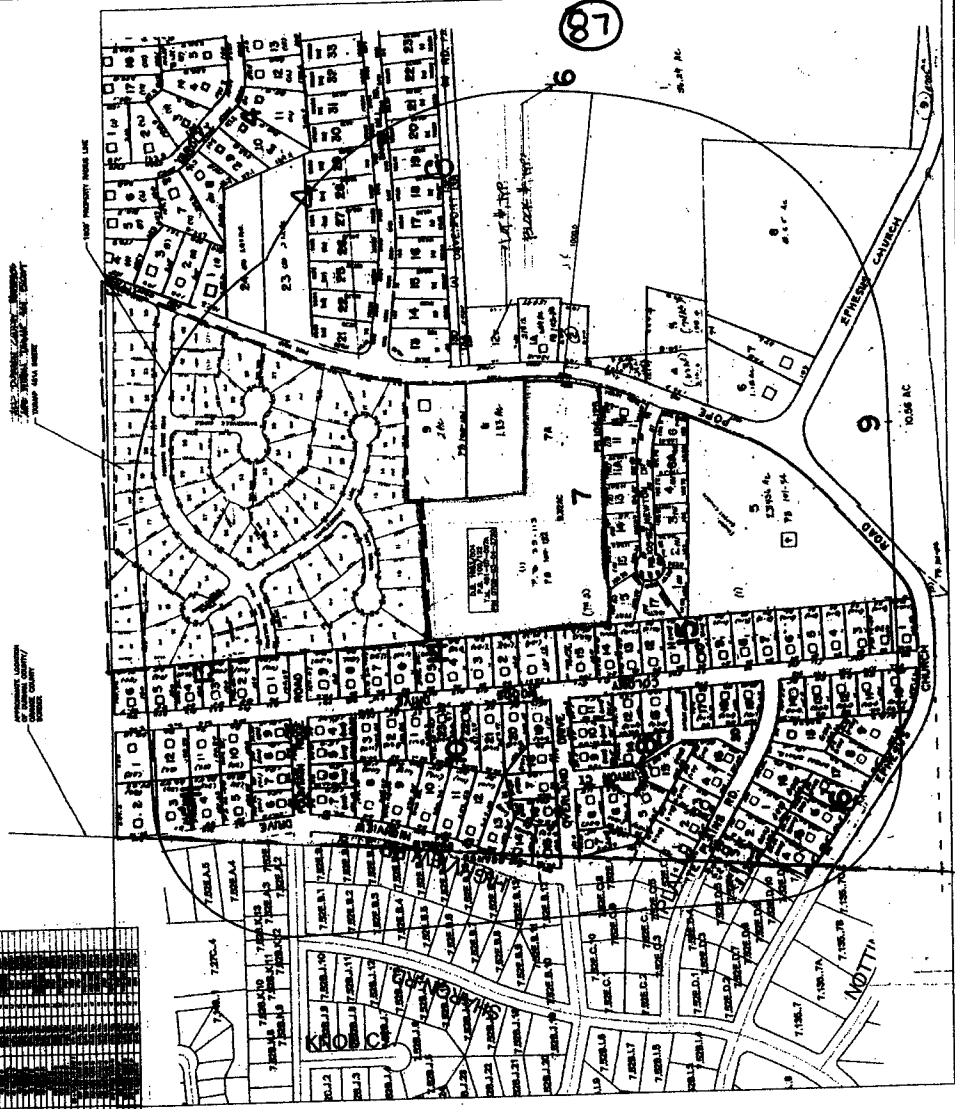
GENERAL NOTES



SITE PLAN SCALE: 1" = 100'

V01

(87)



COMPANY, OR BY THE
MONTESSORI CHILDREN'S HOUSE OF CHAPEL HILL, INC.
 100 S. HARRIS STREET, CHAPEL HILL, N.C. 27514
 PHONE: 919-942-2000
 FAX: 919-942-2000



THE INFORMATION CONTAINED HEREIN IS FOR GENERAL INFORMATION ONLY AND IS NOT TO BE USED AS A BASIS FOR ANY DECISION OR ACTION.

