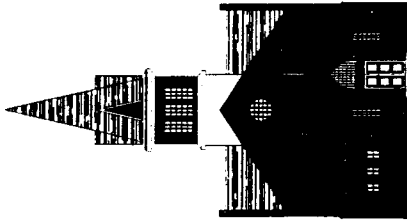
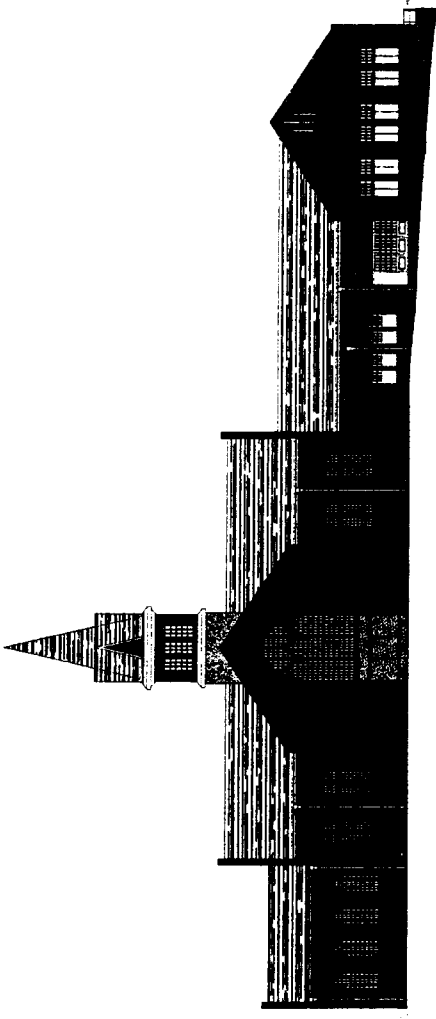


IOLY TRINITY LUTHERAN CH RCH

ROSEMARY STREET AT COTTAGE LANE, CHAPEL HILL NORTH CAROLINA

SPECIAL USE PERMIT APPLICATION



PROJECT DATA:

TO WHOM IT MAY CONCERN:
 I, MICHAEL HINING ARCHITECTS, P.A., a North Carolina limited liability partnership, do hereby certify that the above information is true and correct to the best of my knowledge and belief.
 MICHAEL HINING ARCHITECTS, P.A.
 35 VILCON CIRCLE, SUITE 201, CHAPEL HILL, NORTH CAROLINA 27514
 TEL: 919.997.6688 FAX: 919.997.6688
 WWW.MHARCHITECTS.COM
 PROJECT NUMBER: 10-00000000-001
 PROJECT NAME: IOLY TRINITY LUTHERAN CHURCH
 PROJECT ADDRESS: 35 VILCON CIRCLE, SUITE 201, CHAPEL HILL, NORTH CAROLINA 27514
 PROJECT DATE: 10/15/2010
 PROJECT SHEET: 10-00000000-001-001

PROJECT NOTES:

1. ALL CONSTRUCTION SHALL BE IN ACCORDANCE WITH THE LATEST EDITIONS OF THE INTERNATIONAL BUILDING CODE (IBC) AND THE LATEST EDITIONS OF THE INTERNATIONAL PLUMBING AND MECHANICAL CODE (IMC).
 2. ALL CONSTRUCTION SHALL BE IN ACCORDANCE WITH THE LATEST EDITIONS OF THE INTERNATIONAL ELECTRICAL CODE (IEC) AND THE LATEST EDITIONS OF THE INTERNATIONAL FIRE AND ALARM CODE (IFAC).
 3. ALL CONSTRUCTION SHALL BE IN ACCORDANCE WITH THE LATEST EDITIONS OF THE INTERNATIONAL MECHANICAL AND PLUMBING CODE (IMC) AND THE LATEST EDITIONS OF THE INTERNATIONAL ELECTRICAL CODE (IEC).
 4. ALL CONSTRUCTION SHALL BE IN ACCORDANCE WITH THE LATEST EDITIONS OF THE INTERNATIONAL BUILDING CODE (IBC) AND THE LATEST EDITIONS OF THE INTERNATIONAL PLUMBING AND MECHANICAL CODE (IMC).
 5. ALL CONSTRUCTION SHALL BE IN ACCORDANCE WITH THE LATEST EDITIONS OF THE INTERNATIONAL ELECTRICAL CODE (IEC) AND THE LATEST EDITIONS OF THE INTERNATIONAL FIRE AND ALARM CODE (IFAC).
 6. ALL CONSTRUCTION SHALL BE IN ACCORDANCE WITH THE LATEST EDITIONS OF THE INTERNATIONAL MECHANICAL AND PLUMBING CODE (IMC) AND THE LATEST EDITIONS OF THE INTERNATIONAL ELECTRICAL CODE (IEC).
 7. ALL CONSTRUCTION SHALL BE IN ACCORDANCE WITH THE LATEST EDITIONS OF THE INTERNATIONAL BUILDING CODE (IBC) AND THE LATEST EDITIONS OF THE INTERNATIONAL PLUMBING AND MECHANICAL CODE (IMC).
 8. ALL CONSTRUCTION SHALL BE IN ACCORDANCE WITH THE LATEST EDITIONS OF THE INTERNATIONAL ELECTRICAL CODE (IEC) AND THE LATEST EDITIONS OF THE INTERNATIONAL FIRE AND ALARM CODE (IFAC).
 9. ALL CONSTRUCTION SHALL BE IN ACCORDANCE WITH THE LATEST EDITIONS OF THE INTERNATIONAL MECHANICAL AND PLUMBING CODE (IMC) AND THE LATEST EDITIONS OF THE INTERNATIONAL ELECTRICAL CODE (IEC).
 10. ALL CONSTRUCTION SHALL BE IN ACCORDANCE WITH THE LATEST EDITIONS OF THE INTERNATIONAL BUILDING CODE (IBC) AND THE LATEST EDITIONS OF THE INTERNATIONAL PLUMBING AND MECHANICAL CODE (IMC).

LIST OF SHEETS:

SD 0.0 - COVER SHEET
 SD 0.1 - AREA MAP
 SD 0.2 - SITE ANALYSIS
 SD 1.1 - EXISTING CONDITIONS
 SD 2.0 - SITE LAYOUT PLAN
 SD 3.0 - GRADING PLAN
 SD 4.0 - NOT USED
 SD 5.0 - UTILITY PLAN
 SD 6.0 - NOT USED
 SD 7.0 - LANDSCAPE PLAN
 SD 8.0 - NOT USED

SPECIAL USE PERMIT PLANS - NOT FOR CONSTRUCTION

MICHAEL HINING ARCHITECTS

CHAPEL HILL OFFICE: 35 VILCON CIRCLE, SUITE 201, CHAPEL HILL, NORTH CAROLINA 27514 TEL: 919.997.6688 FAX: 919.997.6688 WWW.MHARCHITECTS.COM

MEMBERS OF THE AMERICAN INSTITUTE OF ARCHITECTS

NEW SANCTUARY
 HOLY TRINITY LUTHERAN CHURCH
 CHAPEL HILL, NORTH CAROLINA

SHEET CONTENTS
 COVER SHEET

SD 00





SHEET CONTENTS
 TREE PROTECTION &
 DEMOLITION PLAN

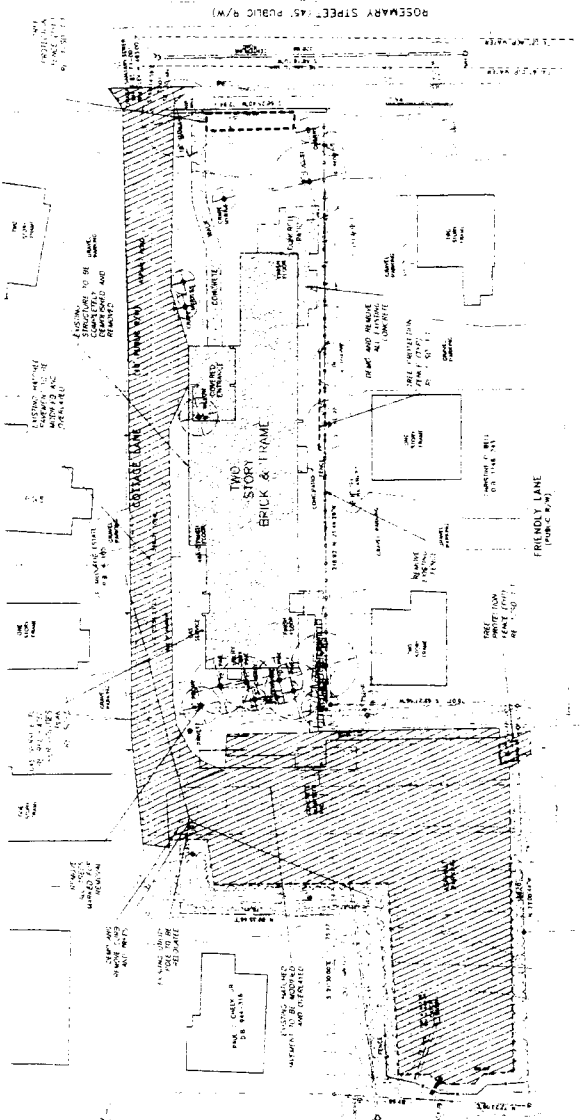
NEW SANCTUARY
 HOLY TRINITY LUTHERAN CHURCH
 CHAPEL HILL, NORTH CAROLINA



MEMBERS OF THE AMERICAN INSTITUTE OF ARCHITECTS
 MICHAEL HINING ARCHITECTS
 CHAPEL HILL OFFICE: 5 VILSON CIRCLE SUITE 303 CHAPEL HILL, NORTH CAROLINA 27514
 KENNESAW OFFICE: 1000 W. 10TH AVE. SE KENNESAW, GA 30144
 PHONE: 704.944.1111 FAX: 704.944.1112
 WWW.MICHAELHININGARCHITECTS.COM

SD 11

SPECIAL USE PERMIT PLANS - NOT FOR CONSTRUCTION

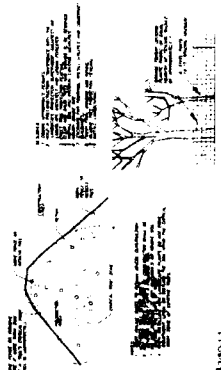


75041 & PROPERTY OF
 MADELINE T. PATTERSON 11 A
 PB 4B 170

CANDICE W. DUBAI
 CB 142-103
 PB 47 01

0 20 40 60
 Feet

8041
 EXISTING CONSTRUCTION AND DEMOLITION



8042
 TREE PROTECTION FENCING

8043
 DEMOLITION NOTES

8044
 DEMOLITION NOTES



SHEET CONTENTS
SITE ANALYSIS
STEEP SLOPES

NEW SANCTUARY
HOLY TRINITY LUTHERAN CHURCH
CHAPEL HILL, NORTH CAROLINA

55

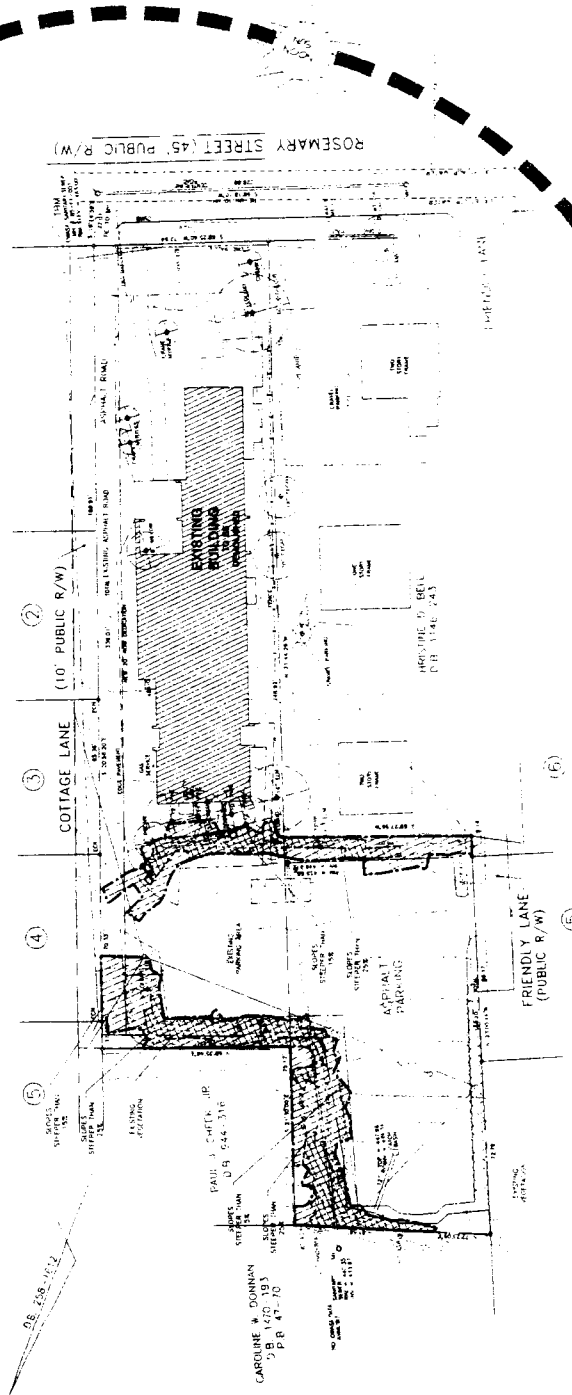


SD 02

SPECIAL USE PERMIT PLANS - NOT FOR CONSTRUCTION
MICHAEL HINNING ARCHITECTS
CHAPEL HILL OFFICE: 5 VILCON CIRCLE, SUITE 201, CHAPEL HILL, NORTH CAROLINA, 27514
MEMBERS OF THE AMERICAN INSTITUTE OF ARCHITECTS

EXISTING RESIDENTIAL

J.P. MACHETS STATE
P.L. 4-100



OWNER & PROPERTY:
J.P. MACHETS STATE
P.L. 4-100

Scale: 1" = 20'

DATE: 11/11/08

NOTES:
1. ALL DIMENSIONS ARE IN FEET UNLESS OTHERWISE NOTED.
2. ALL DISTANCES ARE TO THE CENTERLINE OF THE ROAD UNLESS OTHERWISE NOTED.
3. ALL DISTANCES ARE TO THE CENTERLINE OF THE ROAD UNLESS OTHERWISE NOTED.
4. ALL DISTANCES ARE TO THE CENTERLINE OF THE ROAD UNLESS OTHERWISE NOTED.
5. ALL DISTANCES ARE TO THE CENTERLINE OF THE ROAD UNLESS OTHERWISE NOTED.
6. ALL DISTANCES ARE TO THE CENTERLINE OF THE ROAD UNLESS OTHERWISE NOTED.
7. ALL DISTANCES ARE TO THE CENTERLINE OF THE ROAD UNLESS OTHERWISE NOTED.
8. ALL DISTANCES ARE TO THE CENTERLINE OF THE ROAD UNLESS OTHERWISE NOTED.
9. ALL DISTANCES ARE TO THE CENTERLINE OF THE ROAD UNLESS OTHERWISE NOTED.
10. ALL DISTANCES ARE TO THE CENTERLINE OF THE ROAD UNLESS OTHERWISE NOTED.

HILLSBORO ST
ROSEMARY ST
FRANKLIN ST
COTTAGE LN
FRIENDLY LN





SHEET CONTENTS
 SITE PLAN

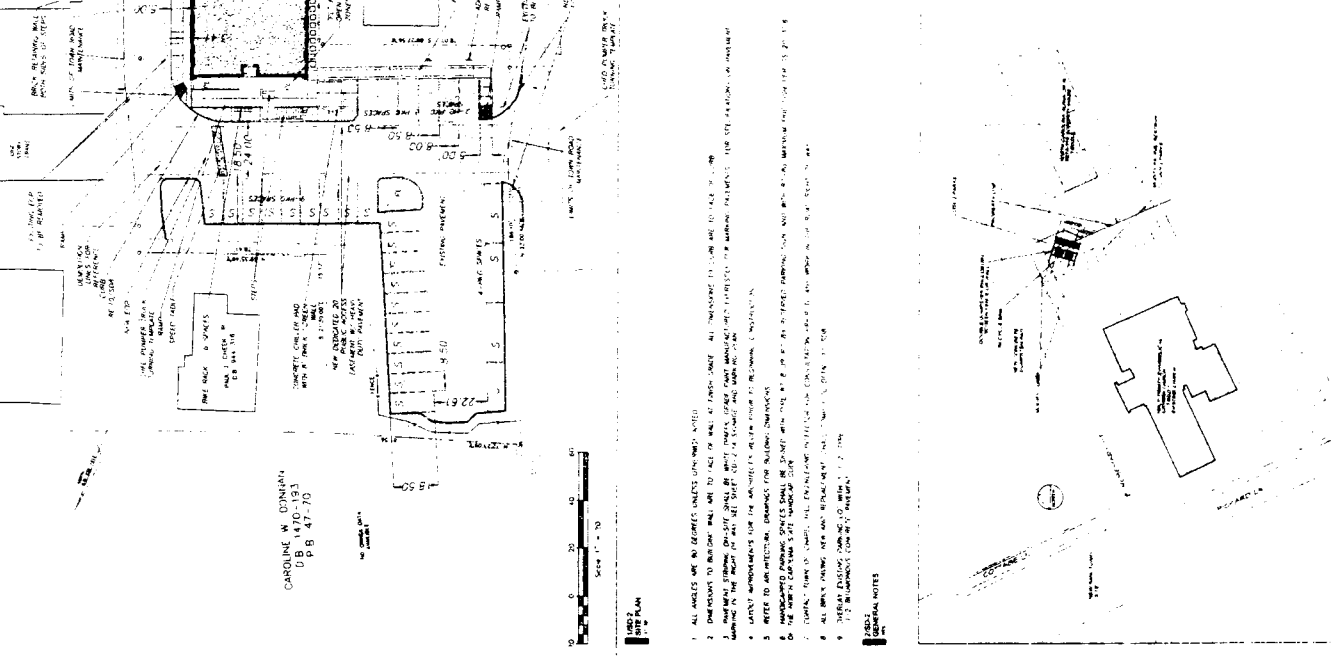
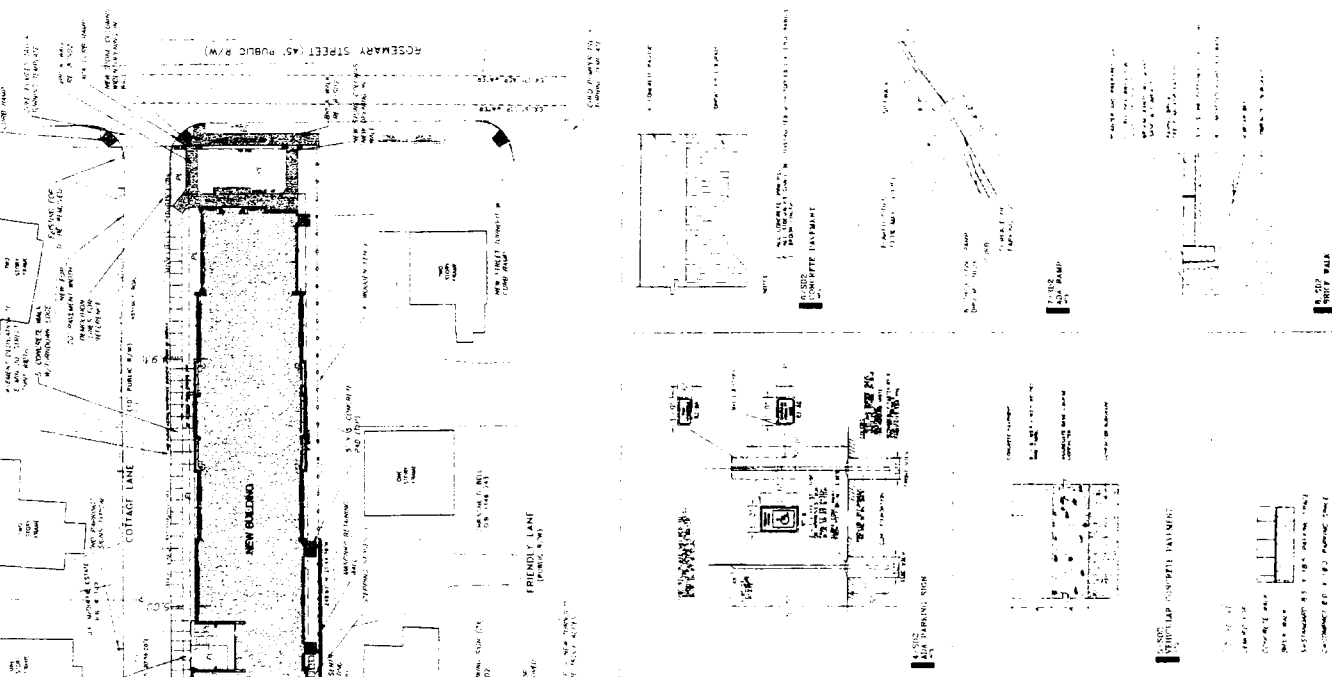
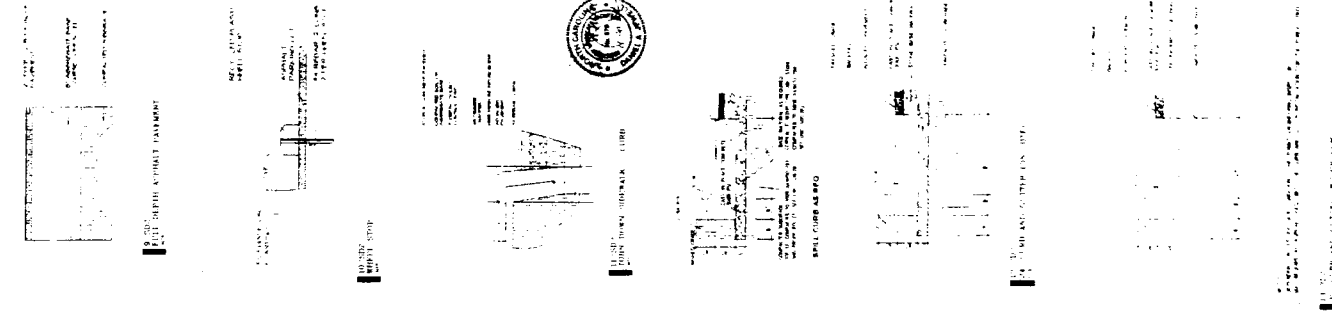
HOLY TRINITY LUTHERAN CHURCH
 NEW SANCTUARY
 CHAPEL HILL, NORTH CAROLINA



MEMBERS OF THE AMERICAN INSTITUTE OF ARCHITECTS

SD 20

SPECIAL USE PERMIT PLANS - NOT FOR CONSTRUCTION



1. ALL DIMENSIONS ARE IN FEET UNLESS OTHERWISE NOTED.
2. DIMENSIONS TO FINISH FLOOR TO FACE OF WALL AT PARAPET AND THROUGHOUT TO CORNER ARE TO FACE UNLESS NOTED OTHERWISE.
3. FINISH FLOOR TO FACE OF WALL AT PARAPET AND THROUGHOUT TO CORNER ARE TO FACE UNLESS NOTED OTHERWISE.
4. FINISH FLOOR TO FACE OF WALL AT PARAPET AND THROUGHOUT TO CORNER ARE TO FACE UNLESS NOTED OTHERWISE.
5. FINISH FLOOR TO FACE OF WALL AT PARAPET AND THROUGHOUT TO CORNER ARE TO FACE UNLESS NOTED OTHERWISE.
6. FINISH FLOOR TO FACE OF WALL AT PARAPET AND THROUGHOUT TO CORNER ARE TO FACE UNLESS NOTED OTHERWISE.
7. FINISH FLOOR TO FACE OF WALL AT PARAPET AND THROUGHOUT TO CORNER ARE TO FACE UNLESS NOTED OTHERWISE.
8. FINISH FLOOR TO FACE OF WALL AT PARAPET AND THROUGHOUT TO CORNER ARE TO FACE UNLESS NOTED OTHERWISE.
9. FINISH FLOOR TO FACE OF WALL AT PARAPET AND THROUGHOUT TO CORNER ARE TO FACE UNLESS NOTED OTHERWISE.
10. FINISH FLOOR TO FACE OF WALL AT PARAPET AND THROUGHOUT TO CORNER ARE TO FACE UNLESS NOTED OTHERWISE.

GENERAL NOTES

1. ALL DIMENSIONS ARE IN FEET UNLESS OTHERWISE NOTED.

2. DIMENSIONS TO FINISH FLOOR TO FACE OF WALL AT PARAPET AND THROUGHOUT TO CORNER ARE TO FACE UNLESS NOTED OTHERWISE.

3. FINISH FLOOR TO FACE OF WALL AT PARAPET AND THROUGHOUT TO CORNER ARE TO FACE UNLESS NOTED OTHERWISE.

4. FINISH FLOOR TO FACE OF WALL AT PARAPET AND THROUGHOUT TO CORNER ARE TO FACE UNLESS NOTED OTHERWISE.

5. FINISH FLOOR TO FACE OF WALL AT PARAPET AND THROUGHOUT TO CORNER ARE TO FACE UNLESS NOTED OTHERWISE.

6. FINISH FLOOR TO FACE OF WALL AT PARAPET AND THROUGHOUT TO CORNER ARE TO FACE UNLESS NOTED OTHERWISE.

7. FINISH FLOOR TO FACE OF WALL AT PARAPET AND THROUGHOUT TO CORNER ARE TO FACE UNLESS NOTED OTHERWISE.

8. FINISH FLOOR TO FACE OF WALL AT PARAPET AND THROUGHOUT TO CORNER ARE TO FACE UNLESS NOTED OTHERWISE.

9. FINISH FLOOR TO FACE OF WALL AT PARAPET AND THROUGHOUT TO CORNER ARE TO FACE UNLESS NOTED OTHERWISE.

10. FINISH FLOOR TO FACE OF WALL AT PARAPET AND THROUGHOUT TO CORNER ARE TO FACE UNLESS NOTED OTHERWISE.

GENERAL NOTES

1. ALL DIMENSIONS ARE IN FEET UNLESS OTHERWISE NOTED.

2. DIMENSIONS TO FINISH FLOOR TO FACE OF WALL AT PARAPET AND THROUGHOUT TO CORNER ARE TO FACE UNLESS NOTED OTHERWISE.

3. FINISH FLOOR TO FACE OF WALL AT PARAPET AND THROUGHOUT TO CORNER ARE TO FACE UNLESS NOTED OTHERWISE.

4. FINISH FLOOR TO FACE OF WALL AT PARAPET AND THROUGHOUT TO CORNER ARE TO FACE UNLESS NOTED OTHERWISE.

5. FINISH FLOOR TO FACE OF WALL AT PARAPET AND THROUGHOUT TO CORNER ARE TO FACE UNLESS NOTED OTHERWISE.

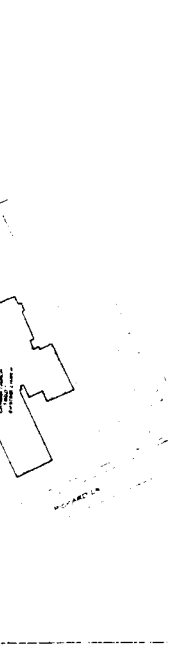
6. FINISH FLOOR TO FACE OF WALL AT PARAPET AND THROUGHOUT TO CORNER ARE TO FACE UNLESS NOTED OTHERWISE.

7. FINISH FLOOR TO FACE OF WALL AT PARAPET AND THROUGHOUT TO CORNER ARE TO FACE UNLESS NOTED OTHERWISE.

8. FINISH FLOOR TO FACE OF WALL AT PARAPET AND THROUGHOUT TO CORNER ARE TO FACE UNLESS NOTED OTHERWISE.

9. FINISH FLOOR TO FACE OF WALL AT PARAPET AND THROUGHOUT TO CORNER ARE TO FACE UNLESS NOTED OTHERWISE.

10. FINISH FLOOR TO FACE OF WALL AT PARAPET AND THROUGHOUT TO CORNER ARE TO FACE UNLESS NOTED OTHERWISE.



COPYRIGHT MICHAEL HINING ARCHITECTS



SHEET CONTENTS
UTILITY
PLAN

NEW SANCTUARY
HOLY TRINITY LUTHERAN CHURCH
CHAPEL HILL, NORTH CAROLINA

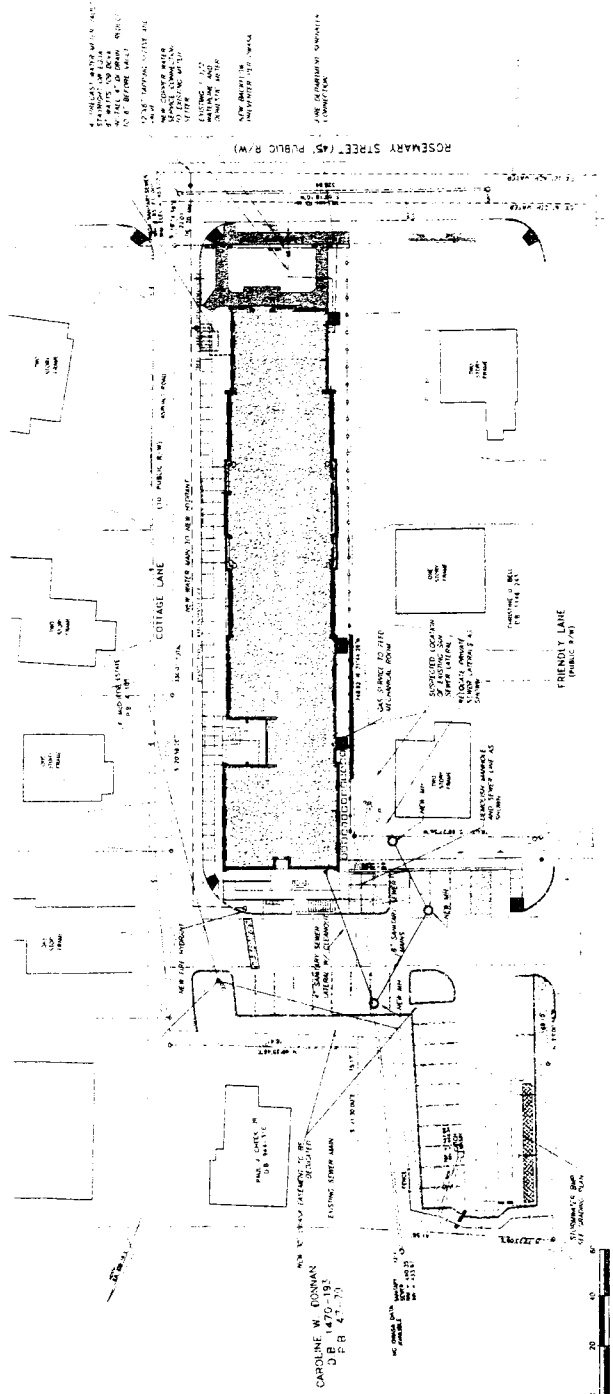


SD 5.0
DATE OF PLAN
DATE OF CALC
DATE OF CHECK

Members of The American Institute of Architects
MICHAEL HINING ARCHITECTS
CHAPEL HILL OFFICE: 5 WALDOOM CIRCLE, SUITE 201, CHAPEL HILL, NORTH CAROLINA, 27514
DURHAM OFFICE: 100 SOUTH MAIN STREET, SUITE 200, DURHAM, NORTH CAROLINA, 27601



SPECIAL USE PERMIT PLANS - NOT FOR CONSTRUCTION



Orange Water and Sewer Authority
Utility Notes for Holy Trinity Lutheran Church

1. Symbols and abbreviations are in accordance with the standards set forth in the Orange Water and Sewer Authority's Utility Notes. The symbols and abbreviations are intended to be used as a guide only and are not intended to be used as a standard. The symbols and abbreviations are intended to be used as a guide only and are not intended to be used as a standard.

2. All utility lines and structures shown on this plan are assumed to be in accordance with the standards set forth in the Orange Water and Sewer Authority's Utility Notes. The symbols and abbreviations are intended to be used as a guide only and are not intended to be used as a standard.

3. All utility lines and structures shown on this plan are assumed to be in accordance with the standards set forth in the Orange Water and Sewer Authority's Utility Notes. The symbols and abbreviations are intended to be used as a guide only and are not intended to be used as a standard.

4. All utility lines and structures shown on this plan are assumed to be in accordance with the standards set forth in the Orange Water and Sewer Authority's Utility Notes. The symbols and abbreviations are intended to be used as a guide only and are not intended to be used as a standard.

5. All utility lines and structures shown on this plan are assumed to be in accordance with the standards set forth in the Orange Water and Sewer Authority's Utility Notes. The symbols and abbreviations are intended to be used as a guide only and are not intended to be used as a standard.

6. All utility lines and structures shown on this plan are assumed to be in accordance with the standards set forth in the Orange Water and Sewer Authority's Utility Notes. The symbols and abbreviations are intended to be used as a guide only and are not intended to be used as a standard.

7. All utility lines and structures shown on this plan are assumed to be in accordance with the standards set forth in the Orange Water and Sewer Authority's Utility Notes. The symbols and abbreviations are intended to be used as a guide only and are not intended to be used as a standard.

8. All utility lines and structures shown on this plan are assumed to be in accordance with the standards set forth in the Orange Water and Sewer Authority's Utility Notes. The symbols and abbreviations are intended to be used as a guide only and are not intended to be used as a standard.

9. All utility lines and structures shown on this plan are assumed to be in accordance with the standards set forth in the Orange Water and Sewer Authority's Utility Notes. The symbols and abbreviations are intended to be used as a guide only and are not intended to be used as a standard.

10. All utility lines and structures shown on this plan are assumed to be in accordance with the standards set forth in the Orange Water and Sewer Authority's Utility Notes. The symbols and abbreviations are intended to be used as a guide only and are not intended to be used as a standard.

UBS-5
STANDARD OWSA NOTES

UBS-5
UTILITY NOTES

1. Symbols and abbreviations are in accordance with the standards set forth in the Orange Water and Sewer Authority's Utility Notes. The symbols and abbreviations are intended to be used as a guide only and are not intended to be used as a standard.

2. All utility lines and structures shown on this plan are assumed to be in accordance with the standards set forth in the Orange Water and Sewer Authority's Utility Notes. The symbols and abbreviations are intended to be used as a guide only and are not intended to be used as a standard.

3. All utility lines and structures shown on this plan are assumed to be in accordance with the standards set forth in the Orange Water and Sewer Authority's Utility Notes. The symbols and abbreviations are intended to be used as a guide only and are not intended to be used as a standard.

4. All utility lines and structures shown on this plan are assumed to be in accordance with the standards set forth in the Orange Water and Sewer Authority's Utility Notes. The symbols and abbreviations are intended to be used as a guide only and are not intended to be used as a standard.

5. All utility lines and structures shown on this plan are assumed to be in accordance with the standards set forth in the Orange Water and Sewer Authority's Utility Notes. The symbols and abbreviations are intended to be used as a guide only and are not intended to be used as a standard.

6. All utility lines and structures shown on this plan are assumed to be in accordance with the standards set forth in the Orange Water and Sewer Authority's Utility Notes. The symbols and abbreviations are intended to be used as a guide only and are not intended to be used as a standard.

7. All utility lines and structures shown on this plan are assumed to be in accordance with the standards set forth in the Orange Water and Sewer Authority's Utility Notes. The symbols and abbreviations are intended to be used as a guide only and are not intended to be used as a standard.

8. All utility lines and structures shown on this plan are assumed to be in accordance with the standards set forth in the Orange Water and Sewer Authority's Utility Notes. The symbols and abbreviations are intended to be used as a guide only and are not intended to be used as a standard.

9. All utility lines and structures shown on this plan are assumed to be in accordance with the standards set forth in the Orange Water and Sewer Authority's Utility Notes. The symbols and abbreviations are intended to be used as a guide only and are not intended to be used as a standard.

10. All utility lines and structures shown on this plan are assumed to be in accordance with the standards set forth in the Orange Water and Sewer Authority's Utility Notes. The symbols and abbreviations are intended to be used as a guide only and are not intended to be used as a standard.

UBS-5
UTILITY NOTES



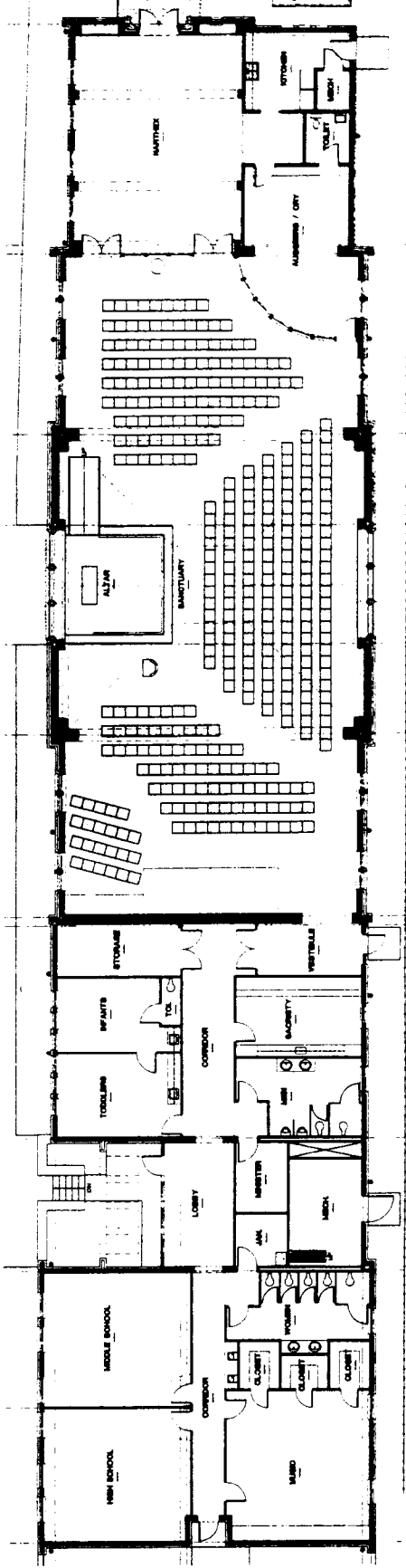
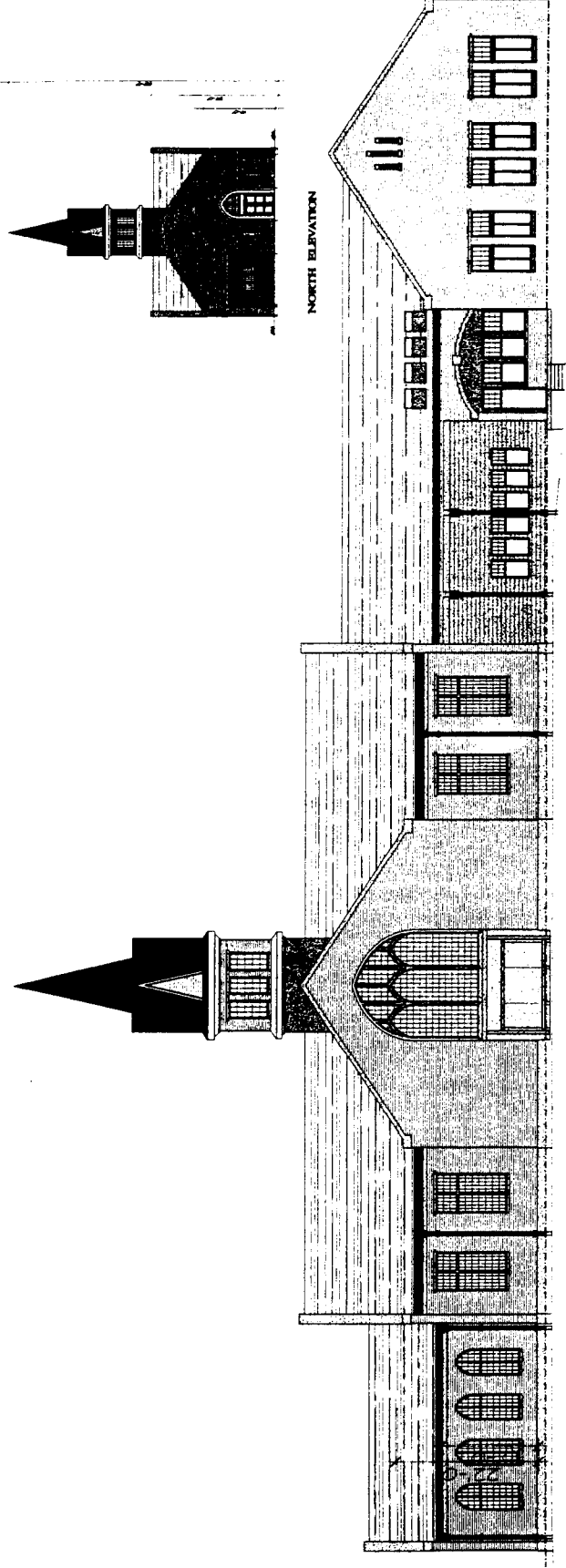
DESIGN DEVELOPMENT - NOT FOR CONSTRUCTION

JULY 6, 2004

MEMBER OF THE AMERICAN INSTITUTE OF ARCHITECTS
MICHAEL HINING ARCHITECTS

REVISIONS AND APPROVALS FOR
KEY TRENCH LUTHERAN CHURCH
CIVIL, MECH, ELEC, PLUMB

64



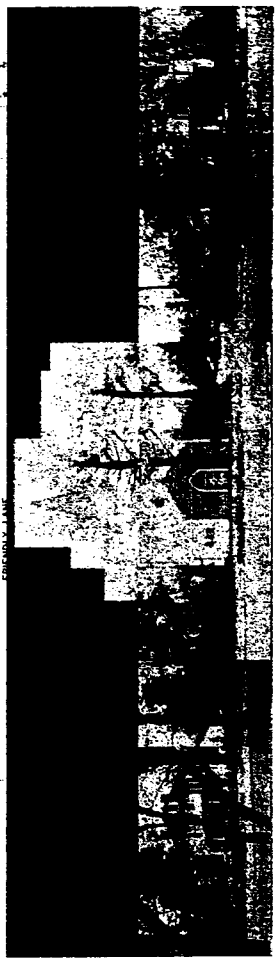
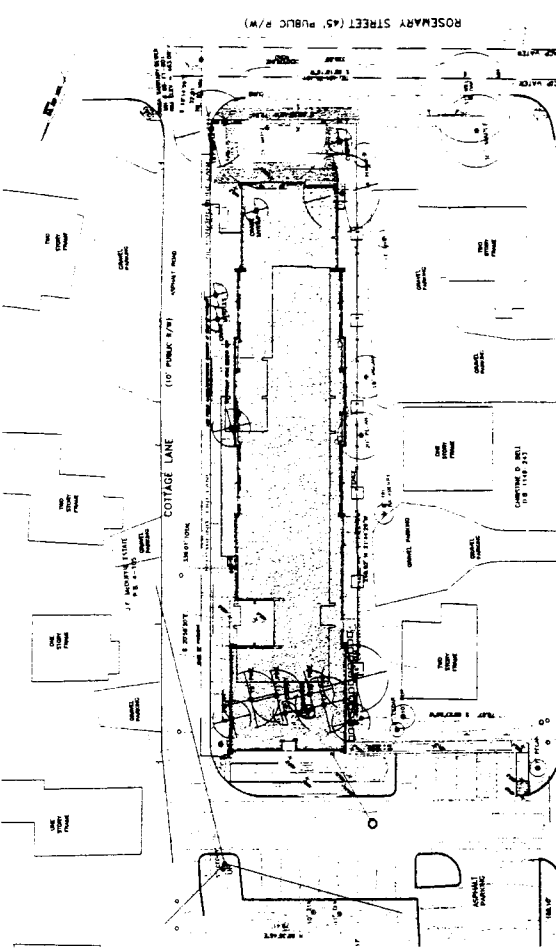
FLOOR PLAN



RENOVATIONS AND ADDITIONS FOR
HOLY TRINITY LUTHERAN CHURCH
 CHARLETTOWN, NORTH CAROLINA

MEMBERS OF THE AMERICAN INSTITUTE OF ARCHITECTS
 MICHAEL HINING ARCHITECTS

ROSEMARY STREET (45' PUBLIC R/W)
 COTTAGE LANE (10' PUBLIC R/W)
 COTTAGE LANE (10' PUBLIC R/W)
 COTTAGE LANE (10' PUBLIC R/W)



65