

ORANGE WATER AND SEWER AUTHORITY

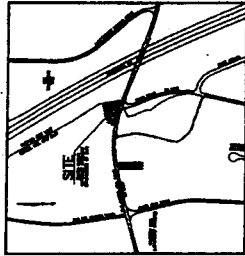
I-40 WATER PUMP STATION

SPECIAL USE PERMIT

I-40 • OLD CHAPEL HILL ROAD
CHAPEL HILL NORTH CAROLINA

DRAWING INDEX

<u>SHEET NUMBER</u>	<u>TITLE</u>
C-1	COVER SHEET
C-2	SITE ANALYSIS
C-3	EXISTING CONDITIONS
C-4	SITE PLAN
C-5	GRADING, DRAINAGE, & EROSION CONTROL PLAN
C-6	UTILITY PLAN
C-7	LANDSCAPE PLAN
C-8	SITE DETAILS
A-1	ARCHITECTURAL BUILDING ELEVATIONS



SITE ANALYSIS
 1. THIS PROJECT IS NOT LOCATED WITHIN A REGULATED AREA.
 2. THERE IS NO EXISTING OR PROPOSED CONSTRUCTION ACTIVITY ON THE SITE. THE APPLICANT WILL HOLD A PERMITS/REGISTRATION COMPLIANCE WITH
 3. THE STATE OF NORTH CAROLINA AND THE STATE OF NORTH CAROLINA THROUGH THE QUALITY STANDARD.
 4. THE PROJECT WILL BE CONDUCTED IN ACCORDANCE WITH THE QUALITY STANDARD.
 5. THE PROJECT WILL BE CONDUCTED IN ACCORDANCE WITH THE QUALITY STANDARD.
 6. THE PROJECT WILL BE CONDUCTED IN ACCORDANCE WITH THE QUALITY STANDARD.
 7. THE PROJECT WILL BE CONDUCTED IN ACCORDANCE WITH THE QUALITY STANDARD.
 8. THE PROJECT WILL BE CONDUCTED IN ACCORDANCE WITH THE QUALITY STANDARD.
 9. THE PROJECT WILL BE CONDUCTED IN ACCORDANCE WITH THE QUALITY STANDARD.
 10. THE PROJECT WILL BE CONDUCTED IN ACCORDANCE WITH THE QUALITY STANDARD.

APPLICANT
 ORANGE WATER AND SEWER AUTHORITY
 400 JONES FERRY ROAD
 CARRBORO, NC 27510
 ATTENTION: MICHAEL JAKUBIAK, EI
 TELEPHONE: 919-988-4421

CONSULTING ARCHITECT

DAVID H. CLINTON, AIA
 MICHAEL HINING ARCHITECTS
 55 VILCOM CIRCLE, SUITE 201
 CHAPEL HILL, NC 27514
 TELEPHONE: 919-967-8631

ARCHITECT / UTILITY ENGINEER

BLACK & VEATCH INTERNATIONAL COMPANY
 P.O. BOX 33396
 RALEIGH, NC 27636
 ATTENTION: MIKE SHAFER, P.E.
 OR RANDALL FOULKE, P.E.
 TELEPHONE: 919-462-7501

CIVIL ENGINEER

HILIP POST & ASSOCIATES
 01 PROVIDENCE ROAD SUITE 200
 CHAPEL HILL, NC 27514
 EL. (919) 929-1173

ATTACHMENT 12

COVER SHEET

ORANGE WATER & SEWER AUTHORITY
 I-40 WATER PUMP STATION



PHILIP POST
 POST
 ASSOCIATES

PHILIP POST & ASSOCIATES
 01 PROVIDENCE ROAD SUITE 200
 CHAPEL HILL, NC 27514
 EL. (919) 929-1173

(31)

PHILIP
POST
ASSOCIATES

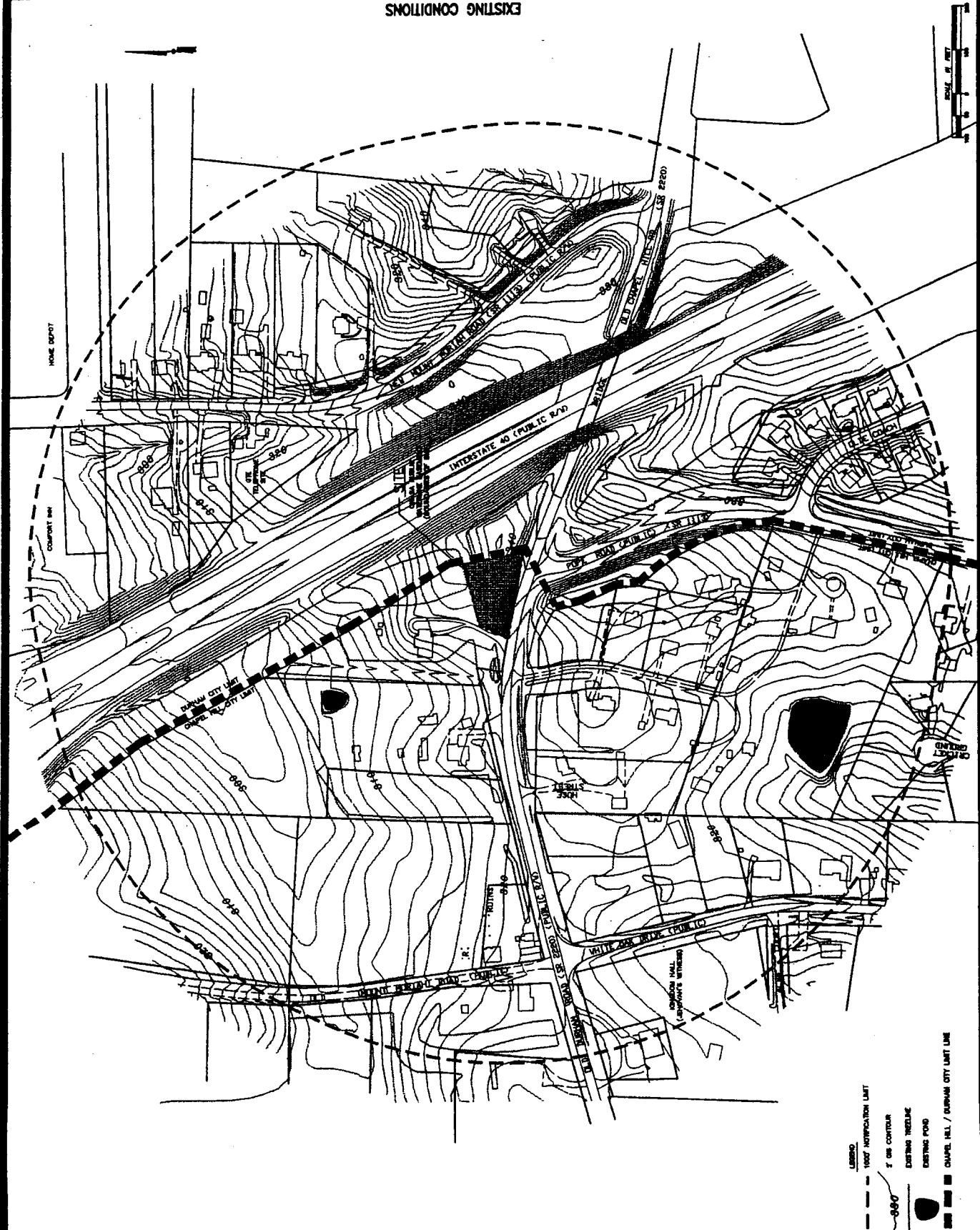
401 Peachtree Road
Atlanta, Georgia 30308
404-525-1172
404-525-1173
404-525-1174
404-525-1175
404-525-1176
404-525-1177
404-525-1178
404-525-1179
404-525-1180
404-525-1181
404-525-1182
404-525-1183
404-525-1184
404-525-1185
404-525-1186
404-525-1187
404-525-1188
404-525-1189
404-525-1190
404-525-1191
404-525-1192
404-525-1193
404-525-1194
404-525-1195
404-525-1196
404-525-1197
404-525-1198
404-525-1199
404-525-1200



SITE ANALYSIS (82)

ORANGE WATER & SEWER AUTHORITY
OLD DURHAM ROAD PUMP STATION
ORANGE COUNTY, NC

DATE: 10/15/2024
DRAWN BY: J.P.
CHECKED BY: M.S.
SCALE: AS SHOWN
PROJECT NO.: 24-001
SHEET NO.: 1 OF 1



VICINITY MAP
AS SHOWN

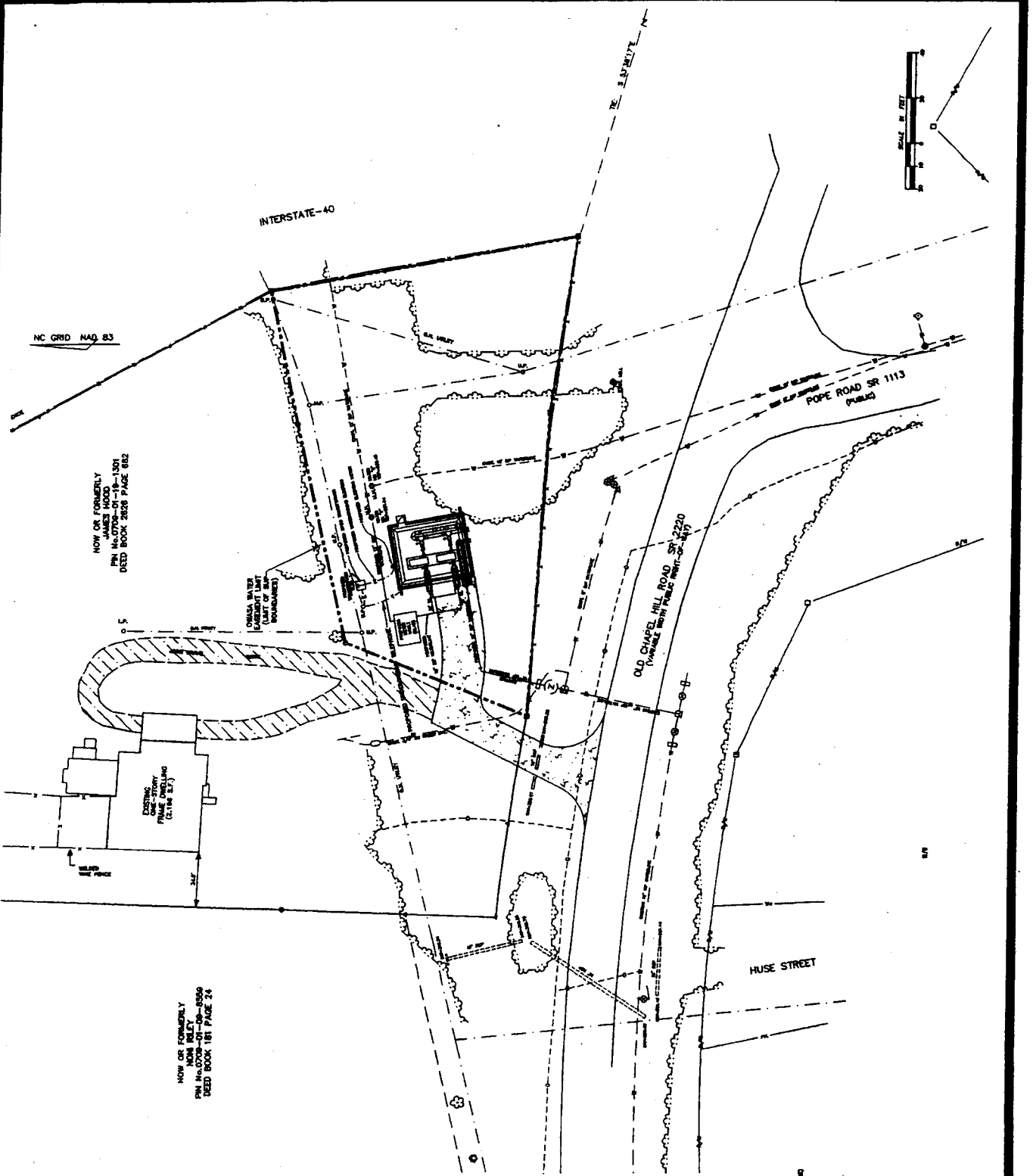
- LEGEND
- 100' NOTIFICATION LIMIT
 - - - 5' G.S. CONTOUR
 - EXISTING TRAILLINE
 - EXISTING POND
 - ORANGE H.L. / DURHAM CITY LIMIT LINE

PHILIP
POST
ASSOCIATES
INC.
1000 W. MAIN ST.
RALEIGH, NC 27601
TEL: (919) 876-1174
FAX: (919) 876-1175
WWW.PHILIPPOST.COM



ORANGE WATER & SEWER AUTHORITY
1-40 WATER PUMP STATION
DURHAM COUNTY, NC

DATE: 12/15/09
DRAWN BY: JAC
CHECKED BY: JAC
SCALE: AS SHOWN
PROJECT NO.: 09010
SHEET NO.: 35



NOW OR FORMERLY
JAMES MOOD
PIN No. 0709-01-19-1301
DEED BOOK 2628 PAGE 682

NOW OR FORMERLY
MON RILEY
PIN No. 0709-01-06-8900
DEED BOOK 181 PAGE 24

- UTILITY LINES
- EXISTING GROUND SURFACE
 - EXISTING ASPHALT SURFACE
 - PROPOSED PUMP STATION BUILDING FOOTPRINT
 - PROPOSED CONCRETE SURFACE
 - 4' x 8' WOODEN DECK
 - 12' x 12' CONCRETE PAD
 - PROPOSED 12' x 12' CONCRETE PAD
 - PROPOSED 12' x 12' CONCRETE PAD
 - PROPOSED 12' x 12' CONCRETE PAD
 - PROPOSED 12' x 12' CONCRETE PAD

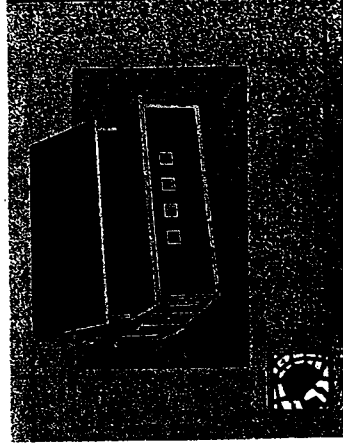
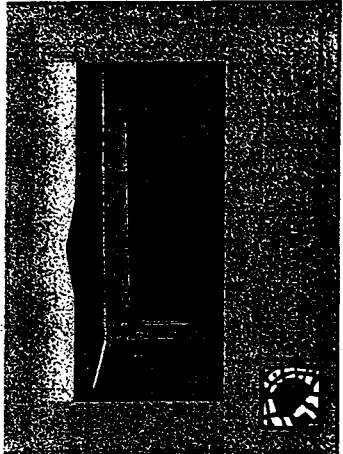
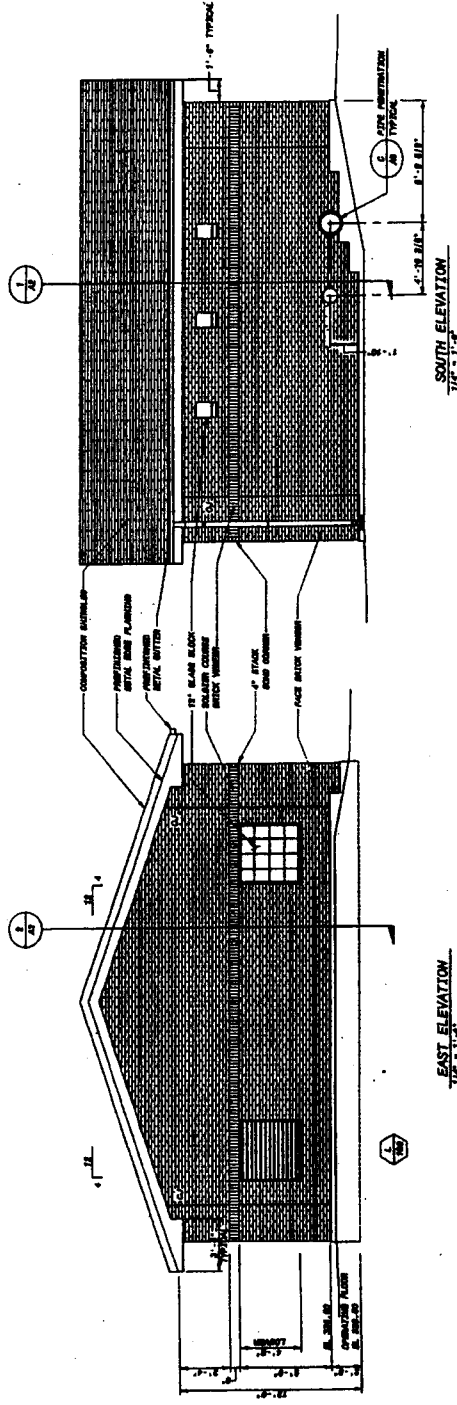
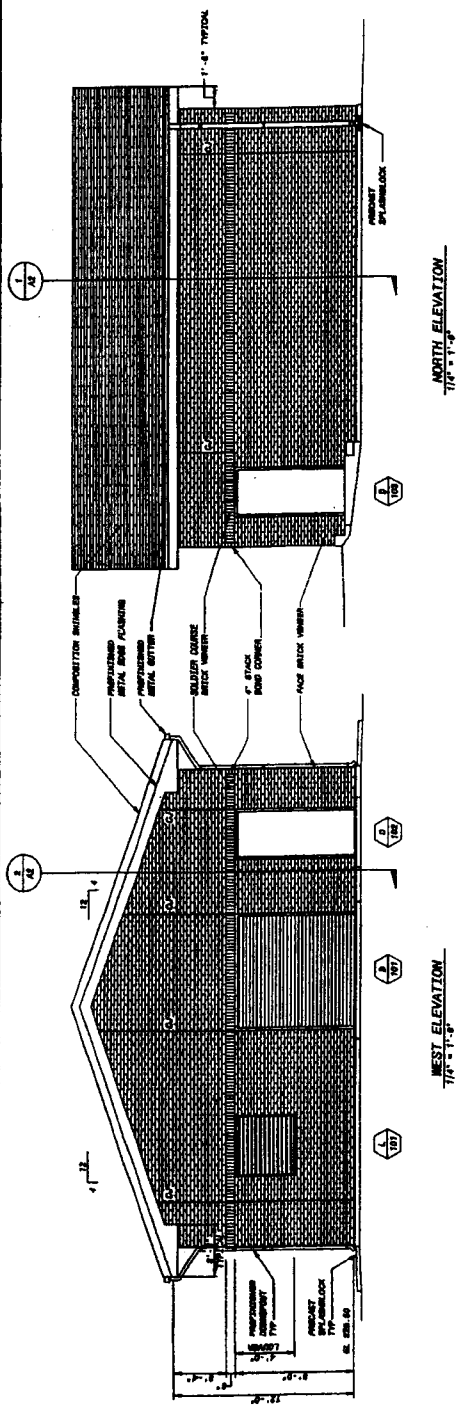
ARCHITECTURAL ELEVATIONS

ORANGE WATER & SEWER AUTHORITY
1-40 WATER PUMP STATION

TOWN OF ORANGE, FLA. DEBRAH COUNTY, FLA.

DATE: 11/15/88
DRAWN BY: J. B. WOOD
CHECKED BY: J. B. WOOD
PROJECT NO.: 88-000
SHEET NO.: 1 OF 1

PHILIP
POST
ASSOCIATES
1000
1000
1000
1000
1000
1000
1000
1000
1000
1000



NOTE: PRELIMINARY ELEVATIONS ARE PROVIDED BY BLACK & VEATCH INTERNATIONAL COMPANY AND BY DEBRAH ENGINE ARCHITECTS.