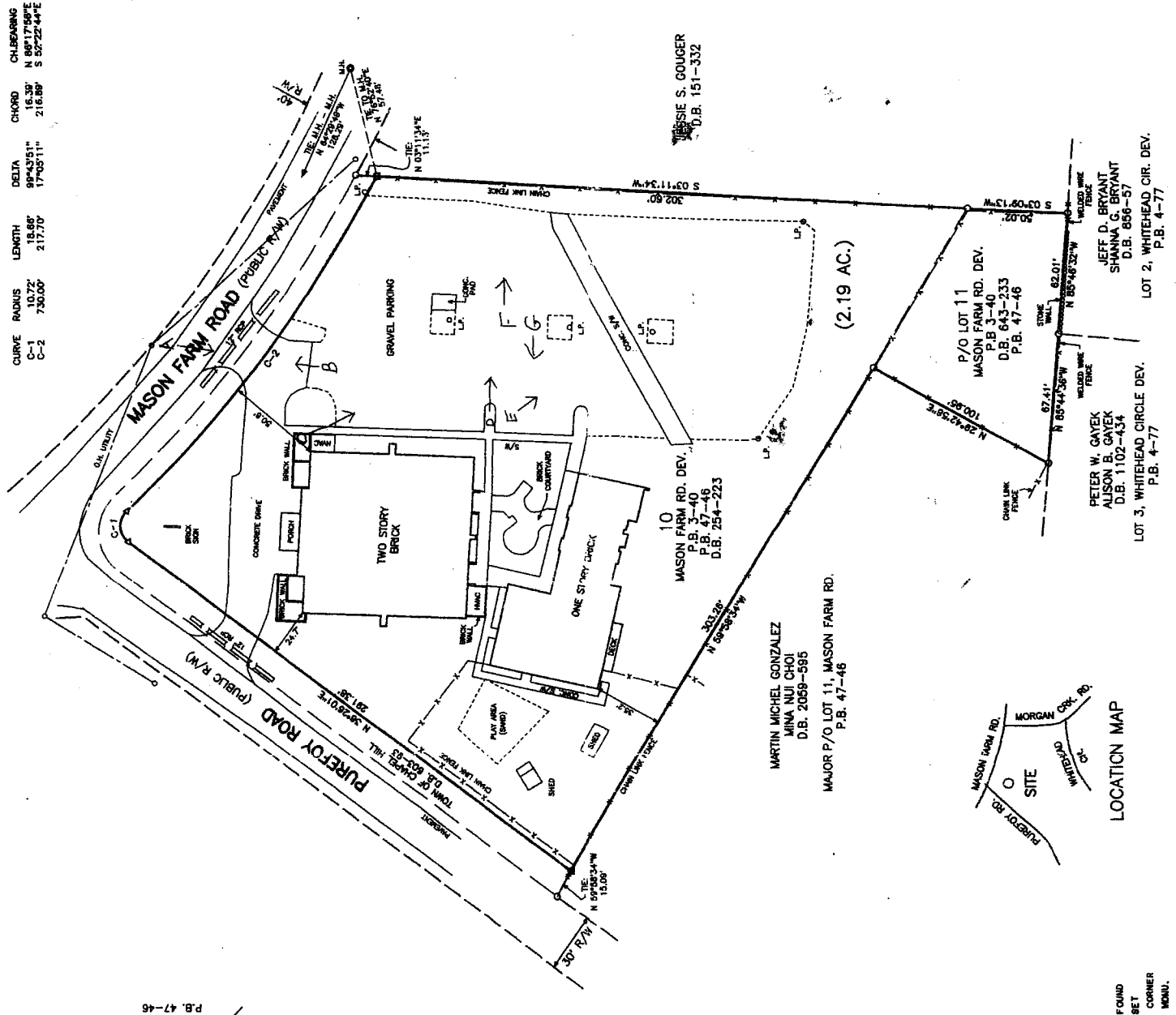


GIS Map prepared by
 Chapel Hill Planning
 April 4, 2005

| CURVE | RADIUS | LENGTH | DELTA | CHORD | CH-BEARING |
|-------|---------|---------|-----------|---------|--------------|
| C-1 | 10.72' | 18.88' | 99°43'51" | 16.39' | N 86°17'58"E |
| C-2 | 730.00' | 217.70' | 17°05'11" | 216.89' | S 52°22'44"E |



I, CHARLES R. BILLINGS, HEREBY CERTIFY THAT UNDER MY DIRECTION AND SUPERVISION THIS MAP WAS DRAWN FROM AN ACTUAL SURVEY MADE UNDER MY SUPERVISION (REFERENCES AS NOTED HEREON); THAT THE ERROR OF CLOSURE CALCULATED BY LATITUDES AND DEPARTURES IS 1:30,000+; THAT THE BOUNDARIES NOT SHOWN ARE SHOWN AS BRACKETS AND ARE NOT TO BE CONSIDERED AS PART OF THIS MAP UNLESS SO INDICATED; AND THAT THIS MAP WAS PREPARED IN ACCORDANCE WITH G.S. 47-30 AS AMENDED.

PLANNED CERTIFICATE:

1. THAT THE SURVEYOR HAS A REASONABLE BELIEF IN THE ACCURACY OF THE INFORMATION CONTAINED IN THIS MAP;
2. THAT THE SURVEYOR HAS A REASONABLE BELIEF IN THE ACCURACY OF THE INFORMATION CONTAINED IN THIS MAP;
3. THAT THE SURVEYOR HAS A REASONABLE BELIEF IN THE ACCURACY OF THE INFORMATION CONTAINED IN THIS MAP;
4. THAT THE SURVEYOR HAS A REASONABLE BELIEF IN THE ACCURACY OF THE INFORMATION CONTAINED IN THIS MAP;
5. THAT THE SURVEYOR HAS A REASONABLE BELIEF IN THE ACCURACY OF THE INFORMATION CONTAINED IN THIS MAP;
6. THAT THE SURVEYOR HAS A REASONABLE BELIEF IN THE ACCURACY OF THE INFORMATION CONTAINED IN THIS MAP;
7. THAT THE SURVEYOR HAS A REASONABLE BELIEF IN THE ACCURACY OF THE INFORMATION CONTAINED IN THIS MAP;
8. THAT THE SURVEYOR HAS A REASONABLE BELIEF IN THE ACCURACY OF THE INFORMATION CONTAINED IN THIS MAP;
9. THAT THE SURVEYOR HAS A REASONABLE BELIEF IN THE ACCURACY OF THE INFORMATION CONTAINED IN THIS MAP;
10. THAT THE SURVEYOR HAS A REASONABLE BELIEF IN THE ACCURACY OF THE INFORMATION CONTAINED IN THIS MAP;

WITNESS MY HAND AND SEAL, SEPTEMBER 11, 2000.

CHARLES R. BILLINGS, PROFESSIONAL LAND SURVEYOR, L-2711

Charles R. Billings

SEAL
 PROFESSIONAL LAND SURVEYOR
 L-2711
 CHARLES R. BILLINGS

25

PROPERTY OF
CHAPEL HILL KEHILLAH
 MASON FARM ROAD
 T.M. 7,71.C.11
 CHAPEL HILL TWP, ORANGE CO.
 NORTH CAROLINA

SCALE: 1" = 40'
 SEPT. 7, 2000