

subject - Brookstone/Chapel Ridge

(19)

ATTACHMENT 7

11/3/02

Mr. Cal Horton, Town Manager
Town of Chapel Hill
Chapel Hill, North Carolina

Dear Mr. Horton,

Enclosed is a packet which I gave to all Town Council members after I spoke to them at the October 7th town meeting.

I know you are very busy with the land use ordinance project, but I beg you to take a few minutes to look at our situation. Also enclosed is a copy of a letter that I wrote to Mayor Sox recently. I hope it helps put things in a "not stull" for you.

We now have a "group" at Brookstone + we are working on our presentation for Nov. 11th. Any help + advice that you could offer would be greatly appreciated. We are trying to protect the safety of our community.

Thanks so much for your time,

Sincerely,
Kristina Bach

phone - 933-3933

20

To whom it may concern,

My name is Kristina Bach. I am representing the residents of Brookstone apartments in Chapel Hill. We are very concerned about the future health and well-being of our community due to the traffic pattern of the nearly finished Chapel Ridge complex next to us.

We are asking you to please change the stipulation that limits public access of Northfield Rd. to emergency use only. We feel that this puts an unfair and hazardous burden on Brookstone. We beg you to please spread the traffic impact out more evenly.

There are two important items that I feel it is important for the council to be informed about at this point:

1) The pedestrian traffic on small Brookstone Rd. is a great percentage of this road's use. Our residents cross this road daily mostly on foot to go to the pool and clubhouse on one side, and to use the dumpster and mail on the other. Our school children cross this road twice daily to get to and from their schoolbus.

2) The Brookstone Rd. entrance and exit onto Homestead Rd. is actually quite dangerous. We must be very careful at all ^{times} items while making turns because of a dip in the road on Homestead to the west. It blocks the view of oncoming traffic.
see map

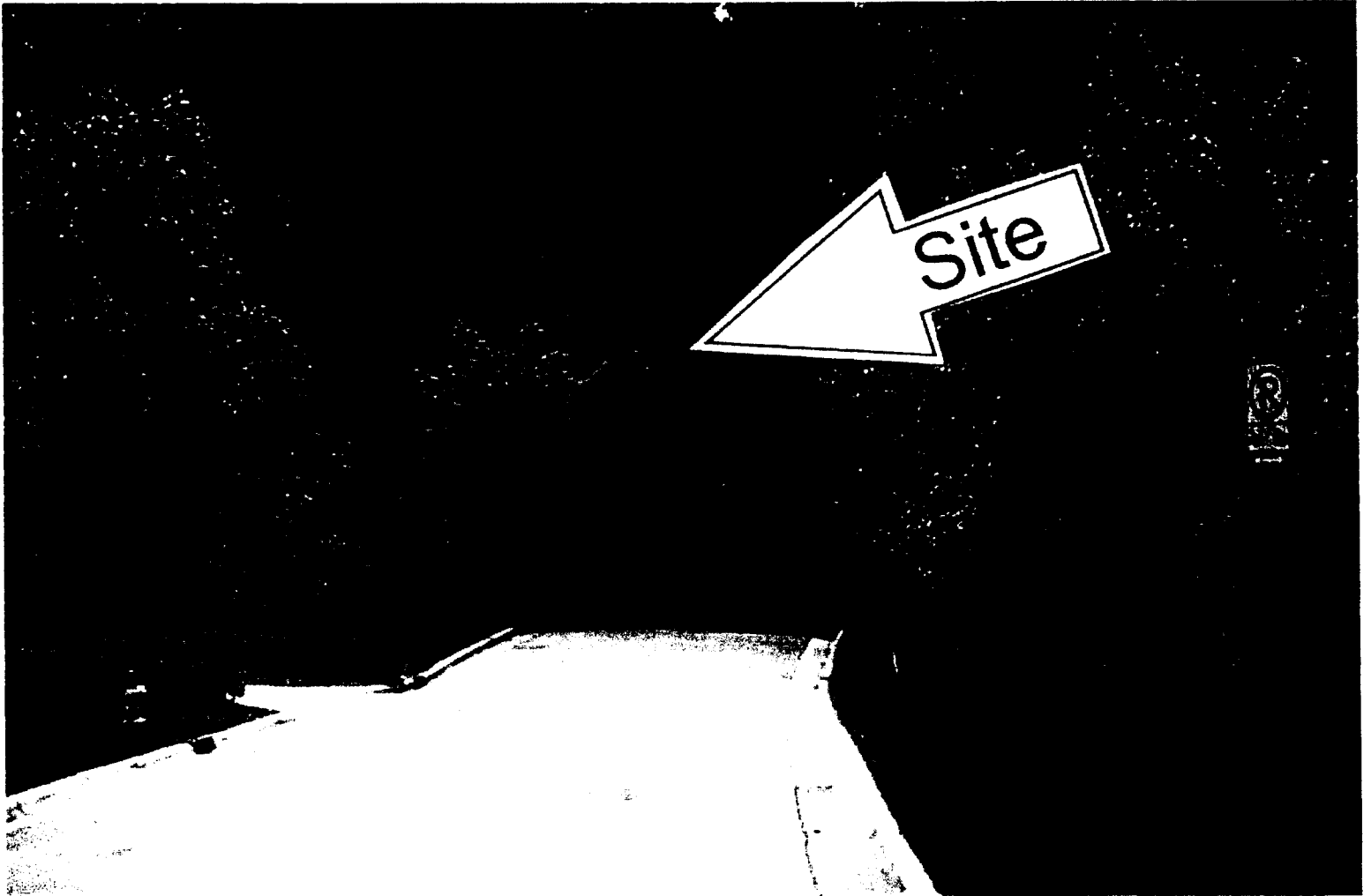
Enclosed are some photos for your convenience as well as a map of our property. If there is anything else I can do to help you understand this unusual situation at Brookstone apts., please let me know.

Very truly yours,



Kristina Bach
2701 Homestead Rd. apt. 208
Chapel hill, NC 27516
919-933-3933

(21)



VIEW FROM BROOKSTONE APARTMENTS STUB-OUT
(LOOKING SOUTH) 2000

22



View from Bredstone Apts 2002

23

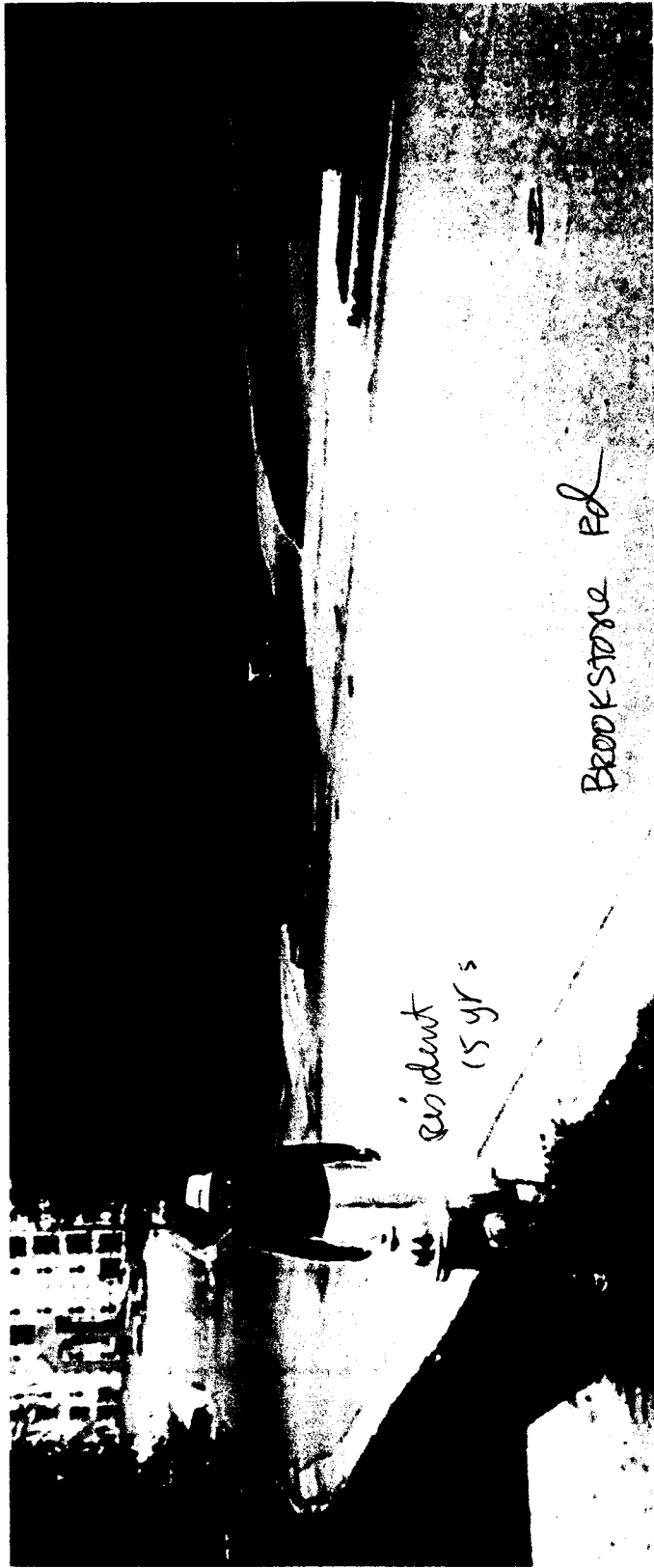


CHILDREN playing in Brookstone

(24)



25



resident
(5 yr's)

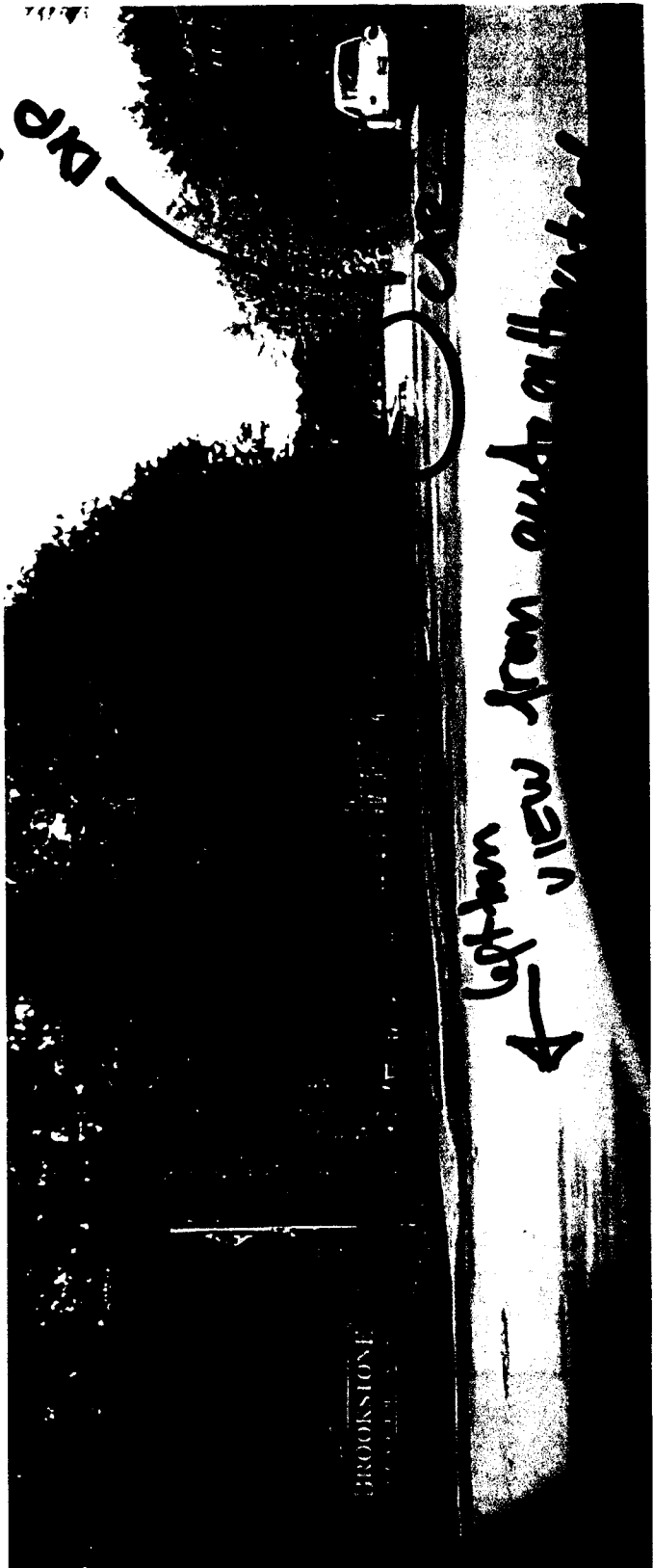
BROOKSTONE Rd

26

BRP

*





← left-hand view from outside entrance

D.P.

(27)

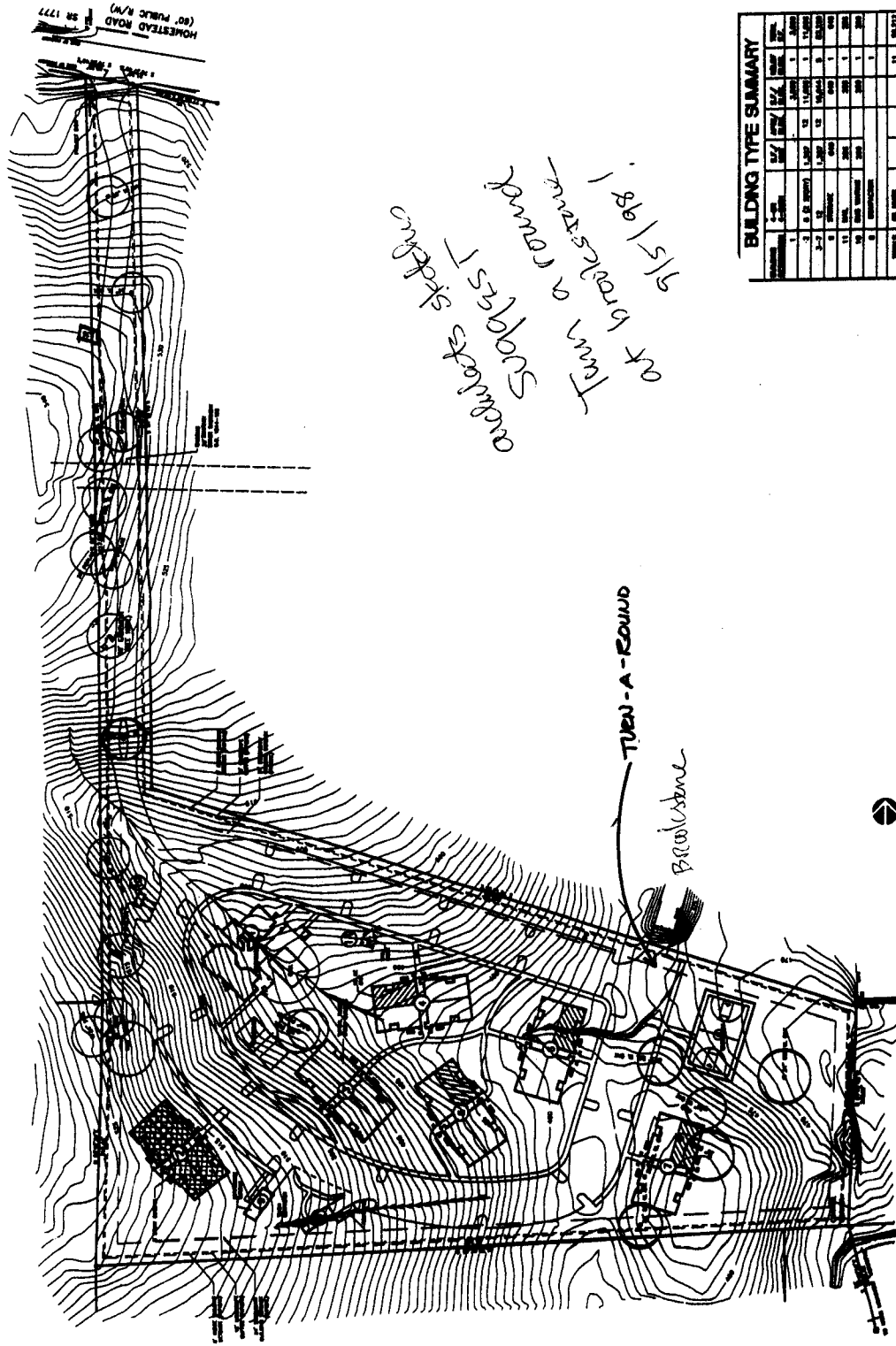
*

BROOKSTONE



28

AIRPORT Rd.



at 9/15/98
 Turn a round
 gravel
 boulders

BUILDING TYPE SUMMARY

NO.	TYPE	AREA (SQ. FT.)	NO. OF UNITS	TOTAL AREA (SQ. FT.)	TOTAL UNITS
1	RESIDENTIAL	1,200	12	1,200	12
2	RESIDENTIAL	1,200	12	1,200	12
3	RESIDENTIAL	1,200	12	1,200	12
4	RESIDENTIAL	1,200	12	1,200	12
5	RESIDENTIAL	1,200	12	1,200	12
6	RESIDENTIAL	1,200	12	1,200	12
7	RESIDENTIAL	1,200	12	1,200	12
8	RESIDENTIAL	1,200	12	1,200	12
9	RESIDENTIAL	1,200	12	1,200	12
10	RESIDENTIAL	1,200	12	1,200	12
11	RESIDENTIAL	1,200	12	1,200	12
12	RESIDENTIAL	1,200	12	1,200	12
13	RESIDENTIAL	1,200	12	1,200	12
14	RESIDENTIAL	1,200	12	1,200	12
15	RESIDENTIAL	1,200	12	1,200	12
16	RESIDENTIAL	1,200	12	1,200	12
17	RESIDENTIAL	1,200	12	1,200	12
18	RESIDENTIAL	1,200	12	1,200	12
19	RESIDENTIAL	1,200	12	1,200	12
20	RESIDENTIAL	1,200	12	1,200	12
21	RESIDENTIAL	1,200	12	1,200	12
22	RESIDENTIAL	1,200	12	1,200	12
23	RESIDENTIAL	1,200	12	1,200	12
24	RESIDENTIAL	1,200	12	1,200	12
25	RESIDENTIAL	1,200	12	1,200	12
26	RESIDENTIAL	1,200	12	1,200	12
27	RESIDENTIAL	1,200	12	1,200	12
28	RESIDENTIAL	1,200	12	1,200	12
29	RESIDENTIAL	1,200	12	1,200	12
30	RESIDENTIAL	1,200	12	1,200	12
31	RESIDENTIAL	1,200	12	1,200	12
32	RESIDENTIAL	1,200	12	1,200	12
33	RESIDENTIAL	1,200	12	1,200	12
34	RESIDENTIAL	1,200	12	1,200	12
35	RESIDENTIAL	1,200	12	1,200	12
36	RESIDENTIAL	1,200	12	1,200	12
37	RESIDENTIAL	1,200	12	1,200	12
38	RESIDENTIAL	1,200	12	1,200	12
39	RESIDENTIAL	1,200	12	1,200	12
40	RESIDENTIAL	1,200	12	1,200	12
41	RESIDENTIAL	1,200	12	1,200	12
42	RESIDENTIAL	1,200	12	1,200	12
43	RESIDENTIAL	1,200	12	1,200	12
44	RESIDENTIAL	1,200	12	1,200	12
45	RESIDENTIAL	1,200	12	1,200	12
46	RESIDENTIAL	1,200	12	1,200	12
47	RESIDENTIAL	1,200	12	1,200	12
48	RESIDENTIAL	1,200	12	1,200	12
49	RESIDENTIAL	1,200	12	1,200	12
50	RESIDENTIAL	1,200	12	1,200	12

PRELIMINARY ARCHITECTURAL SITE PLAN

SCALE: 1"=60'-0"

DATE: 9/15/98

PROJECT NO. 98-01

at 9/15/98

NORTHEFIELD RD

AIRPORT RD

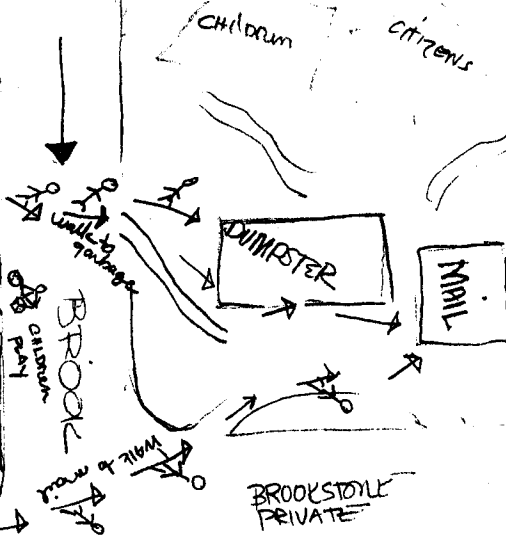
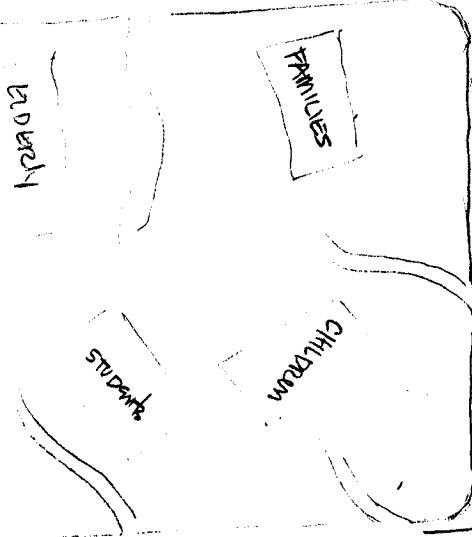
CHAPEL RIDGE

STUDENT "DORM"
HOUSING
NOT SIMILAR USE

500 bedrooms /
370 parking
180 dining units

BROOKSTONE PRIVATE

BROOKSTONE PRIVATE

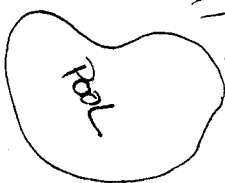


BROOKSTONE PRIVATE

BROOKSTONE PRIVATE

TEEN/18

CUB HOUSE
BROOKSTONE
WORK OUT ROOM



VALE PORTARS

DIP 1
10 REAR
blocks
view