



**Photo 1**  
Facing south on Erwin



**Photo 2**  
Facing north on Erwin



**Photo 3**  
Facing sewer/greenway  
just south of site  
across Erwin

**Site Photos**

Erwin Road Subdivision  
Chapel Hill, North Carolina

**Grande Park, LLC**

**THE JOHN R. McADAMS  
COMPANY, INC.**



ENGINEERS PLANNERS SURVEYORS  
POST OFFICE BOX 14005  
RESEARCH TRIANGLE PARK, NORTH CAROLINA 27709  
(919) 361-5000



**Photo 4**  
Facing east along  
greenway south of site



**Photo 5**  
Facing east along  
Duke Power  
easement (toward I-40)



**Photo 6**  
Facing west on access  
road, north side of  
Duke Power easement

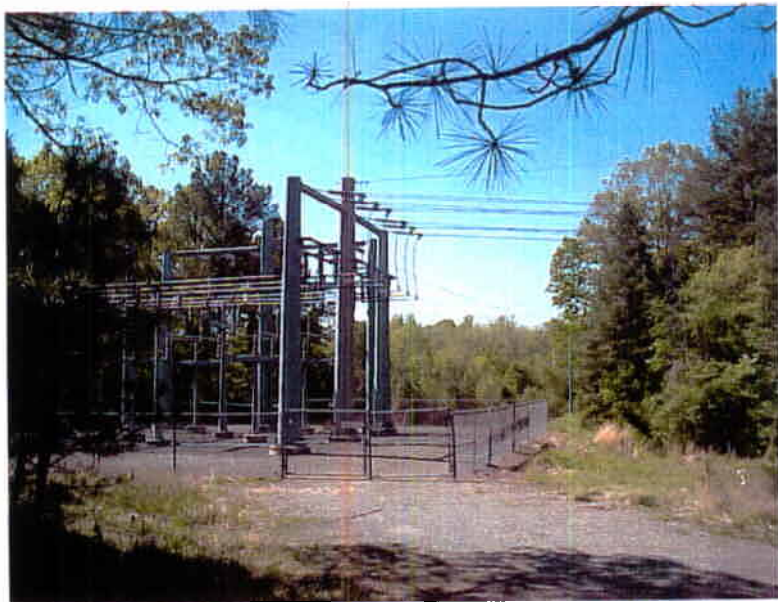
**Site Photos**

Erwin Road Subdivision  
Chapel Hill, North Carolina  
**Grande Park, LLC**

**THE JOHN R. McADAMS  
COMPANY, INC.**



ENGINEERS/PLANNERS/SURVEYORS  
POST OFFICE BOX 14605  
RESEARCH TRIANGLE PARK, NORTH CAROLINA 27709  
(919) 361-5000



**Photo 7**  
Facing south toward  
Duke Power  
substation



**Photo 8**  
Facing north from  
Duke Power  
substation



**Photo 9**  
Facing east across I-40  
from rear of northern-  
most parcel (26..36A)

**Site Photos**

Erwin Road Subdivision  
Chapel Hill, North Carolina

**Grande Park, LLC**

**THE JOHN R. McADAMS  
COMPANY, INC.**



ENGINEERS/PLANNERS/SURVEYORS  
POST OFFICE BOX 14005  
RESEARCH TRIANGLE PARK, NORTH CAROLINA 27709  
(919) 361-5000



**Photo 10**  
Facing north toward  
1-40 on Erwin, from  
mouth of access road  
on northern-most parcel  
(26..36A)



**Photo 11**  
Entrance to Englewood  
Subdivision, south of  
site

**Site Photos**

Erwin Road Subdivision  
Chapel Hill, North Carolina

**Grande Park, LLC**

**THE JOHN R. McADAMS  
COMPANY, INC.**



ENGINEERS/PLANNERS/SURVEYORS  
POST OFFICE BOX 14005  
RESEARCH TRIANGLE PARK, NORTH CAROLINA 27709  
(919) 361-5000