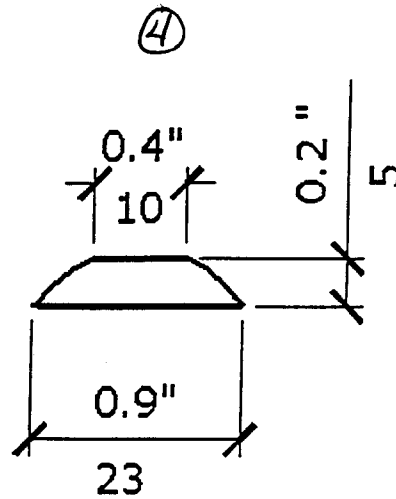
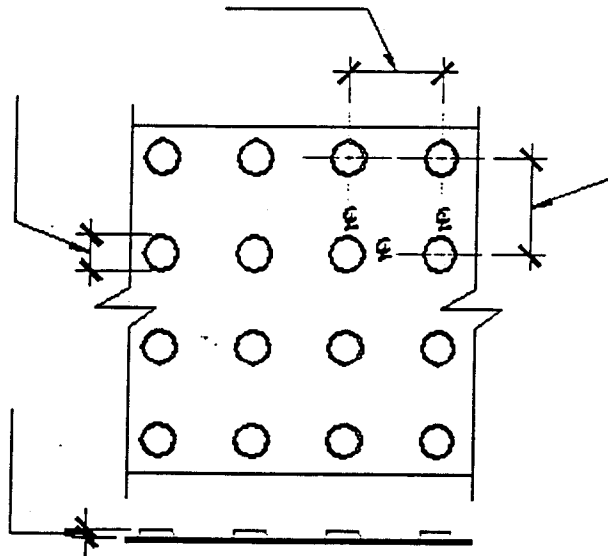


Figure X02.5 N Dome Section



*Section of dome from a detectable warning. Drawing shows height, top and bottom dimensions.*

Figure X02.5 O Dome Spacing



*Plan and section views of detectable warning domes and their relative spacing on the x and y axis.*

**Discussion:** The size and spacing of the domes affect detectability by pedestrians who are blind. This specification is much more detailed than that in the current ADAAG, and offers much less latitude in dimensions and spacing. It ensures that the dome spacing is the maximum currently known to be consistent with high detectability. The diameter measurement