

NOTES
 1. TREES SHOWN ARE BASED ON A TREE SURVEY UPDATE PREPARED BY BALLENTINE ASSOCIATES, DATED SEPTEMBER 20, 2018.

BALLENTINE ASSOCIATES, P.A.
 228 PROVIDENCE ROAD, CHAPEL HILL, N.C. 27514
 919.332.0201

PROFESSIONAL SEAL
 REGISTERED PROFESSIONAL ARCHITECT
 STATE OF NORTH CAROLINA
 EXPIRES 12/31/2024
 BALLENTINE ASSOCIATES, P.A.
 228 PROVIDENCE ROAD, CHAPEL HILL, N.C. 27514
 919.332.0201

PROFESSIONAL SEAL
 REGISTERED PROFESSIONAL ENGINEER
 STATE OF NORTH CAROLINA
 EXPIRES 12/31/2024
 BALLENTINE ASSOCIATES, P.A.
 228 PROVIDENCE ROAD, CHAPEL HILL, N.C. 27514
 919.332.0201

PROFESSIONAL SEAL
 REGISTERED PROFESSIONAL LANDSCAPE ARCHITECT
 STATE OF NORTH CAROLINA
 EXPIRES 12/31/2024
 BALLENTINE ASSOCIATES, P.A.
 228 PROVIDENCE ROAD, CHAPEL HILL, N.C. 27514
 919.332.0201

DATE
 18 FEB 22
 10 JAN 22

REVISIONS
 THE DACP REVIEW COMMITTEE & CLIENT REVISION

OWNER INFORMATION
 DAWN PROPERTIES
 117 COLUMBUS SOUTH DRIVE
 SUITE 110
 CHAPEL HILL, NC 27511
 OWNER'S REPRESENTATIVE
 NAME
 TITLE
 PHONE
 FAX

DATE
 18 FEB 22
 10 JAN 22

REVISIONS
 DAWN PROPERTIES
 117 COLUMBUS SOUTH DRIVE
 SUITE 110
 CHAPEL HILL, NC 27511
 OWNER'S REPRESENTATIVE
 NAME
 TITLE
 PHONE
 FAX

DATE
 18 FEB 22
 10 JAN 22

REVISIONS
 DAWN PROPERTIES
 117 COLUMBUS SOUTH DRIVE
 SUITE 110
 CHAPEL HILL, NC 27511
 OWNER'S REPRESENTATIVE
 NAME
 TITLE
 PHONE
 FAX

DATE
 18 FEB 22
 10 JAN 22

REVISIONS
 DAWN PROPERTIES
 117 COLUMBUS SOUTH DRIVE
 SUITE 110
 CHAPEL HILL, NC 27511
 OWNER'S REPRESENTATIVE
 NAME
 TITLE
 PHONE
 FAX

DATE
 18 FEB 22
 10 JAN 22

REVISIONS
 DAWN PROPERTIES
 117 COLUMBUS SOUTH DRIVE
 SUITE 110
 CHAPEL HILL, NC 27511
 OWNER'S REPRESENTATIVE
 NAME
 TITLE
 PHONE
 FAX

DATE
 18 FEB 22
 10 JAN 22

REVISIONS
 DAWN PROPERTIES
 117 COLUMBUS SOUTH DRIVE
 SUITE 110
 CHAPEL HILL, NC 27511
 OWNER'S REPRESENTATIVE
 NAME
 TITLE
 PHONE
 FAX

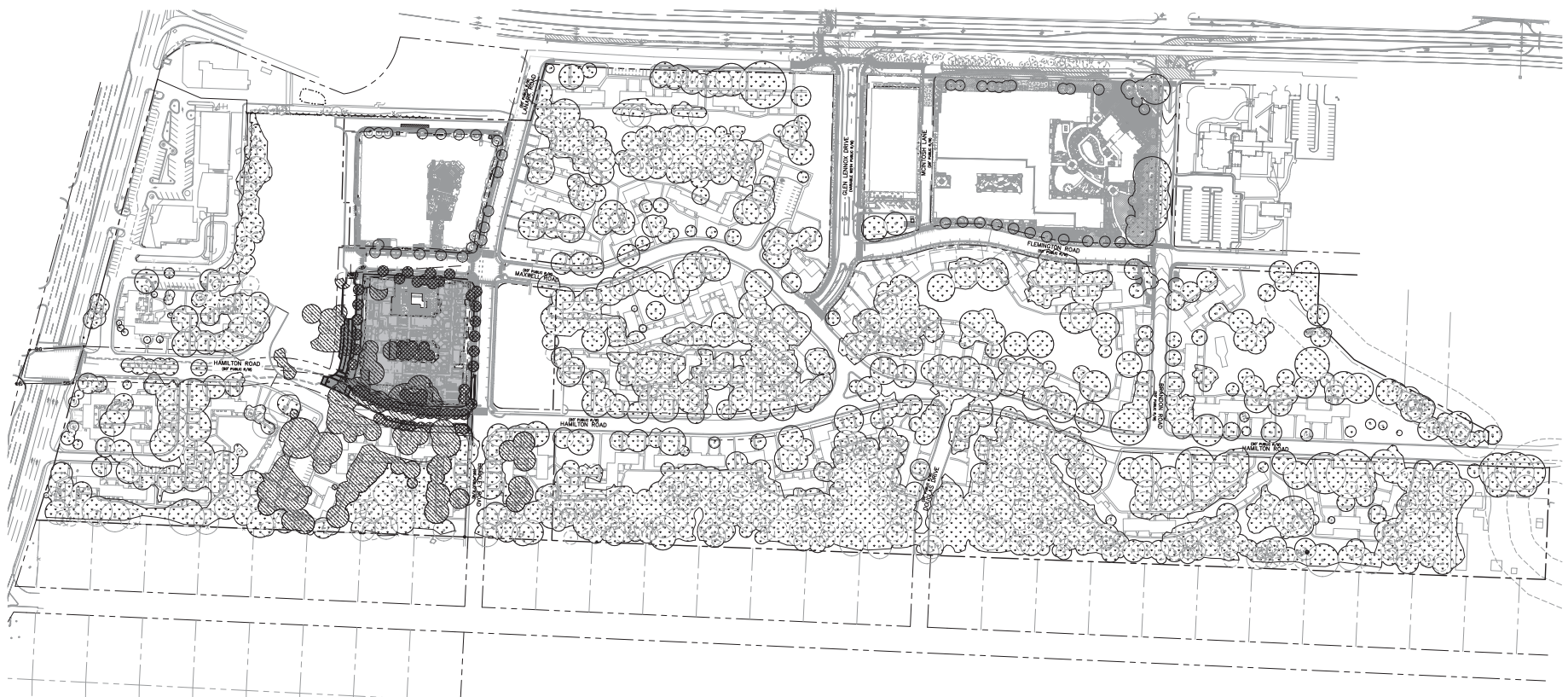
DATE
 18 FEB 22
 10 JAN 22

REVISIONS
 DAWN PROPERTIES
 117 COLUMBUS SOUTH DRIVE
 SUITE 110
 CHAPEL HILL, NC 27511
 OWNER'S REPRESENTATIVE
 NAME
 TITLE
 PHONE
 FAX

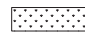


DATE
 18 FEB 22
 10 JAN 22

REVISIONS
 DAWN PROPERTIES
 117 COLUMBUS SOUTH DRIVE
 SUITE 110
 CHAPEL HILL, NC 27511
 OWNER'S REPRESENTATIVE
 NAME
 TITLE
 PHONE
 FAX

DATE
 18 FEB 22
 10 JAN 22



DRAWING LEGEND

-  EXISTING TREE CANOPY
-  PROPOSED NEW TREE CANOPY
-  DEMO TREE CANOPY



OVERALL GLEN LENNOX TREE CANOPY COVERAGE

(GRAPHIC SCALE IN FEET)
 1 inch = 500 ft.

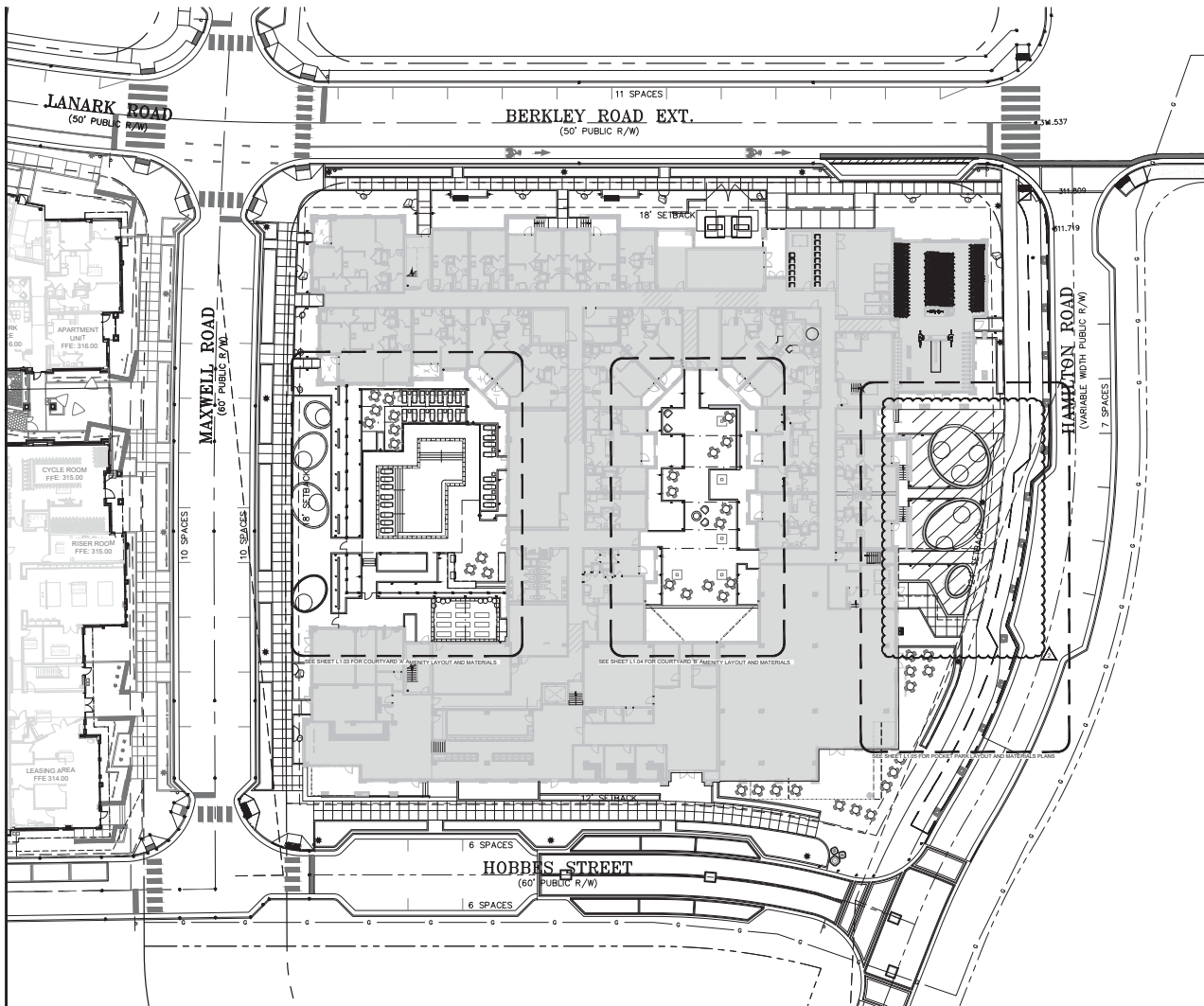
TREE CANOPY COVERAGE TABLE		
TOTAL PROPERTY AREA:	3,091,869 S.F.	70.98 AC.
NET PROPERTY AREA (LESS P.D.W., UTILITY EASEMENT, ACTIVE RECREATIONS):	2,858,701 S.F.	65.65 AC. (92.44%)
TREE CANOPY REQUIRED:	807,910 S.F.	18.49 AC. (30%)
EXISTING TREE CANOPY:	1,415,694 S.F.	32.20 AC. (45.78%)
DEMO TREE CANOPY:	108,385 S.F.	2.51 AC. (3.54%)
PROPOSED NEW TREE CANOPY:	26,233 S.F.	0.60 AC. (0.85%)
TOTAL TREE CANOPY PROVIDED:	1,332,042 S.F.	30.59 AC. (43.10%)

REVIEW DRAWING
 NOT FOR CONSTRUCTION

LINK APARTMENTS CALYX II
 GLEN LENNOX - BLOCK 4 - PHASE 2
 CHAPEL HILL, NC
 DACP EXHIBITS

JOB # 10703.41
 DATE: 18 FEB 22
 SCALE: AS NOTED
 DRAWN BY: D.W.S.
 REVIEWED BY: G.L.S.

SHEET
 C1008-2



PARK SPACE

REQUIREMENTS.

PER SECTION 5.7C, PARK SPACE, OF THE DEVELOPMENT AGREEMENT, THE DEVELOPMENT (AS A WHOLE) SHALL INCLUDE A MINIMUM OF 1.5 ACRES OF PARK SPACE THAT WILL BE AVAILABLE TO THE PUBLIC UPON COMPLETION OF THE (TOTAL) DEVELOPMENT.

1. THE PARK SPACE SHALL BE COMPLETED AS FOLLOWS:
 - 1.1. A TOTAL OF 3.8 ACRES OF PARK SPACE AND THE GREENWAY SHALL BE COMPLETED NO LATER THAN THE DEVELOPMENT OF 30% OF THE LAND IN BLOCKS 1-9 AS SHOWN IN EXHIBIT B (OF THE DEVELOPMENT AGREEMENT).
 - 1.2. A TOTAL OF 1 ACRE OF PARK SPACE SHALL BE COMPLETED NO LATER THAN THE DEVELOPMENT OF 50% OF THE LAND IN BLOCKS 1-9 AS SHOWN ON EXHIBIT B (OF THE DEVELOPMENT AGREEMENT).
 - 1.3. A TOTAL OF 1.5 ACRES OF PARK SPACE MUST BE COMPLETED NO LATER THAN THE DEVELOPMENT OF 80% OF THE LAND IN BLOCKS 1-9 AS SHOWN ON EXHIBIT B (OF THE DEVELOPMENT AGREEMENT).
2. AT A MINIMUM, THE PARK SPACE SHALL INCLUDE GREEN ENTRANCES IN THE NEIGHBORHOOD, A CENTRAL COMMUNITY OPEN SPACE, A GREENWAY AND POCKET PARKS SITUATED THROUGHOUT THE DEVELOPMENT.
3. THE PARK SPACE SHALL INCLUDE ACTIVE AND PASSIVE RECREATION SPACES.

PROPOSED BLOCK 4:

- PER EXHIBIT H, PAGE 63, OF THE DEVELOPMENT AGREEMENT, PARK SPACES ARE NOT REQUIRED WITHIN THE DEVELOPMENT OF BLOCK 4.
- BLOCK 4 IS PROVIDING 0.94 ACRES OF PUBLIC OPEN POCKET PARK SPACE ALONG HAMILTON STREET

PARK SPACE PROVIDED

LITTLE
 615 South College Street, Suite 1000
 Charlotte, NC 28202
 T: 704.252.6728
 www.littleonline.com

This drawing and its design shows are the property of Little Environmental Architecture of Charlotte, NC. Reproduction, copying or other use of this drawing, without their express written permission, and any infringement will be subject to legal action.

GRUBB PROPERTIES

APPROVED FOR CONSTRUCTION
 CERT. NO. 50033
 CHAPEL HILL, NC

APPROVED FOR CONSTRUCTION
 885
 CHAPEL HILL, NC

DACP SUBMITTAL #3

02/18/2022

NO.	REVISION	DATE
1	PER DACP REVIEW	
2	PER DACP REVIEW	
3	PER DACP REVIEW	
4	PER DACP REVIEW	
5	PER DACP REVIEW	
6	PER DACP REVIEW	
7	PER DACP REVIEW	
8	PER DACP REVIEW	
9	PER DACP REVIEW	
10	PER DACP REVIEW	
11	PER DACP REVIEW	
12	PER DACP REVIEW	
13	PER DACP REVIEW	
14	PER DACP REVIEW	
15	PER DACP REVIEW	
16	PER DACP REVIEW	
17	PER DACP REVIEW	
18	PER DACP REVIEW	
19	PER DACP REVIEW	
20	PER DACP REVIEW	
21	PER DACP REVIEW	
22	PER DACP REVIEW	
23	PER DACP REVIEW	
24	PER DACP REVIEW	
25	PER DACP REVIEW	
26	PER DACP REVIEW	
27	PER DACP REVIEW	
28	PER DACP REVIEW	
29	PER DACP REVIEW	
30	PER DACP REVIEW	
31	PER DACP REVIEW	
32	PER DACP REVIEW	
33	PER DACP REVIEW	
34	PER DACP REVIEW	
35	PER DACP REVIEW	
36	PER DACP REVIEW	
37	PER DACP REVIEW	
38	PER DACP REVIEW	
39	PER DACP REVIEW	
40	PER DACP REVIEW	
41	PER DACP REVIEW	
42	PER DACP REVIEW	
43	PER DACP REVIEW	
44	PER DACP REVIEW	
45	PER DACP REVIEW	
46	PER DACP REVIEW	
47	PER DACP REVIEW	
48	PER DACP REVIEW	
49	PER DACP REVIEW	
50	PER DACP REVIEW	

PROJECT ARCHITECT: DAVID POWLEN
 PROJECT ARCHITECT: ANNA WALKER
 PROJECT ARCHITECT: ANNA WALKER

LINK APARTMENTS CALYX II
 GLEN LENNOX - BLOCK 4
 CHAPEL HILL, NC

101.16446.00
 PARKS PLAN

L1.00

CAUTION!!!

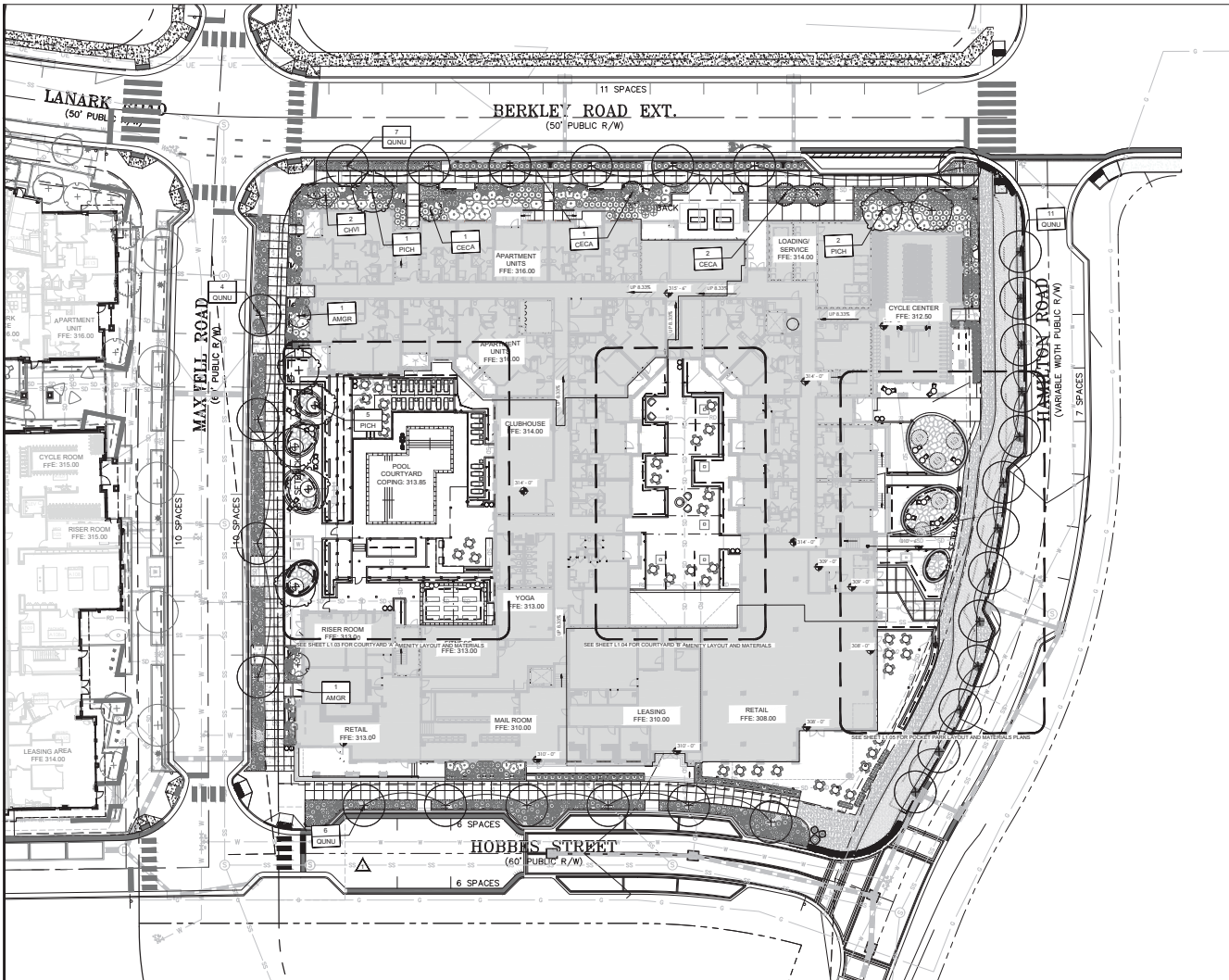
THE LOCATIONS AND ELEVATIONS OF EXISTING UNDERGROUND UTILITIES AS SHOWN ON THIS DRAWING ARE ONLY APPROXIMATE. NO GUARANTEE IS EITHER EXPRESS OR IMPLIED AS TO THE COMPLETENESS OF ACCURACY THEREOF. THE CONTRACTOR SHALL BE EXCLUSIVELY RESPONSIBLE FOR DETERMINING THE EXACT UTILITY LOCATIONS AND ELEVATIONS PRIOR TO THE START OF CONSTRUCTION.

GRAPHIC SCALE

1" = 20'-0"

NORTH





PLANT SCHEDULE STREETScape						
TREES	CODE	BOTANICAL / COMMON NAME	ROOT	GAL	SIZE	QTY
	PIST	PISTACIA CHENSIS CHINESE PISTACHE MATCHED SPECIMENS	B&B	2" MIN.	10-12' HT.	8
	QUER	QUERCUS NUTTALLII NUTTALL OAK MATCHED SPECIMENS	B&B	3" MIN.	12-15' HT.	25
UNDERSTORY	CODE	BOTANICAL / COMMON NAME	ROOT	CAL	SIZE	QTY
	AMGR	AMELANCHER X GRANDIFLORA 'AUTUMN BRILLIANCE' AUTUMN BRILLIANCE APPLE SERVICEBERRY MATCHED SPECIMENS	B&B		8-10' HT.	2
	CECA	CERCIS CANADENSIS EASTERN REDBUD MATCHED SPECIMENS	B&B		5-10' HT.	4
	CHVI	CHONANTHUS VIRGINICUS WHITE FRINGE TREE MATCHED SPECIMENS, MULTI-TRUNK	B&B		6-8' HT.	2
SHRUBS	CODE	BOTANICAL / COMMON NAME	CONT.	SIZE	SPACING	
	CADC	CALLICARPA DICHOTOMA PURPLE BEAUTYBERRY	CONT.	24" - 30" HT. / SPR.	48" o.c.	5
	CENA	CEPHALOTAXUS HARRINGTONIA DUKE GARDENS DUKE GARDENS PLUM YEW	CONT.	18" - 24" HT. / SPR.	36" o.c.	124
	DIVI	DIPTYLUM X 'VINTAGE JADE' VINTAGE JOSE DIPTYLUM	CONT.	24" - 30" HT. / SPR.	36" o.c.	5
	HAVI	HAMAMELIS VIRGINIANA 'LITTLE SUZIE' LITTLE SUZIE WITCH HAZEL	CONT.	30" - 36" HT. / SPR.	60" o.c.	19
	HYDU	HYDRANGEA QUERCIFOLIA OAKLEAF HYDRANGEA	CONT.	30" - 36" HT. / SPR.	48" o.c.	39
	PRGL	PRUNUS LAUROCEARASUS 'OTTO LUYKEN' OTTO LUYKEN ENGLISH LAUREL	CONT.	30" - 36" HT. / SPR.	36" o.c.	5
	YUFI	YUCCA FILAMENTOSA 'EXCALIBUR' EXCALIBUR ADAMS NEEDLE	CONT.	12" - 18" HT. / SPR.	36" o.c.	12
GRASSES	CODE	BOTANICAL / COMMON NAME	CONT.	SIZE	SPACING	
	CAAC	CALAMAGRODSTIS X ACUTIFLORA 'KARL FOERSTER' KARL FOERSTER FEATHER REED GRASS	CONT.	18" - 24" HT. / SPR.	24" o.c.	272
	MUCA	MUHLENBERGIA CAPILLARIS 'WHITE CLOUD' WHITE CLOUD MUHLY GRASS	CONT.	18" - 24" HT. / SPR.	36" o.c.	148
	PEAL	PERNISCETUM ALPECUROIDES 'CASSIAN'S CHOICE' CASSIAN	CONT.	12" - 18" HT. / SPR.	24" o.c.	190
	SPHE	SPOROBOLUS HETEROLEPIS PRAIRIE DROPSSEED	CONT.	18" - 24" HT. / SPR.	36" o.c.	191
PERENNIALS	CODE	BOTANICAL / COMMON NAME	CONT.	SIZE	SPACING	
	COVE	COREOPSIS VERTICILLATA 'ZAGREP' ZAGREP TOXIGER	1 GAL.		24" o.c.	48
	DAPU	DALIA PURPUREA PURPLE PRAIRIE CLOVER	1 GAL.		18" o.c.	24
	GALI	GAURA LINDEHEIMERI 'WHIRLING BUTTERFLIES' WHIRLING BUTTERFLIES GAURA	1 GAL.		24" o.c.	49
	NERA	NERITA RACEMOSA 'WALKER'S LOW' WALKER'S LOW CATMINT	1 GAL.		36" o.c.	12
	TICD	TIBELLA COROPHOLIA FOAMFLOWER	1 GAL.		18" o.c.	32
GROUNDCOVER	CODE	BOTANICAL / COMMON NAME	CONT.	SIZE	SPACING	
	CARE	CAREX ROSEA ROSY SEDGE	PLUG			325
	CARE	CAREX TEXENSIS TEXAS SEDGE	PLUG			325

LITTLE
 615 South College Street, Suite 1000
 Durham, NC 27709
 T: 704.252.6728
 www.littleonline.com

GRUBB PROPERTIES

REGISTERED PROFESSIONAL ENGINEER
 CERT. NO. 50033
 STATE OF NORTH CAROLINA

DACP SUBMITTAL #3

02/18/2022

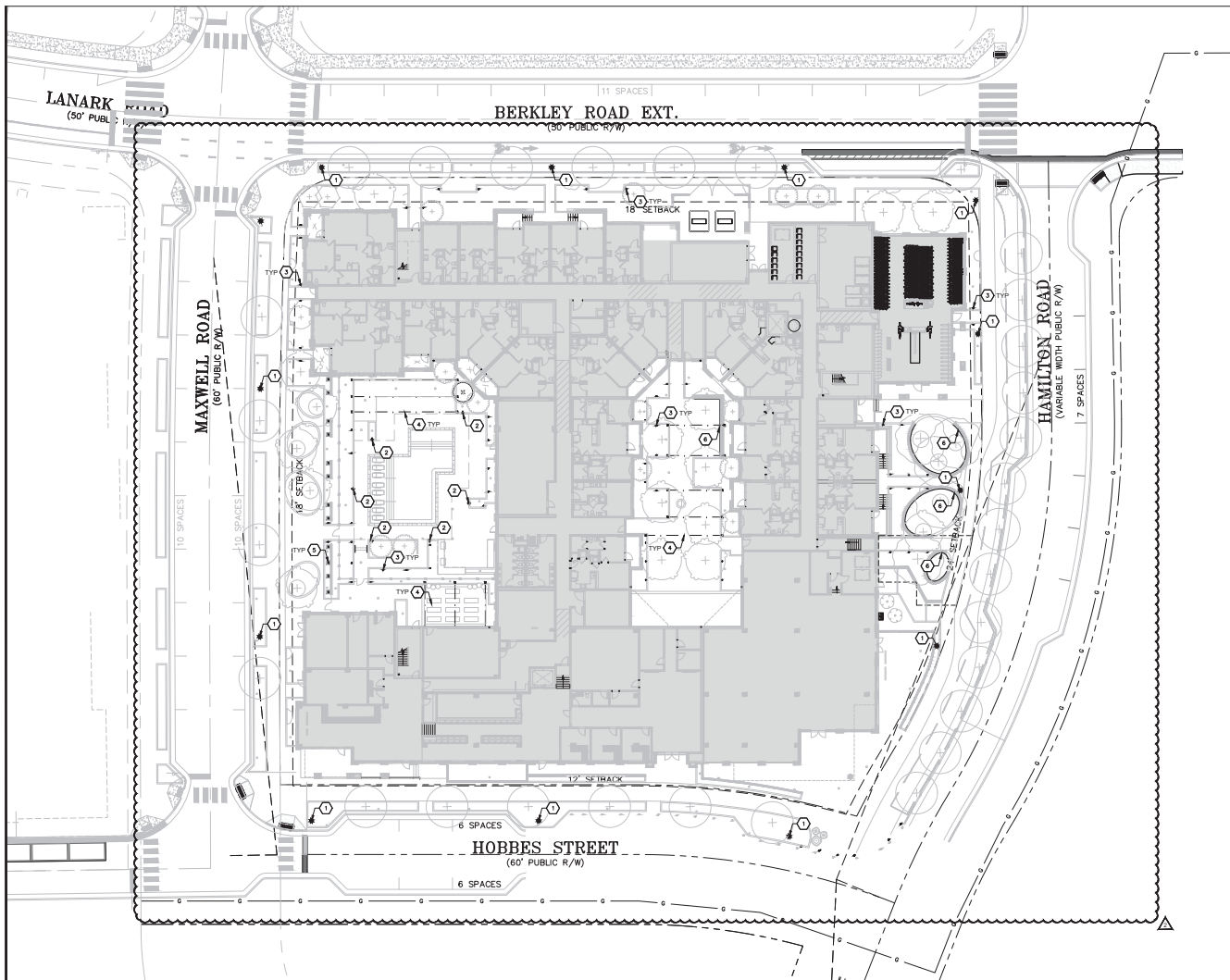
CAUTION!!!
 THE LOCATIONS AND ELEVATIONS OF EXISTING UNDERGROUND UTILITIES AS SHOWN ON THIS DRAWING ARE ONLY APPROXIMATE. NO GUARANTEE IS EITHER EXPRESS OR IMPLIED AS TO THE COMPLETENESS OF ACCURACY THEREOF. THE CONTRACTOR SHALL BE EXCLUSIVELY RESPONSIBLE FOR DETERMINING THE EXACT UTILITY LOCATIONS AND ELEVATIONS PRIOR TO THE START OF CONSTRUCTION.

GRAPHIC SCALE
 1" = 20'-0"

NORTH

101.16446.00
 STREETScape
 LANDSCAPE
 PLAN

L3.01



LIGHTING LEGEND

- 1' STREET PEDESTRIAN POLE LIGHT - ENTERPRISE LED. SEE DETAIL 14.5.01
- 12' COURTYARD PEDESTRIAN POLE LIGHT - SEE DETAIL 24.5.01
- LANDSCAPE BOLLARD - SEE DETAIL 44.5.01
- COURTYARD MARKET LIGHTS - SEE DETAIL 34.5.01
- TREE UPLIGHTS - SEE DETAIL 64.5.01
- LED STRIP LIGHTING - SEE DETAIL 94.5.01

LIGHTING SCHEDULE

TYPE	NAME	QUANTITY	HEIGHT	COLOR	MANUFACTURER	NOTES
PEDESTRIAN POLE LIGHT	ENTERPRISE LED	13	12'	BLACK	BY DUKE ENERGY	TO BE INSTALLED PER MANUFACTURER'S SPECIFICATIONS
COURTYARD PEDESTRIAN POLE LIGHT	SINGLE POLE TOP LUMINAIRE BEGA 89 402	6	12'	BLACK	BEGA	POLE LOCATIONS TO BE VERIFIED TO MEET REQUIRED 10' FOOT CANDLE MINIMUM FOR NC POOL CODE. TO BE INSTALLED PER MANUFACTURER'S SPECIFICATIONS
LANDSCAPE BOLLARD	GARDEN BOLLARD 77 263	39	27 1/2'	BLACK	BEGA	TO BE INSTALLED WITH DIRECT BURIAL ANCHORAGE.
MARKET LIGHTING	TIVOLI LITESPHERE	257 LF	MOUNTED 8" - 10" ABOVE FINISHED GRADE	BLACK	TIVOLI	TO BE MOUNTED USING CATERMAYN CABLE SYSTEM INDICATED TO SUPPORT POLE.
TREE UPLIGHTS	SQUARE DELTA STAR	12	60" X 60" X 18"	BLACK	BK LIGHTING	BENCHES TO BE INSTALLED PER MANUFACTURER'S SPECIFICATIONS.
LED STRIP LIGHTING	TOKILUM LUM-100-W	80 LF	MOUNTED UNDER CAST STONE GAP	WHITE	TOKSTAR	TO BE INSTALLED PER MANUFACTURER'S SPECIFICATIONS

LIGHTING NOTES

B. CONTRACTOR TO PROVIDE ALLOWANCES FOR ALL AMENITY LANDSCAPE LIGHTS. AMENITY LIGHTING TO INCLUDE PEDESTRIAN LIGHTS, ACCENT LIGHTS FOR ARCHITECTURAL AND ART ELEMENTS, BOLLARD LIGHTS, UNDER CAP LIGHTING AT PLANTER WALLS AND BENCH SEATING, AND GATEWAY STYLE FESTIVAL LIGHTING SUPPORTED WITH AIRCRAFT CABLE OR APPROVED EQUAL. LANDSCAPE LIGHTING TO INCLUDE UPLIGHTING AT SPECIMEN TREES. SEE LIGHTING PLAN FOR LANDSCAPE LIGHTING TYPE AND LOCATIONS. TO ALSO INCLUDE A MINIMUM OF (1) GFCI OUTLET AT THE LOCATION OF FESTIVAL LIGHTING. GFCI OUTLETS TO BE HOUSED IN RECEPTACLE BOLLARD BY BK LIGHTING OR APPROVED EQUAL. COLOR TO BE BLACK. FINAL LIGHTING LAYOUT TO BE DETERMINED.

POOL DECK LIGHTING TO HAVE A MINIMUM OF 10 FOOT CANDLES TO ALLOW FOR NIGHT SWIMMING. TOTAL NUMBER OF POLE LIGHTS TO BE DETERMINED BASED ON FUTURE PHOTOVOLTAIC STUDY



DACP SUBMITTAL #3

02/18/2022

NO.	REVISION	DATE
1	PER DACP REVIEW	
2	PER DACP REVIEW	
3	PER DACP REVIEW	
4	PER DACP REVIEW	
5	PER DACP REVIEW	
6	PER DACP REVIEW	
7	PER DACP REVIEW	
8	PER DACP REVIEW	
9	PER DACP REVIEW	
10	PER DACP REVIEW	
11	PER DACP REVIEW	
12	PER DACP REVIEW	
13	PER DACP REVIEW	
14	PER DACP REVIEW	
15	PER DACP REVIEW	
16	PER DACP REVIEW	
17	PER DACP REVIEW	
18	PER DACP REVIEW	
19	PER DACP REVIEW	
20	PER DACP REVIEW	

PROJECT ARCHITECT
 DAVID POWLEN
 ANNA WALKER
 ANNA WALKER

PROJECT ADDRESS
 LINK APARTMENTS CALYX II
 GLEN LENOX - BLOCK 4
 CHAPEL HILL, NC

PROJECT NUMBER
 101.16446.00

SITE LIGHTING PLAN

L6.00



CAUTION!!!
 THE LOCATIONS AND ELEVATIONS OF EXISTING UNDERGROUND UTILITIES AS SHOWN ON THIS DRAWING ARE ONLY APPROXIMATE. NO GUARANTEE IS EITHER EXPRESS OR IMPLIED AS TO THE COMPLETENESS OF ACCURACY THEREOF. THE CONTRACTOR SHALL BE EXCLUSIVELY RESPONSIBLE FOR DETERMINING THE EXACT UTILITY LOCATIONS AND ELEVATIONS PRIOR TO THE START OF CONSTRUCTION.

